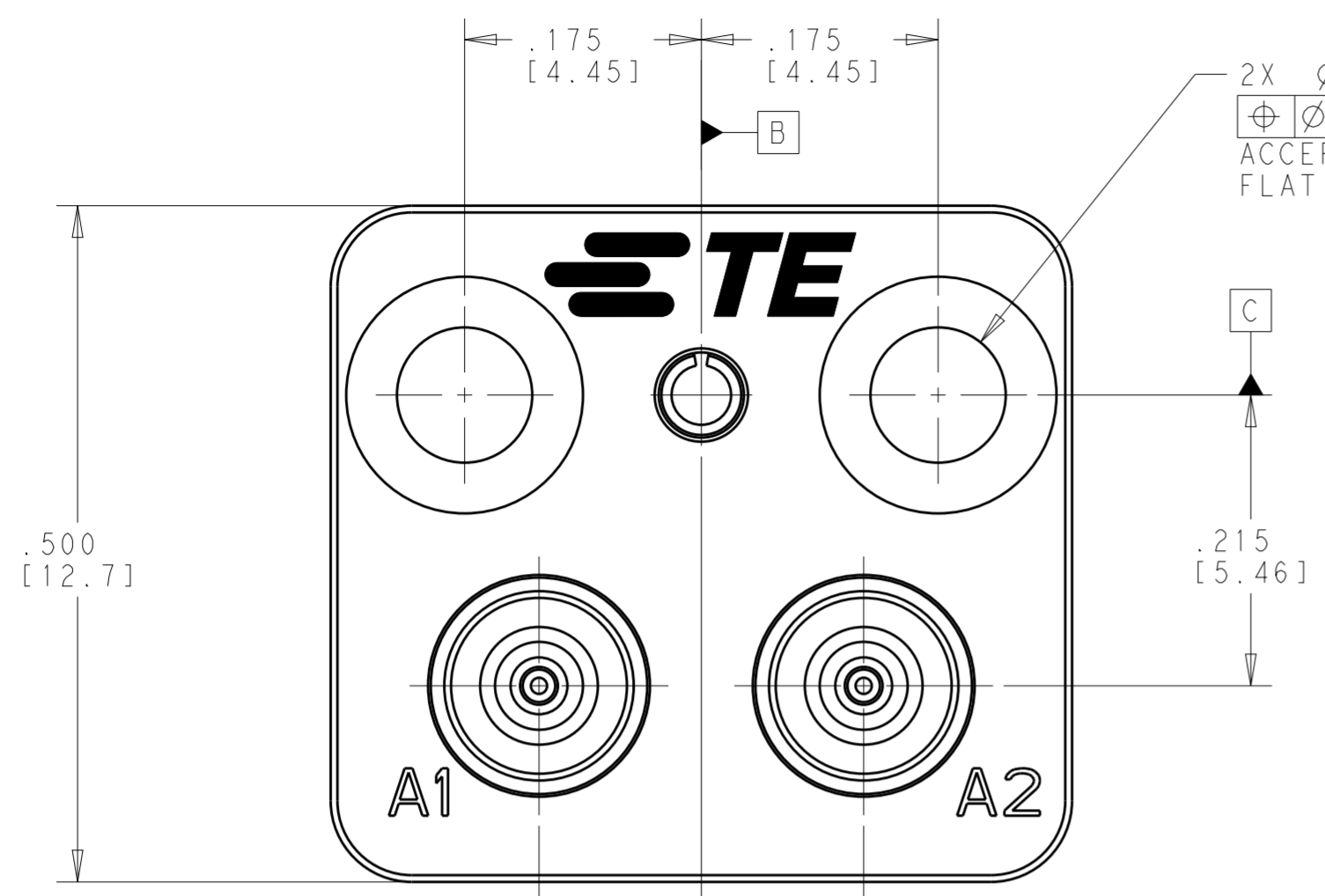


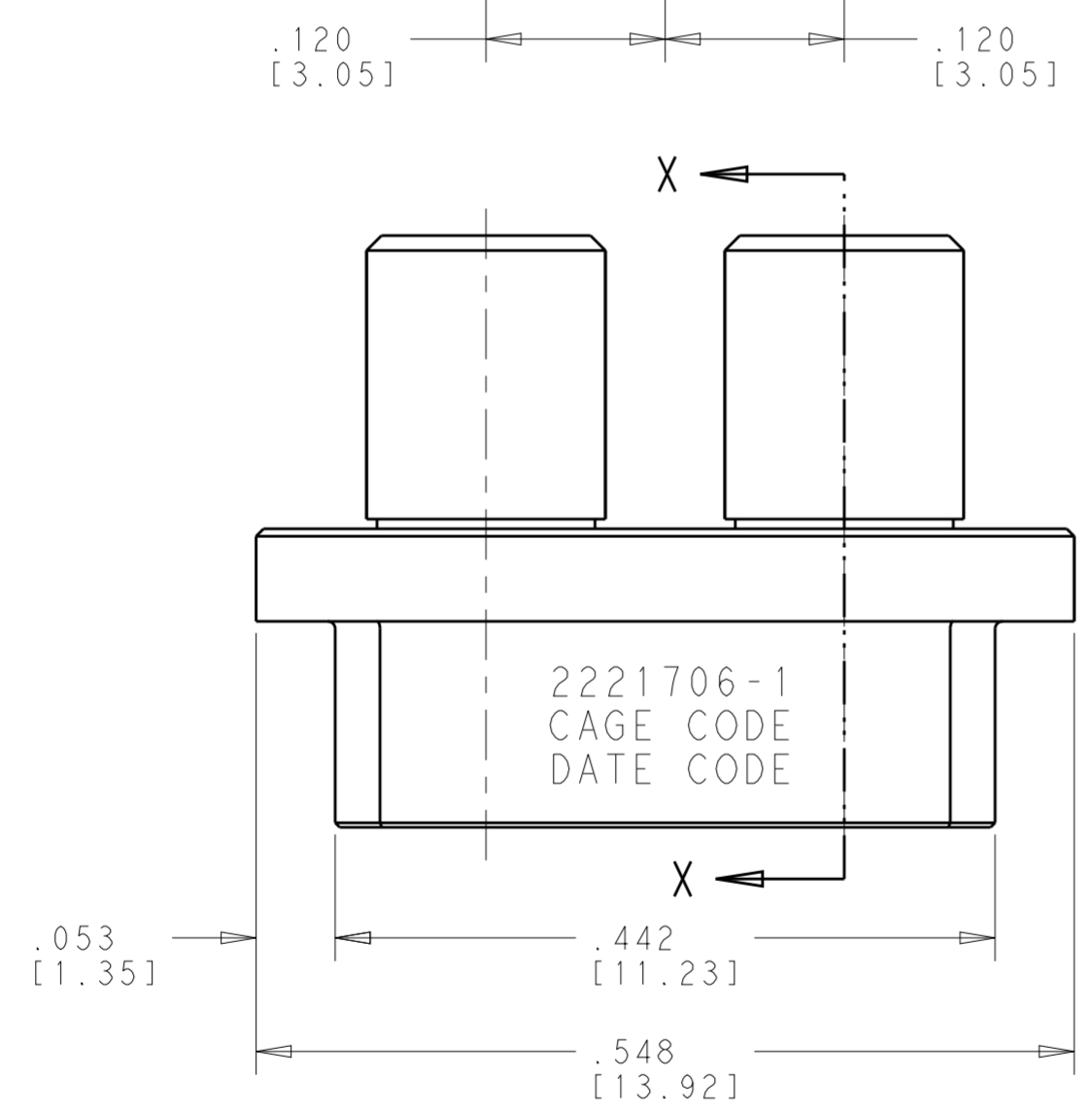
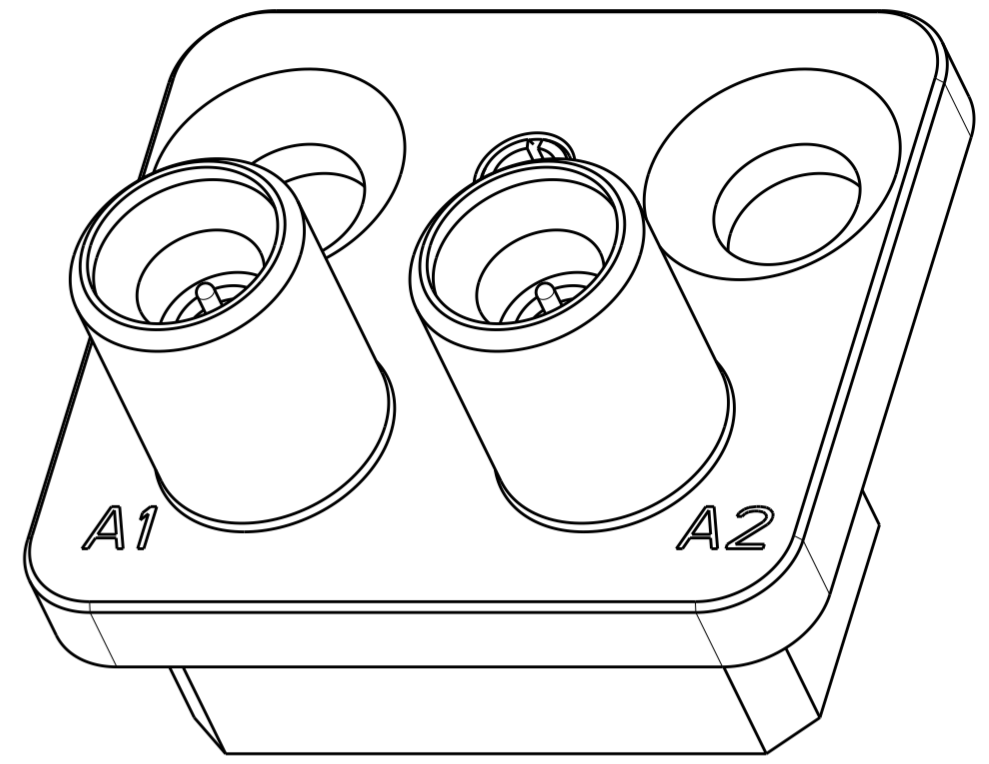
THIS DRAWING IS UNPUBLISHED. RELEASED FOR PUBLICATION 20  
 © COPYRIGHT 20 BY - ALL RIGHTS RESERVED.

REVISIONS					
P	LTR	DESCRIPTION	DATE	DWN	APVD
1		PRELIMINARY	27JAN2015	STM	STM

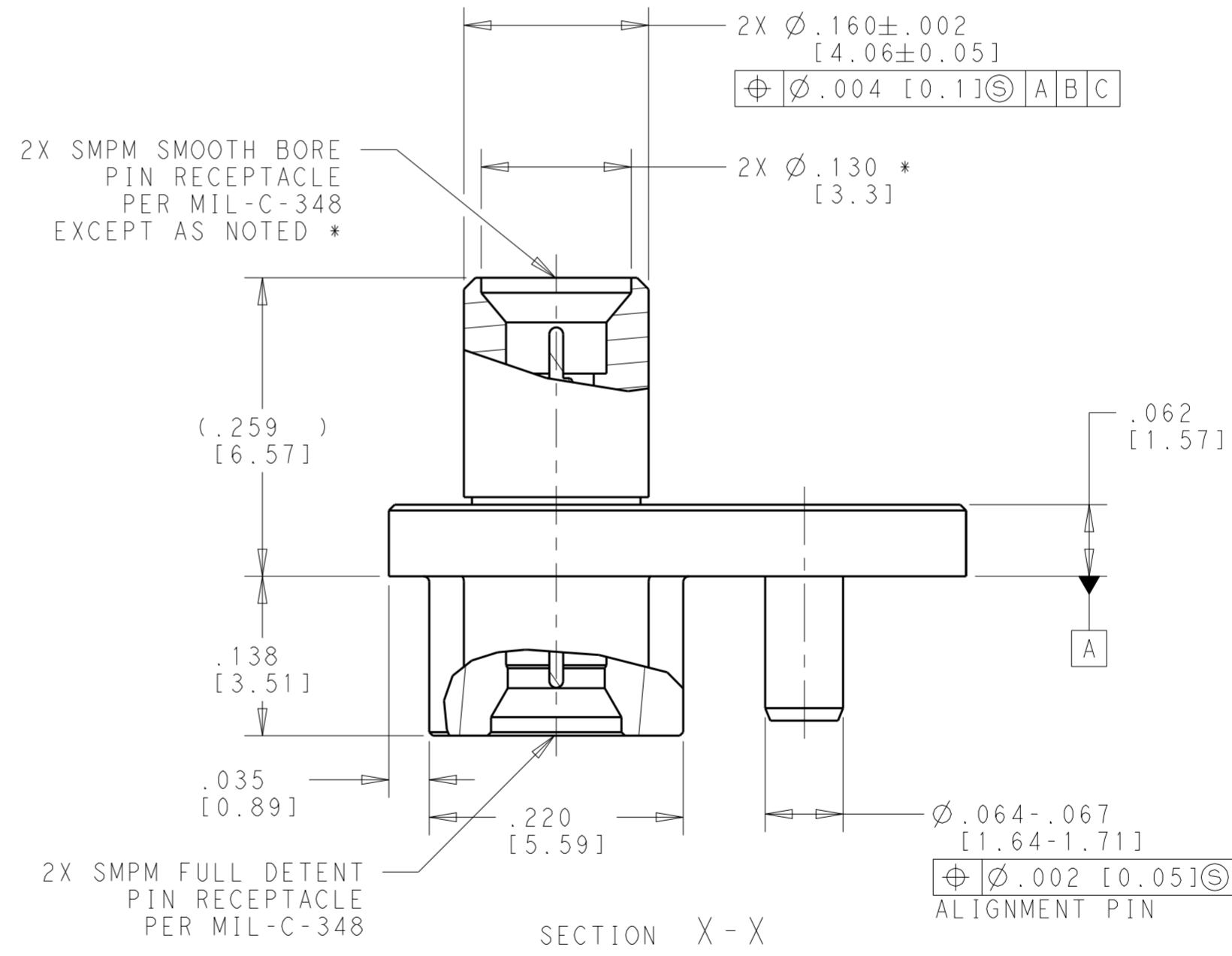


2X Ø.100 MOUNTING HOLES  
 ⊕ Ø.004 [0.1] ⊙ A B C  
 ACCEPT 2-56 UNC, 100° C SINK  
 FLAT HEAD SCREWS

THIS PRINT IS  
**PRELIMINARY**  
 UNQUALIFIED PRODUCT  
 CONTACT PRODUCT ENGINEERING  
 BEFORE USING THIS PRINT



2X SMPM SMOOTH BORE  
 PIN RECEPTACLE  
 PER MIL-C-348  
 EXCEPT AS NOTED \*



COMPONENT	MATERIAL	FINISH
RF MODULE BODY	STAINLESS STEEL, TYPE 303 PER UNS S 30300	PASSIVATED PER, AMS QQ-P-35
SPRING PIN (ALIGNMENT)	WORK HARDENED NICKEL STAINLESS STEEL	PASSIVATED PER, AMS QQ-P-35
SMPM SMOOTH BORE & CONTACTS	BERYLLIUM COPPER, ALLOY C17300, PER ASTM B196	GOLD PLATE OVER NICKEL
INSULATORS	POLYTETRAFLUOROETHYLENE (PTFE)	N/A

2221706-1  
 PART  
 NUMBER

THIS DRAWING IS A CONTROLLED DOCUMENT.

DWN	S. T. Morley	27JAN2015
CHK	S. T. Morley	27JAN2015
APVD	S. T. Morley	27JAN2015

TE Connectivity

NAME: 2 POSITION RF BACKPLANE MODULE  
 SMPM SB - FD RECEPTACLES

SIZE	A2	CAGE CODE	-	DRAWING NO	C-2221706_C	RESTRICTED TO	-
WEIGHT	4.24 g	SCALE	8:1	SHEET	1 OF 1	REV	1

Customer Drawing