

THIS DRAWING AND THE INFORMATION SET FORTH HERE-ON ARE THE PROPERTY OF TYCO ELECTRONICS CORPORATION, AND ARE TO BE HELD IN TRUST AND CONFIDENCE. PUBLICATION, DUPLICATION, DISCLOSURE, OR USE FOR ANY PURPOSE NOT EXPRESSLY AUTHORIZED IN WRITING BY TYCO ELECTRONICS CORPORATION IS PROHIBITED.

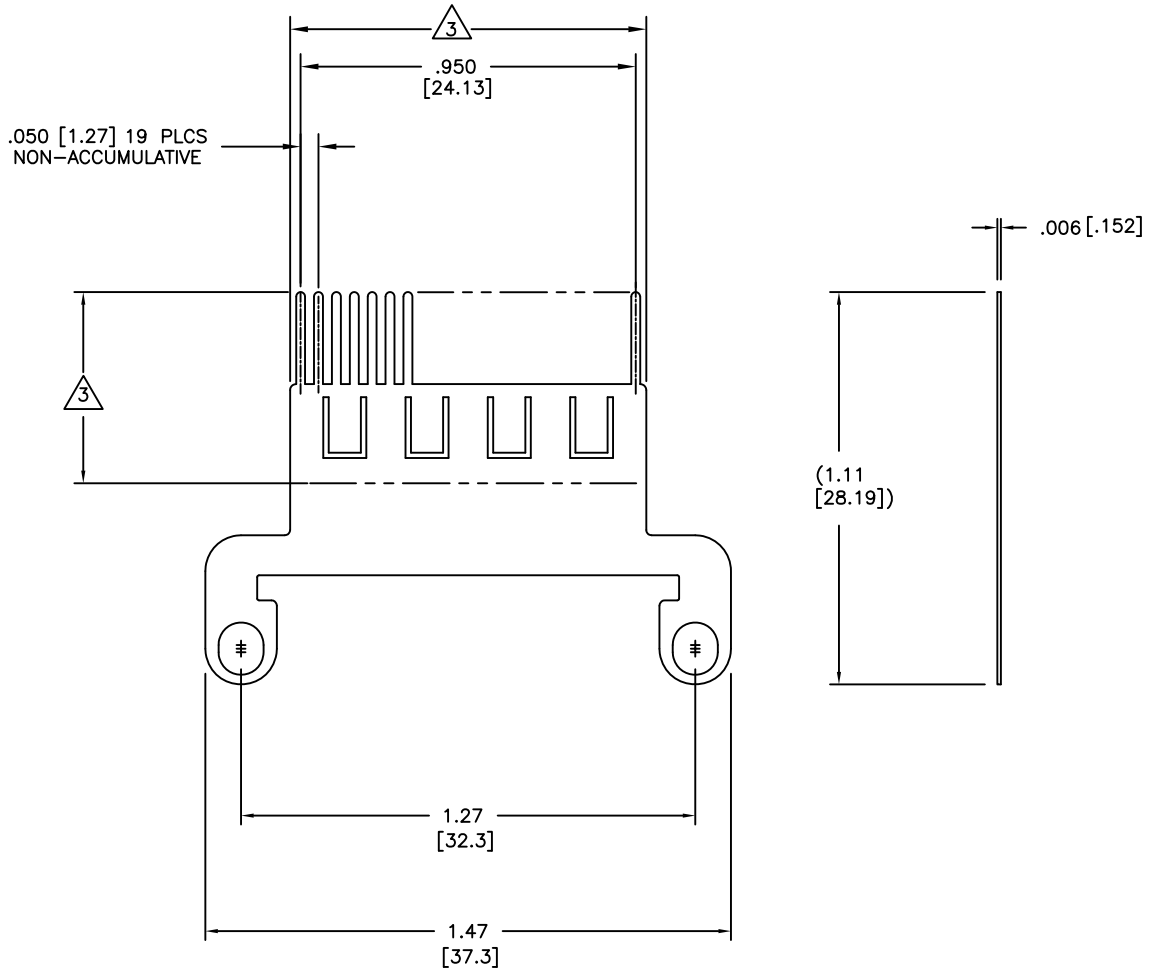
REVISIONS

LTR	DESCRIPTION	DATE	APPROVED
2	REVISED PER ECN T-11659	89 APR 3	J.B.
B	(A REV SKIPPED TO MATCH PD) PER ECO-10-018390	SEP/7/2010	M.HIGGY
B1	ADMINISTRATIVE CHANGE REMOVE SQ. TABS FROM PICTURE, PER ECO-10-019722	SEP/27/2010	M.HIGGY

NOTES:

1. MATERIAL: COPPER ALLOY 172 PER ASTM B194
2. FINISH: SOLDER PLATE PER SAE-AMS-P-81728 USING Sn63.

△ POST FLUXED PER ANSI-JSTD-004, TYPE RMA



If this document is printed it becomes uncontrolled. Check for the latest revision

CUSTOMER DRAWING

©2010 Tyco Electronics. All rights reserved.

UNLESS OTHERWISE SPECIFIED DIMENSIONS ARE IN INCHES. METRIC DIMENSIONS ARE IN BRACKETS.

DECIMALS
 .XXX ± .005 [.13 mm]
 .XX ± .03 [.8 mm]

ANGLES
 .X ± ---

REDRAWN ZSOFIA ORBAN	DATE AUG/30/2010
CHECKED ---	DATE ---
APPROVED ---	DATE ---
APPROVED M. HIGGY	DATE AUG/30/2010
CAD NAME CTA-0125	



Tyco Electronics

Raychem Interconnect
 300 Constitution Drive
 Menlo Park, CA 94025 U.S.A

TITLE
 1 INCH BUSBAR, ALL-FINGERS,
 EME MOUNTING EARS
 MTC50 SERIES

THIRD ANGLE PROJECTION

SIZE A	CAGE CODE: 06090	DWG. NO. CTA-0125	REV B1
-----------	---------------------	----------------------	-----------

DO NOT SCALE THIS DWG

SHEET 1 OF 1