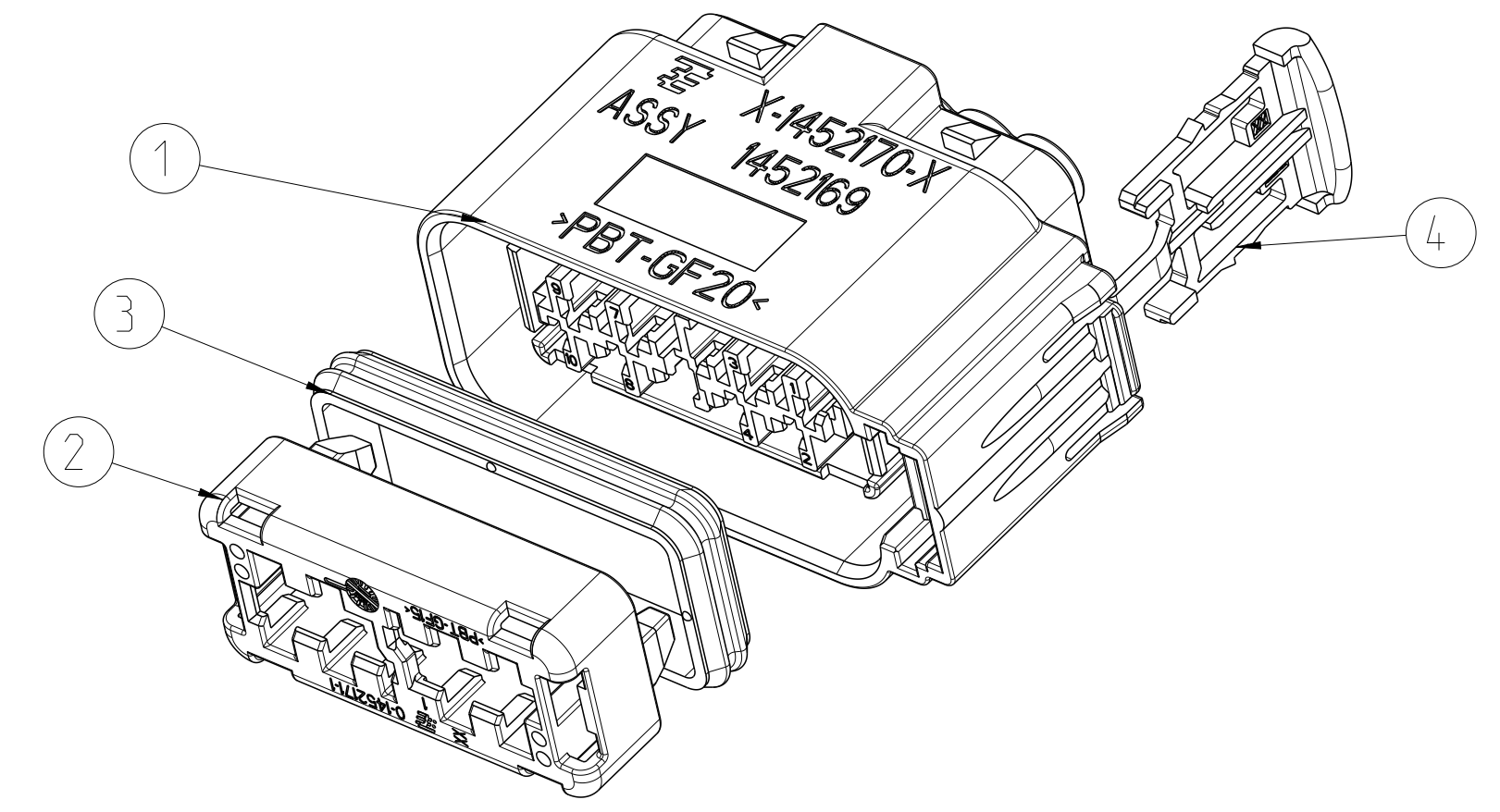
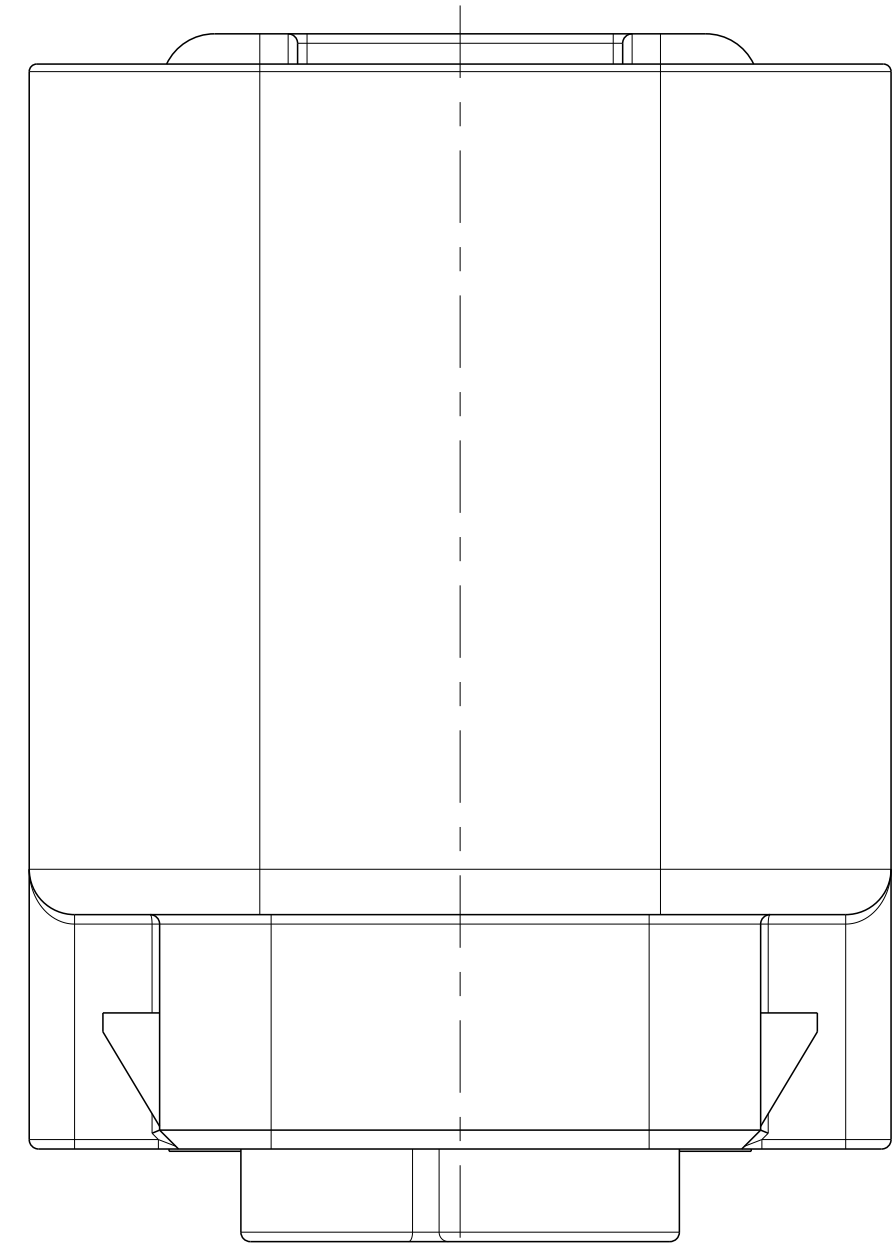
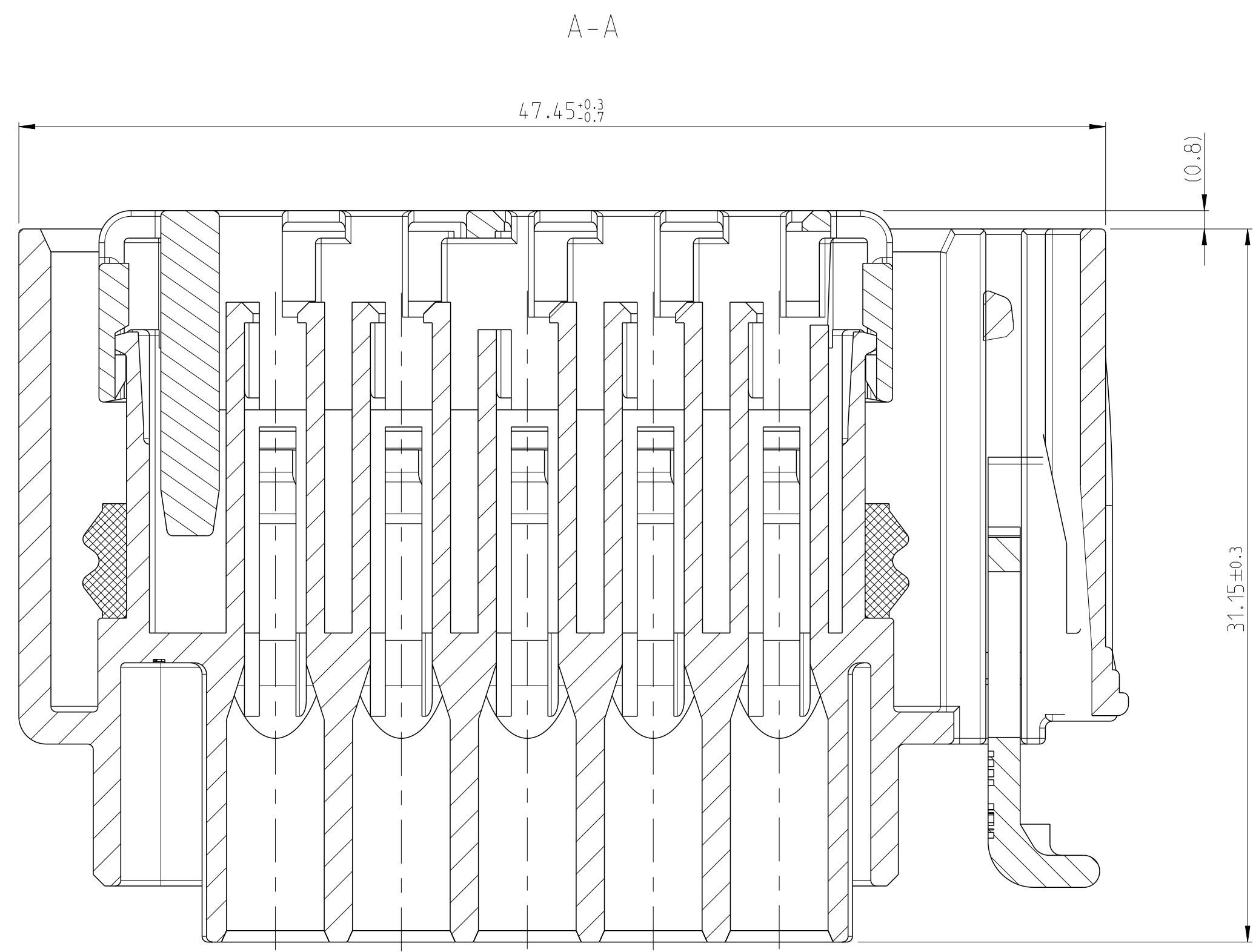


LOC	DIST	REVISIONS			
P	LTN	DESCRIPTION	DATE	DMN	APVD
C	ECR-10-008396		19APR2010	GP	GM
C1	ECR-11-015258		29JULY2011	PT	GM
D	ECR-12-020122		21NOV2012	SH	GM

1.5MM FEMALE TERMINAL SEALED
 1.5 mm Buchsenkontakte gedichtet
 SUITABLE TERMINALS: FORD CAT. 2 (SUPPLIER YAZAKI)
 Geeignete Kontakte: FORD Kat. 2 (Zulieferer YAZAKI)



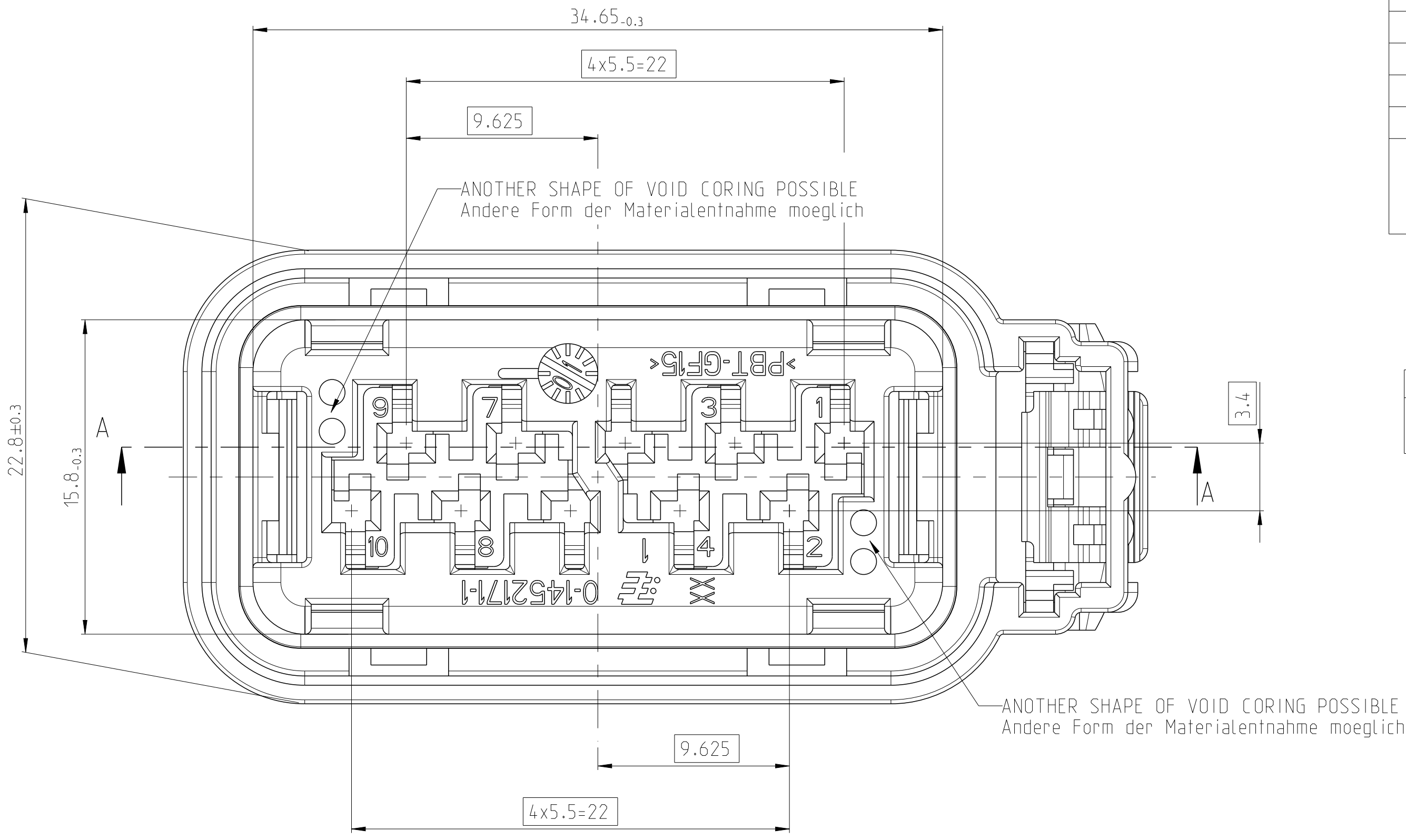
2:1

NOTES:
 Bemerkungen:

- THE MARKING OF THE FORD NO ON THE FEMALE HSG. IS FOR ALL ASSEMBLIES (WITH OR WITHOUT CPA / OPEN OR CLOSED CAVITIES):
3M5T-14A464-DKA
 Die Beschriftung der Ford PN auf dem Buchsengehäuse lautet fuer alle Baugruppen (mit oder ohne Gehäusesicherung /offene und geschlossene Kammern):
3M5T-14A464-DKA
- DELIVERY CONDITION: SPACER AND CPA IN PRELOCK POSITION
 Anlieferungszustand: Spacer und CPA in Vorraststellung
- ASSEMBLY PART NUMBER SHOWN WITHOUT DASH NUMBERS. SAME AS SINGLE PARTS DASH NUMBERS. PLEASE USE SINGLE PART DASH NUMBERS.
 Assy Teile Nr. wird ohne Vor- und Nach Strichzahl gezeigt. Bedeutung gleich wie beim Einzelteil. Bitte die Vor- und Nach Strichzahl vom Einzelteil benutzen.
- PERIPHERAL SEAL MATERIAL: LR3846/30

TE - NO. TE - Nr.	1	2	3	4	5	6	7	8	9	10
3-1452169-1		X	X				X			
2-1452169-2		X	X						X	X
2-1452169-1		X	X						X	X
1-1452169-1		X	X			X				
0-1452169-1										

BLANKED CAVITIES INDICATE OPEN LOCATIONS
 Leere Felder kennzeichnen offene Kammern
 WITH "X" MARKED CAVITIES INDICATE ALWAYS CLOSED LOCATIONS
 Markierte Felder mit "X" kennzeichnen geschlossene Kammern



DESCRIPTION	TE PN.	TE PN.	TE PN.	TE PN.	TE PN.	TE PN.	FORD PN.
SUITABLE FOR passend zu	COVER	0-1452173-1	0-1452173-1	0-1452173-1	0-1452173-1	0-1452173-1	0-1452173-1
	HEADER	X-1452179-X	X-1452179-X	X-1452179-X	X-1452179-X	X-1452179-X	X-1452179-X

QTY	TE PN.	TE PN.	TE PN.	TE PN.	TE PN.	TE PN.	FORD PN.	DESCRIPTION	WEIGHT [g]	COLOUR	ITEM NO.
1	-	-	-	-	1	-	PBT-GF15	CPA	0.42	RED	4
1	1	1	1	1	1	1	SILICON	PERIPHERAL SEAL	0.75	ORANGE	3
1	1	1	1	1	1	1	PBT-GF15	10 WAY DOOR LATCH CONNECTOR	2.31	RED	2
							PBT-GF20	SPACER			
1		1					PBT-GF20	10 WAY DOOR LATCH CONNECTOR FEMALE HSG. (2.3,7 CLOSED)	16.82	BLACK	1
							PBT-GF20	10 WAY DOOR LATCH CONNECTOR FEMALE HSG. (2.3,9,10 CLOSED)	16.82	BLACK	1
					1		PBT-GF20	10 WAY DOOR LATCH CONNECTOR FEMALE HSG.(2.3,6 CLOSED)	16.82	BLACK	1
						1	PBT-GF20	10 WAY DOOR LATCH CONNECTOR FEMALE HSG.	16.82	BLACK	1

0-2 AS SHOWN

THIS DRAWING IS A CONTROLLED DOCUMENT.

DIMENSIONS:	TOLERANCES UNLESS OTHERWISE SPECIFIED:	DMN: S. Dentler 02JUL2001	CHK: G. PUCKEL 02JUL2001	APVD: G. MUMPER 02JUL2001
mm	0 PLC ±	NAME: 10 WAY DOOR LATCH CONNECTOR ASSY		
	1 PLC ±	SIZE: 116-18483		
	2 PLC ±	CAGE CODE: 00779		
	3 PLC ±	DRAWING NO: 1452169		
	4 PLC ±	SHEET: 1 OF 1		
	ANGLES ±	REV: D		
MATERIAL:	FINISH:	Customer Drawing		

SCALE: 5:1