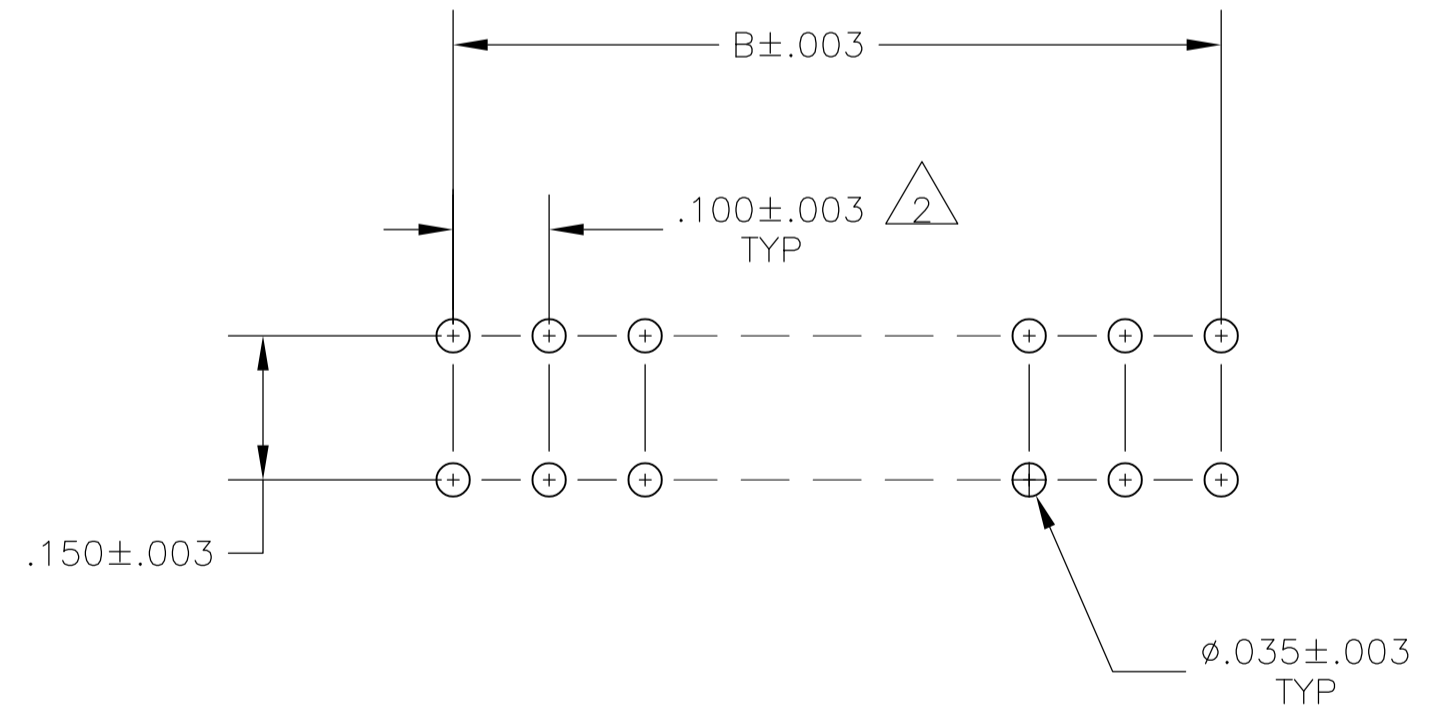
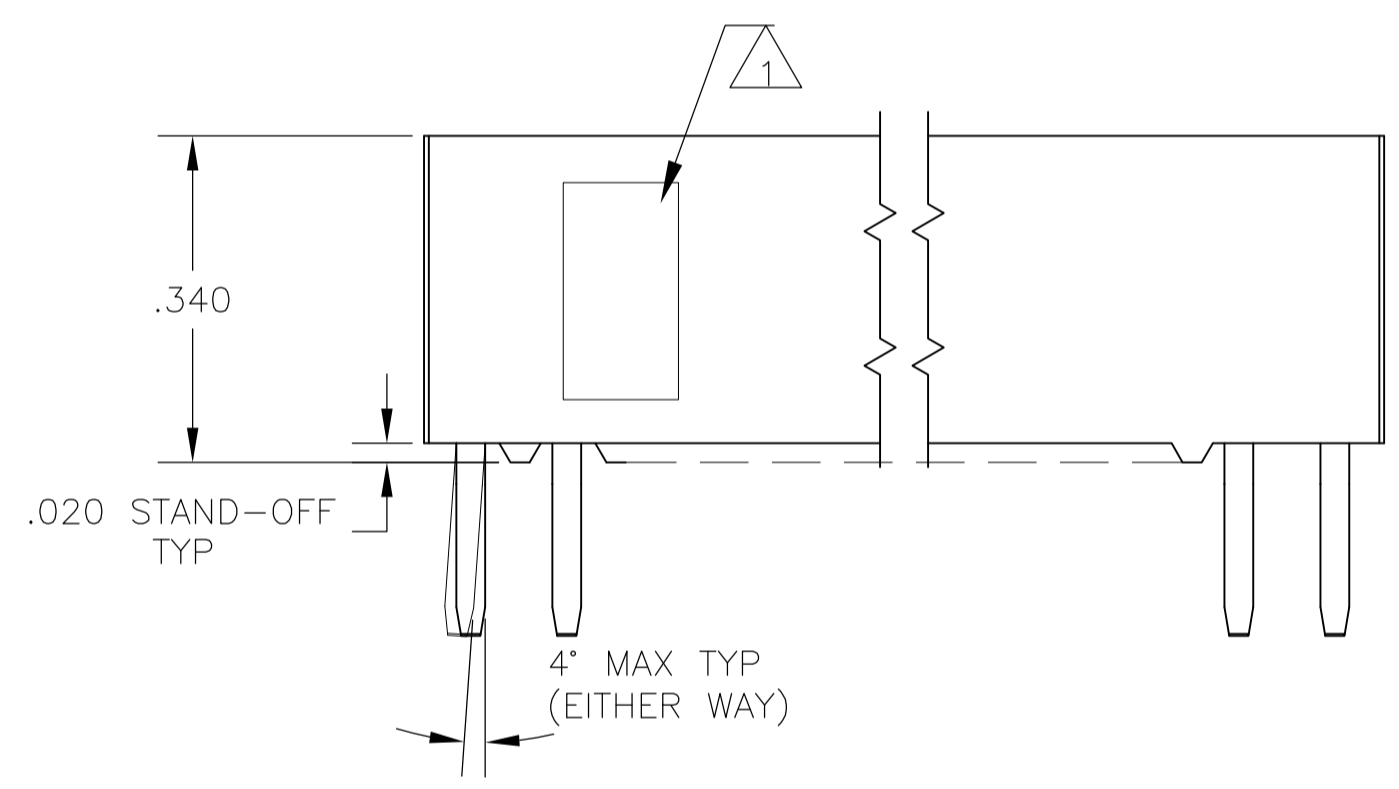
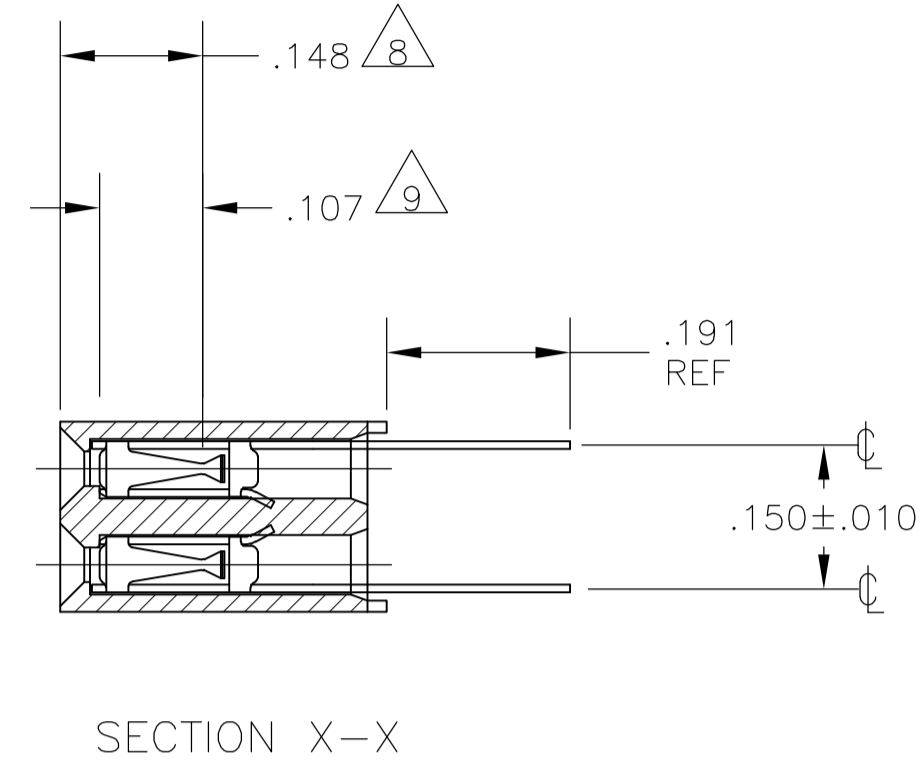
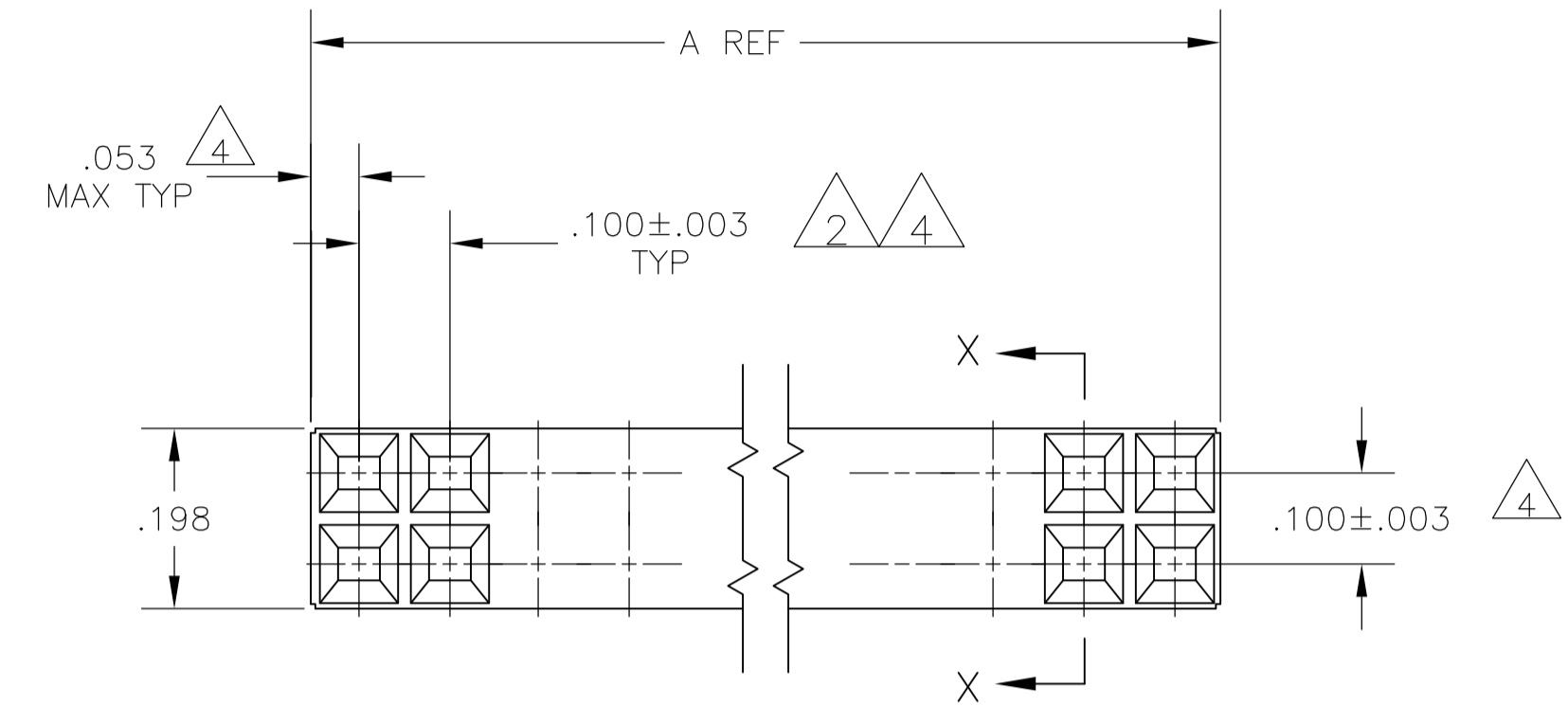


LOC		DIST		REVISIONS			
AD	00	REV	DATE	BY	CHK	APPV	
A		REVISED PER 063C-0061-03	07OCT03	MJM	JRO		
A1		REVISED PER ECO-09-024927	06NOV09	KK	AEG		



- △1 TYCO LOGO AND CSA LOGO ARE MOLDED INTO HOUSING
- △2 TOLERANCE NON-CUMULATIVE.
- △3 DUPLEX PLATED: .000030 GOLD IN CONTACT AREA, .000150-.000300 BRIGHT TIN-LEAD ON SOLDER LEADS, ALL OVER .000050 MIN NICKEL.
- △4 THESE DIMENSIONS PERTAIN TO CAVITY CENTERLINES ONLY. NOT TO CONTACT LOCATIONS.
- 6. PACKAGED IN SINGLE TUBES.
- △7 HOUSING: FLAME RETARDANT GLASS FILLED POLYESTER COLOR-BLACK, CONTACT: PHOS. BRONZE
- △8 POINT OF CONTACT DIMENSION.
- △9 POINT OF MEASUREMENT DIMENSION FOR PLATING THICKNESS (INSIDE CONTACT BEAMS).
- △10 DATE CODE AND PART NUMBER ARE MARKED IN APPROXIMATE LOCATION SHOWN"
- △11 DUPLEX PLATED: .000030 GOLD IN CONTACT AREA, .000150-.000300 MATTE TIN ON SOLDER LEADS, ALL OVER .000050 MINIMUM NICKEL"
- △12 ROHS 2002/95/EC COMPLIANT
- △13 OBSOLETE PARTS: OBSOLETE CIS STREAMLINING PER D.RENAUD/D.SINISI

FINISH	△13, △12	△11	3.200	3.100	64	-5-147065-1
		△3	3.200	3.100	64	147065-1
			A	B	NUMBER OF POSITIONS	PART NUMBER

THIS DRAWING IS A CONTROLLED DOCUMENT.

DIMENSIONS: INCHES	TOLERANCES UNLESS OTHERWISE SPECIFIED:	DIN J.HERRINGTON 09FEB98	Tyco Electronics Corporation Harrisburg, Pa 17105-3608
0 PLC ± -	1 PLC ± -	CHK J.HERRINGTON 09FEB98	
2 PLC ± -	3 PLC ± -	APVD J.HERRINGTON 09FEB98	NAME ASSEMBLY, MOD II DOUBLE ROW, .100 X .100
4 PLC ± -	ANGLES ± -	PRODUCT SPEC	APPLICATION SPEC
MATERIAL	FINISH	SIZE	WEIGHT
△7	△3, △11	A1 00779	147065
CUSTOMER DRAWING		SCALE 5:1	SHEET 1 OF 1 REV A1