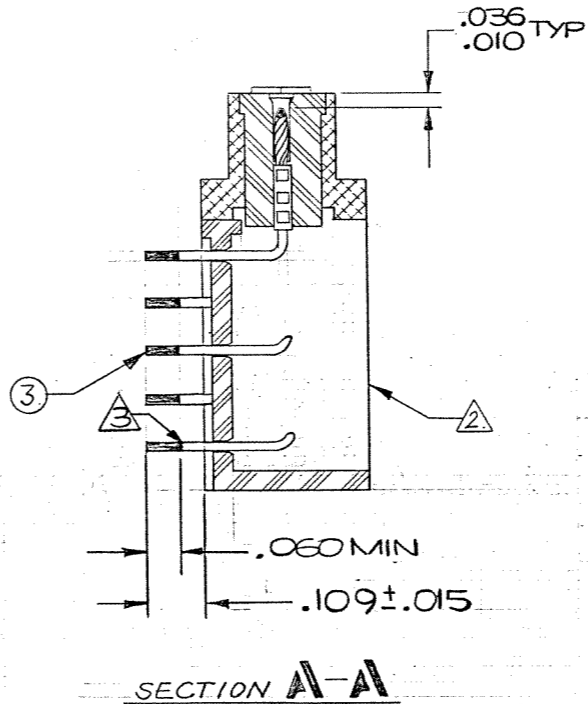
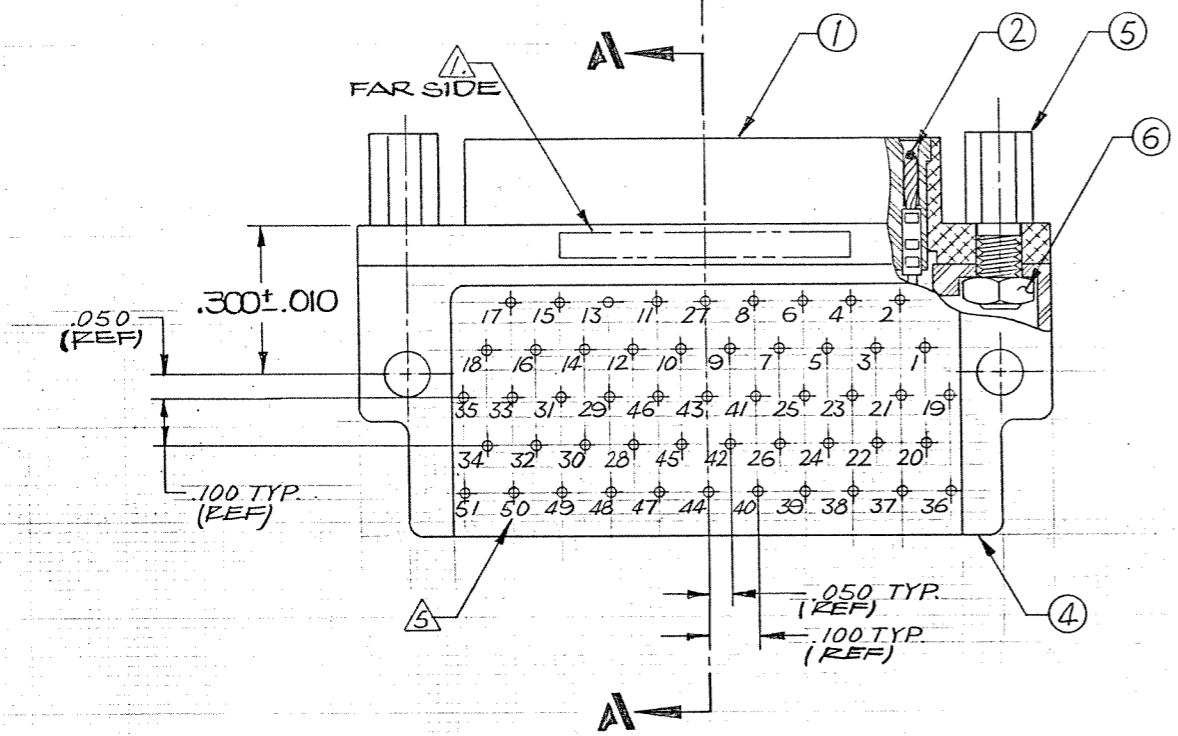
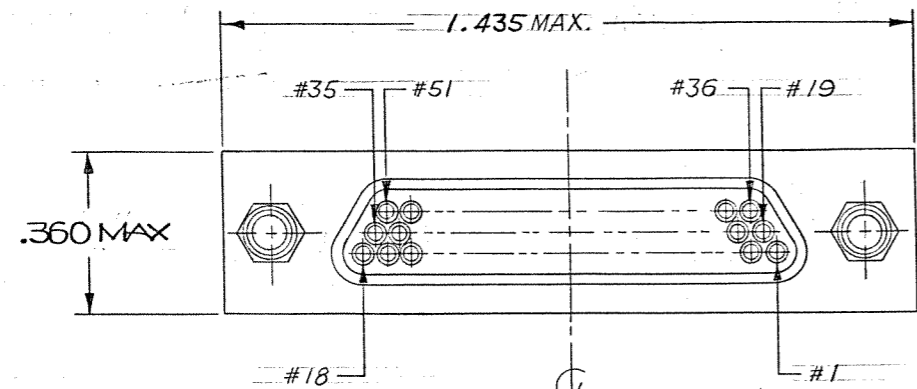


REVISIONS					
ZONE	LTR	ECN	DESCRIPTION	DATE	APPROVED
A		28677	RELEASE FOR PRODUCTION KC	4-16-82	[Signature]
B		34350	GENERAL UPDATE SEE ECN	10/16/92	[Signature]
C		34422	GENERAL UPDATE SEE ECN	11/20/92	[Signature]
D		37265	MARKING UPDATE, SEE ECN	8/25/97	[Signature]

CAUTION
 UNINSULATED WIRES USED IN THIS ASSEMBLY.
 MUST PASS 600 VOLT "HI-POT" AFTER POTTING



NOTES: UNLESS OTHERWISE SPECIFIED.

- 1. MARKING: MARK OPPOSITE SIDE PER MEP 203-12. THE HIGH CHARACTERS A APPROX. LOCATION SHOWN.
- 2. ASSEMBLE ALL ITEMS (ITEM #1 THRU #6), THEN FILL WITH EPOXY AROUND HEX NUT & T.B. BACKPOTTING AS SHOWN. USE HYSOL #4215 & #3561.
- 3. TERMINAL WIRES TO BE SOLDER COATED. SOLDER TO BE QQ-S-571, TYPE Sn 60% Sn 63% FLUX PER MIL-F-14256, TYPE A.
- 4. CRIMP LEADS INTO CONTACTS PER MEP 302-05.
- 5. TERMINAL IDENT NOS AS SHOWN (VIEWED FROM THE MOUNTING SURFACE) DO NOT ACTUALLY APPEAR ON THE PART (FOR IDENTIFICATION ONLY).
- 6. DELETED

Tyco Dwg 1532142-6
 Micro P/N 094-4704-7000

QTY REQD	CODE IDENT	PART OR IDENTIFYING NO.	NOMENCLATURE OR DESCRIPTION	CONTRACT NO.	DATE	APPROVALS
UNLESS OTHERWISE SPECIFIED DIMENSIONS ARE IN INCHES TOLERANCES ARE: FRACTIONS DECIMALS ANGLES ± .XX ± .XXX ± .005						
MATERIAL			MALCO A MICRODOT COMPANY, INC. 306 PASADENA AVE., SO. PASADENA, CALIF. 91030 METAL SHELL 90° LO-PROFILE CONNECTOR (MIL-C-83513) MCK-**-P-51 LRTI (WITH JACKPOST)			
FINISH			DRAWN <i>Yong CHU</i> 3/6/84 CHECKED <i>Yong CHU</i> 4/1/84 PR. EXP. <i>[Signature]</i> 8-12-82 APPD.			
NEXT ASSY USED ON			SIZE CODE IDENT NO. DRAWING NO. D 98278 094-4704-7000			
APPLICATION			DO NOT SCALE DRAWING			

PROD. CODE
 845
 CODE
 M

SCALE ~ SHEET / OF /