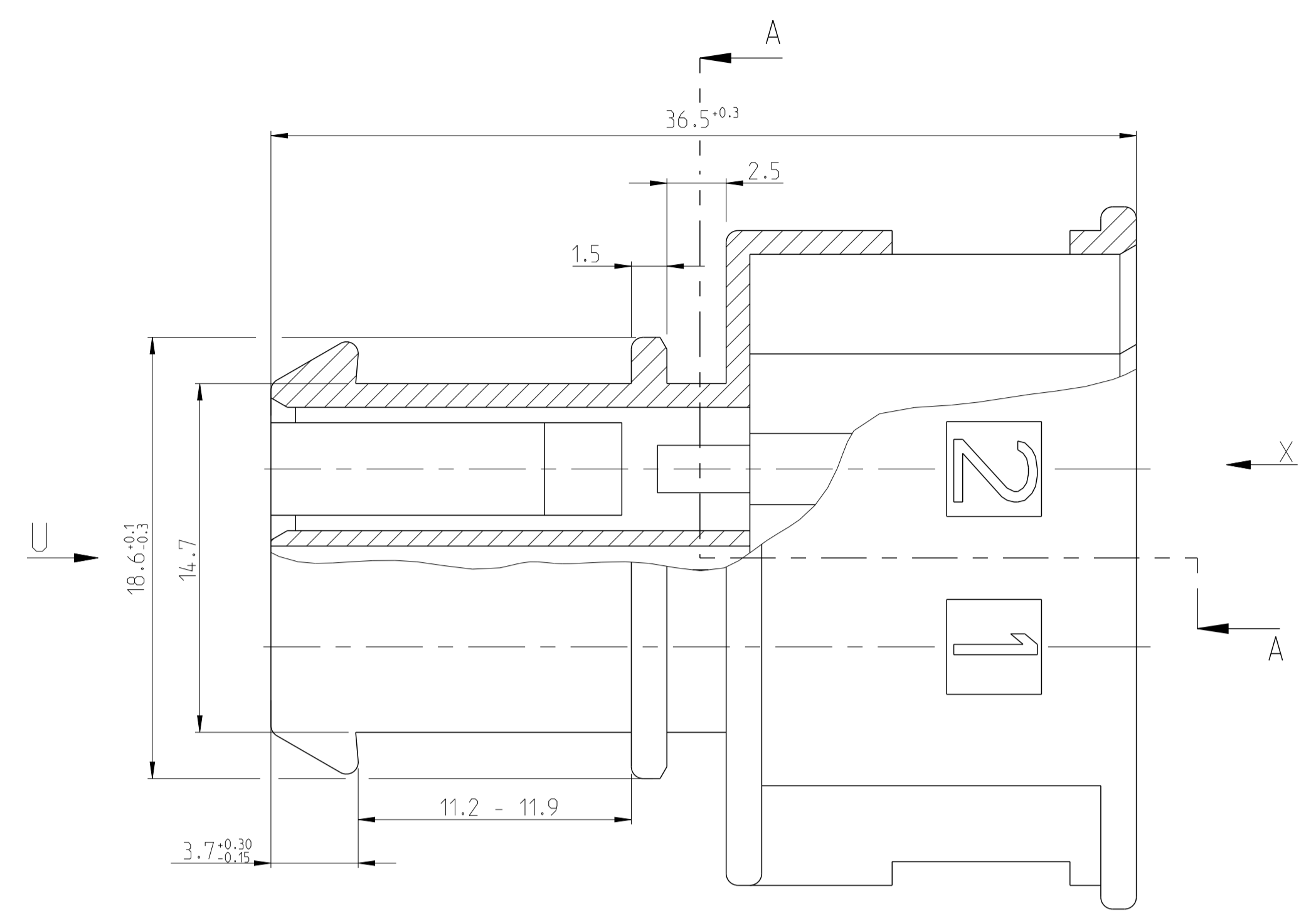
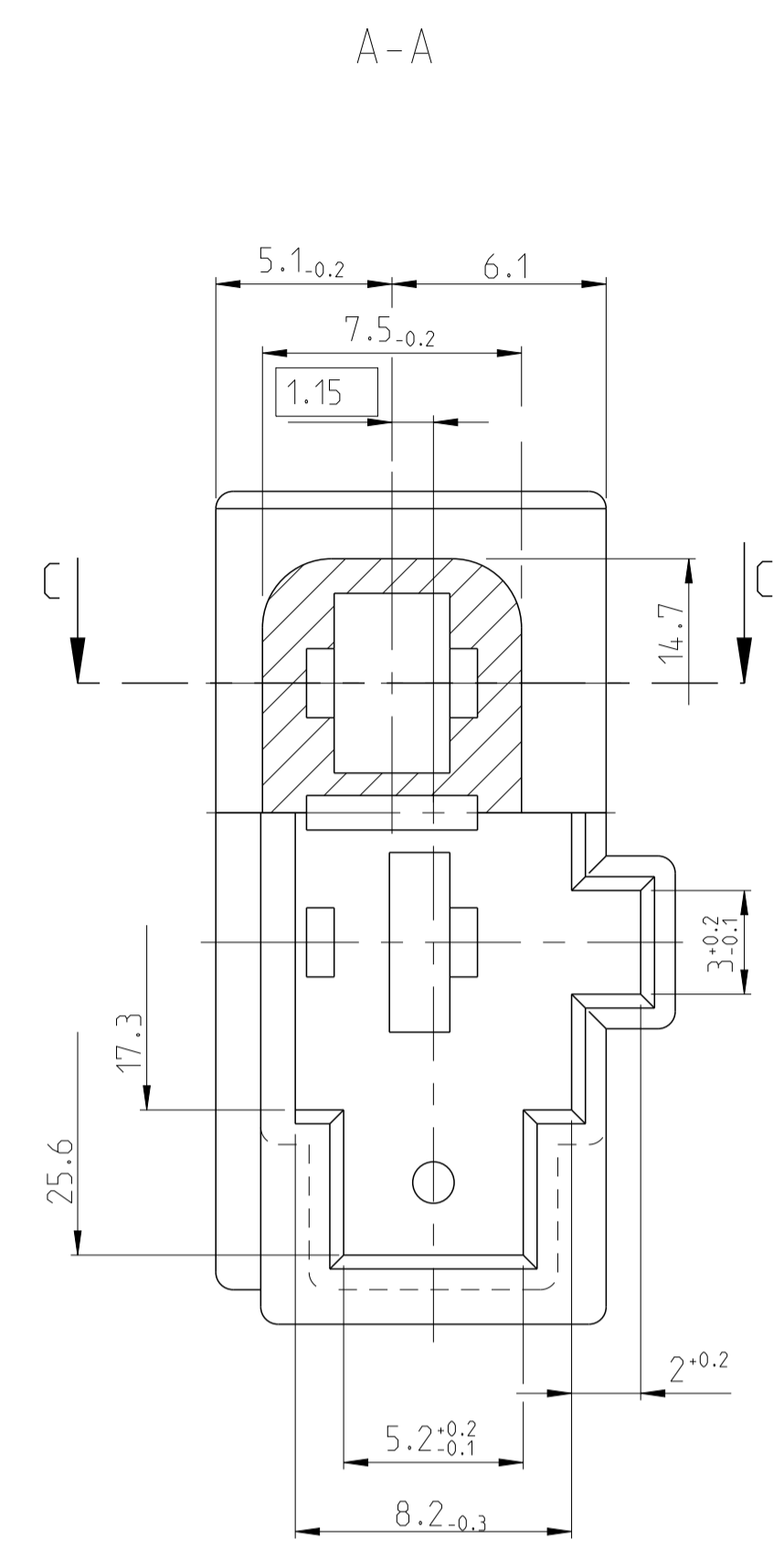
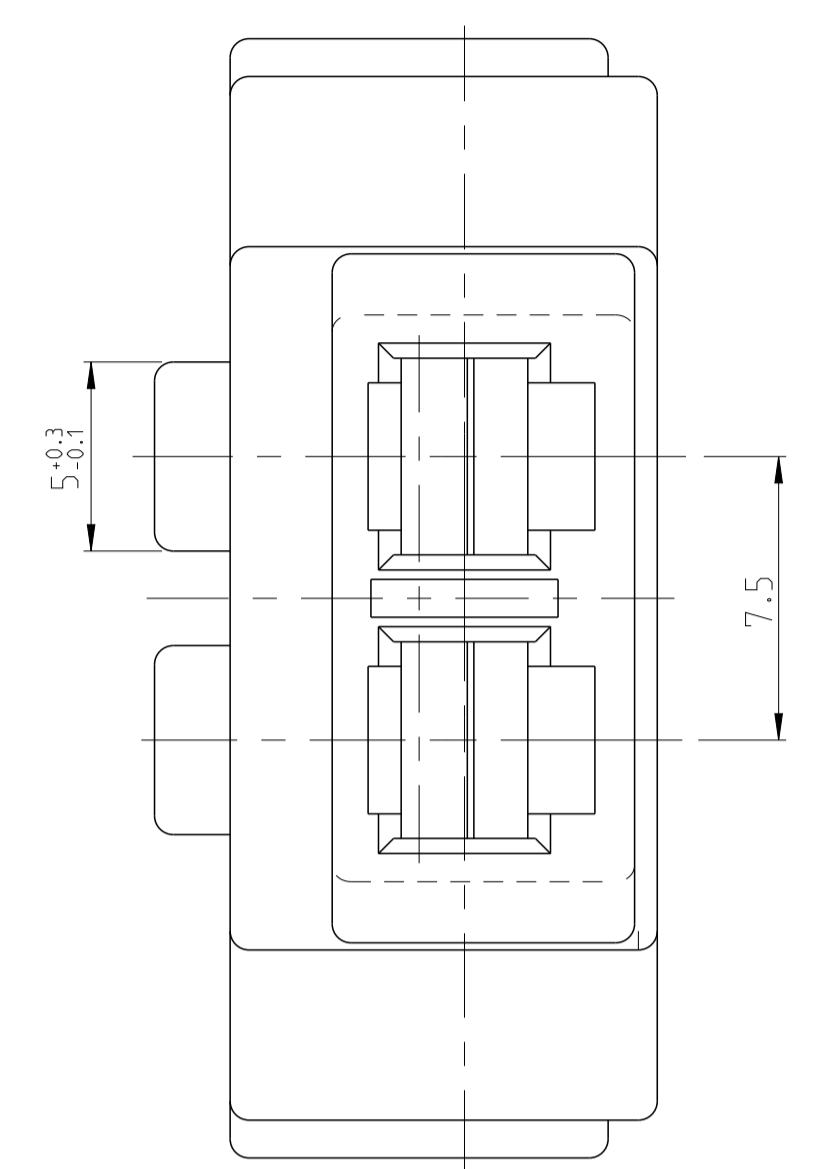


LOC	DIST	REV	DATE	BY	CHK	APPV
A1	-	A1	16AUG2007	Jecher	-	-
		A2	17OCT2007	Schae	-	-
		A3	30APR2013	MR	RBT	-

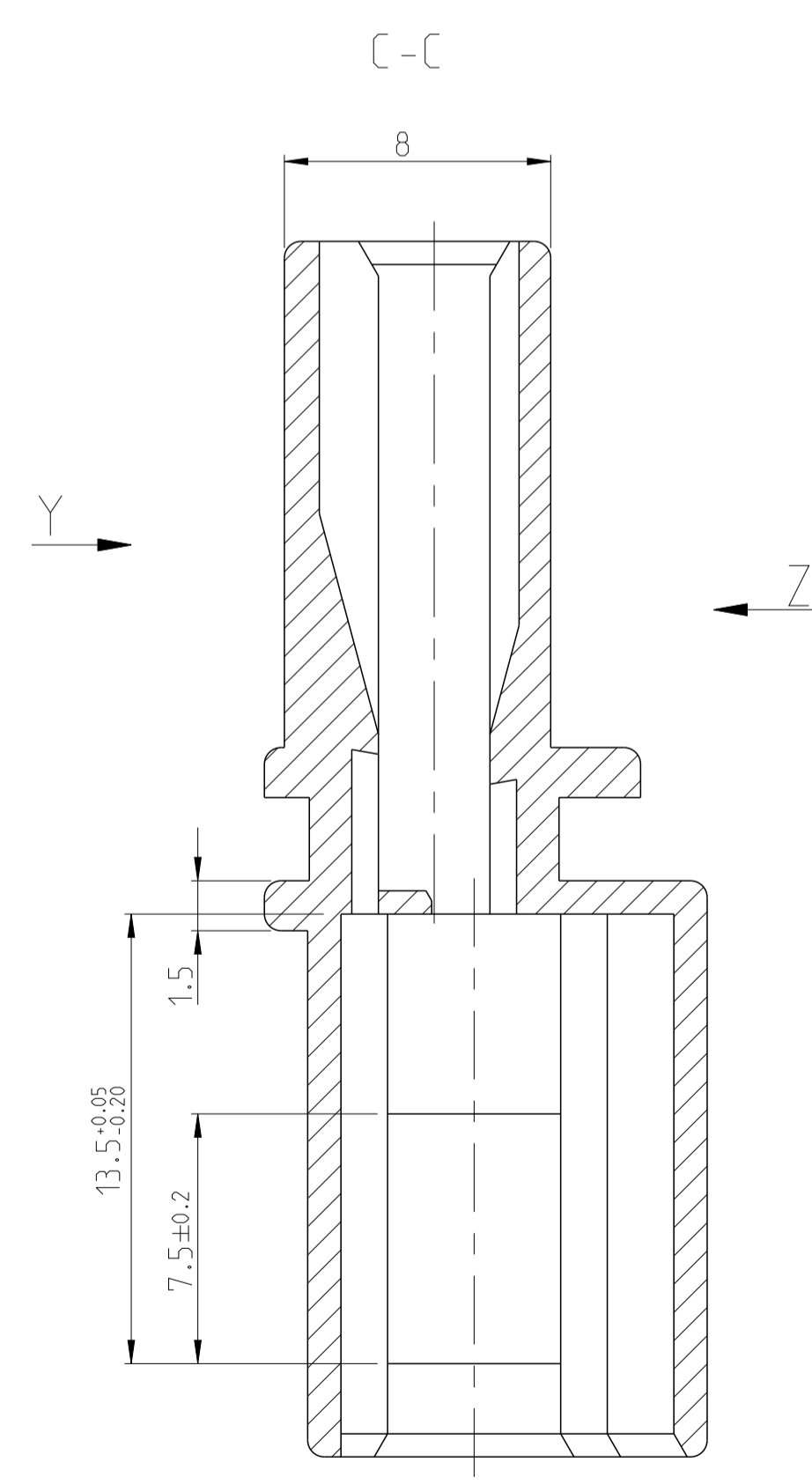


VIEW U Ansicht

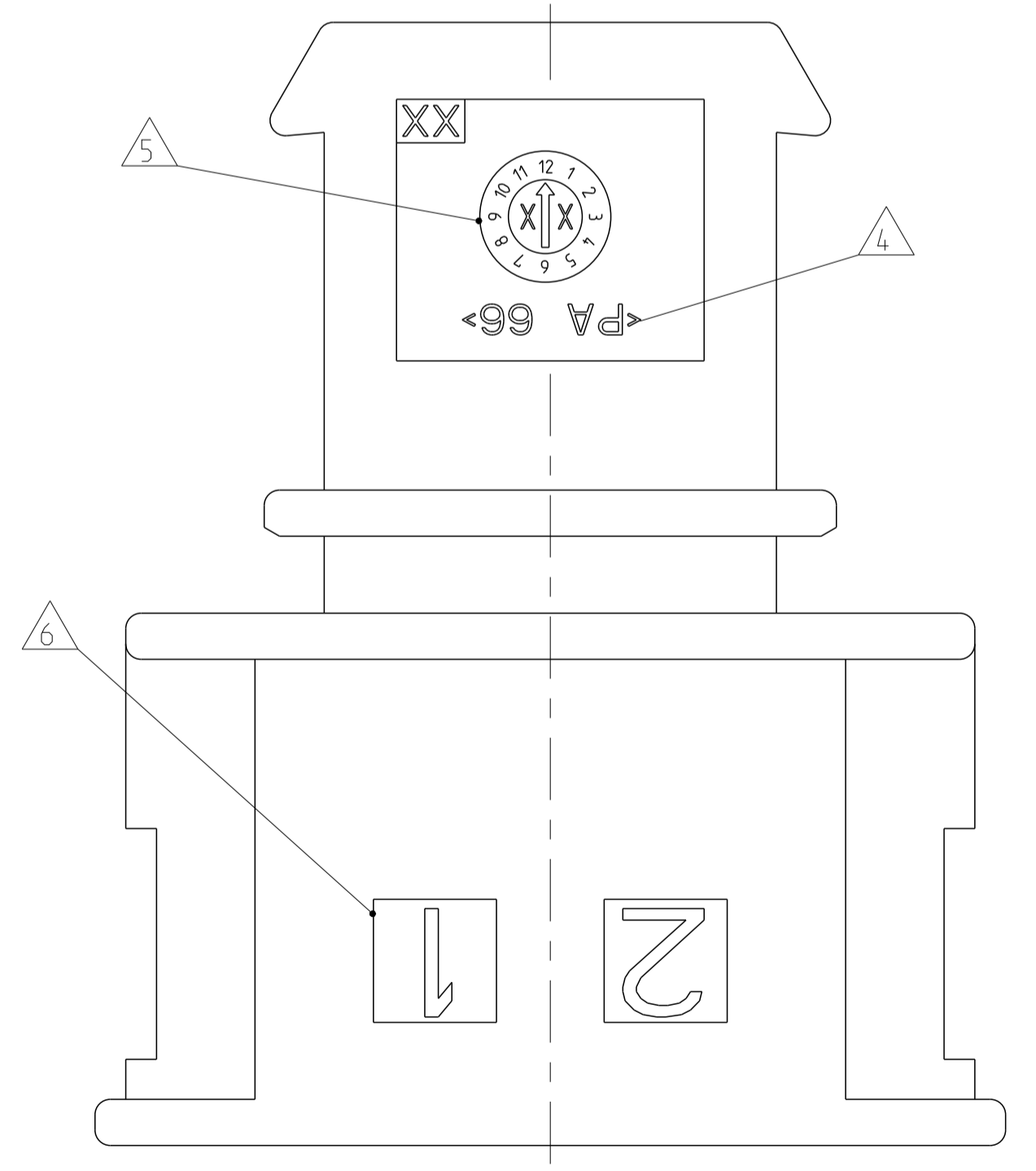


- NOTES
- 1 TE-LOGO
 - 2 TE ORDER-NO.
 - 3 TOOL REVISION INDEX
 - 4 MATERIAL-CODE ACC. TO VDA 260
 - 5 DATE OF PROCESS
 - 6 CAVITY MARKING
 - 7 USED WITH CONTACTS. SEE TABLE BELOW FURTHER CONTACT VERSIONS ON REQUEST
 - A4 8 WARPAGE UPTO 7.6mm POSSIBLE, TO BE MEASURED IN PLANE 'A'

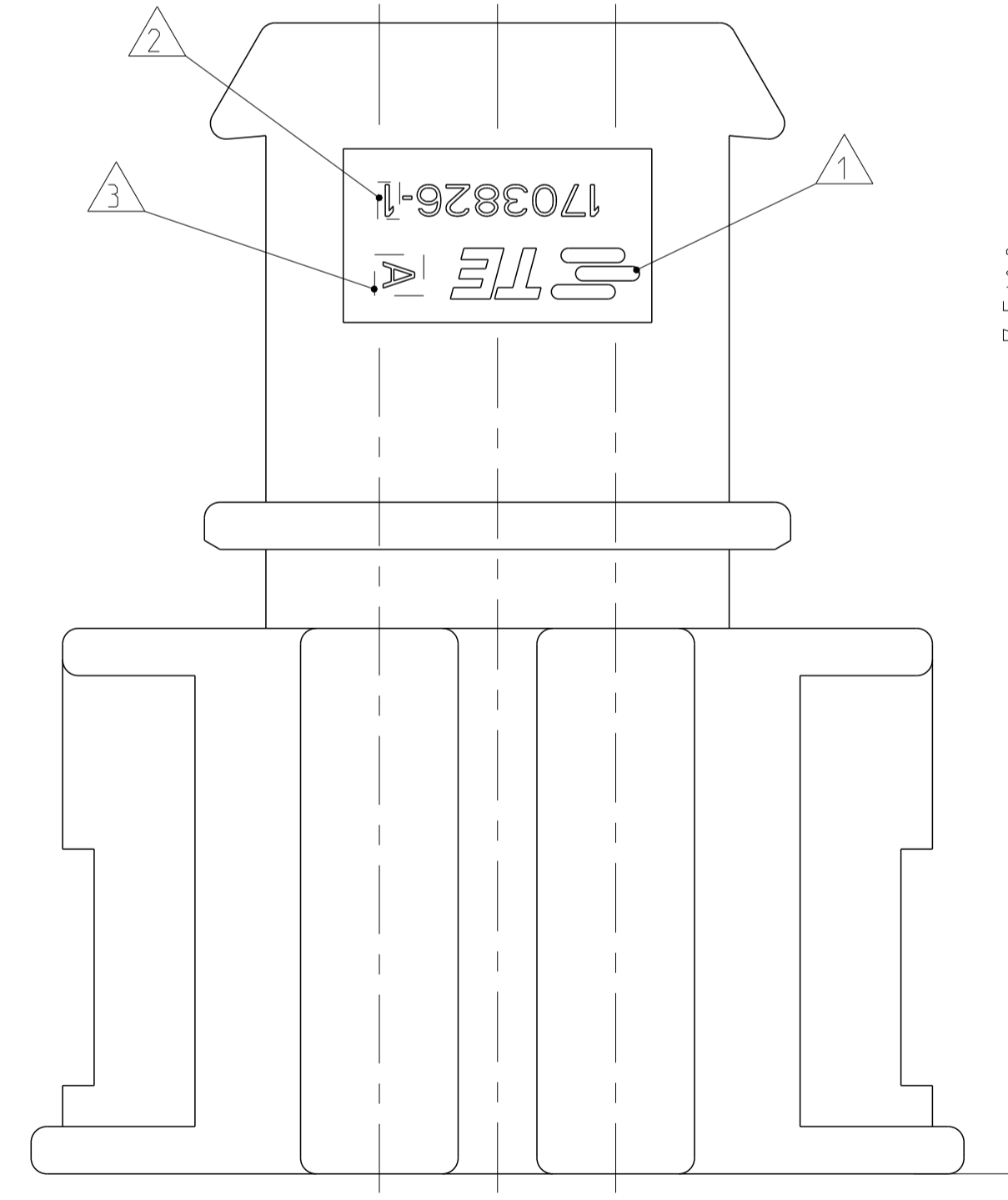
- Bemerkungen
- 1 TE-Logo
 - 2 Bestellnummer
 - 3 Werkzeugaenderungindex
 - 4 Werkstoff-kennzeichnung nach VDA 260
 - 5 Herstellungsdatum
 - 6 Kammer-Nummerierung
 - 7 Verwendet mit Kontakten siehe unten in der Tabelle, weitere Kontaktvarianten auf Anfrage
 - A4 8 Einfall bis 7.6mm zulaessig, zu messen in Ebene 'A'



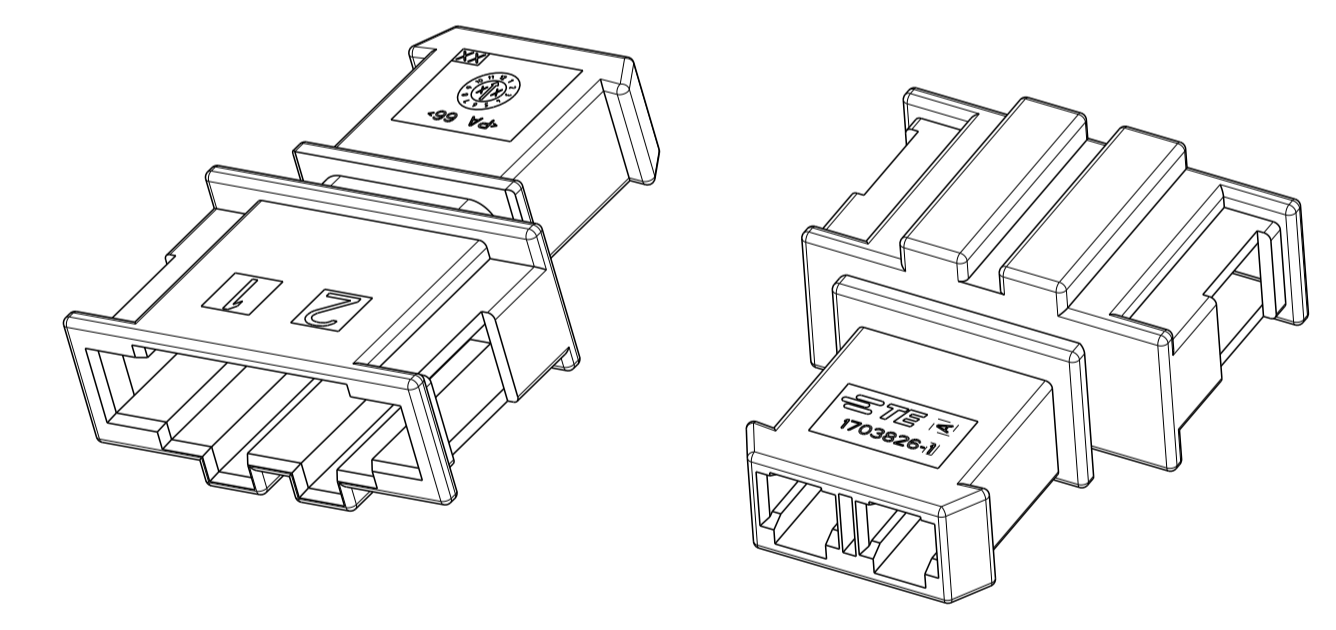
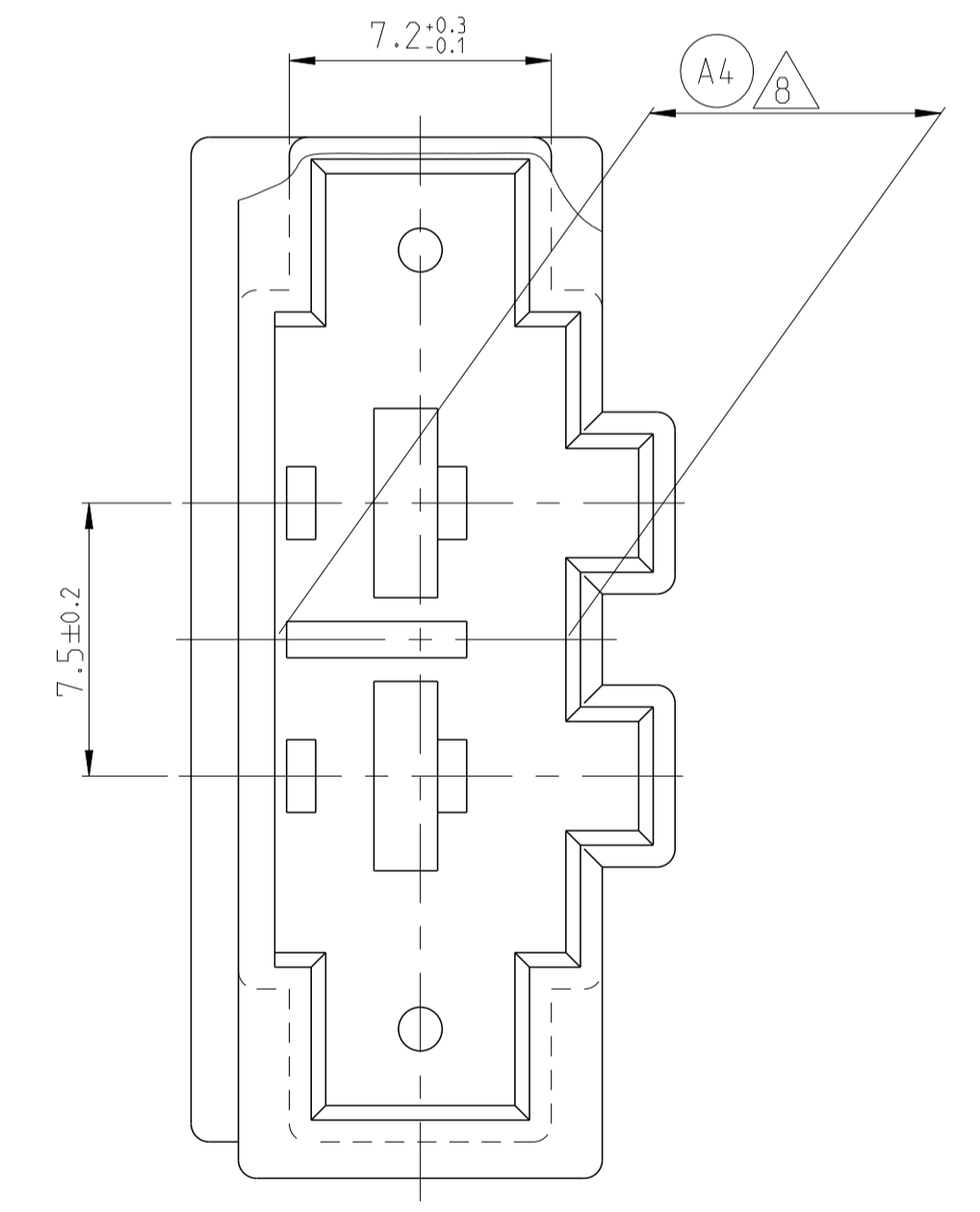
VIEW Y Ansicht



VIEW Z Ansicht



VIEW X Ansicht X



CONTACTS	TE ORDER NO. (LP)	TE ORDER NO. (STRIP)	WIRE RANGE	MATERIAL	FINISH	APPLICATION	TOOLING	
TAB 4.8MM ASYMMETRIC	963823-2	962910-2	>2.5-4.0mm ²	CuFe2	PRE TIN PLATED vorverzinkt	HAND TOOL (Handzange) 73x200-3	WITH DIE SET (mit Matrizesatz) (1-73x60x-1)	CONTACT EXTRACTION-TOOL 4-1579007-9
	963817-2	962904-2	>1.0-2.5mm ²	CuFe2	PRE TIN PLATED vorverzinkt	HAND TOOL (Handzange) 73x200-3	WITH DIE SET (mit Matrizesatz) (1-73x603-1)	Kontakt Entriegelungs-Werkzeug 4-1579007-9
	963816-2	962903-2	0.5-1.0mm ²	CuFe2	PRE TIN PLATED vorverzinkt			

PN 1703826-1 AS SHOWN wie dargestellt

PART NO	REV	MATERIAL	SURFACE/COLOUR	DESCRIPTION	ITEM NO	MATERIAL	WEIGHT	SCALE	SHEET	OF	REV
1703826-1	A	PA66	RED/rot	HOUSING, TAB 4.8MM, 2POSN Gehaeuse, Tab 4.8mm, 2Pol.	-	SEE TABLE siehe Tabelle	3.3g	5:1	1	1	A4

DIESE ZEICHNUNG IST EIN KONTROLLIERTES DOKUMENT. DIMENSIONEN UND TOLERANZEN GEMAESS GPS (ISO STANDARDS).

THIS DRAWING IS A CONTROLLED DOCUMENT. DIMENSIONING AND TOLERANCING PER GPS (ISO STANDARDS).

TE Connectivity

HOUSING, TAB 4.8MM, 2POSN
Gehaeuse, Tab 4.8mm, 2Pol.

Customer Drawing /KUNDENZEICHNUNG