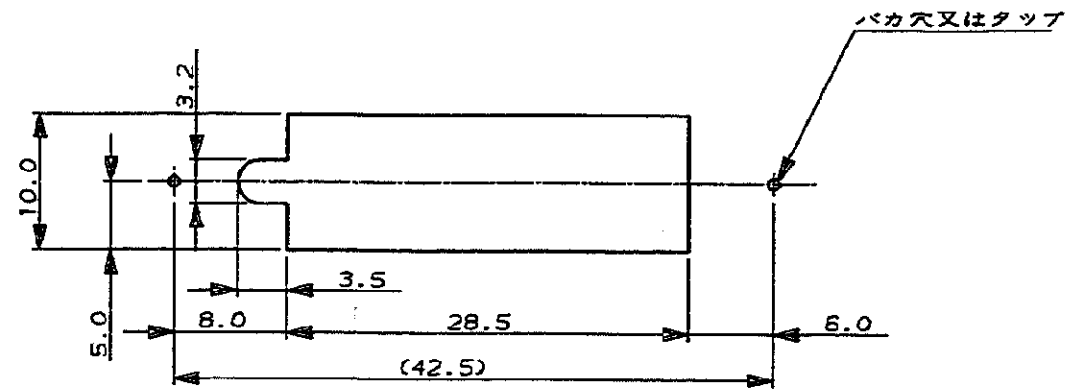
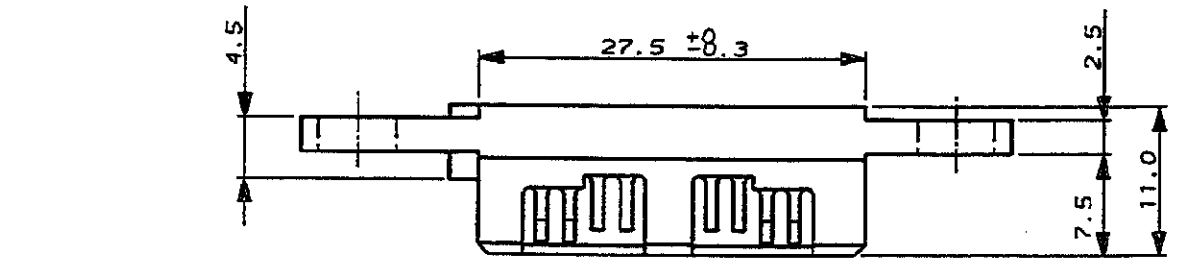
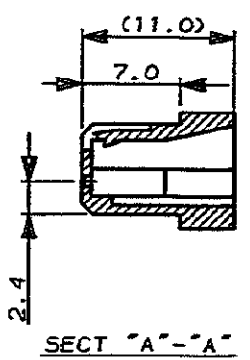
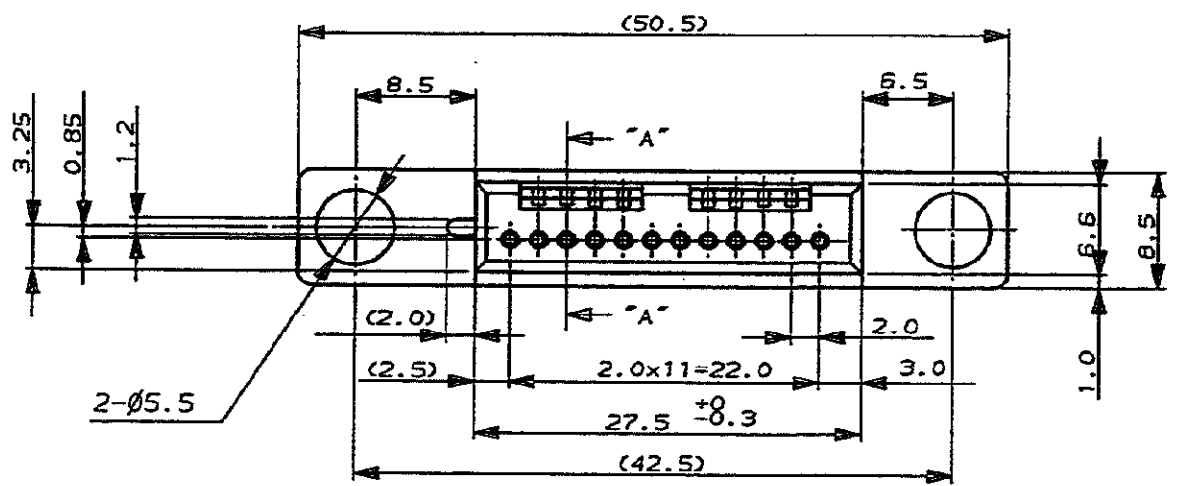


-1; AS SHOW  
本図



推奨パネルカット寸法



SECT "A"- "A"

注記

- 1.材料及び仕上げ  
ハウジング: ガラス入りP.B.T UL94V-0 色: 黒
2. 適用CTコネクター 1-175778-2, 1-173977-2.
3. かん合ポストヘッダー 175895-1.

NOTE

1. MATERIAL AND FINISH  
HOUSING: GLASS FIELD P.B.T. UL94V-0. COLOR: BLACK.
2. APPLIED CT REC CONNECTOR 1-175778-2, 1-173977-2.
3. MATING POST HEADER 175895-1.

NUMBER C-175893



METRIC

PRINT DIST  
単位: ㎜ DIMENSIONS IN MM. DO NOT SCALE PRINT

PRINT DIST

AMP-J  
REV. 10/83

				<b>AMP</b>		東京エレクトロニクス株式会社 Tokyo, Japan	
				12P FLOATING CONN. REC HOUSING (SINGLE ROW)			
				材料 (MATERIAL) SEE NOTE		仕上 (FINISH) SEE NOTE	
				材料 (MATERIAL) SEE NOTE		仕上 (FINISH) SEE NOTE	
				DR. 8/APR/92 YO. SATO		DE. 8/APR/92 YO. SATO	
				CHK. 13/MAY/92 Y. KASHIWA		APP. 13/MAY/92 Y. YOSHIMURA	
				一般公差 (GENERAL TOLERANCE) 10mm以下: ±0.2 10mm以上 30mm以下: ±0.25 30mm以上 100mm以下: ±0.3 角 度: ±3°		SIZE LOC 番号 (No.) B J C-175893	
				尺度 (SCALED) 2-1		REV. 0 SHEET 1 OF 1	

(CUSTOMER DRAWING) 参考図面