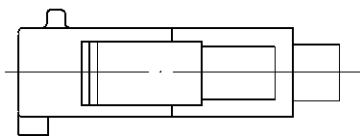
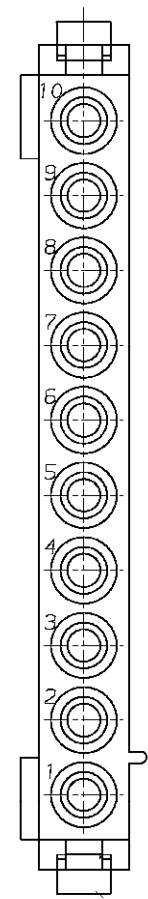
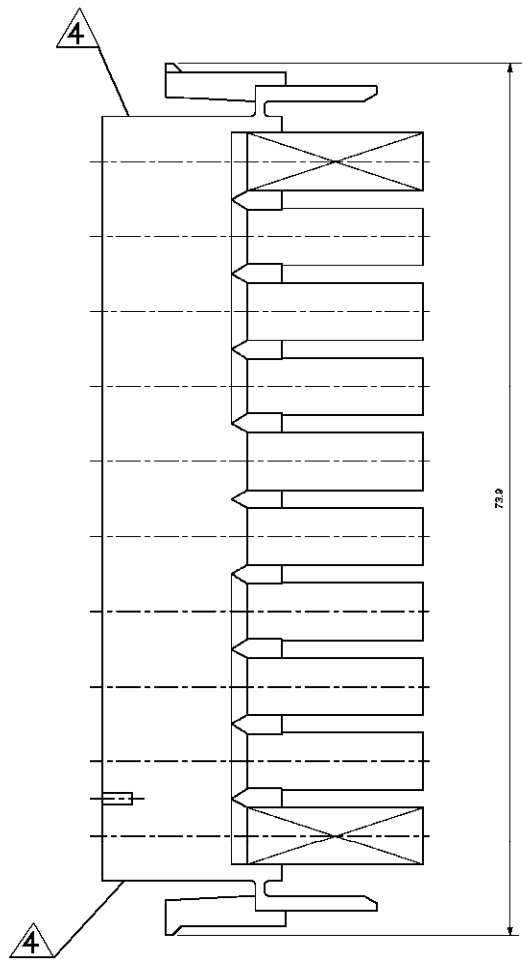
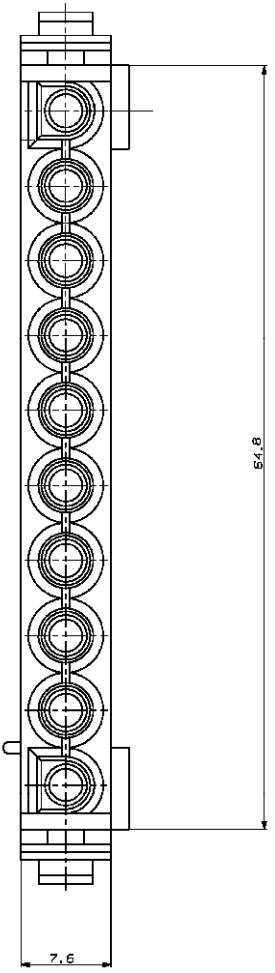


THIS DRAWING IS UNCLASSIFIED
 UNLESS INDICATED OTHERWISE. ALL RIGHTS RESERVED.

REV	DATE	DESCRIPTION	BY	CHK	APP
A1		REVISIONS			
A5		REVISED PER ECR-17-014851			
		18OCT2017			

- ① PHOSPHOR AND HALOGEN FREE A5
- ② MATERIAL CORRESPONDING TO THE REQUIREMENTS OF IEC 60335-1 INCLUDING GLOW WIRE TEST 750°C WITHOUT FLAME
- ③ PRELIMINARY PART NOT RELEASED FOR PRODUCTION
- ④ CSA LOGO LOCATED ON AT LEAST ONE SIDE OF THE HOUSING APPROXIMATELY AS SHOWN
- 5 DIMENSIONS SHOWN REPRESENT PRODUCT IN DRY, AS MOLDED, CONDITION. ADDITIONAL 2% GROWTH DUE TO SUBSEQUENT MOISTURE ABSORPTION MAY OCCUR AND SHOULD BE ACCOUNTED FOR.



THIS DRAWING IS A CONTROLLED DOCUMENT		DESIGNED BY: J. BALD	REVISIONS
DRAWN BY: (blank)		CHK: J. LAZARO	DESCRIPTION
CHECKED BY: (blank)		APP: L. BAILLIE	DATE
MATERIAL: (blank)		PROJ: (blank)	11418011
REV: (blank)		SCALE: 4:1	SHEET: 1 OF 1
REV: (blank)		DATE: 18OCT2017	BY: A5

PA6 UL94 V-0	NATURAL	1-1863004-2
PA6 UL94 V-0	NATURAL	1-1863004-1
PA6 UL94 V-0	NATURAL	① ② ③ 1863004-1
MATERIAL	COLOR	PART NUMBER

UNIVERSAL MNL 10 WAY HOUSING
100 9031
PRODUCTION SPEC
11418011
REV: A1 00779
CUSTOMER DRAWING