

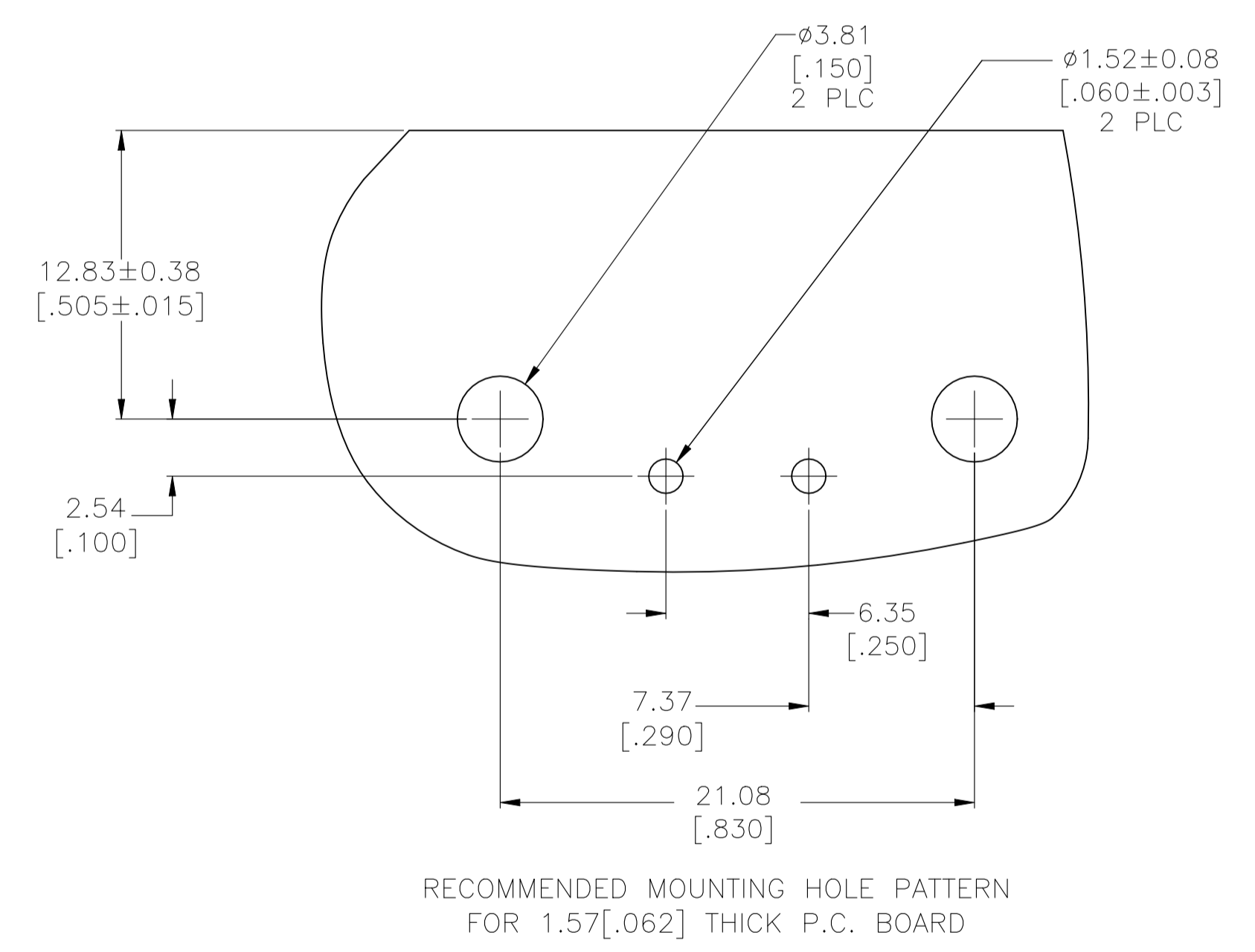
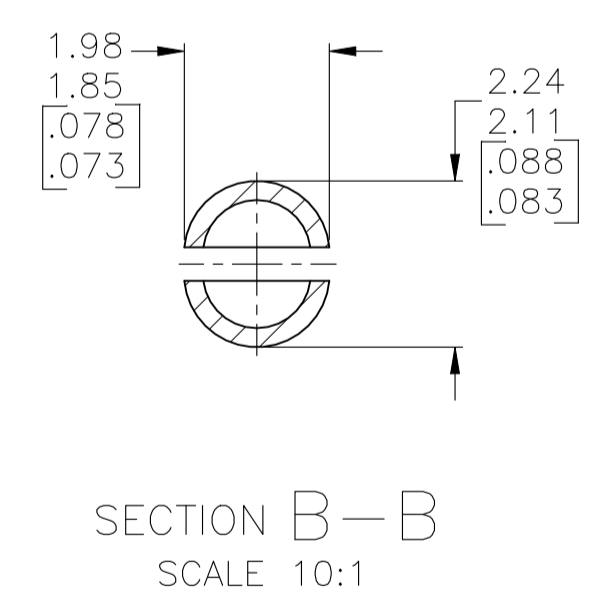
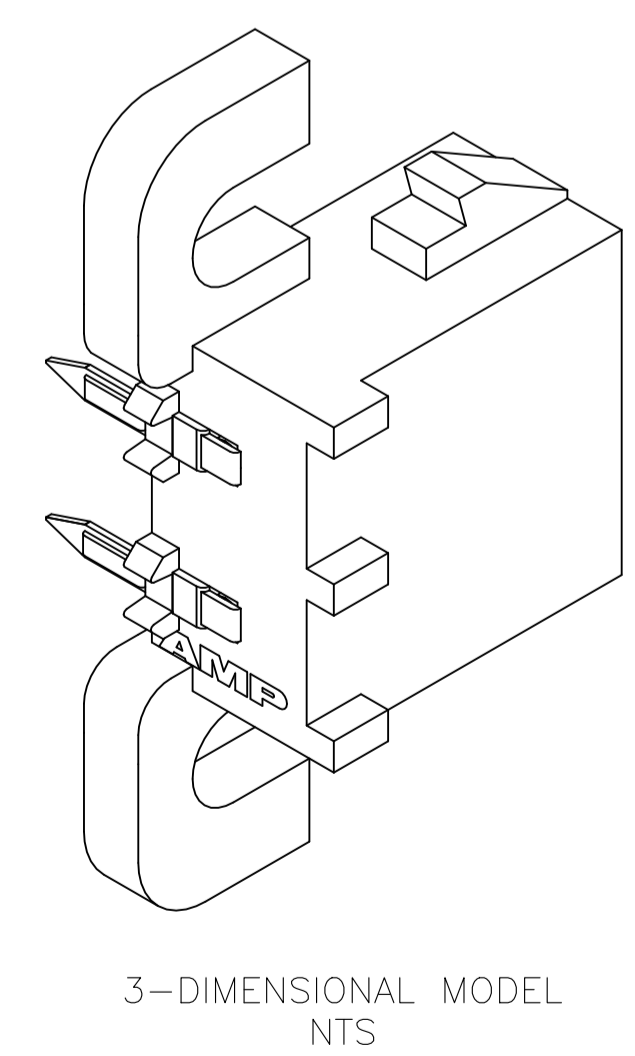
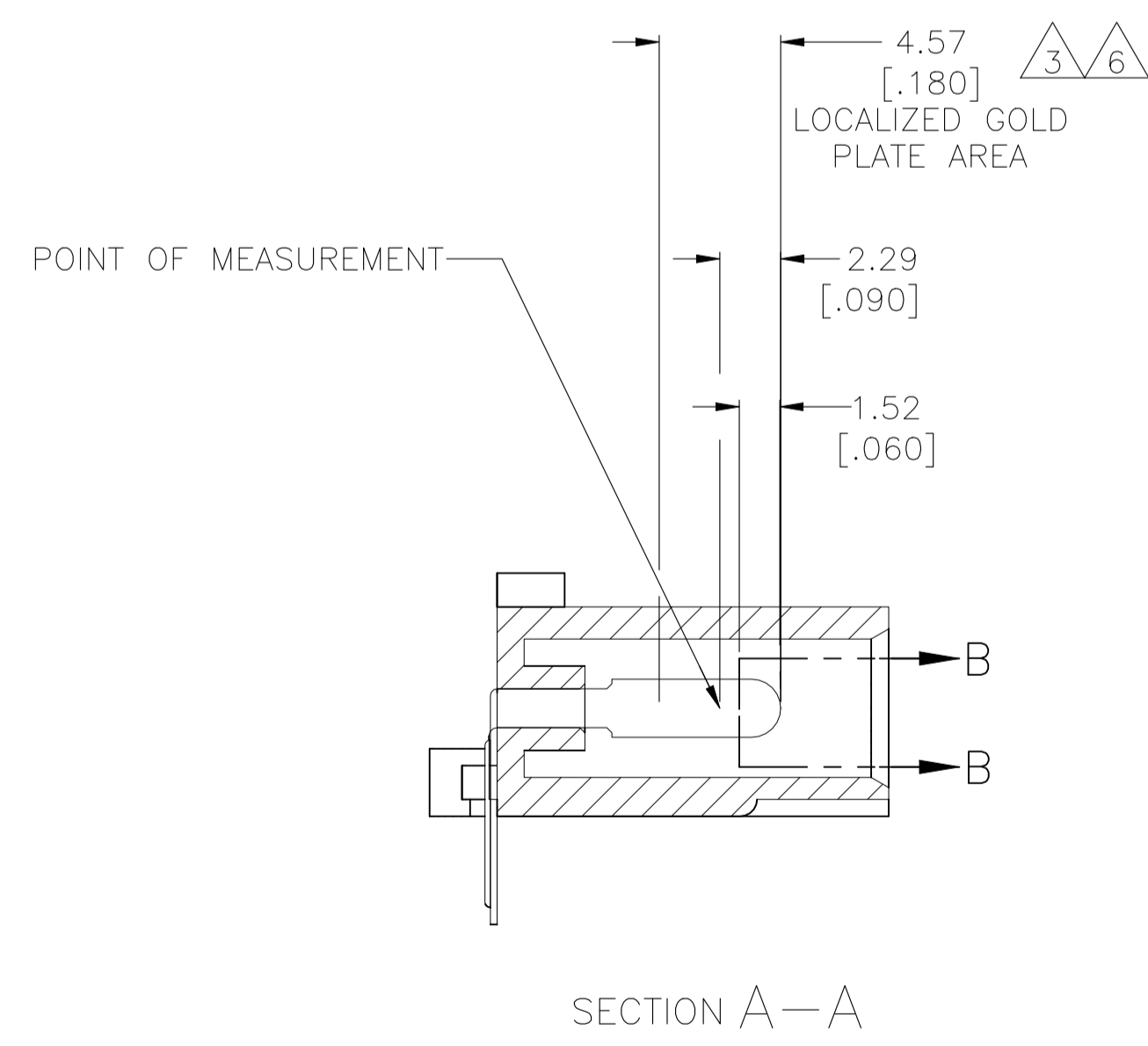
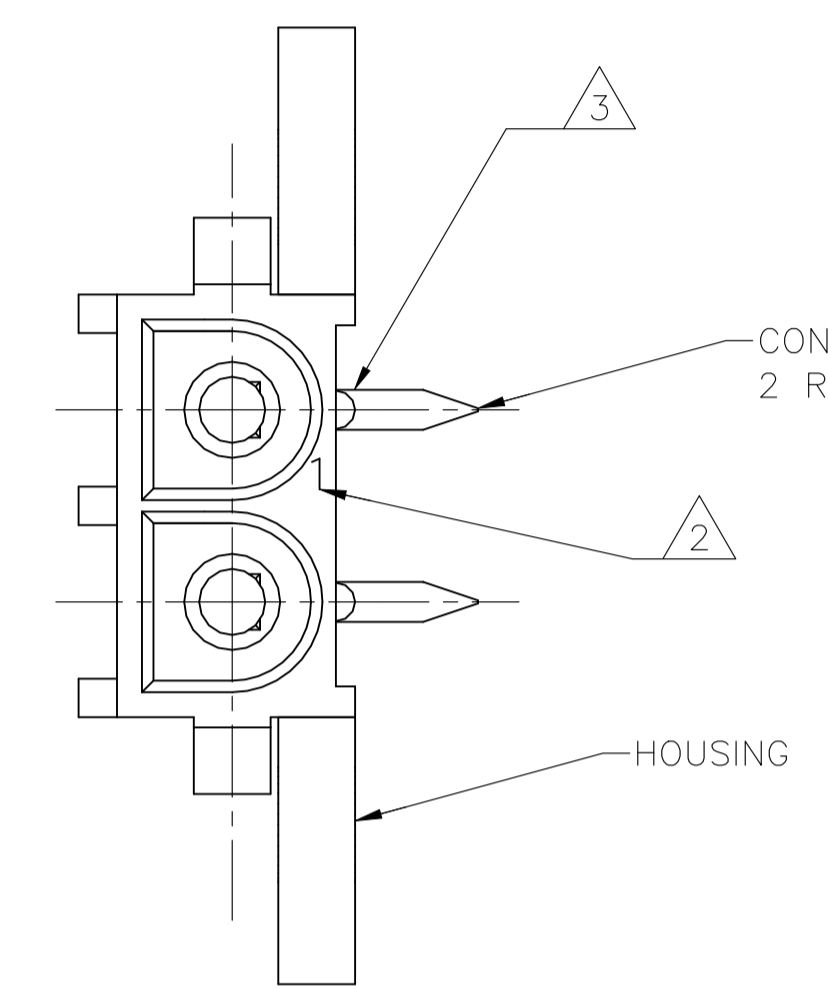
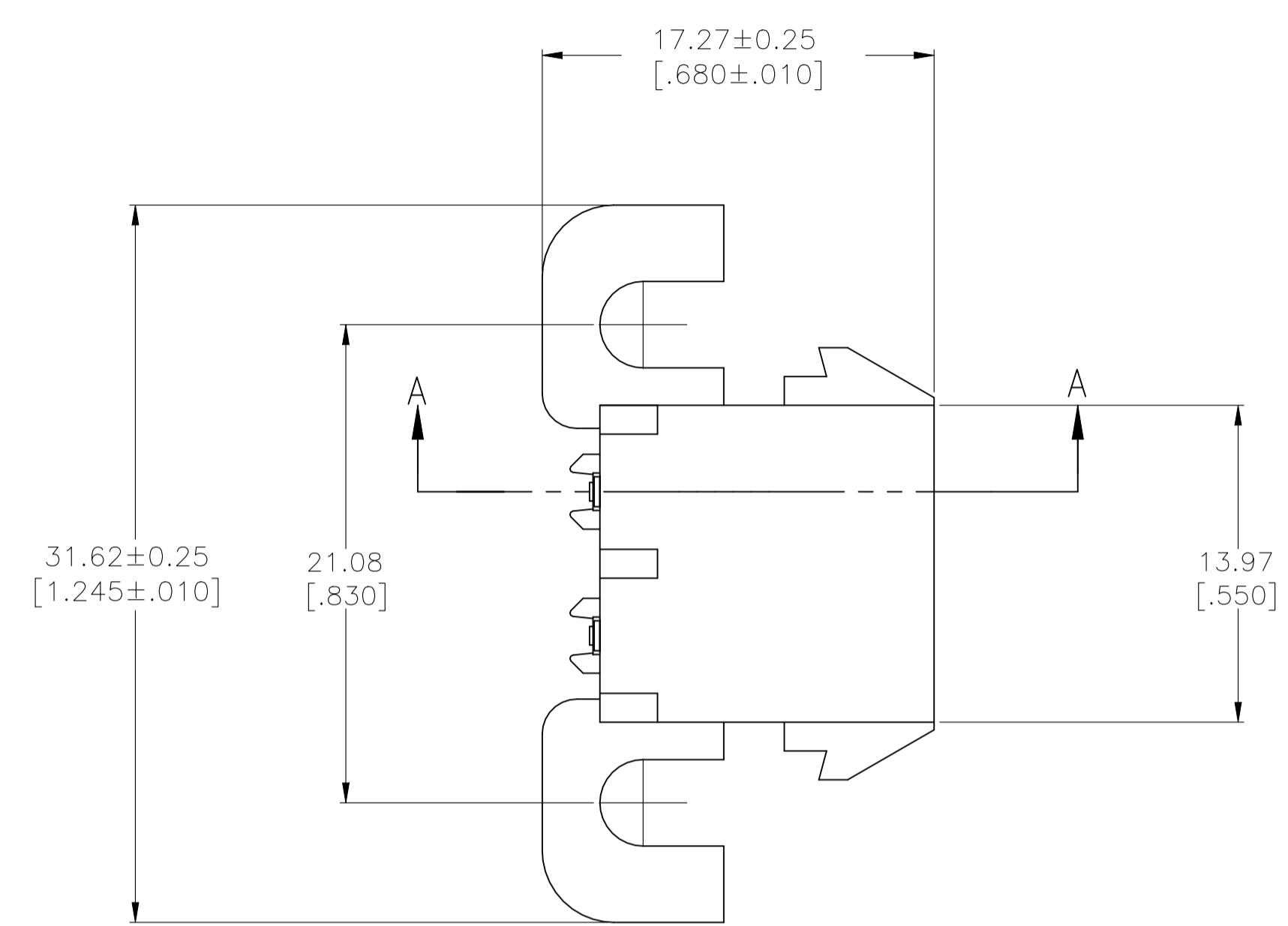
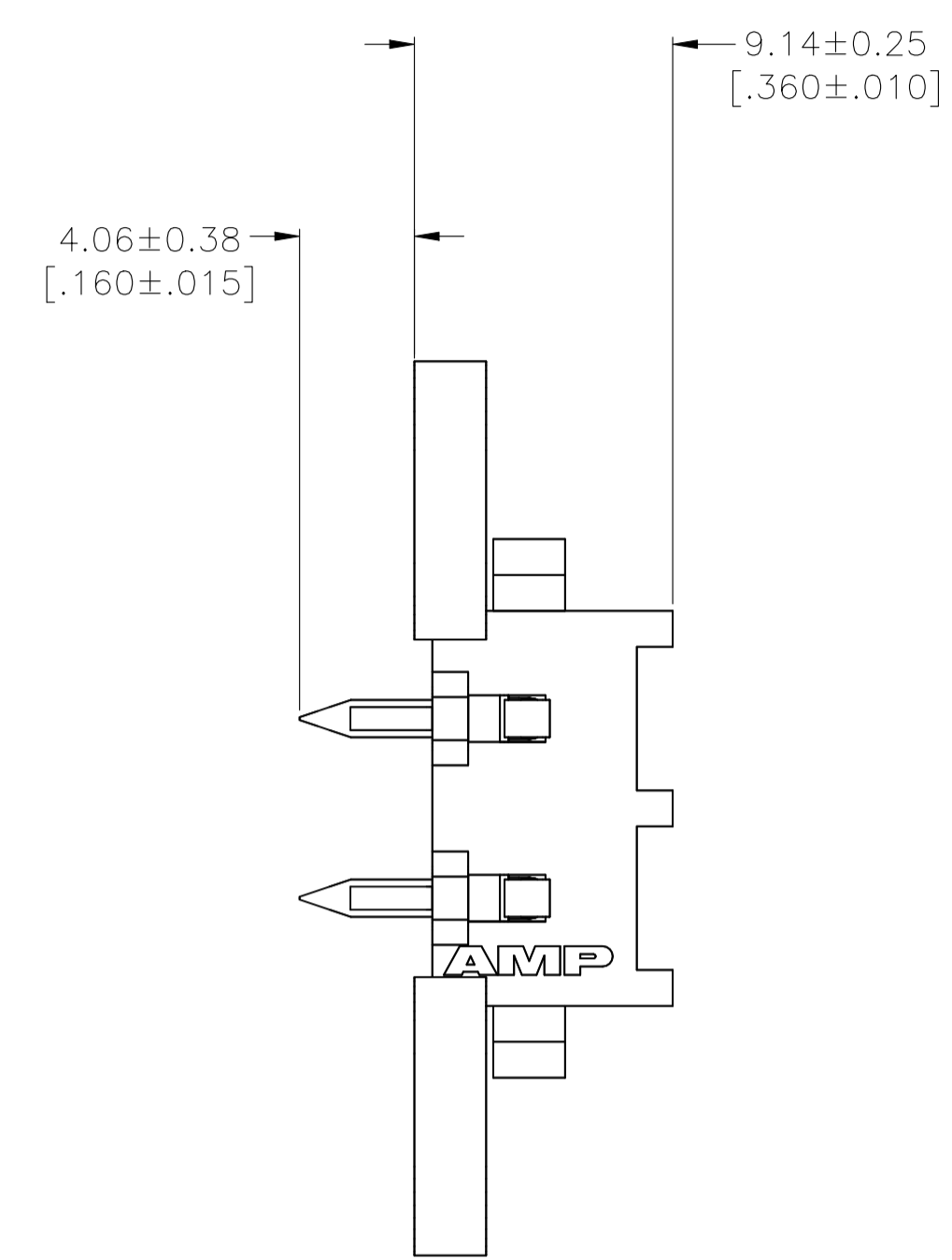
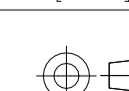


REVISIONS					
REV	DATE	DESCRIPTION	BY	CHK	APP'D
A1	02NOV2021	REVISED PER ECR-21-119230	SS	VS	

- 1 PARTS COMPLY WITH AMP SOLDERABILITY SPECIFICATION 109-11-5.
- 2  CIRCUIT IDENTIFICATION CHARACTERS ARE ADJACENT TO THE INDICATED CAVITIES, BUT LOCATION AND ORIENTATION MAY DIFFER FROM PRINT.
- 3  OPTIONAL CONSTRUCTION MAY DELETE THIS RIB.
- 4 DIMENSIONS IN BRACKETS ARE IN INCHES.
- 5 FLAMMABILITY UL V-0 FOR THICKNESS 0.4, 0.45, 0.8, 1.6, AND 3.0 PER IEC 60695-11-10.
- 6 GLOW WIRE FLAMMABILITY (GWF): 960°C FOR THICKNESS 0.45, 0.8, 1.6, AND 3.0 PER IEC 60695-2-12.
- 7 GLOW WIRE IGNITION (GWIT): 825°C FOR THICKNESS 0.45, 800°C FOR THICKNESS 0.8, 775°C FOR THICKNESS 1.6 AND 3.0 PER IEC 60695-2-13.
- 8 DIMENSIONS SHOWN REPRESENT PRODUCT IN DRY CONDITION. ADDITIONAL 2% GROWTH DUE TO END USE LOCATION MOISTURE ABSORPTION MAY OCCUR AND SHOULD BE ACCOUNTED FOR.



PH BRZ TIN	NYLON UL V-0 GW	1969796-1
CONTACT	HOUSING	PART NO

THIS DRAWING IS A CONTROLLED DOCUMENT.		DIN 26DEC2015		EASVESH WARAD	
DIMENSIONS: mm [INCHES]		TOLERANCES UNLESS OTHERWISE SPECIFIED:		CHK 26DEC2015	
		0 PLC ± -		APVD WICKES, EVAN	
		1 PLC ± -		NAME	
		2 PLC ± -		PRODUCT SPEC	
		3 PLC ± 0.13(.005)		APPLICATION SPEC	
4 PLC ± -		ANGLES ± 0°30'		SIZE CAGE CODE DRAWING NO	
MATERIAL SEE TABLE		FINISH SEE TABLE		WEIGHT 0.000000	
				A1 00779C=1969796	
				CUSTOMER DRAWING SCALE 4:1 SHEET 1 OF 1 REV A1	