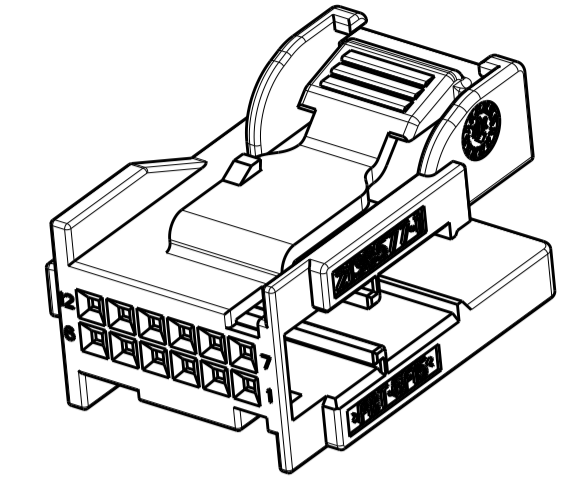
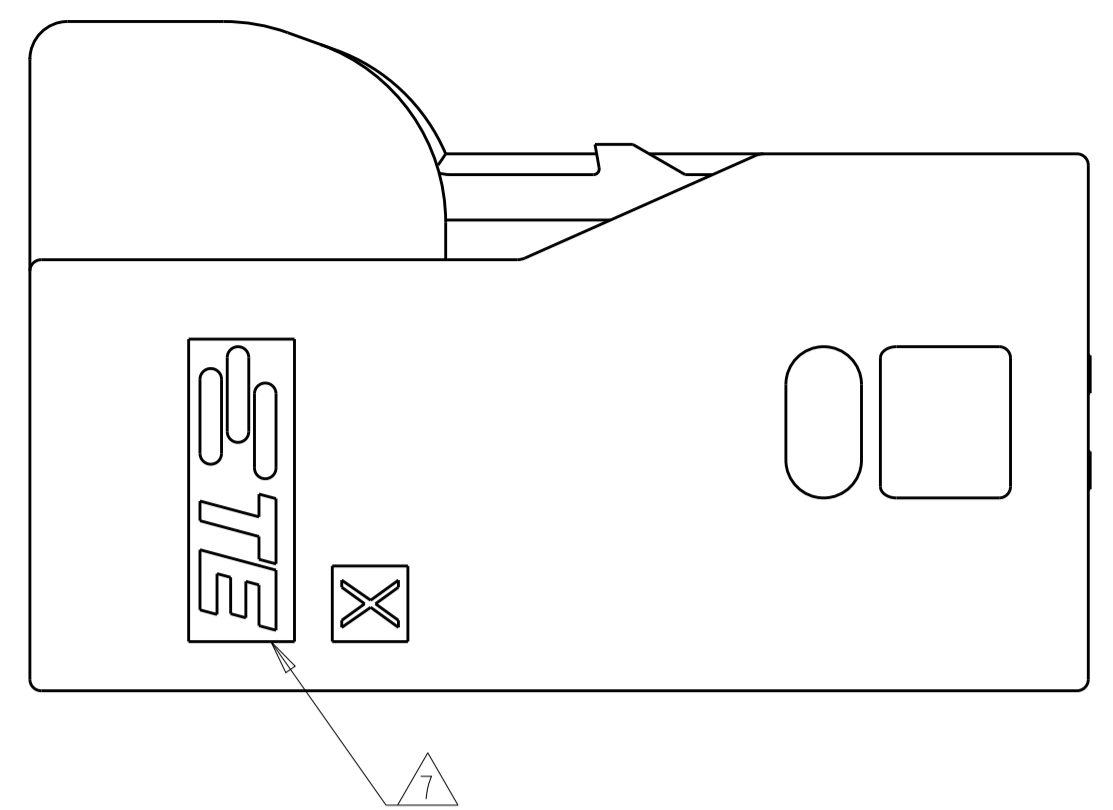
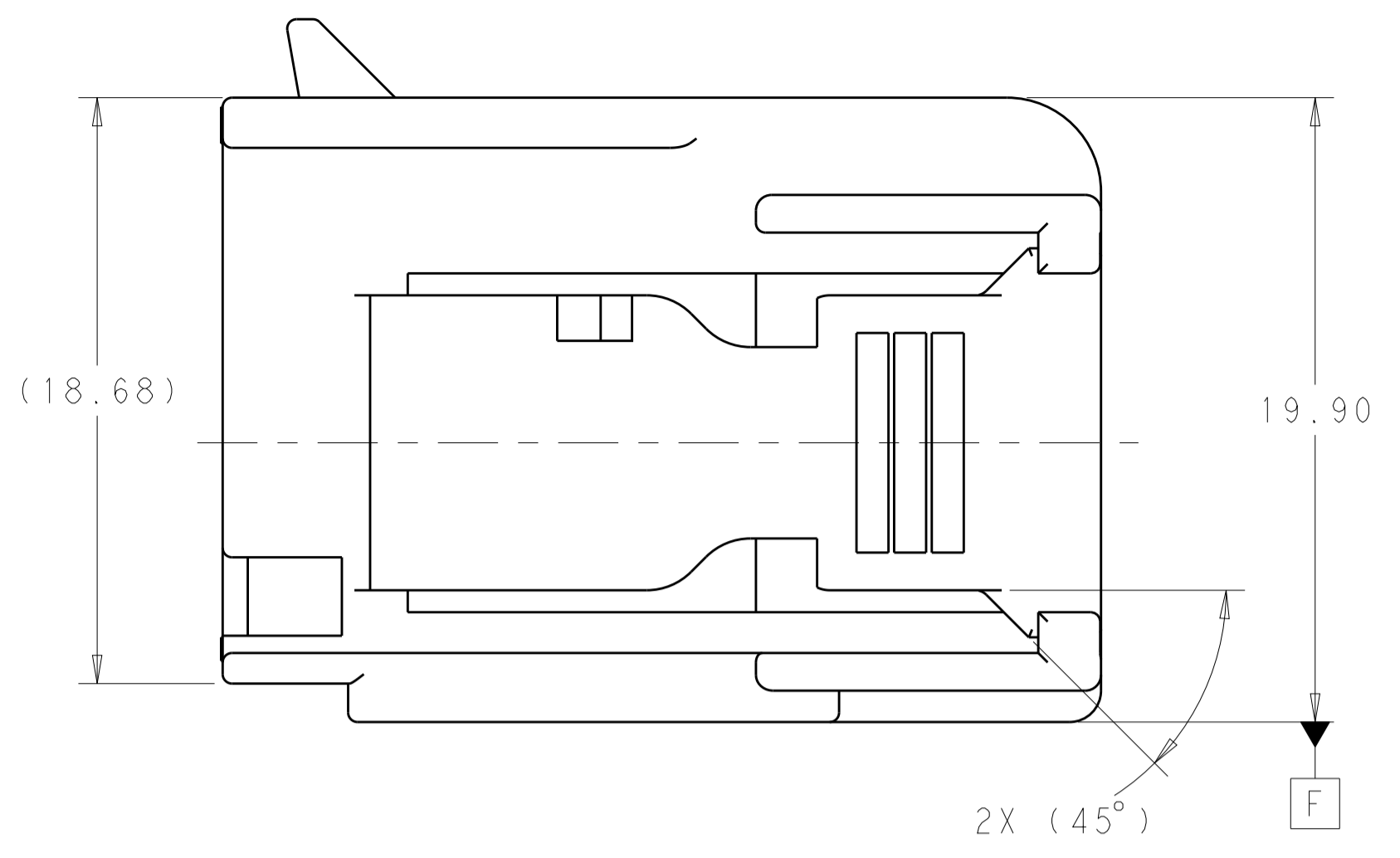
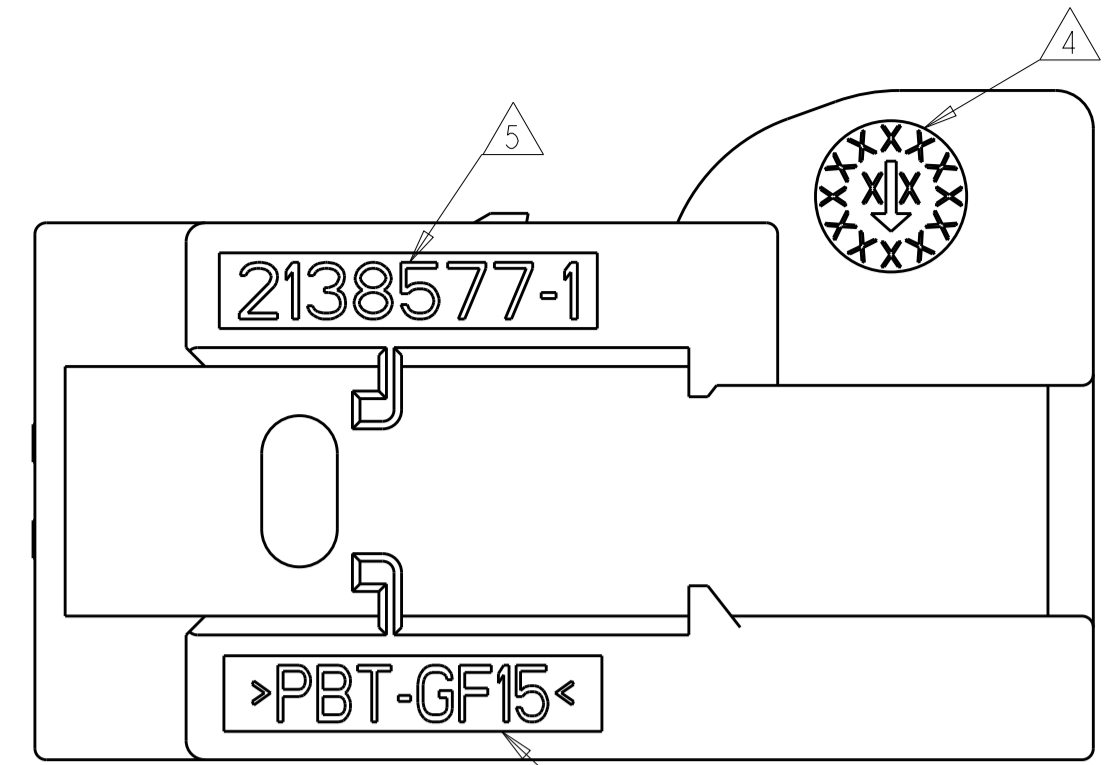
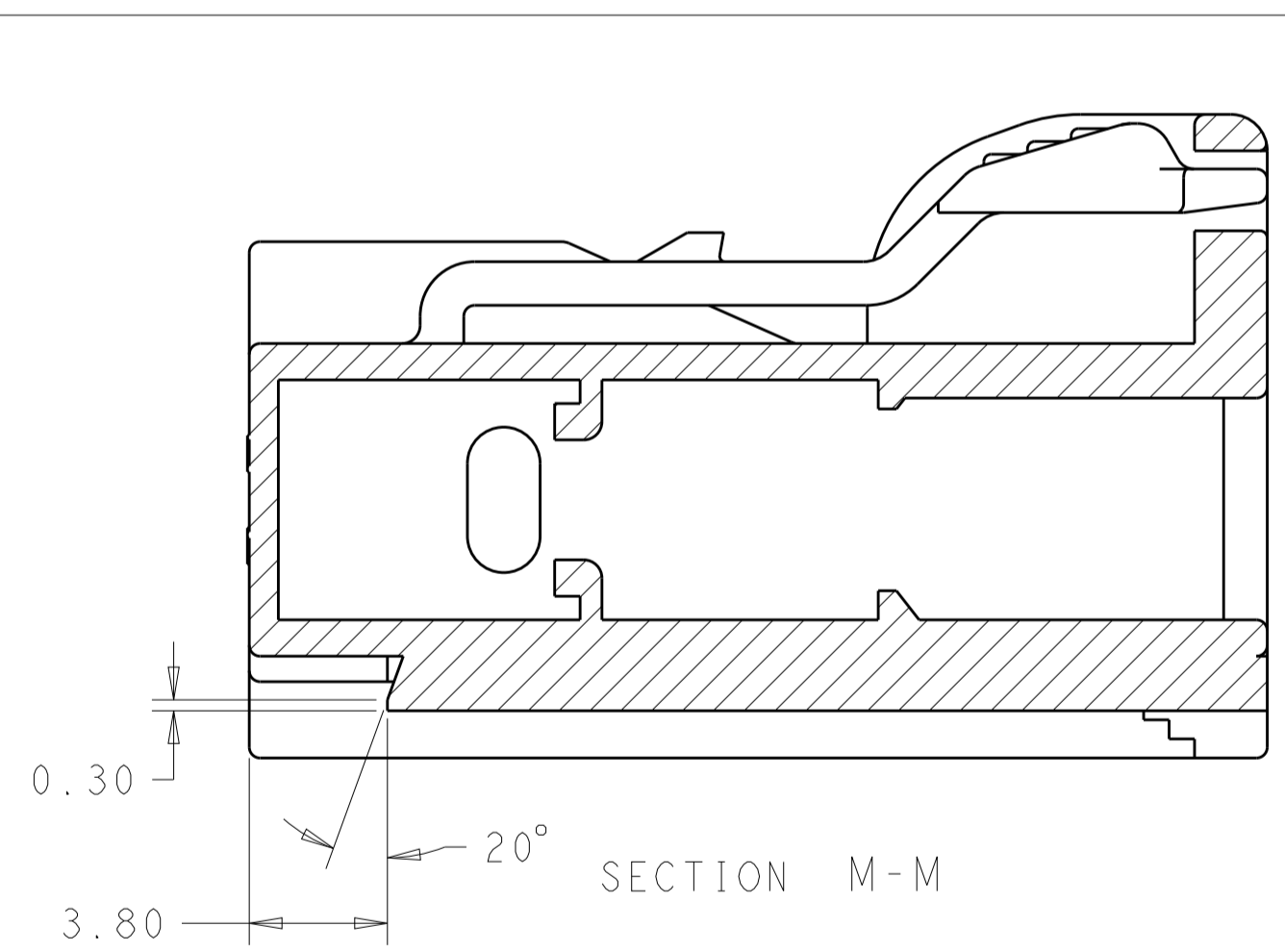
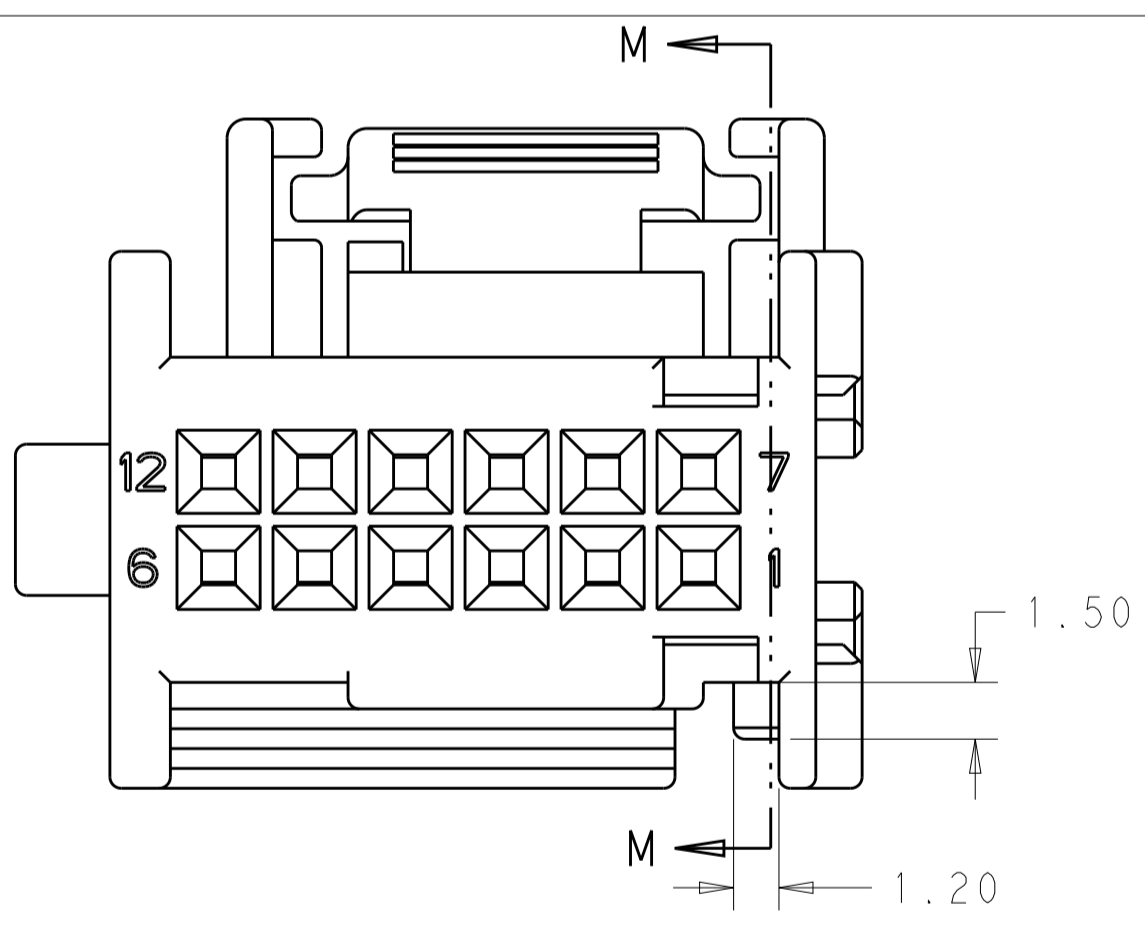
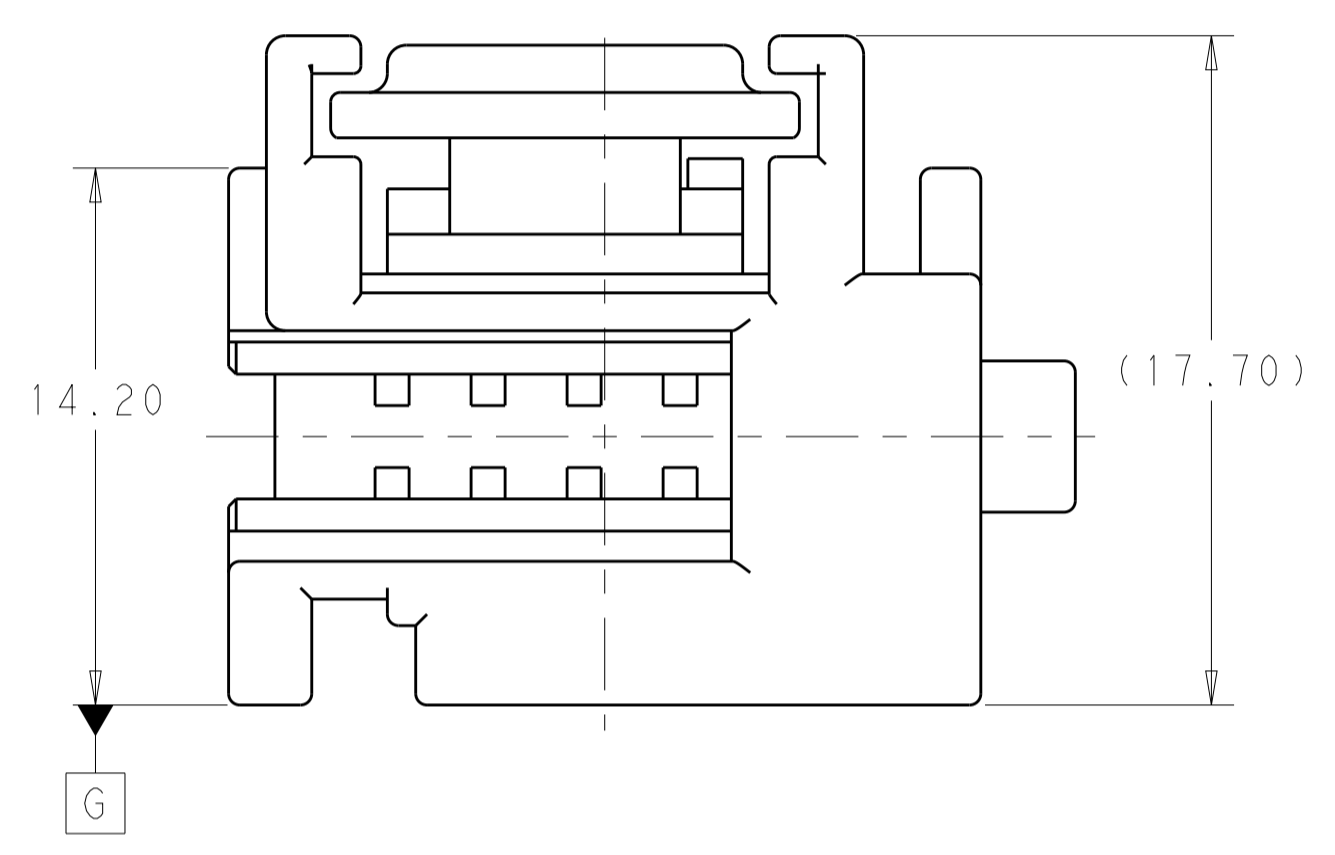
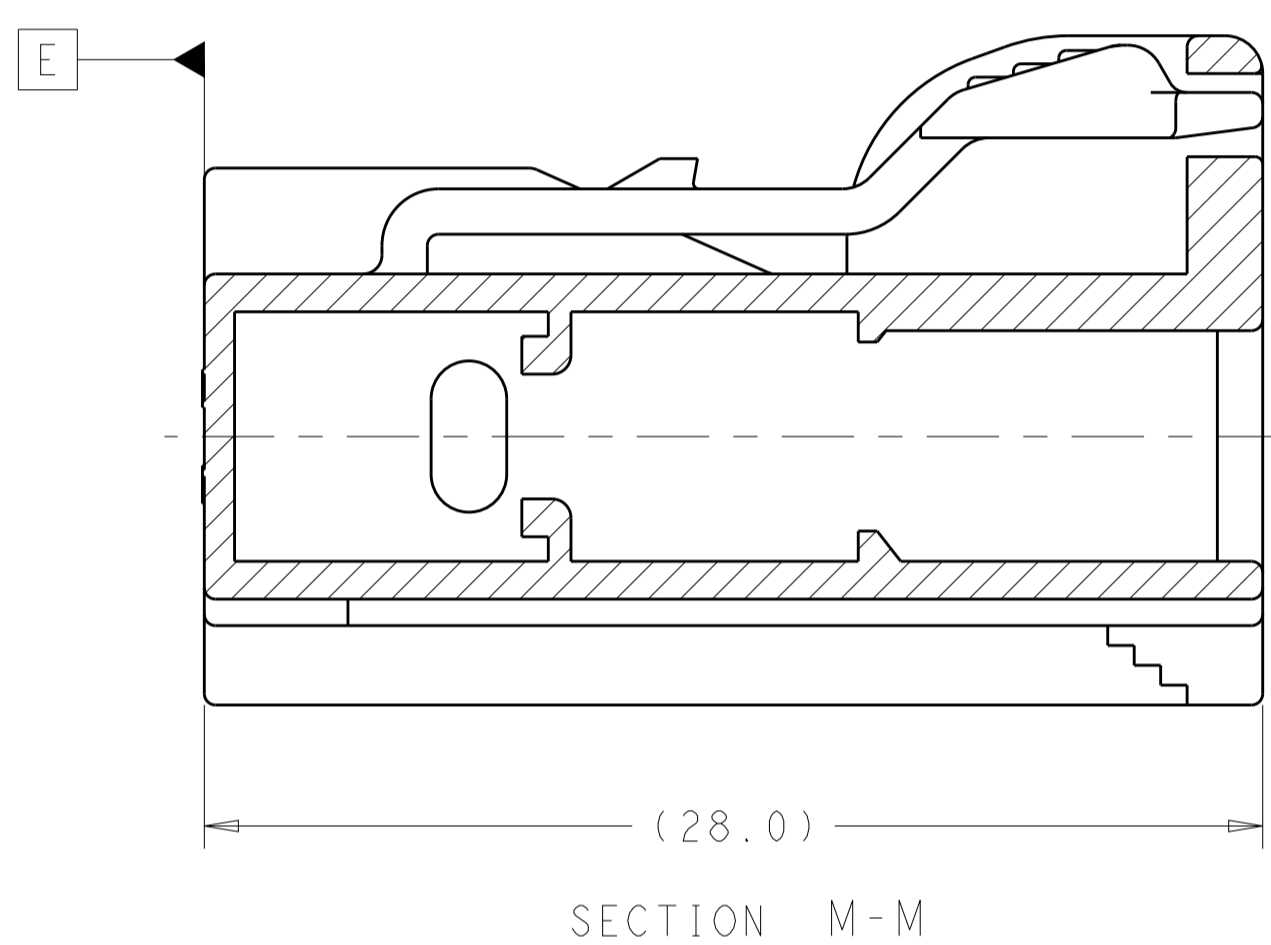
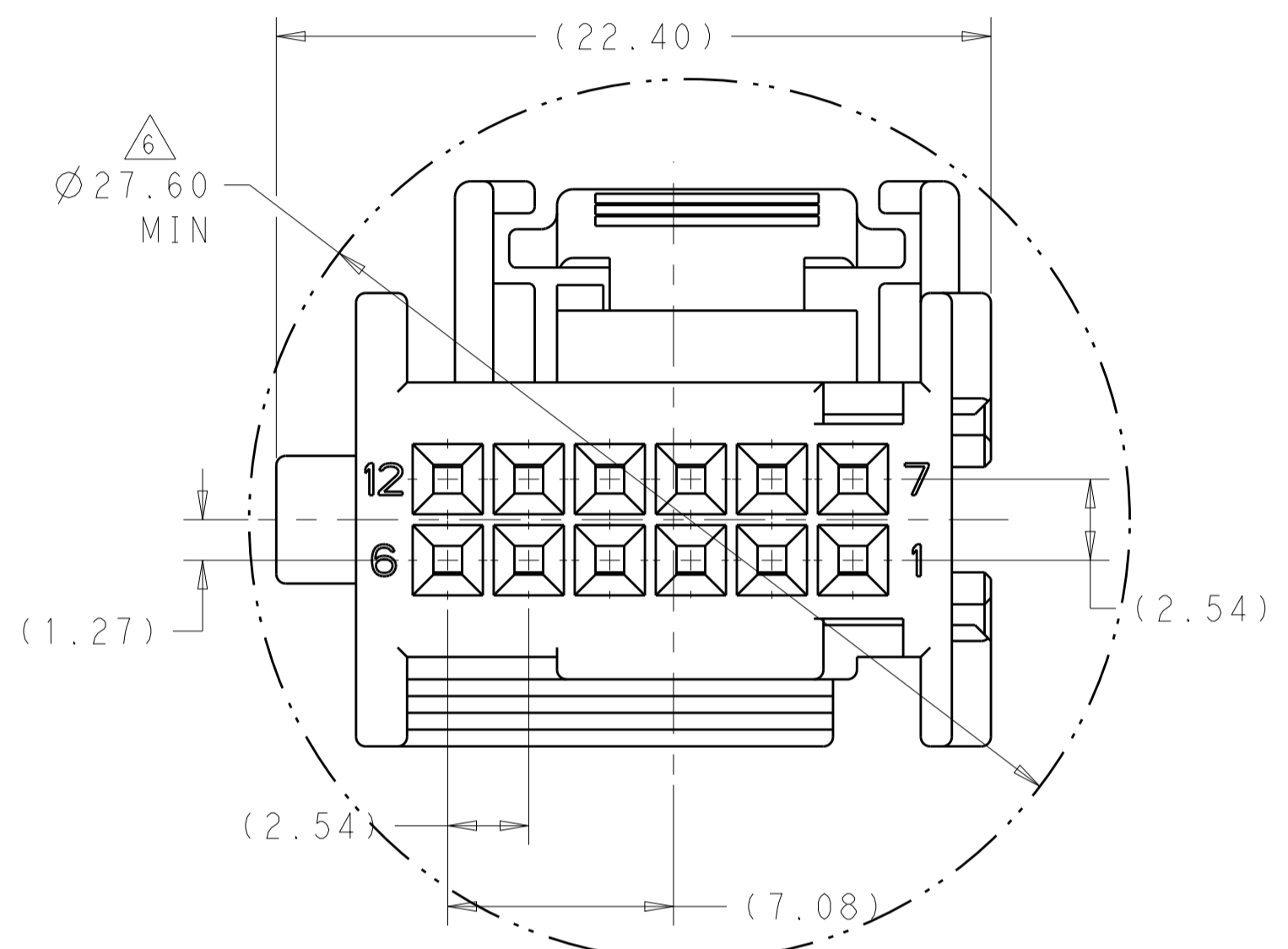
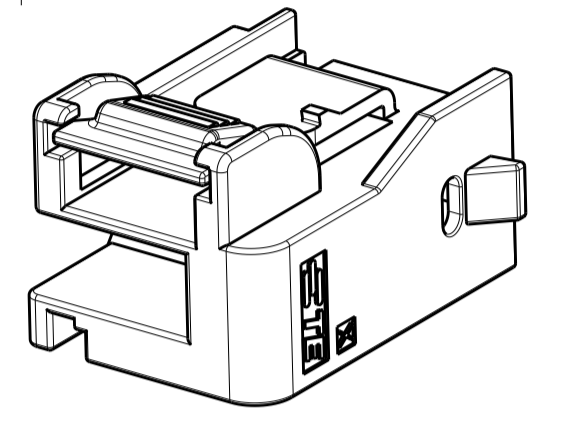


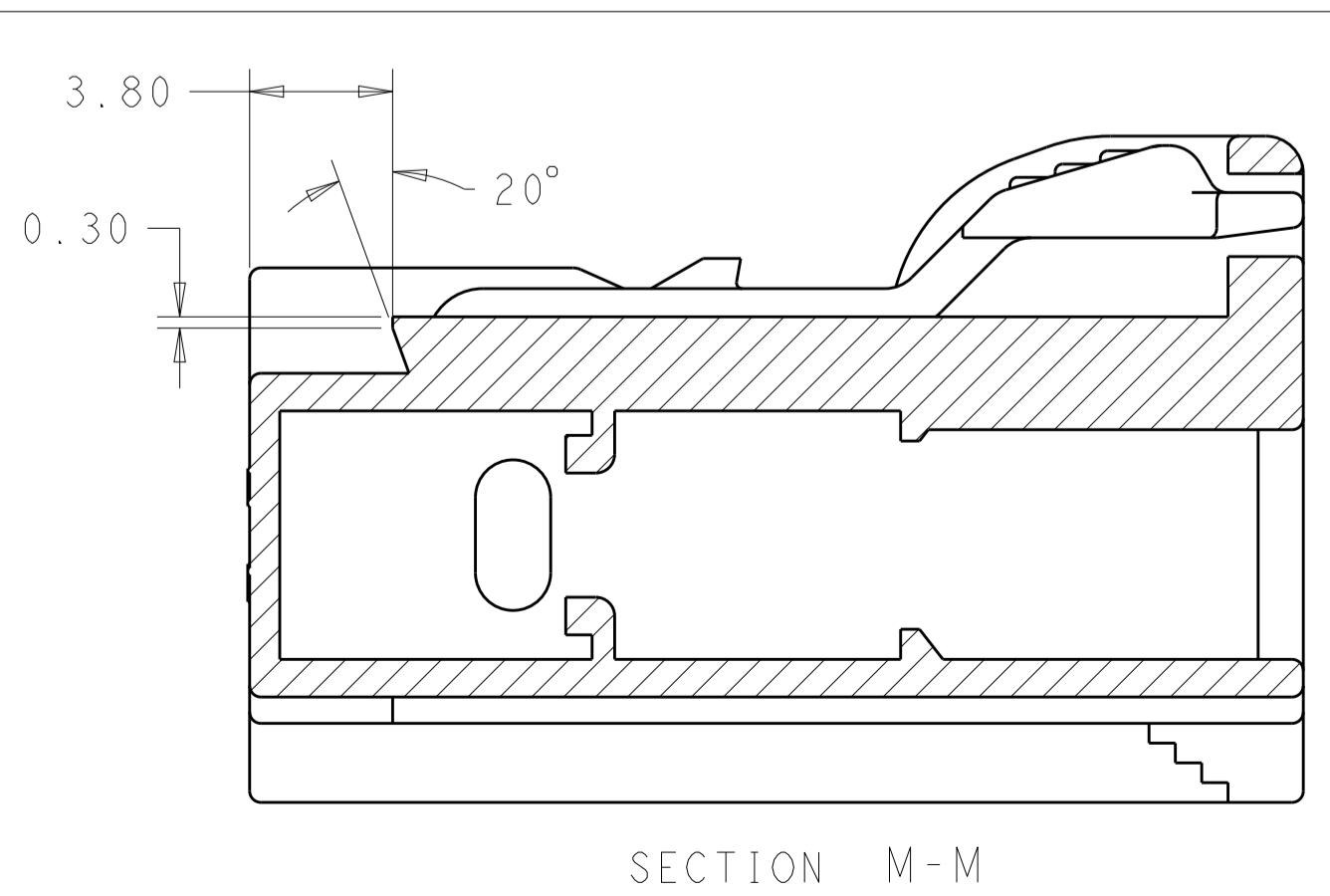
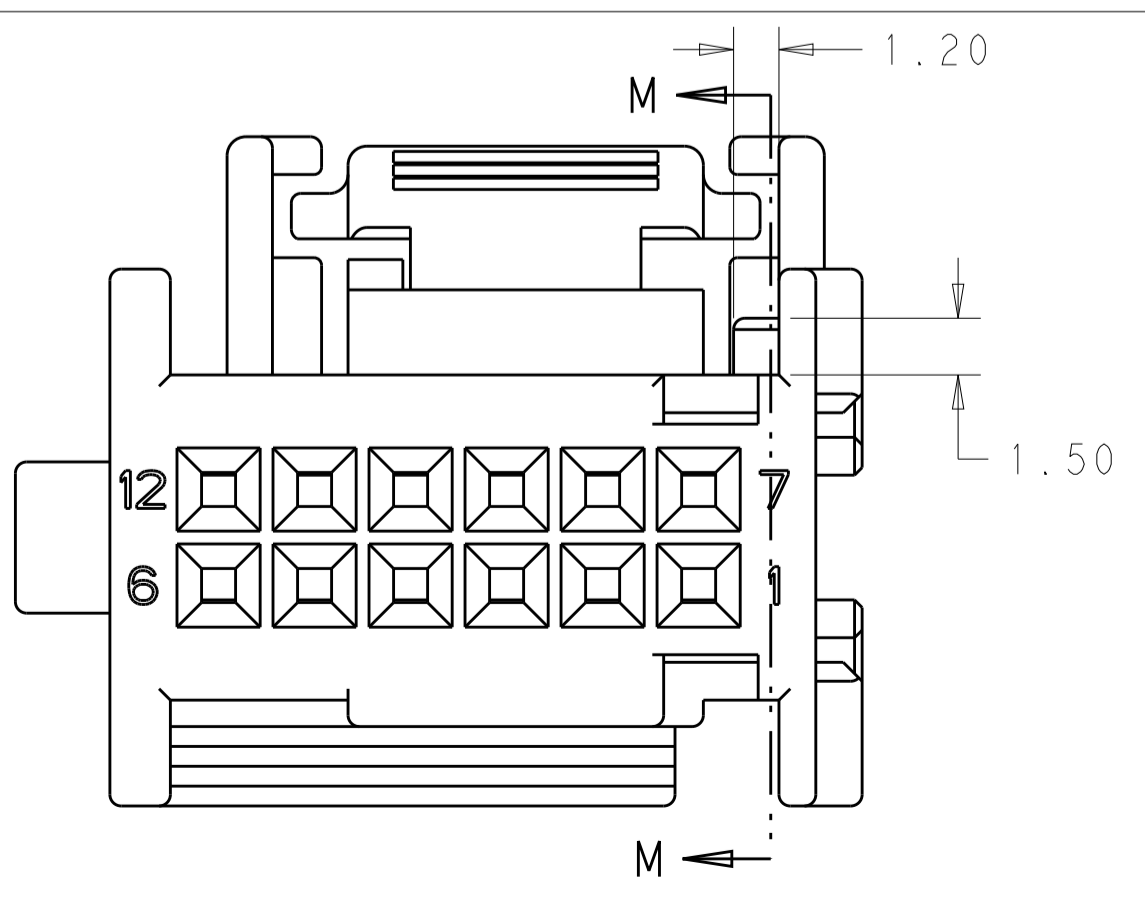
LOC	DIST	REVISIONS					
		P	LTN	DESCRIPTION	DATE	DWN	APVD
IN	00	1		INITIAL DRAWING	19JAN2012	SR	GM
		A		RELEASED FOR PRODUCTION	15MAR2012	MB	MB
		B		REVISED PER ECR-12-014673	21AUG2012	MBH	MB



ISOMETRIC VIEWS
SCALE 2:1



2138557-2 KEYING OPTION - A



2138557-3 KEYING OPTION - B

- 1 MATERIAL: PBT 15% GLASS FILLED, COLOR: BLACK.
- 2. TE PART NUMBER 2138557-1 SHOWN IN GENERAL VIEWS.
- 3 MATERIAL ID >PBT GF15< SHOWN ON APPROXIMATE AREA.
- 4 DATE CODE INDICATOR IN THIS APPROXIMATE AREA.
- 5 TE PART NUMBER TO BE SHOWN ON APPROXIMATE AREA.
- 6 MINIMUM FEED THROUGH CONDITION 1.0mm CLEARANCE ALL AROUND.
- 7 COMPANY LOGO SHOWN IN APPROXIMATE AREA.
- 8. NOTE DELETED

B	2138577-3
A	2138577-2
Z	2138577-1
KEY CODE	PART NUMBER

THIS DRAWING IS A CONTROLLED DOCUMENT.		DWN	R. SANTHOSH	19JAN2012	TE Connectivity 12 POSITION MQS HANDMATE SHIELD
DIMENSIONS:		CHK	M. GALEN	19JAN2012	
mm	0 PLC ±0.0	APVD	M. GALEN	19JAN2012	NAME
	1 PLC ±0.3	PRODUCT SPEC			SIZE CAGE CODE DRAWING NO RESTRICTED TO A100779C=2138577 Customer Drawing SCALE 5:1 SHEET 1 OF 1 REV B
	2 PLC ±0.10	APPLICATION SPEC			
	3 PLC ±0.0	WEIGHT			
	4 PLC ±0.0	FINISH			
MATERIAL		ANGLES ±0.0			