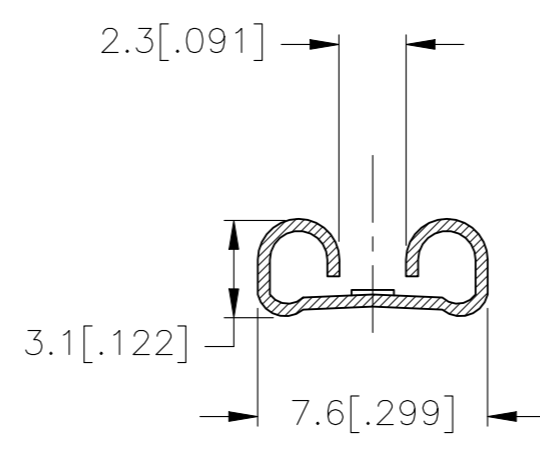
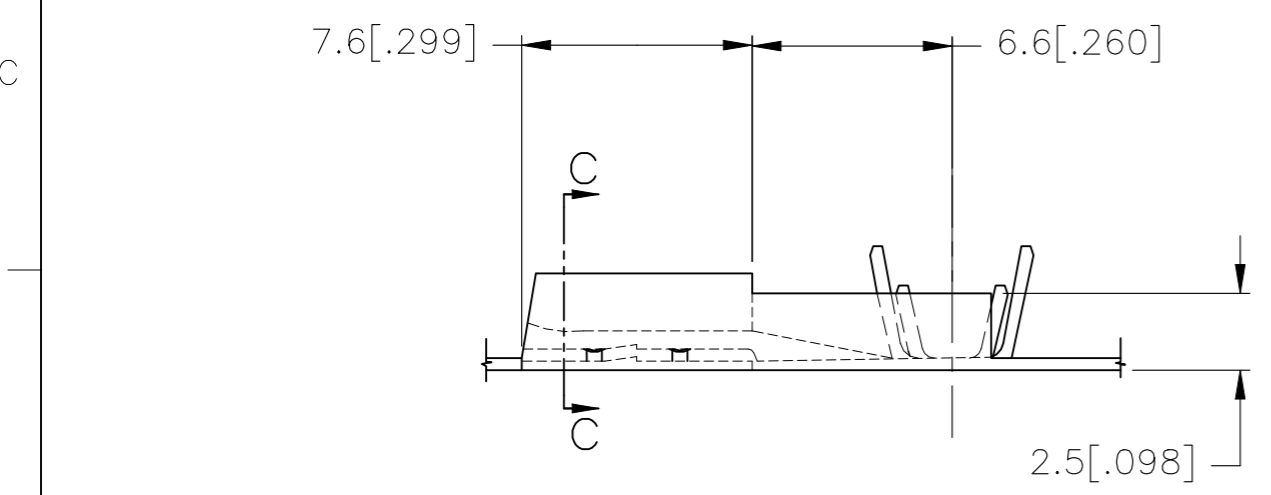
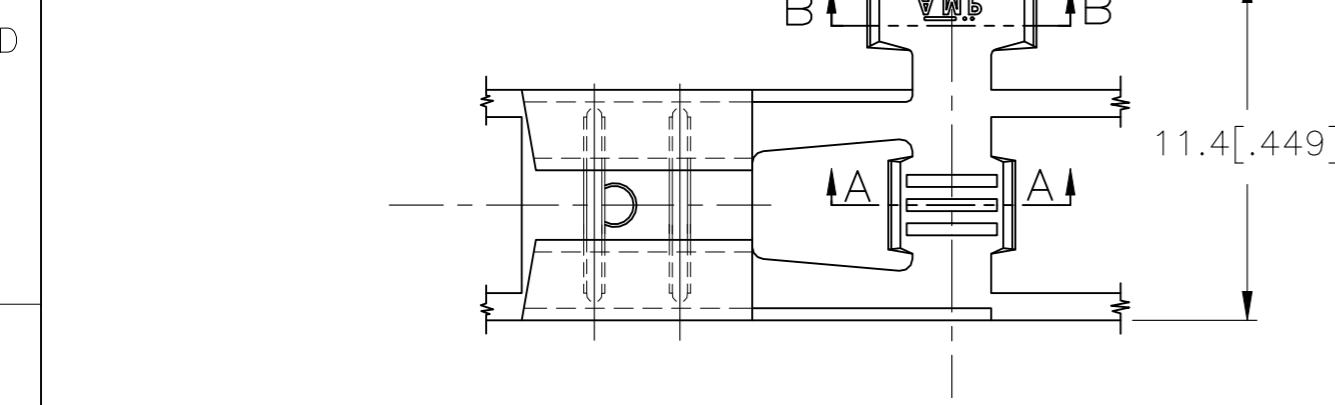
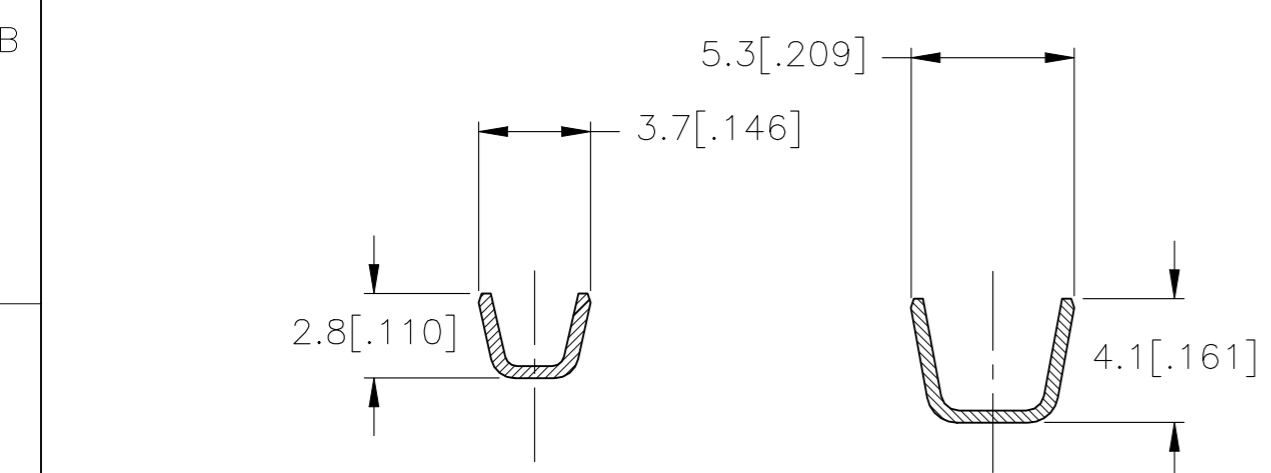


THIS DRAWING IS UNPUBLISHED. RELEASED FOR PUBLICATION
 © COPYRIGHT - By - ALL RIGHTS RESERVED.

P	LTR	DESCRIPTION	DATE	DWN	APVD
	A1	REVISED PER ECR-19-017980	09DEC2021	SS	EW



SECTION C-C



SECTION A-A

SECTION B-B

- 1 NON DISPONIBILE DALL' AMP ITALIA (NOT AVAILABLE FROM AMP ITALY).
- 2 ADATTO PER AMP-O-MATOR (REVERSE REELED FOR MINI APPLICATOR).
- 3 BOBINA IN CARTONE CON CARTA INTERPOSTA QUANTITA' PER BOBINA: 3000 (CARTON REEL WITH INTERPOSED PAPER STRIP Q.TY PER REEL: 3000).
- 4 CON SPECIALE RIVESTIMENTO IN CARTA (WITH SPECIAL PAPER COVER).
- 5 BOBINA IN CARTONE CON CARTA INTERPOSTA QUANTITA' PER BOBINA: 2500 (CARTON REEL WITH INTERPOSED PAPER STRIP Q.TY PER REEL: 2500).
- 6 OBSOLETE.
- 7 BOBINA IN CARTONE QUANTITA' PER BOBINA: 7000 (CARTON REEL Q.TY PER REEL: 7000).
- 8 OBSOLETE PARTS: OBSOLETE CIS STREAMLINING PER D.RENAUD/D.SINISI.

REVISION	DESCRIPTION	MATERIAL	FINITURA (FINISH)	NUMERO (P/N)
2	1	7	6	ST. (TIN PLTD) BR. F. (PH. BR.) 4-280050-7
2	1	7		- (UNPLTD) BR. F. (PH. BR.) 4-280050-4
2	1	7		ST. (TIN PLTD) OTTONE (BRASS) 4-280050-2
2	1	7		- (UNPLTD) OTTONE (BRASS) 4-280050-1
2	4			- (UNPLTD) BR. F. (PH. BR.) 2-280050-4
2	1	3		NICKELATO (NICKEL PLTD) ACCIAIO (STEEL) 2-280050-3
2	1	4	6	ST. (TIN PLTD) OTTONE (BRASS) 2-280050-2
2	1	4	3	- (UNPLTD) OTTONE (BRASS) 2-280050-1
2	1			NICKELATO (NICKEL PLTD) ACCIAIO (STEEL) 1-280050-3
2	5			ST. (TIN PLTD) OTTONE (BRASS) 1-280050-2
2	1			ST. (TIN PLTD) BR. F. (PH. BR.) 280050-7
2	1			- (UNPLTD) BR. F. (PH. BR.) 280050-4
2	1			NICKELATO (NICKEL PLTD) ACCIAIO (STEEL) 280050-3
2	1			ST. (TIN PLTD) OTTONE (BRASS) 280050-2
2	1			- (UNPLTD) OTTONE (BRASS) 280050-1
	NOTE		FINITURA (FINISH)	MATERIALE (MATERIAL) NUMERO (P/N)

DIAM. ISOLANTE (INS. DIA. RANGE) ø2.3-3.3	RANGO FILO (WIRE RANGE) 0.5-1.5mm ²
--	---

THIS DRAWING IS A CONTROLLED DOCUMENT.		DWN RAVI S 22NOV2016	TE Connectivity	
		CHK LI DAISY 22NOV2016		
DIMENSIONS: mm [INCHES] TOLERANCES UNLESS OTHERWISE SPECIFIED: 0 PLC ± - 1 PLC ± 0.3 [.011] 2 PLC ± 0.40 [.015] 3 PLC ± - 4 PLC ± - ANGLES ± 2°		APVD DING TIM 22NOV2016	NAME FASTON CONNECTOR .250 SR. FLAG REC. CONTACT	
MATERIAL SEE TABLE		FINISH SEE TABLE	PRODUCT SPEC	APPLICATION SPEC
		WEIGHT -	SIZE A3	CAGE CODE 00779
			DRAWING NO C-280050	RESTRICTED TO
CUSTOMER DRAWING		SCALE NTS	SHEET 1 OF 1	REV A1