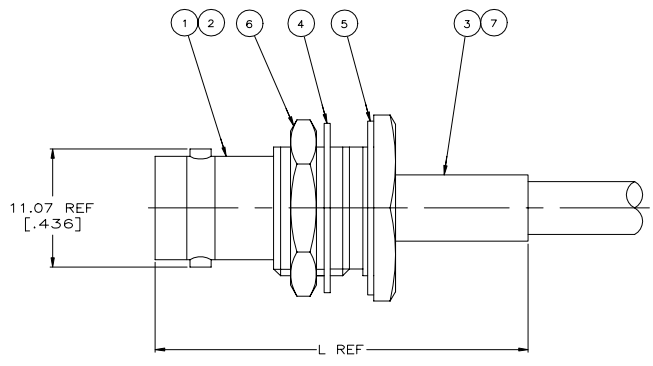
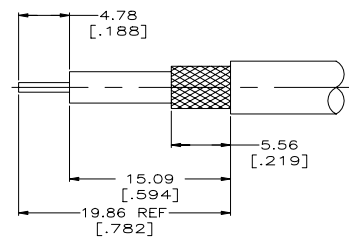


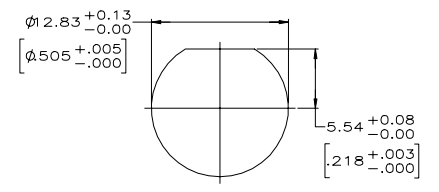
REVISIONS					
P	LR	DESCRIPTION	DATE	DRN	AWD
P1		REVISED PER ECR-22-146821	26JUL2022	RZ	WK



1. MAXIMUM PANEL THICKNESS = 6.10 [.240]
2. USE INSTRUCTION SHEET 408-1914-03



RECOMMENDED PANEL CUTOUT



RECOMMENDED PANEL CUTOUT

34.93	[1.375]	RD-316 DOUBLE BRAIDED	-	69477-2	21427-4	1-329631-2	1-329632-2	329633	9-329049-0	1-331368-2	1-331786-6	1-5225398-5
34.93	[1.375]	RG-179/U & 187/U CABLE	.557 OZ	220009-1	21427-4	1-329631-2	1-329632-2	329633	9-328666-0	1-331368-4	1-331786-6	5225398-8
34.93	[1.375]	RG-174/U & 188/U	.582 OZ	220009-1	21427-4	1-329631-2	1-329632-2	329633	9-328666-0	1-331368-2	1-331786-6	5225398-7
38.10	[1.500]	RG-142/U,142A/U & 142B/U	-	220189-3	-	1-329631-2	1-329632-2	329633	9-225382-0	1-331369-7	1-331786-4	5225398-6
38.10	[1.500]	RG55/U,55A/U,55B/U & 223/U	.568 OZ	69478-1	-	1-329631-2	1-329632-2	329633	9-225382-0	1-331369-6	1-331786-4	5225398-3
34.93	[1.375]	RG-58/U,58A/U,58B/U & 58C/U	.582 OZ	69478-1	-	1-329631-2	1-329632-2	329633	9-50427-1	1-331369-6	1-331786-4	5225398-1
L		CABLE	WEIGHT	CRIMP TOOL	⑦ BUSHING QTY=1	⑥ JAM NUT QTY=1	⑤ LOCK WASHER QTY=1	④ GASKET QTY=1	③ FERRULE QTY=1	② CONTACT QTY=1	① JACK ASSEMBLY QTY=1	PART NUMBER

THIS DRAWING IS A CONTROLLED DOCUMENT.

DRN: 31JAN2006  
 A. FERNANDEZ-DOCKES  
 DR: 31JAN2006

APPROVED: HAVENER  
 DATE: 31JAN2006

TE Connectivity

JACK, BULKHEAD, BNC

0 RLC  
 1 RLC  
 2 RLC  
 3 RLC  
 4 RLC

PRODUCT SPEC: 0.41 (014)

APPLICATION SPEC: -

WEIGHT: 0.000000

MATERIAL: -

FINISH: -

SIZE: A1  
 CASE CODE: 00779  
 DRAWING NO: 5225398

RESTRICTED TO: -

CUSTOMER DRAWING

SCALE: 4:1  
 SHEET: 1 OF 1  
 REV: P1