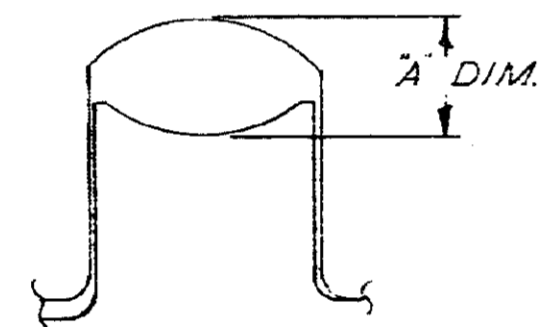
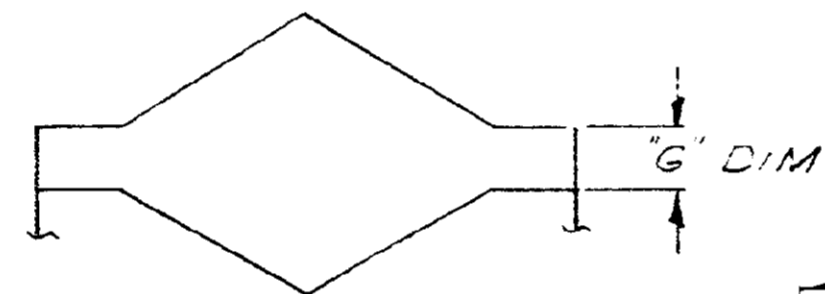


NOTE:
1. WHEN PLUG OR SLUG GAGING OF BARREL CRIMP IT IS IMPORTANT TO NOTE THAT DIMENSION A IS THE FIGURE REQUIRED.

PLUG GAGE DIMENSIONS APPLY WHEN TOOL IS BOTTOMED OUT BUT NOT UNDER PRESSURE.



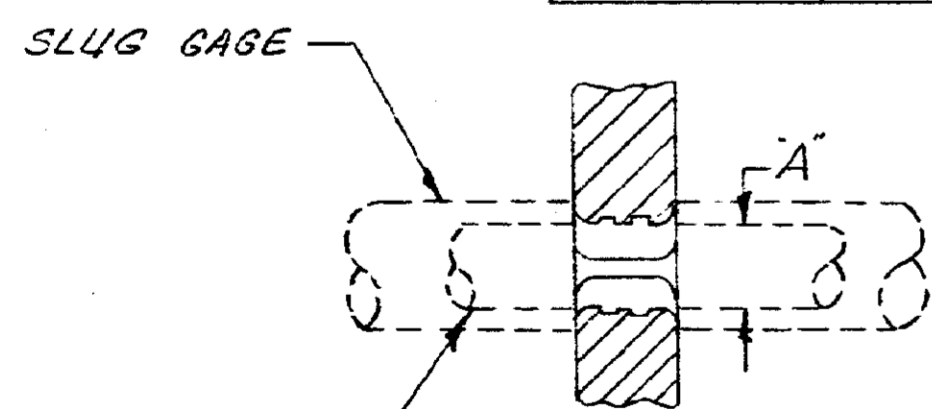
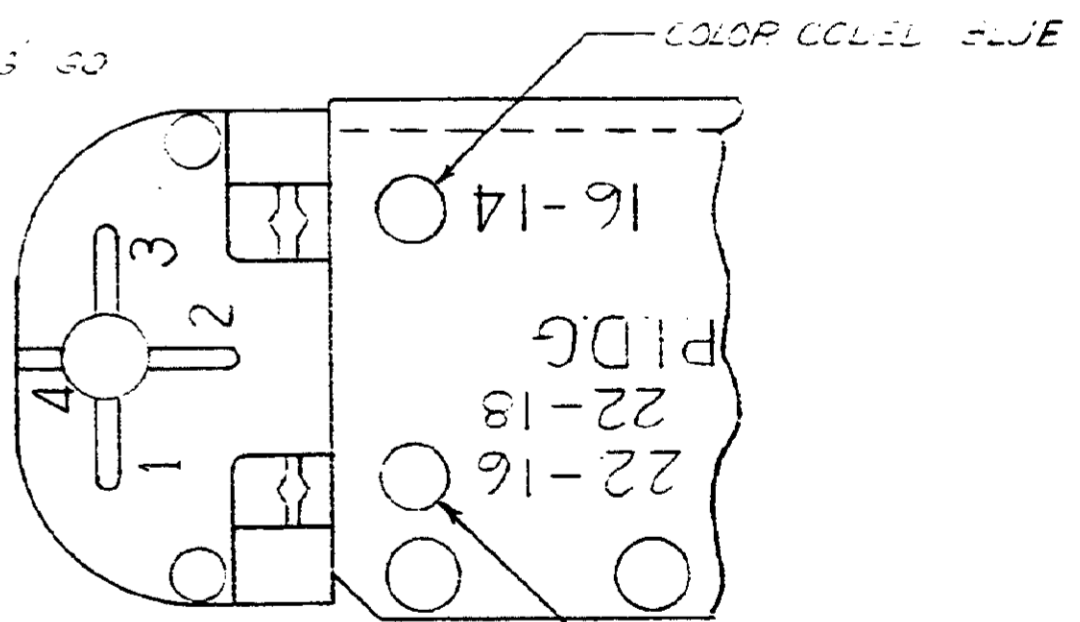
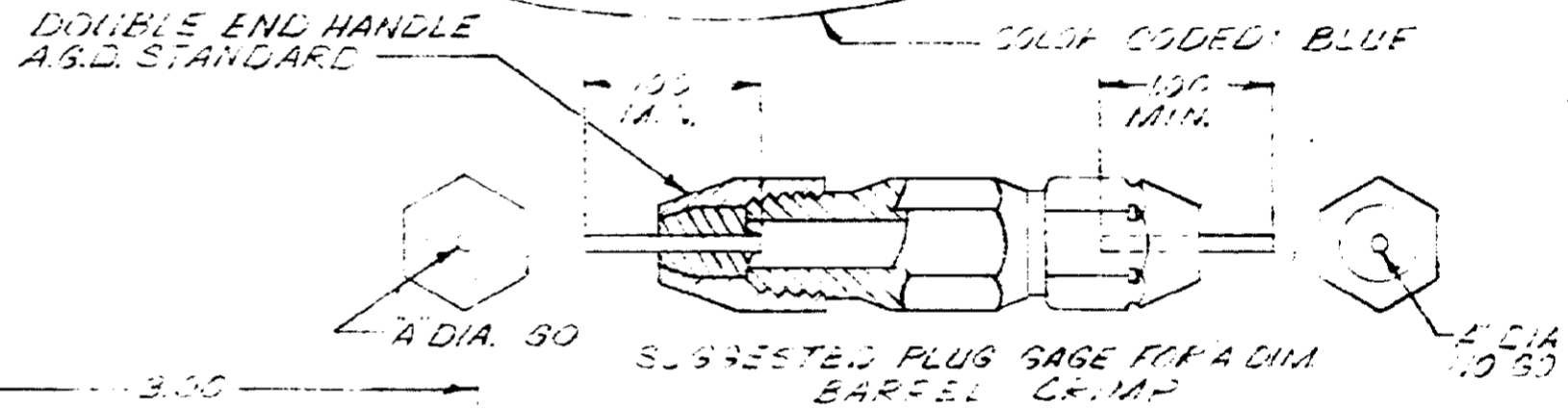
BARREL-CRIMP



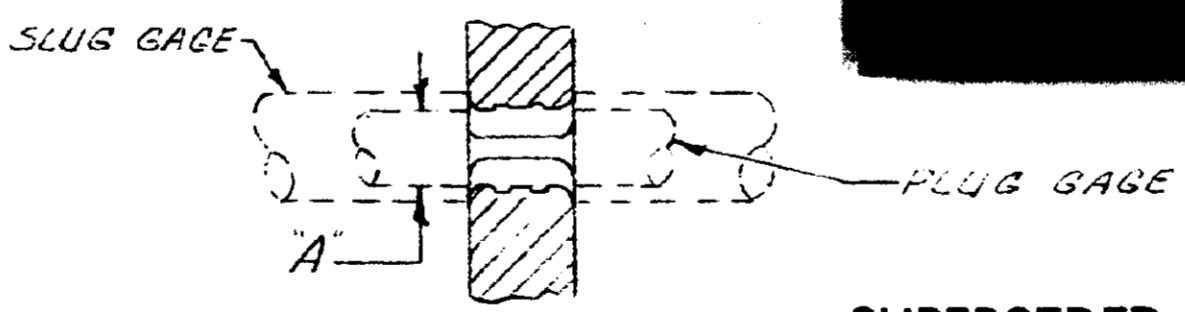
INSULATION-CRIMP

ENLARGED VIEW OF CRIMPS

WIRE SIZE GAGE	"A" DIA. BARREL CRIMP		"G" DIM. INSULATION CRIMP	
	GO	NO GO	GO PIN AT #1	NO GO PIN AT #4
22-16	.109	.115	.030	.110
16-14	.119	.125	.040	.120



BARREL INSERTS 16-14



BARREL INSERTS 22-16

SUPERSEDED BY 15.1610

REV.	DESCRIPTION	DATE
1	REVISED	
2	REVISED	
3	REVISED	

DWG NO. 59170	NUMBER	NAME	REMARKS
© 1955 BY AMP INCORPORATED. ALL RIGHTS RESERVED. AMP PRODUCTS COVERED BY PATENTS AND/OR PATENTS PENDING.			
DR. B. Skiffeld 12-29-66	MATERIAL AND FINISH		CUSTOMER COPY REFERENCE ONLY
CHK. 1-4-67	+		AMP INCORPORATED HARRISBURG, PENNA.
DR. J. H. H. H.	WIRE - RANGE - INSULATION		CLASS
	22-16-14		+
	TOLERANCE EXCEPT AS NOTED ± .005 ± .010		TYPE CONFINED CRESCENT P.I.D.G.
	SCALE #		LOC NO. 59170
	DATE 1-4-67		T HEAD ASSEMBLY

DIMENSIONS IN INCHES. DO NOT SCALE PRINT.