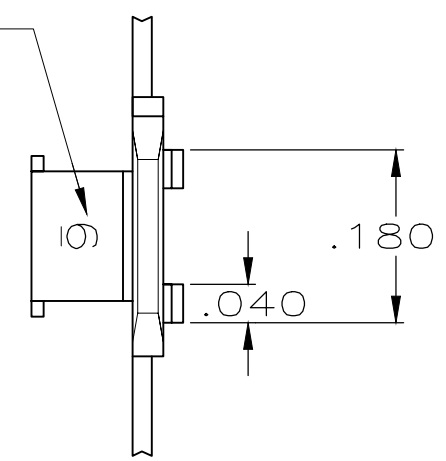


THIS DRAWING IS UNPUBLISHED. RELEASED FOR PUBLICATION
 © COPYRIGHT - By - TE CONNECTIVITY ALL RIGHTS RESERVED.

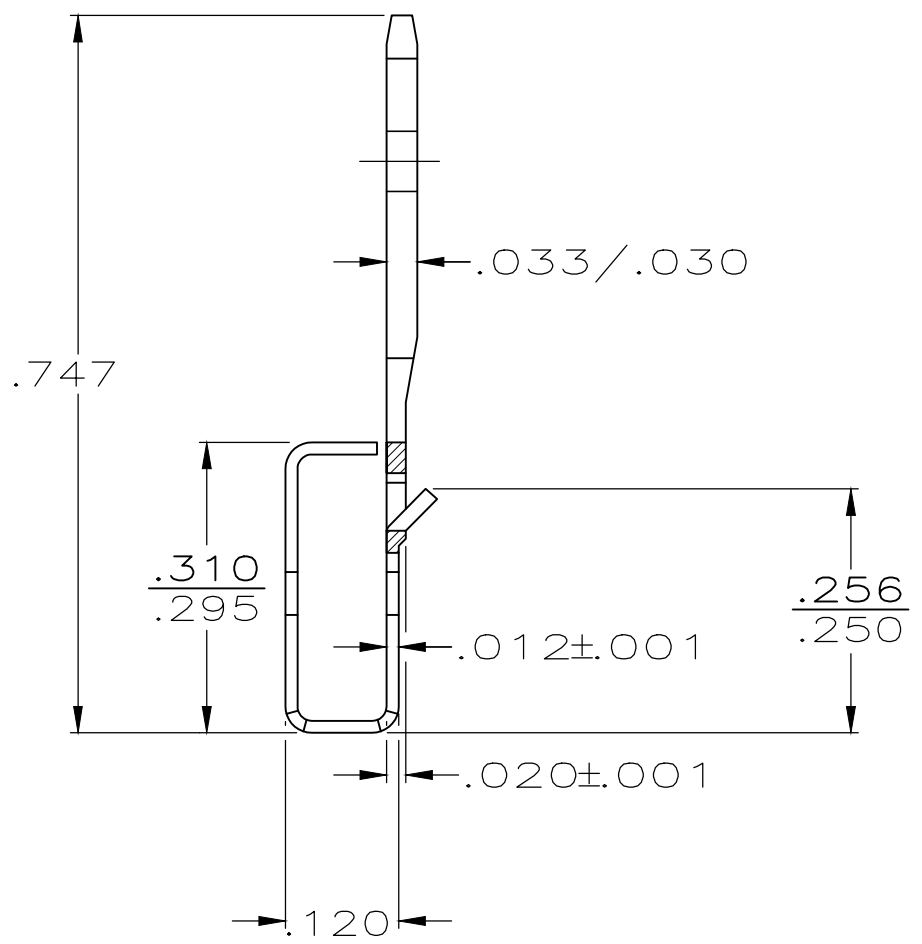
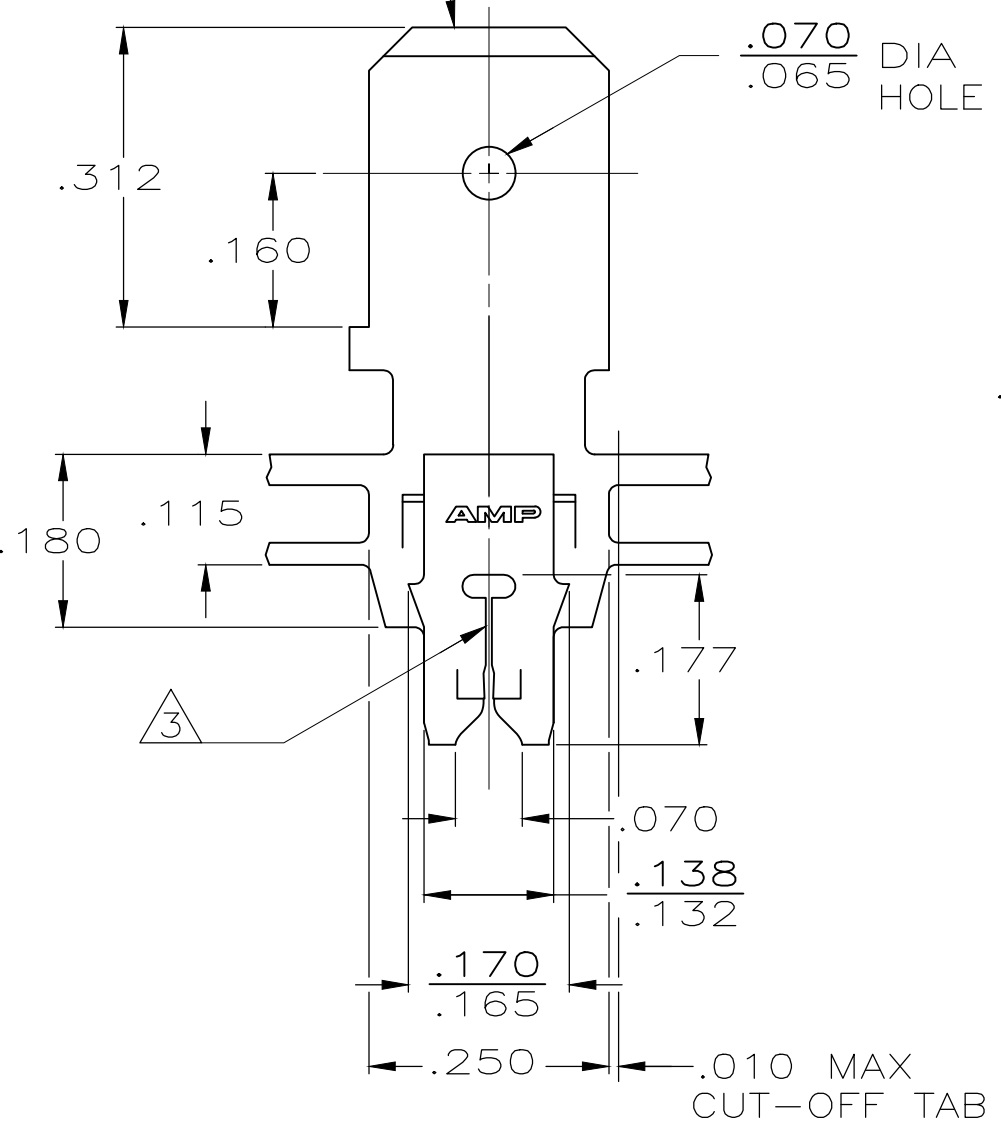
| REVISIONS | | | | |
|-----------|-----|---------------------------|-----------|------|
| P | LTR | DESCRIPTION | DATE | APVD |
| E3 | | REVISED PER ECR-19-014370 | 27SEP2019 | JA |

IDENTIFICATION NUMBER FOR MAGNET WIRE RANGE



- 1 MAG-MATE CAVITY SPECIFICATION.
- 2 CONTINUOUS STRIP ON REELS WITH TERMINALS LOCATED ON .330±.003 CENTERS.
- 3 SLOT TERMINATES EITHER SINGLE OR DOUBLE MAGNET WIRES OF THE SAME TYPE AND SIZE, COPPER WIRE RANGE IS 0.25-0.36mm[#30-#27] AWG. ALUMINIUM WIRE RANGE IS 0.32-0.45mm[#28-#25] AWG. ALUMINIUM WIRE RANGE APPLIES FOR POST TIN PLATED PARTS ONLY.

FITS .250 SERIES FASTON RECEPTACLE



| | |
|-----------|----------|
| 082 BRASS | 63499-2 |
| 4M BRASS | 63499-1 |
| MATERIAL | PART NO. |

| | | | | |
|--|--|-----------------------------|----------------------------|--------------------|
| THIS DRAWING IS A CONTROLLED DOCUMENT. | | DWN M.S FEHER 6/3/88 | STE TE Connectivity | |
| DIMENSIONS: INCHES | | CHK C G ATHERTON 7/7/88 | | |
| TOLERANCES UNLESS OTHERWISE SPECIFIED: | | APVD JR RUTH 7/7/88 | NAME | |
| 0 PLC ± - | | PRODUCT SPEC 108-2012 | TAB, 250 FASTON, MAG-MATE | |
| 1 PLC ± - | | APPLICATION SPEC 114-2094 1 | SIZE | RESTRICTED TO |
| 2 PLC ± - | | WEIGHT | A3 | - |
| 3 PLC ± .010 | | CUSTOMER DRAWING | CAGE CODE 00779 | DRAWING NO C-63499 |
| 4 PLC ± - | | SCALE 5:1 | SHEET 1 OF 1 | REV E3 |
| ANGLES ± - | | | | |
| FINISH TIN | | | | |
| MATERIAL SEE TABLE | | | | |