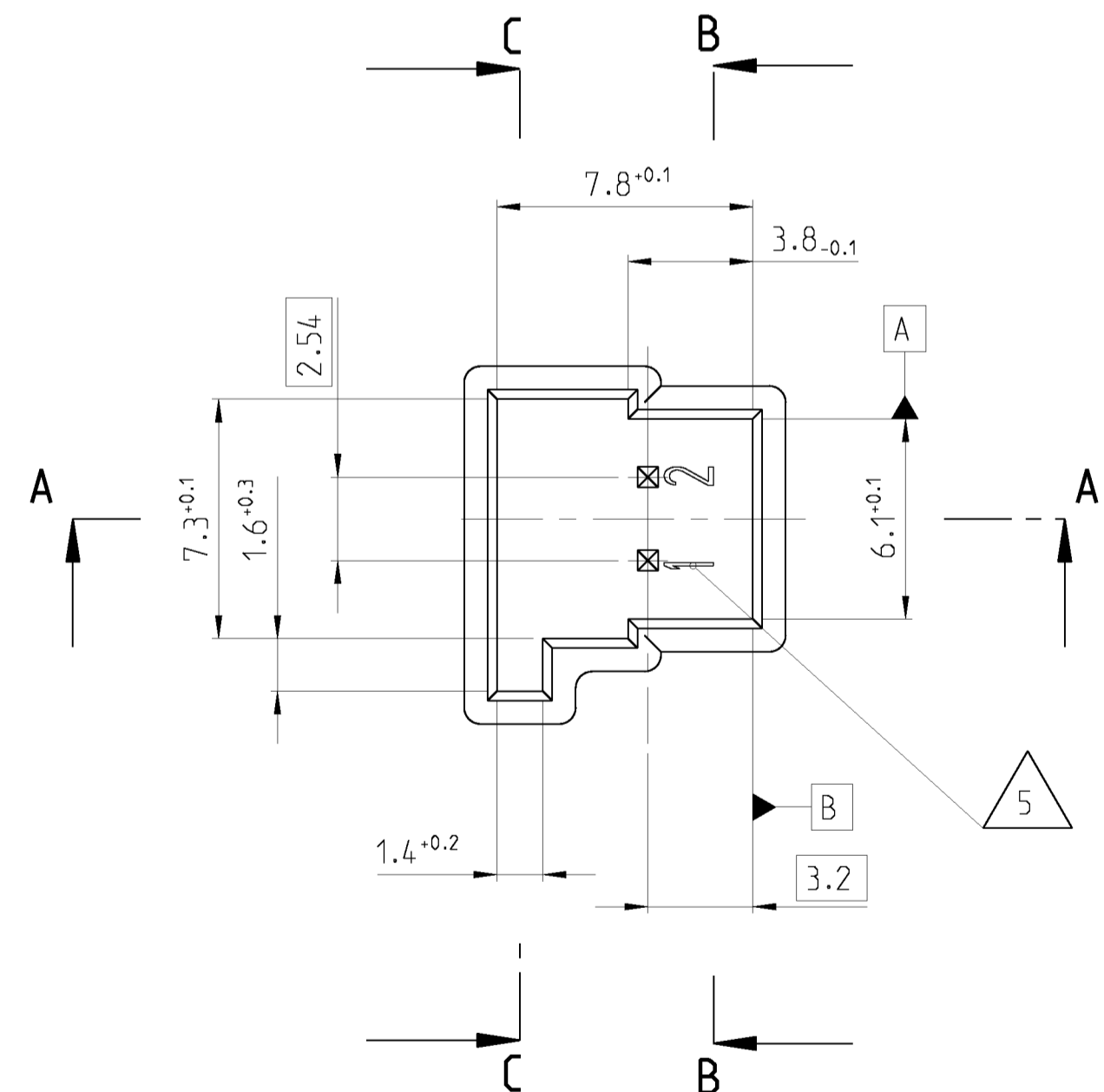
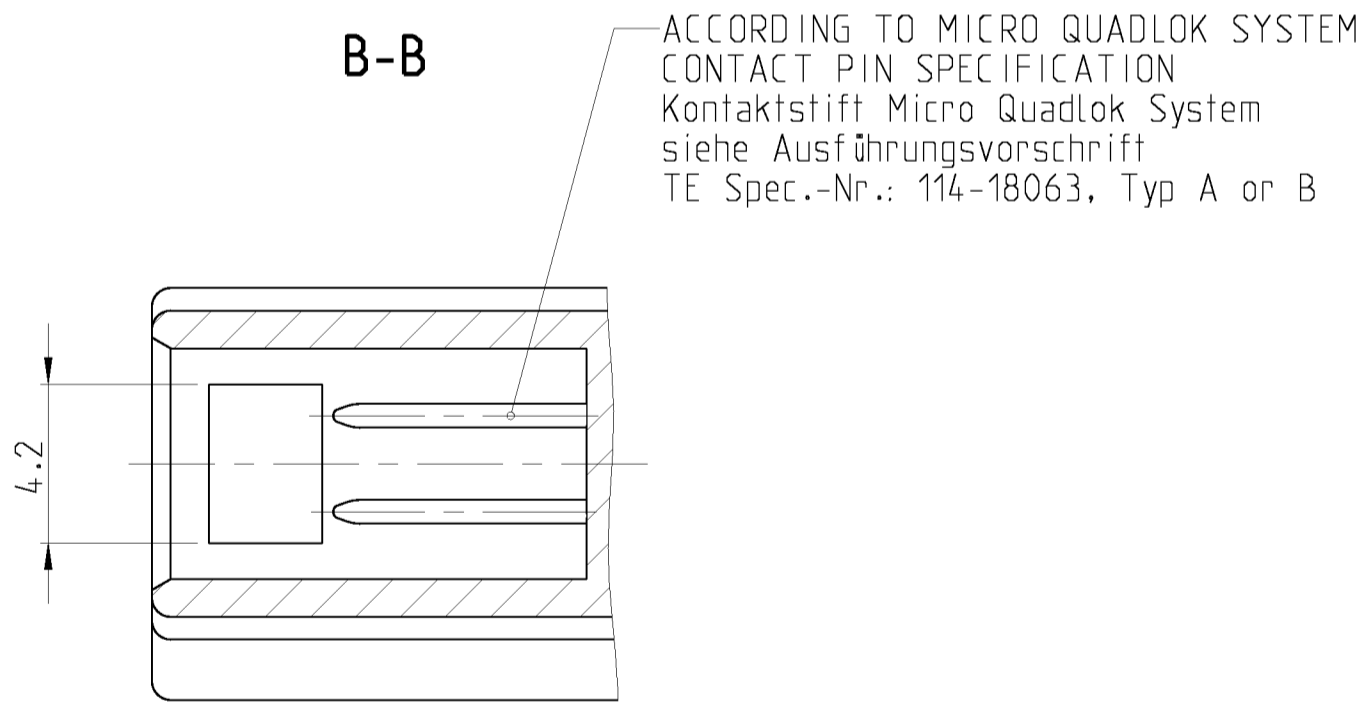
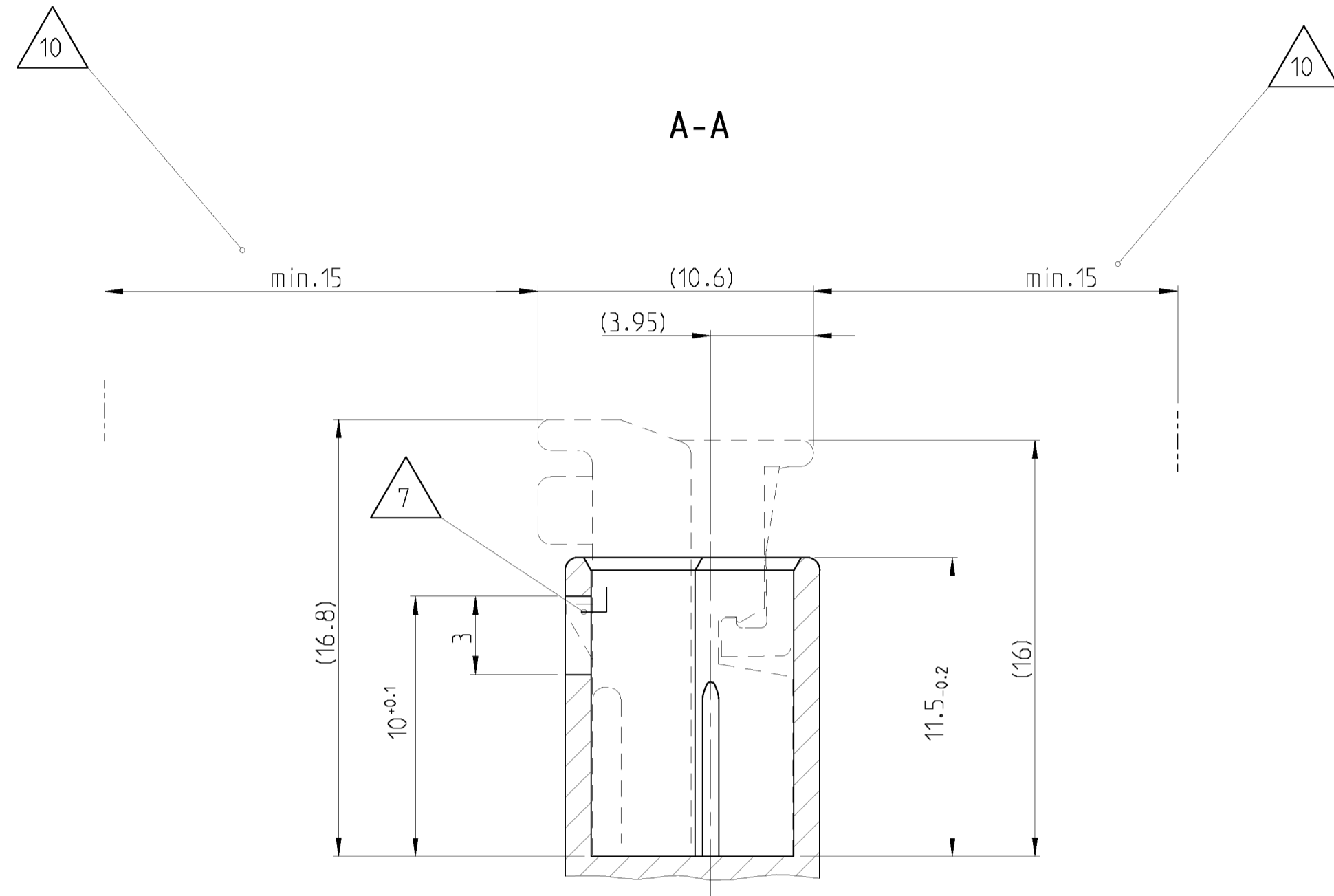
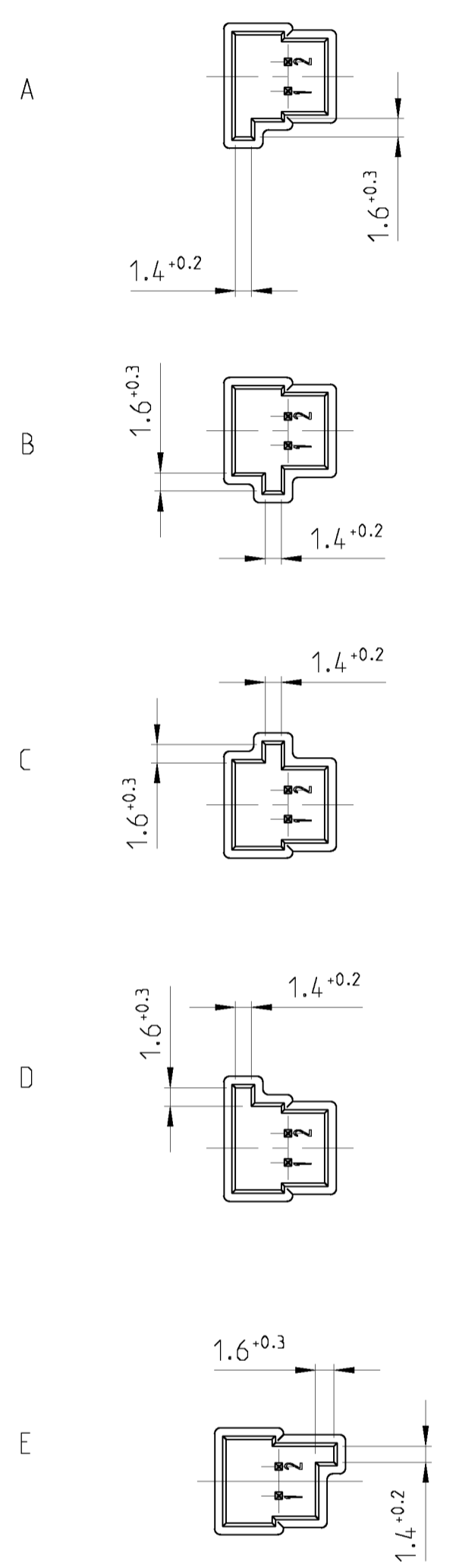


| LOC | DIST | REV | DATE | DWN | APVD |
|--------------|------|-------------|------|-----------|---------|
| A1 | - | P | LTR | | |
| PROJECT NR.: | A3 | new drawing | | 25JUN2010 | SBL HHC |

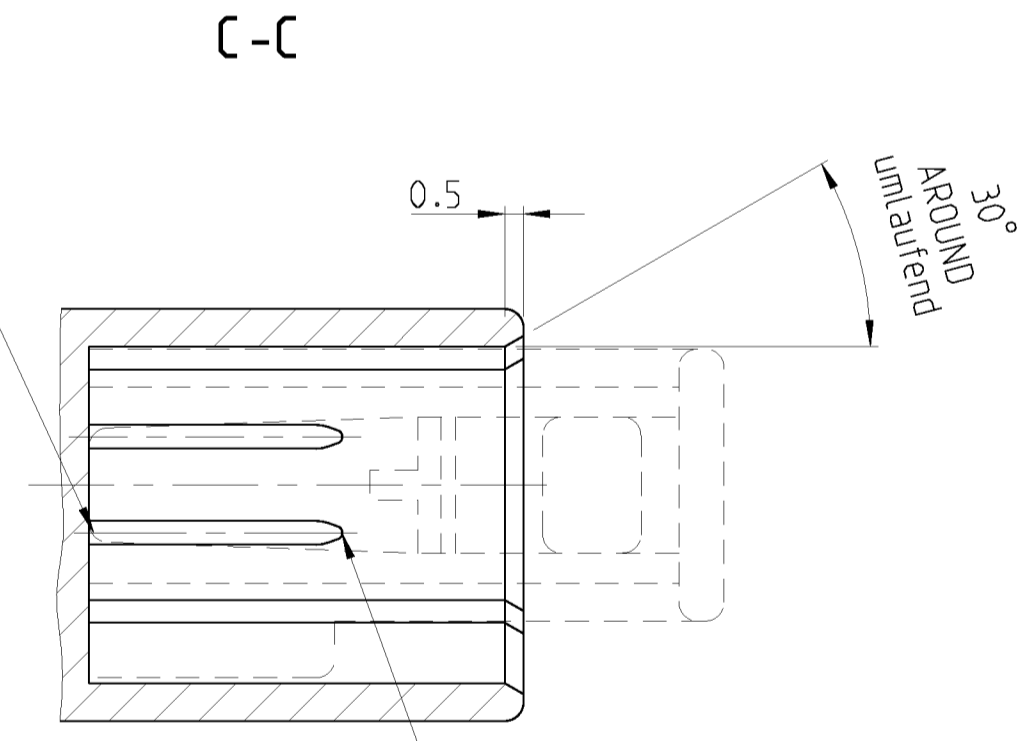
NOTES:
Bemerkungen

- ONLY THE GERMAN LANGUAGE VERSION IS AUTHORITY
Massgebend ist nur der deutsche Text
- CODING A AS SHOWN
Kodierung A wie gezeichnet
- POSITION TOLERANCE OF THE RELATION LAYER
A AND B MEASURED AT THE BOTTOM OF THE PIN HEADER
Positionstoleranz der Bezugsebene
A und B am Grund der Stiftwanne gemessen
- NO SPECIFIED RADII R0.5 mm
Unbemaste Radien R0.5 mm
- CAVITY MARKING, CHARACTERS DEEP
(CHARACTERS SIZE IS CHOICE OF THE MANUFACTURER)
Kammer Nummern, Schrift vertieft
(Schrifthoehe nach Wahl des Herstellers)
- DAMAGE ON TAB SURFACE NOT PERMITTED
Beschadigungen der Kontaktoberflaeche nicht zulaessig
- IN THIS AREA MAX. 0.03 MM BURR PERMITTED
in diesem Bereich max. 0.03mm Grat zulaessig
- THE USED MATERIAL HAS TO BE SELECTED IN SUCH A WAY THAT THE REQUIRED MECHANICAL AND ELECTRICAL CHARACTERISTICS ARE FULFILLED ACCORDING TO THE VALID DESIGN GUIDELINES AND SPECIFICATIONS.
Das verwendete Material ist so auszuwaehlen, dass die geforderten mechanischen und elektrischen Eigenschaften nach den gueltigen Konstruktionsrichtlinien und Spezifikation eingehalten werden.
- WALL THICKNESS AROUND MIN. 1 mm
Wandstaerken umlaufend min. 1 mm
- SPACE OF ACTIVITY MIN 15 mm
Betaetigungsfreiraum min. 15 mm
- MATED WITH CONNECTOR 929080
Passend zu Kupplung 929080

CODINGS
Kodierungen
2:1



2x
 $\varnothing 0.1$ A B
 PIN BOTTOM
 Stiftfuss



2x
 $\varnothing 0.3$ A B
 PIN TOP
 Stiftspitze

| TOLERANCES UNLESS OTHERWISE SPECIFIED ACC. TO DIN 16901-140 CENTRIC TO NOMINAL DIMENSION. EDITION 1982-11. SHALL APPLY. Freimasstoleranzen nach DIN 16901-140. Es gilt die Ausgabe 1982-11. | | DWN S. Blidar 25JUN2010 | | Tyco Electronics AMP GmbH 64625 Bensheim (Germany) | |
|--|--|--|--|---|--|
| DIMENSIONS: MASSMEIßEN: (mm) | | OTHERWISE SPECIFIED: ALLGEMEINTOLERANZEN | | NAME: INTERFACE DRAWING, 2POS. MQS Ausfuhrungsvorschrift 2pol. MQS | |
| 0 PLC ± | | PRODUCT SPEC | | SIZE: A1 | |
| 1 PLC ± | | PRODUCT SPEC | | CAGE CODE: 00779 | |
| 2 PLC ± | | APPLICATION SPEC | | DRAWING NO: 114-18063-60 | |
| 3 PLC ± | | APPLICATION SPEC | | RESTRICTED TO: NUR FÜR | |
| 4 PLC ± | | APPLICATION SPEC | | CUSTOMER DRAWING | |
| ANGLES/WINKEL: 10° | | WEIGHT: - | | SCALE: 5:1 | |
| FINISH/BEARBEITUNG: - | | CUSTOMER DRAWING | | SHEET 1 OF 1 | |
| | | | | REV: A3 | |