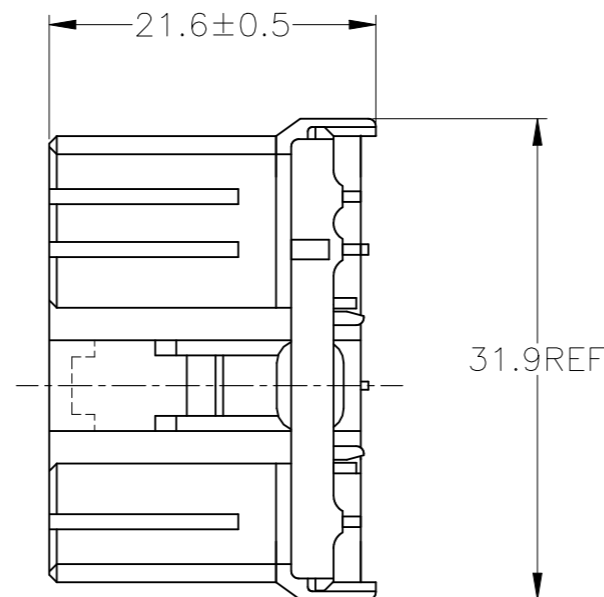
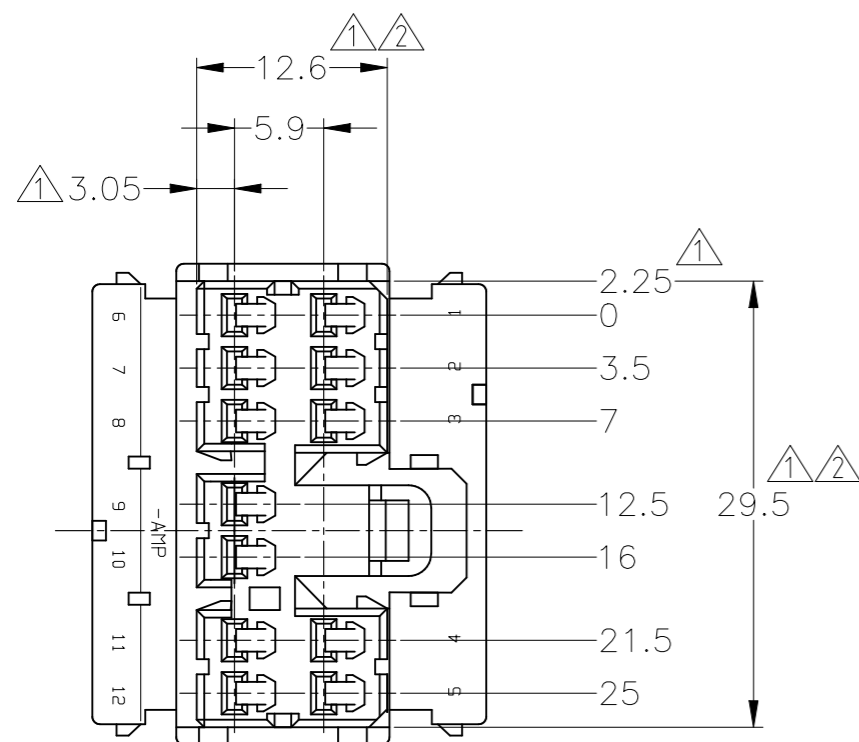
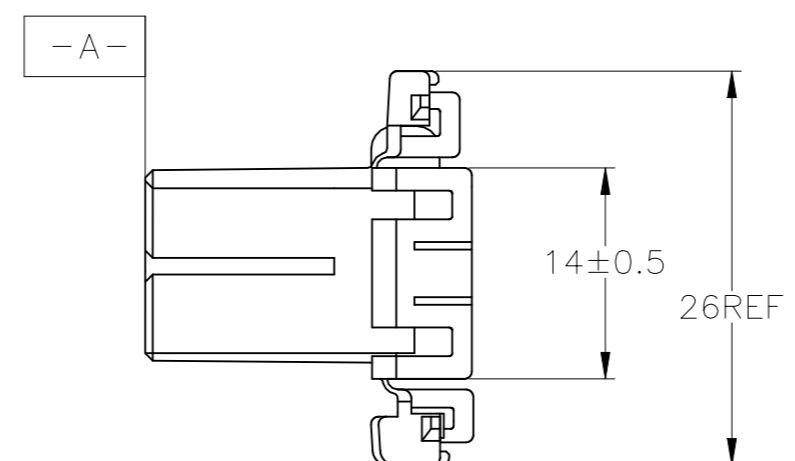


| REVISIONS 変更 | | | | | |
|-----------------|-----|---------------------------|-----------|-----|------|
| P | LTR | DESCRIPTION | DATE | DWN | APVD |
| | E2 | REVISED PER ECR-22-153250 | 21OCT2022 | RK | MT |



△ MUST BE KEPT BETWEEN [-A-] AND 2
 △ TO BE MATED WITH THE CAP HOUSING SMOOTHLY
 3. APPLIED CONTACT PART NUMBER; 173630 AND 173631

△ [-A-] 面より2mmの範囲で測定
 △ 相手ハウジングと所定の機能を満足して嵌合できること
 3. 内装するリセプタクルコンタクト型番173630 及び 173631



| | | | |
|---------------------------------------|---------------|---------------|------------------|
| OBSOLETE | V-2 | 自然色 (NATURAL) | 1-173851-1 |
| | HB | オレンジ (ORANGE) | 173851-8 |
| | | 灰 (GRAY) | 173851-6 |
| | | 青 (BLUE) | 173851-5 |
| | | 緑 (GREEN) | 173851-4 |
| | | 黒 (BLACK) | 173851-2 |
| 使用材料難燃グレード (FLAMMABILITY OF MATERIAL) | 自然色 (NATURAL) | 173851-1 | 型番 (PART NUMBER) |

THIS DRAWING IS A CONTROLLED DOCUMENT.

| | | | | | |
|---------------------------------------|---|-----------|------------------|-----------------|-----------|
| DWN T.SHINOHARA 13DEC2012 | TE Connectivity 070 SERIES MULTI-LOCK CONNECTOR 12POSITION PLUG HOUSING | | | | |
| CHK K.BETSUI 13DEC2012 | | | | | |
| APVD K.BUTSUI 13DEC2012 | | | | | |
| NAME 名称 | | | | | |
| PRODUCT SPEC 製品規格 108-5216,5264 | SIZE | CAGE CODE | DRAWING NO 番号 | RESTRICTED TO | |
| APPLICATION SPEC 取付適用規格 | A3 | 00779 | C-173851 | - | |
| WEIGHT - | CUSTOMER DRAWING | | SCALE 尺度 2:1 | SHEET 1 OF 1 | REV E2 |

TOLERANCES UNLESS OTHERWISE SPECIFIED:
一般公差

| | |
|------------------|--------------|
| 10 _± | : ±0.2 |
| 30 _± | > 10 : ±0.25 |
| 100 _± | > 30 : ±0.3 |
| ANGLE | : ±3° |

DIMENSIONS:
単位: 耗
mm

TOLERANCES UNLESS OTHERWISE SPECIFIED:
一般公差

| | |
|--------|-----|
| 0 PLC | ± - |
| 1 PLC | ± - |
| 2 PLC | ± - |
| 3 PLC | ± - |
| 4 PLC | ± - |
| ANGLES | ± - |

MATERIAL
材料 PBT

FINISH
仕上 -