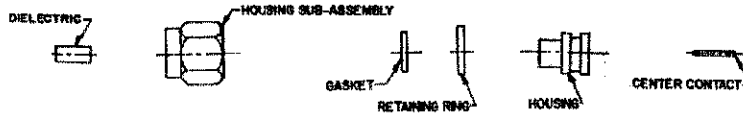


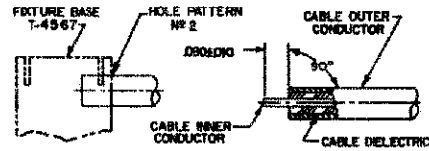
CONNECTOR TYPE	CABLE TYPE	TOOLS REQUIRED:
OSM STRAIGHT CABLE PLUG DIRECT SOLDER ATTACHMENT	.085 SEMI-RIGID COAXIAL CABLE	FIXTURE BASE:2098-5206-54(T-4567) CLAMP INSERT:2098-5208-54(T-4700-2) CENTER CONTACT HOLDER:2098-5221-10(T-4578) SOLDER GAUGE:2098-5516-02(T-4662-5) LOCATOR TOOL:2098-0307-02 DIELECTRIC INSERT TOOL:2098-0295-02 RETAINING RING PLIERS:2098-5216-54(T-5702)

CONNECTOR

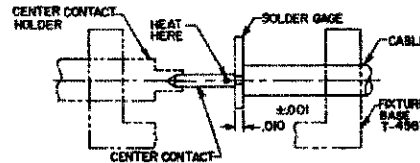


ASSEMBLY OPERATIONS

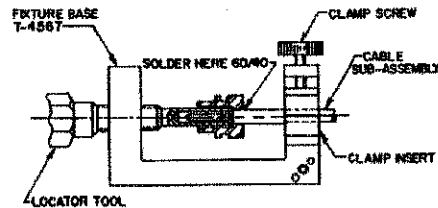
- 1.0 PREPARATION OF CABLE
 - 1.1 INSERT SQUARED CABLE END INTO FIXTURE BASE HOLE PATTERN #2.
 - 1.2 PLACE SAW IN SAW SLOT AND CUT THROUGH OUTER CONDUCTOR AND INTO DIELECTRIC WHILE ROTATING CABLE.
 - 1.3 REMOVE CABLE FROM FIXTURE AND FINISH CUTTING DIELECTRIC WITH CUTTING BLADE.
 - 1.4 BARE INNER CONDUCTOR BY PRYING CUT OUTER CONDUCTOR AND DIELECTRIC FROM CABLE.
 - 1.5 COMPLETE TRIMMING OF CABLE INNER CONDUCTOR TO DIMENSION SHOWN.



- 2.0 SOLDERING OF CENTER CONTACT TO CABLE INNER CONDUCTOR
 - 2.1 TIN INNER CONDUCTOR OF CABLE.
 - 2.2 PLACE SOLDER GAUGE ON INNER CONDUCTOR, FLUSH WITH END OF OUTER CONDUCTOR.
 - 2.3 PLACE CENTER CONTACT IN HOLDER, HEAT CENTER CONTACT AND PUSH IT OVER INNER CONDUCTOR OF CABLE TO REST FIRMLY AGAINST SOLDER GAUGE.
 - 2.4 REMOVE SOLDER GAUGE AND EXCESS SOLDER.



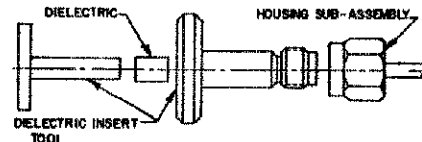
- 3.0 SOLDERING OF CABLE TO HOUSING
 - 3.1 PLACE CONNECTOR HOUSING ON END OF CABLE SUB-ASSEMBLY.
 - 3.2 PLACE LOOSE ASSEMBLY IN FIXTURE BASE AS SHOWN.
 - 3.2.1 NEST CENTER CONTACT IN LOCATOR TOOL.
 - 3.2.2 TIGHTEN CLAMP SCREW TO SECURE CABLE.
 - 3.2.3 TIGHTEN LOCATOR TOOL TO SEAT CABLE FIRMLY.
 - 3.3 SLIDE HOUSING OVER LOCATOR TOOL.
 - 3.4 MAINTAIN POSITION OF HOUSING FIRMLY AGAINST LOCATOR TOOL AND SOLDER.
- NOTE: FIXTURE SHOULD BE CLAMPED VERTICALLY IN VISE TO KEEP HOUSING SEATED AGAINST LOCATOR TOOL.



- 4.0 SECURE COUPLING NUT TO HOUSING
 - 4.1 PLACE RETAINING RING AND GASKET ON HOUSING COMPRESS RETAINING RING WITH RETAINING RING PLIERS.
 - 4.3 PUSH COUPLING NUT ONTO HOUSING AND RETAINING RING.
 - 4.4 COUPLING NUT SHOULD ROTATE FREELY.



- 5.0 PRESSING OF DIELECTRIC BUSHING INTO HOUSING SUB-ASSEMBLY
 - 5.1 THREAD INSERT TOOL INTO HOUSING SUB-ASSEMBLY.
 - 5.2 INSERT DIELECTRIC INTO INSERT TOOL HOUSING.
 - 5.3 PLACE INSERT TOOL PLUNGER INTO POSITION AND PRESS UNTIL FLANGE BOTTOMS ON TOOL HOUSING.
 - 5.4 ASSEMBLY IS NOW COMPLETE.



- 6.0 INSPECTION OF COMPLETED CONNECTOR ASSEMBLY.
 - 6.1 ADHERENCE TO STEPS GIVEN WILL YIELD TOLERANCES SHOWN.

