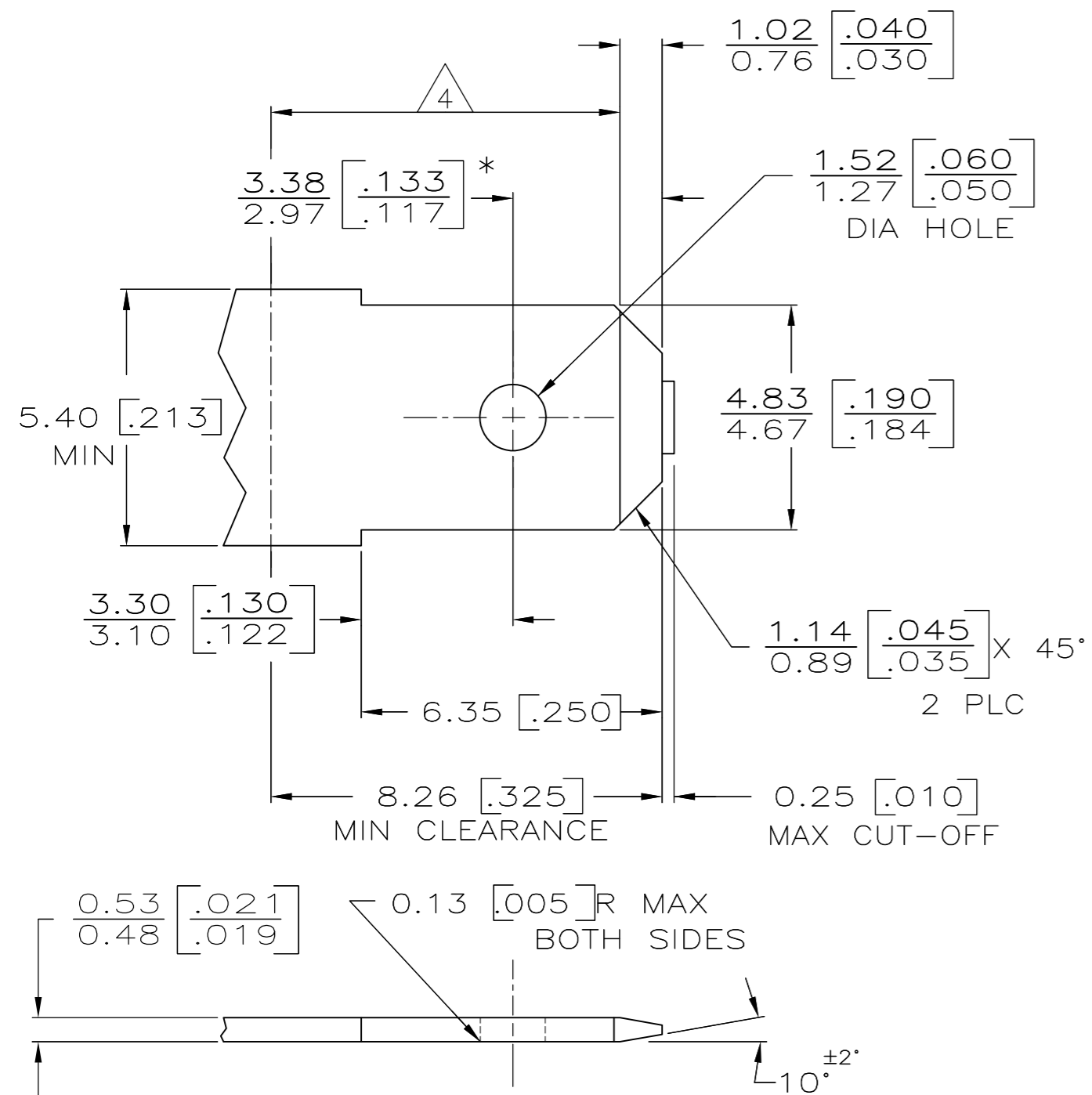


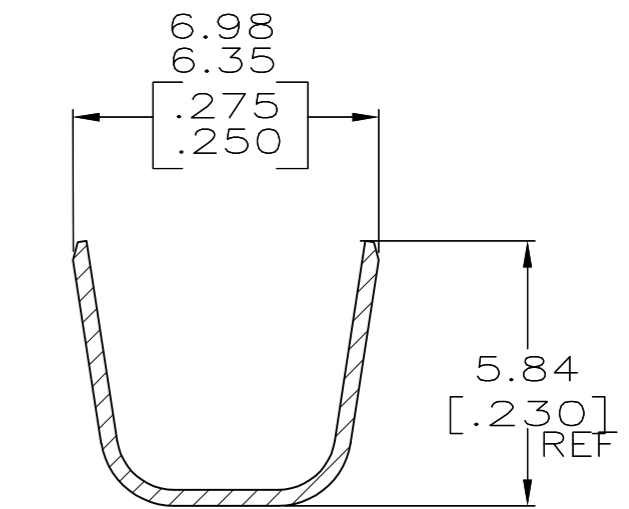
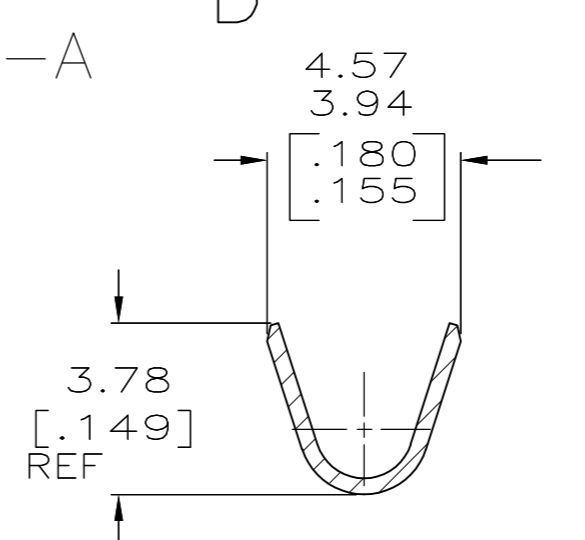
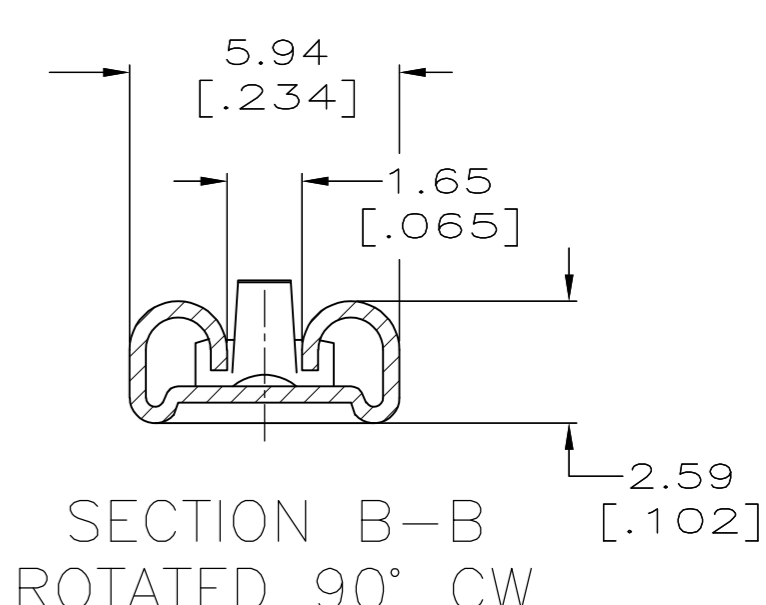
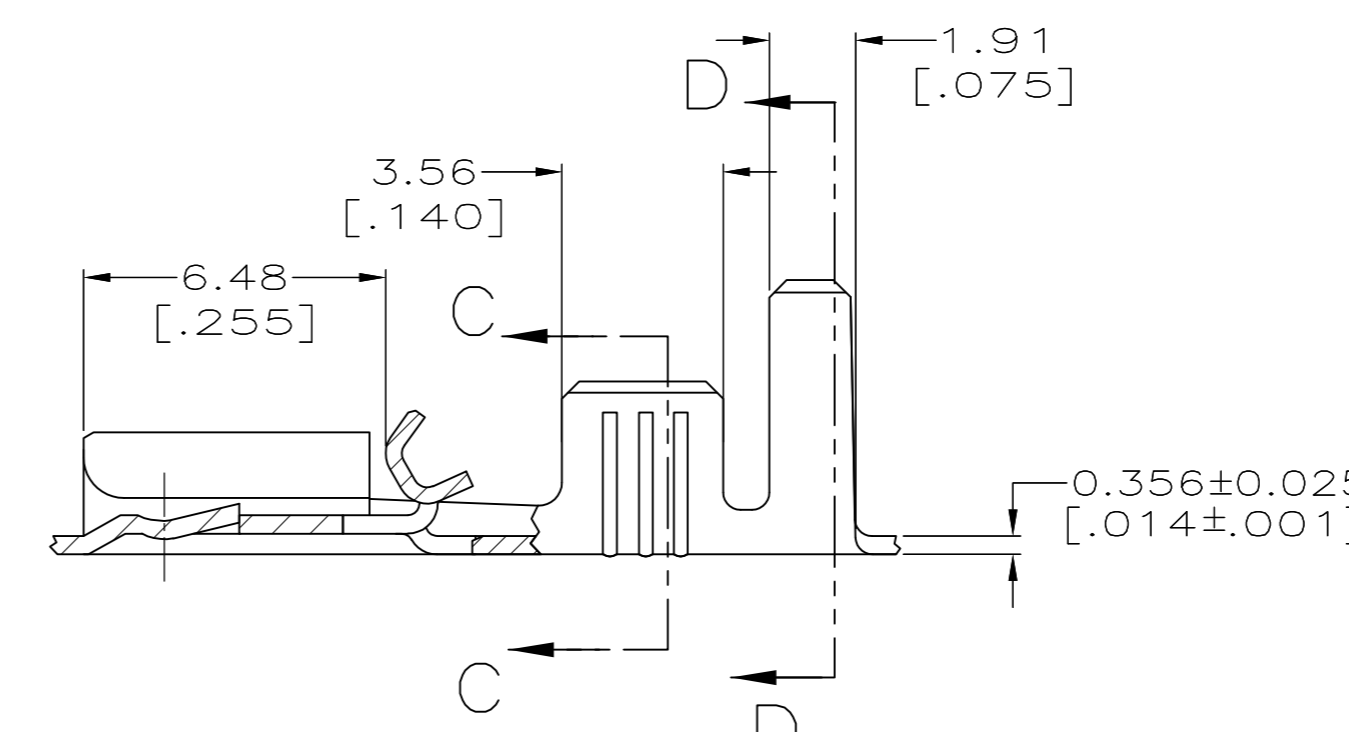
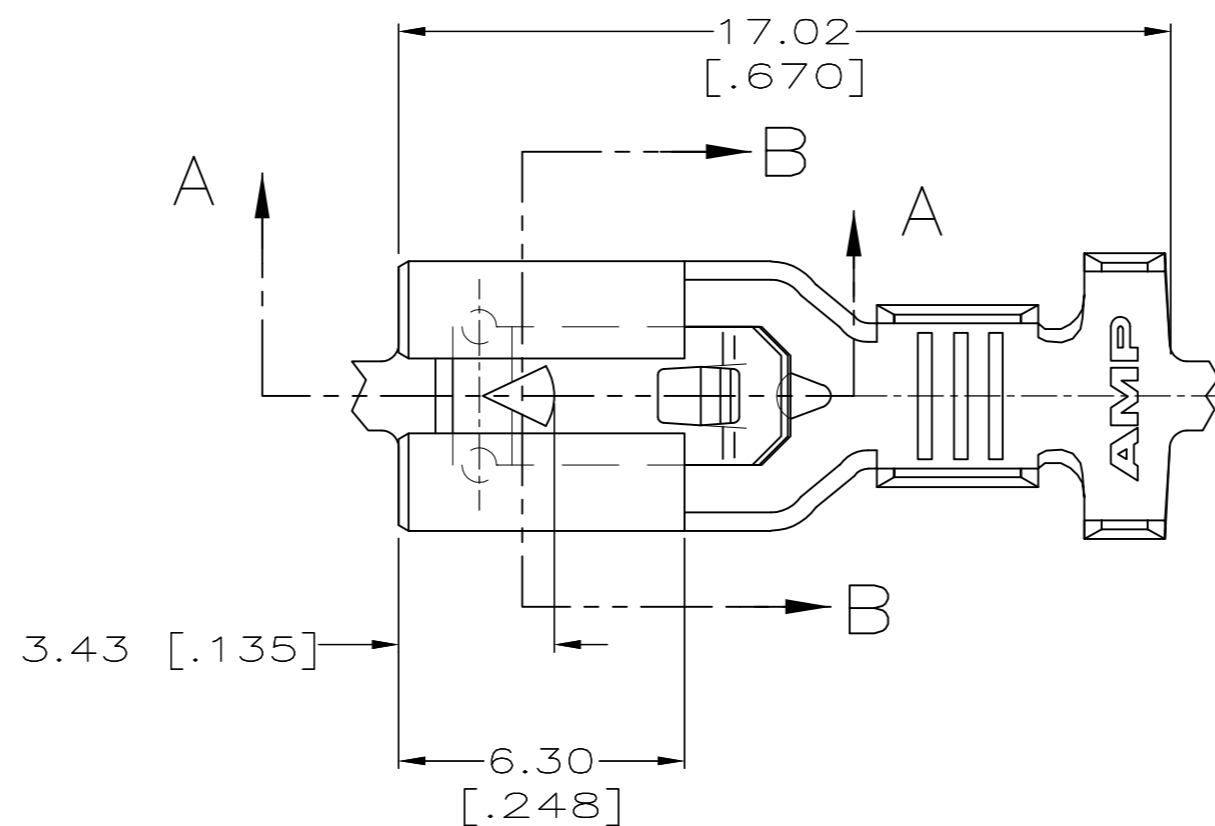
THIS DRAWING IS UNPUBLISHED. RELEASED FOR PUBLICATION
 © COPYRIGHT - By - ALL RIGHTS RESERVED.

LOC		DIST		REVISIONS			
P	LTR	DESCRIPTION		DATE	DWN	APVD	
AF	50	D		REVISED PER ECR-13-011489	14DEC2013	KH	PD

SUGGESTED MATING TAB



- MATL: #2 HARD BRASS OR NICKEL PLATE STEEL.
 - NO BURRS PERMISSIBLE AT HOLE.
 - TIN PLATING IS REQUIRED ON BRASS WHEN TERMINAL TEMPERATURE IS OVER 225° F.
 - MUST BE FLAT WITHIN 0.076[.003] OVER THIS LENGTH.
 - HOLE MUST BE SYMMETRICAL ABOUT TAB & WITHIN 0.076[.003].
- * TO BE USED ONLY WHEN SHOULDER IS ELIMINATED.



- CONTINUOUS STRIP ON REELS.
- ACCEPTS [#18-#14] SINGLE WIRE SIZES AND COMBINATION OF TWO [#18'S]. WIRE CRIMP IS 3.05 [.120], F TYPE.
- FITS INSULATION RANGE OF 3.81-5.08 [.150-.200] DIA OR TWO WIRES AT 2.79 [.110] MAX DIA. INSULATION CRIMP IS 5.59 [.220], F TYPE.

0.002032 [.000080] MIN TIN	1217114-2
-	1217114-1
FINISH	PART NO.

THIS DRAWING IS A CONTROLLED DOCUMENT.		DWN	JR RUTH	9/17/98	 TE Connectivity																	
DIMENSIONS: mm [INCHES]		CHK	MS FEHER	9/17/98																		
TOLERANCES UNLESS OTHERWISE SPECIFIED:		APVD	E HOWARD	9/17/98																		
<table border="1"> <tr><td>0 PLC</td><td>±</td><td>-</td></tr> <tr><td>1 PLC</td><td>±</td><td>-</td></tr> <tr><td>2 PLC</td><td>±</td><td>0.25 [.010]</td></tr> <tr><td>3 PLC</td><td>±</td><td>-</td></tr> <tr><td>4 PLC</td><td>±</td><td>-</td></tr> <tr><td>ANGLES</td><td>±</td><td>-</td></tr> </table>		0 PLC	±	-		1 PLC	±	-	2 PLC	±	0.25 [.010]	3 PLC	±	-	4 PLC	±	-	ANGLES	±	-	PRODUCT SPEC	-
0 PLC	±	-																				
1 PLC	±	-																				
2 PLC	±	0.25 [.010]																				
3 PLC	±	-																				
4 PLC	±	-																				
ANGLES	±	-																				
MATERIAL	BRASS	FINISH	SEE TABLE	WEIGHT	-																	
CUSTOMER DRAWING		SCALE	6:1	SHEET	1 OF 1																	
SIZE		A2	CAGE CODE	00779	DRAWING NO.	1217114																
RESTRICTED TO		-																				