


THIS DRAWING IS UNPUBLISHED. RELEASED FOR PUBLICATION. ALL RIGHTS RESERVED.

REVISIONS					
REV	DATE	DESCRIPTION	BY	CHK	APPD
U	7-23-18	REV PER ECO 18-011575		CT	RL

- CONNECTOR DIMENSIONS ARE PER ARINC 600 SPECIFICATION.
 - CONNECTOR IS SUPPLIED WITH CONTACTS (PER TABLE) ASSEMBLED AS SHOWN.
 - KEYING SHOWN IN POSITION "01" FOR ILLUSTRATION ONLY. CONNECTORS SHIPPED WITH KEYING INSTALLED IN POSITION PER TABLE. FOR POSITION "00" KEYING HARDWARE SHIPPED UNASSEMBLED.
- WITH CONTACT FULLY SEATED TO REAR OF CAVITY.
- ⚠ FOR 1218049-3 CUSTOMER P/N 2232591-4 REV D, AND DATE CODE MARKED ON CONNECTOR BODY.
 - ⚠ FOR 1218049-4 CUSTOMER CAGE CODE, CUSTOMER PART NO. AND CUSTOMER REV LEVEL AND TE CAGE CODE MARKED AS SHOWN BELOW:
98571-2234352-1 REV (LETTER OR NUMBER)
MFR 00779
 - ⚠ FOR 1218049-4 TE PART NO. AND DATE CODE MARKED IN THIS AREA.
 - ⚠ CLINCH NUT SHALL MEET THE REQUIREMENTS OF NASM45938/7-4.

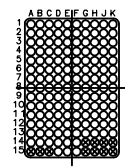
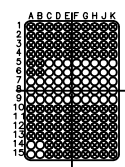
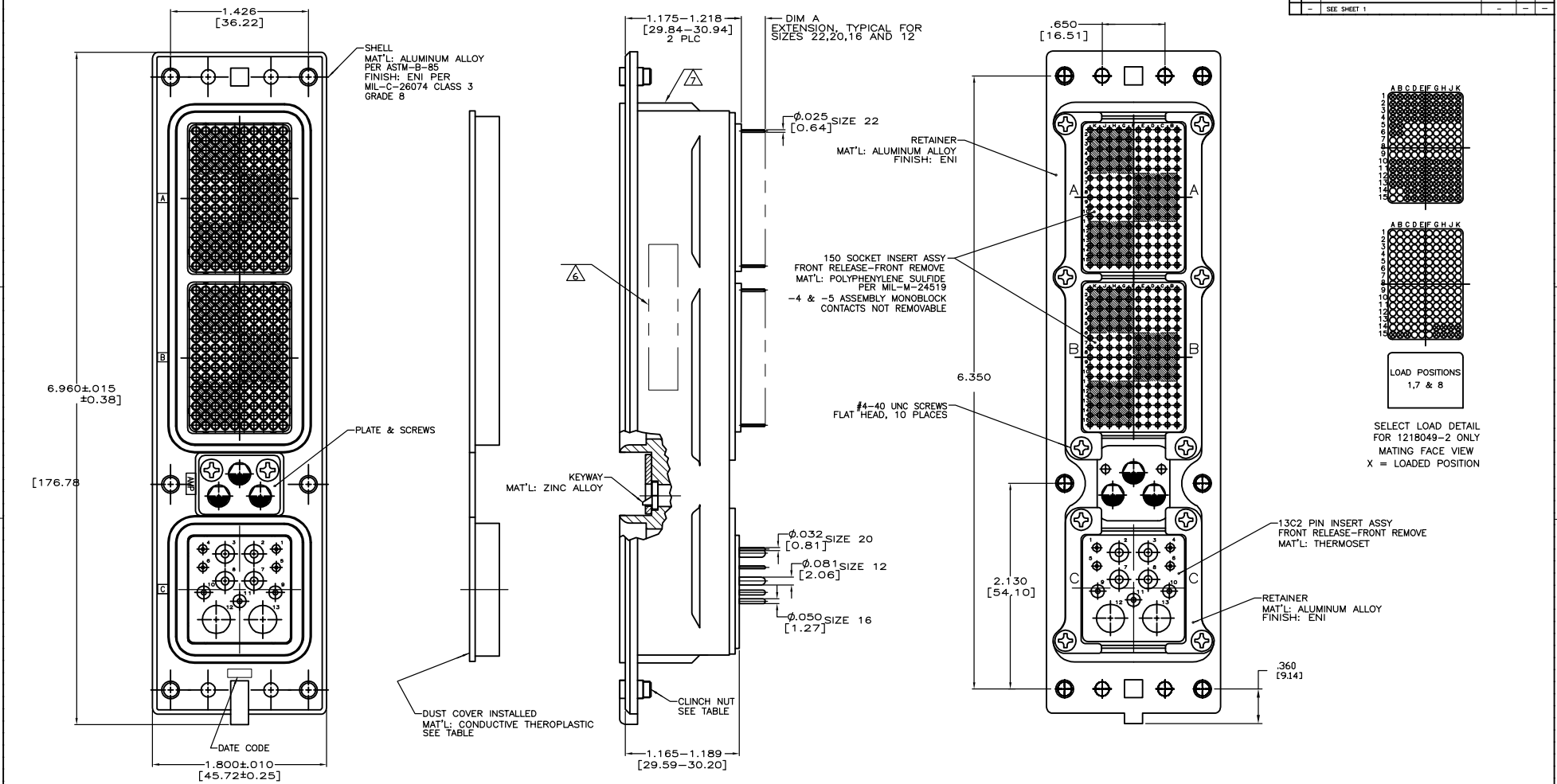
NO	TOLERANCE	DESCRIPTION	QTY	KEYING POSITION	CONTACTS INCLUDED AND NOT INSTALLED	CONTACTS INCLUDED AND INSTALLED	PART NUMBER
	.250 MIN	(6) #6-32 AS SHOWN SELF-LOCKING	09	---	MODULE A & B 150 POSN MONOBLOCKS QTY 2 MODULE C CAVITIES 1,2,3,4,5,6,7,8,9,10 & 11 1-448138-2 (#20 POSTED) 1-448139-4 (#16 POSTED) 448140-3 (#12 POSTED)		1218049-5
⚠	.250 MIN	(6) #6-32 AS SHOWN SELF-LOCKING	09	---	MODULE A & B 150 POSN MONOBLOCKS QTY 2 MODULE C CAVITIES 1,2,3,4,5,6,7,8,9,10 & 11 1-448138-2 (#20 POSTED) 1-448139-4 (#16 POSTED) 448140-3 (#12 POSTED)		1218049-4
⚠	.250 MIN	(6) #6-32 AS SHOWN SELF-LOCKING	09	---	MODULE A & B 211431-4 (SIZE 22) MODULE C CAVITIES 1,2,3,4,5,6,7,8,9,10 & 11 1-448138-2 (#20 POSTED) 1-448139-4 (#16 POSTED) 448140-3 (#12 POSTED)		1218049-3
	⚠ .141-.181 [3.58-4.60]	(10) #4-40 FREE RUNNING	88	---	MODULE A & B 211431-2 (SIZE 22) (111) MODULE C 1-448140-2 (#12 POSTED) 2-448138-0 (#20 POSTED) SELECT LOAD PER DETAIL		1218049-2
	.250 MIN	(6) #6-32 AS SHOWN SELF-LOCKING	09	1218241-2 (#12 SOLDER CUP) 1218240-2 (#20 SOLDER CUP)	MODULE A & B 211431-4 (SIZE 22) MODULE C CAVITIES 2,3,4,5,6,8,9,10 & 11 1-448138-2 (#20 POSTED) 1-448139-4 (#16 POSTED) 448140-3 (#12 POSTED)		1218049-1
REMARKS	DUST COVER INCLUDED	DIM A	CLINCH NUTS	KEYING POSITION	CONTACTS INCLUDED AND NOT INSTALLED	CONTACTS INCLUDED AND INSTALLED	PART NUMBER

THIS DRAWING IS A CONTROLLED DOCUMENT.

DESIGNED BY: J.A. Baker	DATE: 09-28-07	 TE Connectivity
DRAWN BY: A. SHARPE	DATE: 10-30-07	
CHECKED BY: A. SHARPE	DATE: 10-30-07	RCPT ASSY, SIZE 2, ARINC 600
DIMENSIONS: D, P, L, R, S, T, W, H, A, B, C, D, E, F, G, H, I, J, K, L, M, N, O, P, Q, R, S, T, U, V, W, X, Y, Z UNLESS OTHERWISE SPECIFIED: D, P, L, R, S, T, W, H, A, B, C, D, E, F, G, H, I, J, K, L, M, N, O, P, Q, R, S, T, U, V, W, X, Y, Z DIMENSIONS: D, P, L, R, S, T, W, H, A, B, C, D, E, F, G, H, I, J, K, L, M, N, O, P, Q, R, S, T, U, V, W, X, Y, Z UNLESS OTHERWISE SPECIFIED: D, P, L, R, S, T, W, H, A, B, C, D, E, F, G, H, I, J, K, L, M, N, O, P, Q, R, S, T, U, V, W, X, Y, Z	PRODUCT SPEC: --- APPLICATION SPEC: --- WEIGHT: --- MATERIAL: --- FINISH: --- SEE CALLOUTS: ---	SIZE: --- CASE CODE: --- DRAWING NO: --- CUSTOMER DRAWING: A100779-1218049 SCALE: 2:1 SHEET: 1 of 2

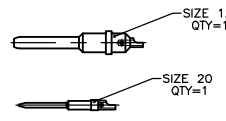
THIS DRAWING IS UNPUBLISHED
 RELEASED FOR PUBLICATION
 ALL RIGHTS RESERVED

REVISIONS			
REV	DATE	DESCRIPTION	APP'D
-	-	SEE SHEET 1	-



LOAD POSITIONS
1,7 & 8

SELECT LOAD DETAIL
FOR 1218049-2 ONLY
MATING FACE VIEW
X = LOADED POSITION



THIS DRAWING IS A CONTROLLED DOCUMENT.		BY: J.A. Baker 09-28-97	ESTE TE Connectivity	
DRAWN BY: A. SHARPE 10-20-97		CHK: A. SHARPE 10-20-97	RCPT ASSY, SIZE 2, ARINC 600	
DESIGNED BY: A. SHARPE 10-20-97		APP'D: A. SHARPE 10-20-97	PRODUCT SPEC: -	
DIMENSIONS: INCHES (mm)		APPLICATION SPEC: -		
TOLERANCES UNLESS OTHERWISE SPECIFIED:		WEIGHT: -		
D, PLC	± .005	SIZE: A1 00779 C-1218049		
F, RAC	± .010 (0.25)	DATE CODE: -		
H, RAC	± .015 (0.38)	DRAWING NO: -		
M, RAC	± .020 (0.51)	RESTRICTED TO: -		
ANGLES	± .001	SCALE: 2:1 SHEET 2 OF 2		
MATERIAL: SEE CALLOUTS		CUSTOMER DRAWING		