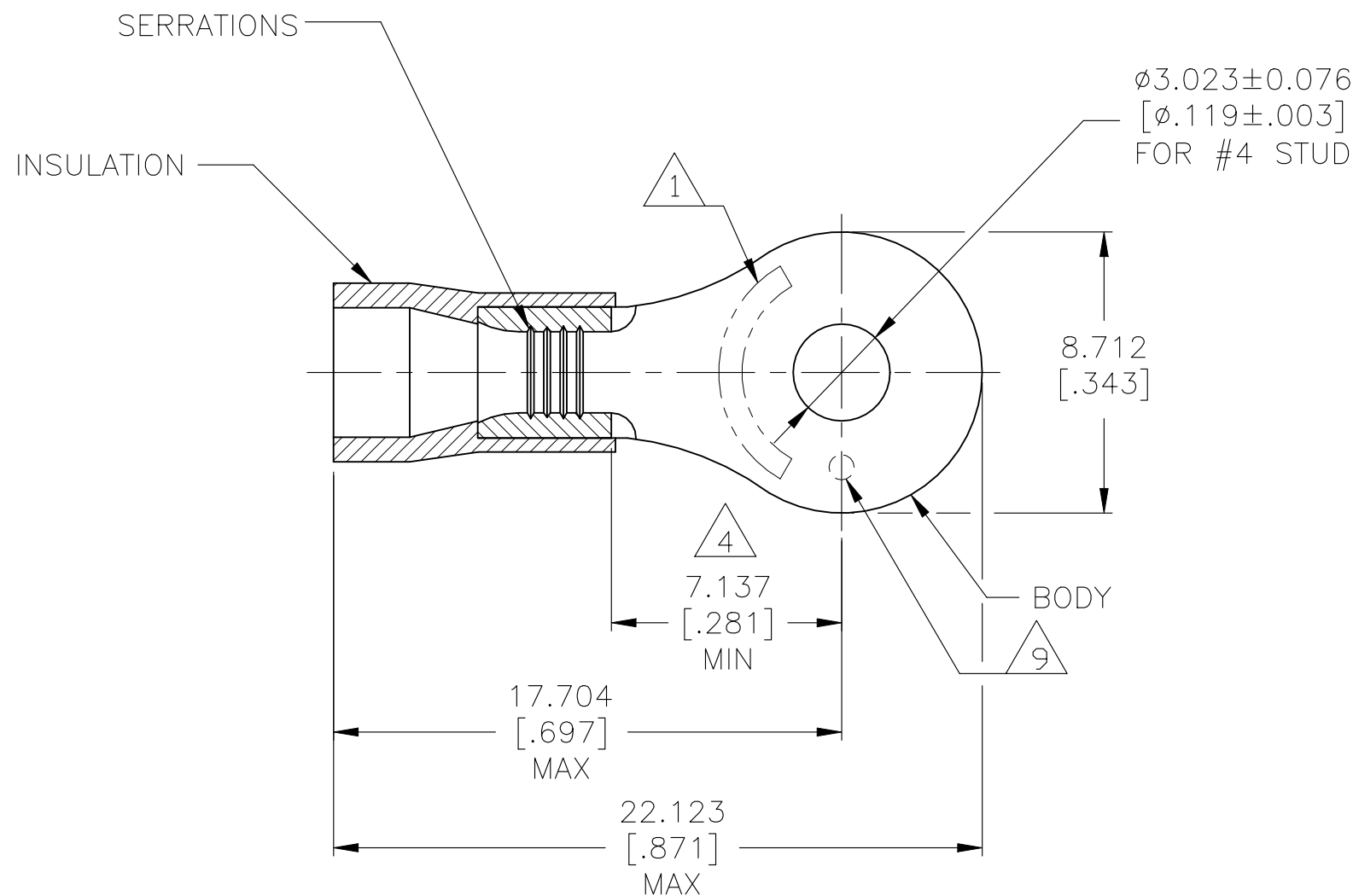


REVISIONS

P	LTR	DESCRIPTION	DATE	DWN	APVD
E		REVISED PER ECR-23-181664	04AUG2023	AP	DSC



- 1 STAMP AMP 16-14*, APPROX AS SHOWN
- 2 WIRE INSULATION DIAMETER: ø2.997[.118] TO ø4.826[.190]
- 3 BODY MATERIAL THK: 0.787±0.051[.031±.002]
- 4 DIMENSION APPLIES FROM EDGE OF METAL WIRE BARREL TO CENTER OF STUD HOLE.
- 5 NOTE DELETED
- 6 NOTE DELETED
- 7 MATERIAL:
BODY - COPPER PER ASTM B152
INSULATION - PVC
- 8 FINISH:
BODY - TIN PLATE 0.00254[.000100]
MIN EXT THK PER ASTM B545
INSULATION COLOR - BLUE
- 9 DIMPLE STAMP MARK OPTIONAL

AMP WIRE RANGE	E13288 Listed	LR7189 Certified
16-14 AWG SOLID OR STRANDED	16-14 AWG SOLID OR STRANDED	16-14 AWG SOLID OR STRANDED

TAPE & REEL	STANDARD	4000	2-130417-1
LOOSE PIECE, BAG	STANDARD	1000	130417
PACKAGING TYPE	LABELLING	QTY	PART NO

AMP INCORPORATED CUSTOMER SERVICE SYSTEMS	
FOR ADDITIONAL PRODUCT INFORMATION OR COPIES OF DRAWINGS AND TECHNICAL DOCUMENTS	PRODUCT INFORMATION CENTER 1-800-522-6752
FOR APPLICATION TOOLING INFORMATION	TOOLING ASSISTANCE CENTER 1-800-722-1111
FOR ORDER ENTRY	1-800-526-5142

MAX RECOMMENDED OPERATING TEMPERATURE: 105°C [221°F]
VOLTAGE RATING: 600 V MAX [1000V SIGNS OR FIXTURES]
WIRE CROSS SECTIONAL AREA RANGE: 1.04-2.62mm ² [2050-5180] SOLID OR STRANDED
THIS DRAWING IS A CONTROLLED DOCUMENT FOR AMP INCORPORATED. IT IS SUBJECT TO CHANGE AND THE CONTROLLING ENGINEERING ORGANIZATION SHOULD BE CONTACTED FOR THE LATEST REVISION

THIS DRAWING IS A CONTROLLED DOCUMENT.	
DIMENSIONS: mm [INCHES]	TOLERANCES UNLESS OTHERWISE SPECIFIED:
	0 PLC ± -
	1 PLC ± -
	2 PLC ± -
	3 PLC ± 0.127[.005]
	4 PLC ± -
	ANGLES ± -
MATERIAL	FINISH

DWN jr_ruth 06DEC05	TE Connectivity		
CHK T MICHELUTTI 06DEC05	NAME TERMINAL, RING TONGUE, PLASTI-GRIP, WIRE SIZE: 16-14 AWG		
APVD T MICHELUTTI 06DEC05	PRODUCT SPEC UL 486A-B		
APPLICATION SPEC 114-2161	SIZE A3	CAGE CODE 00779	DRAWING NO C-130417
WEIGHT -	RESTRICTED TO -		SCALE 5:1
CUSTOMER DRAWING		SHEET 1 OF 1	REV E