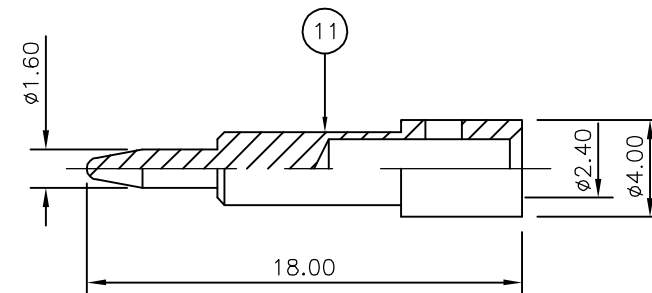
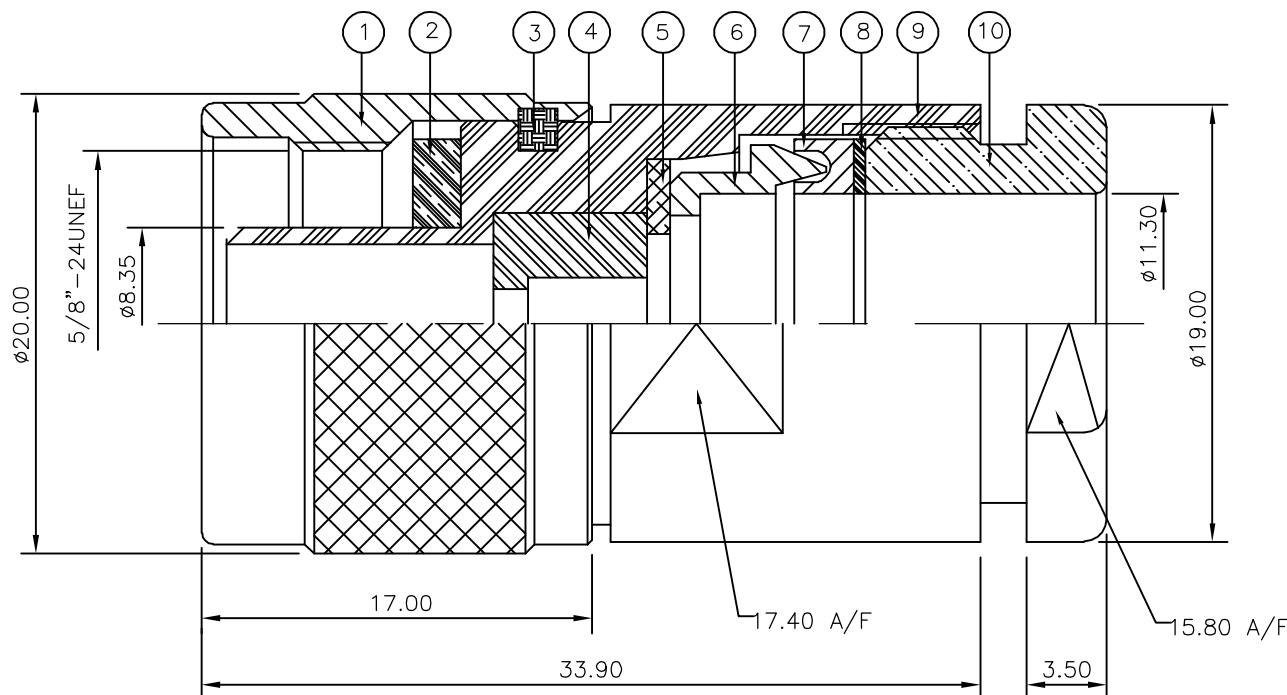


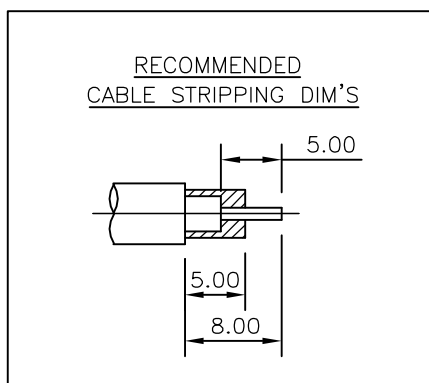
LOC E	DIST B	REVISIONS		
P	LTR	DESCRIPTION	DATE	DWN
	C	ECR-05-010526	14SEP05	JMS
				APVD FWK

NOTES:

- 1 PACK IN ACCORDANCE WITH AMP SPEC 107-3275
- 2 100 TRAY PACK IN ACCORDANCE WITH AMP SPEC 107-3275
- 3 Ag PLATING
- 4 THIS ITEM MUST BE WHITE
- 5. ELECTRICAL CHARACTERISTICS
 FREQUENCY RANGE: DC - 11 GHz
 NOMINAL IMPEDANCE: 50 Ohm
 INSULATION RESISTANCE: 5000 MOhm
 WORKING VOLTAGE: 1000 Volts RMS at Sea Level
 DIELECTRIC WITHSTAND VOLTAGE: 2500 Volts RMS Max
 CONTACT RESISTANCE:
 CENTRE CONTACT: 1.00 mOhm Max
 OUTER CONTACT: 1.00 mOhm Max
 VSWR @ 4GHz: 1.30:1 Max
 INSERTION LOSS dB @ x 4 GHz: 0.30 Max
- 6. MECHANICAL CHARACTERISTICS
 COUPLING NUT RETENTION FORCE: 445N Min
 CABLE RETENTION FORCE: 350N Min
 CLAMP NUT RECOMMENDED TORQUE: 4.5N
 DURABILITY: 500 Cycles Min
- 7. ENVIRONMENTAL CHARACTERISTICS
 OPERATING TEMPERATURE: -65 to +165 DegC



QTY	PLC	QTY	PLC	MATERIAL	DESCRIPTION	ITEM
1	1	1	1	BRASS	CONTACT	11
1	1	1	1	BRASS	CLAMP NUT	10
1	1	1	1	BRASS	BODY	9
1	1	1	1	BRASS	WASHER	8
1	1	1	1	SILICON RUBBER	GASKET	7
1	1	1	1	BRASS	SLEEVE	6
1	1	1	1	BRASS	WASHER	5
1	1	1	1	PTFE	INSULATION	4
1	1	1	1	BRASS	CIRCLIP	3
1	1	1	1	SILICON RUBBER	GASKET	2
1	1	1	1	BRASS	SHELL	1
6--0	1--0			MATERIAL	DESCRIPTION	ITEM



THIS DRAWING IS A CONTROLLED DOCUMENT.		DWN J.SANDWELL 14SEP05	Tyco Electronics Corporation Bideford EX39 4HE	
DIMENSIONS: mm		CHK S.PARLOW 14SEP05	NAME TYPE-N STRAIGHT PLUG SOLDER 50 OHM PSF1/4M, RG8A/U, 213/U, URM67, KX4	
TOLERANCES UNLESS OTHERWISE SPECIFIED: 0 PLC ± - 1 PLC ± - 2 PLC ± - 3 PLC ± - 4 PLC ± - ANGLES ± -		APVD F.WHEELER-KING 14SEP05	PRODUCT SPEC 108-3435	
MATERIAL SEE TABLE		FINISH SEE TABLE	APPLICATION SPEC 411-3252	
WEIGHT -		SIZE A3		CAGE CODE 00779
CUSTOMER DRAWING		DRAWING NO C-1337402		RESTRICTED TO -
SCALE NTS		SHEET 1 OF 1		REV C