

4

3

2

1


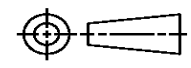
THIS DRAWING IS UNPUBLISHED. RELEASED FOR PUBLICATION
© COPYRIGHT ALL RIGHTS RESERVED.

LOC	DIST	REVISIONS			
P	LTR	DESCRIPTION	DATE	DWN	APVD
	F1	ECR-16-009824	28JUL2016	GK	SD

REPLACED BY OCEAN STYLE APPLICATOR PART NUMBER 2836203-1

FOR REPLACEMENT PARTS FOR APPLICATOR 1528051
REFER TO ADDITIONAL PAGE(S). SPARE PARTS KIT (IF LISTED)
WILL REMAIN AVAILABLE.

THE REPLACEMENT OCEAN STYLE APPLICATOR HAS THE
SAME TERMINATOR/PRESS INTERFACE AS APPLICATOR
1528051

THIS DRAWING IS A CONTROLLED DOCUMENT.		DWN	GOPALAKRISHNA HV		 TE Connectivity
DIMENSIONS:		CHK	GOPALAKRISHNA HV		
		TOLERANCES UNLESS OTHERWISE SPECIFIED:		APVD	NAME
		0 PLC ± 1 PLC ± 2 PLC ± 3 PLC ± 4 PLC ± ANGLES ±		STOUGH DALE	FINE ADJ SIDE FD HD-I APPL
MATERIAL		FINISH		PRODUCT SPEC	APPLICATION SPEC
				WEIGHT	RESTRICTED TO
				SIZE	CAGE CODE
				A3	DRAWING NO
				©- 1528051	
				CUSTOMER ACCESSIBLE PRODUCTION DRAWING	SCALE
				SHEET 1 OF 2	REV F1

THIS DRAWING IS A CONTROLLED DOCUMENT.

PART NUMBER	REV	FIRST USED	TERMINATOR	FEED TYPE	DESCRIPTION
1528051-1	F	-	LEADMAKER	MECH POST FEED	CUTS CARRIER
1528051-2	F	-	BENCH	MECH PRE FEED	CUTS CARRIER
1528051-6	F	-	LEADMAKER	MECH POST FEED	CONTINUOUS CARRIER
7-1528051-1	F	-	LEADMAKER	MECH POST FEED	-1 AND SPARE PARTS
7-1528051-2	F	-	BENCH	MECH PRE FEED	-2 AND SPARE PARTS
7-1528051-6	F	-	LEADMAKER	MECH POST FEED	-6 AND SPARE PARTS
7-1528051-7	A	-	-	-	SPARE PARTS KIT

CRIMP DATA AMP TERMINAL AMP CRIMP SPECS			
TERMINAL NAME: .250 FASTIN-FASTON TAB ACC.DIN 46343			
CRIMP	SIZE	TYPE	RANGE
WIRE	2.03 [.080 IN]	F	0.5mm ² - 1.0mm ²
INSUL	2.79 [.110 IN]	OV	1.40-2.10 [.055-.083 IN]
WIRE STRIP LENGTH	3.96-4.78 [.156-.188 IN]		APPL INSTRUCTION 408-8322 & 408-8490
TERMINAL APPL SPEC 114-18022			FEED 16.5 [.650 IN]

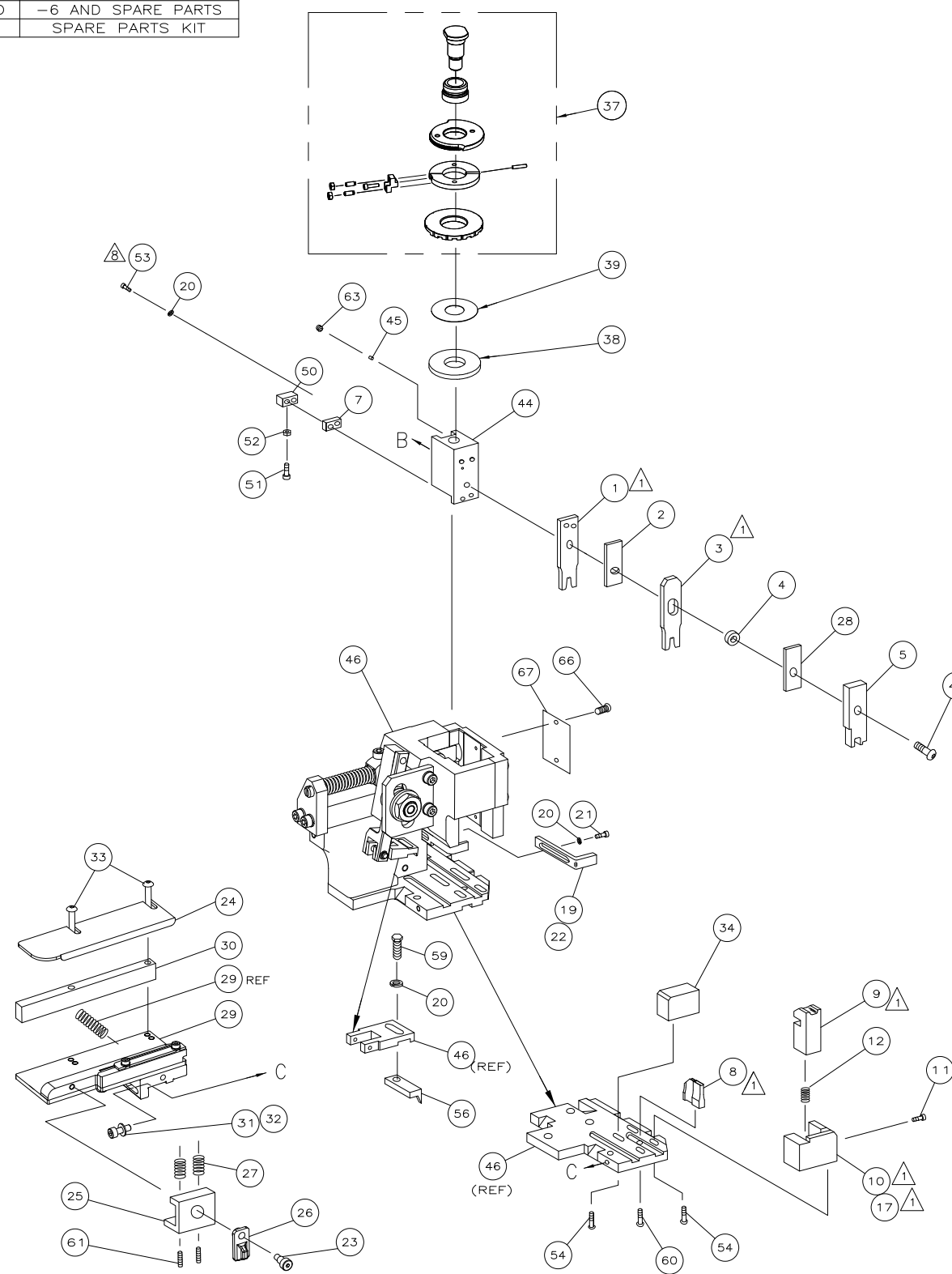
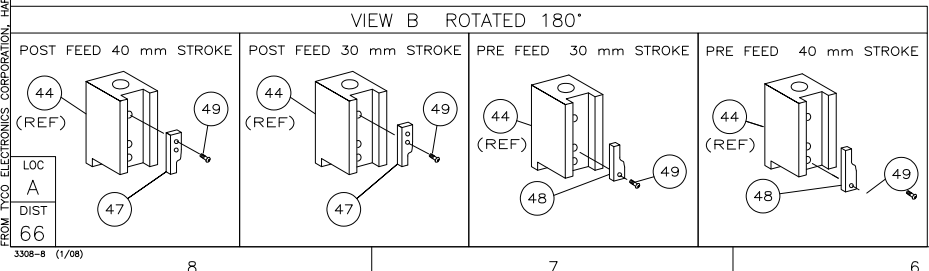
TERMINALS APPLIED			
963951	-	-	-
-	-	-	-
-	-	-	-
-	-	-	-
-	-	-	-
-	-	-	-
-	-	-	-
-	-	-	-
-	-	-	-
-	-	-	-
-	-	-	-
-	-	-	-
-	-	-	-
-	-	-	-
-	-	-	-
-	-	-	-
-	-	-	-

WIRE SIZE mm ² AWG	CRIMP HEIGHT *	REF SETTINGS *
(2)0.50mm ² or 1.00mm ²	1.56 ±0.05 [.061 ±0.002 IN]	C1
0.35 + 0.50mm ²	1.51 ±0.05 [.059 ±0.002 IN]	C4
0.75mm ²	1.47 ±0.05 [.058 ±0.002 IN]	C6
(2)0.35mm ²	1.45 ±0.05 [.057 ±0.002 IN]	C8
0.50mm ²	1.38 ±0.05 [.054 ±0.002 IN]	D3
-	-	-
-	-	-
-	-	-
-	-	-
-	-	-
-	-	-
-	-	-
-	-	-
-	-	-
-	-	-
-	-	-
-	-	-
-	-	-
-	-	-

SET UP GAGE	LAYOUT
458637-3	L1426096

- 1 RECOMMENDED SPARE PARTS.
- 2. GREASE RAM, CAM, CAM FOLLOWER AND FEED ROD LIGHTLY.
- 3. LUBRICATE DAILY PER THE APPLICATOR INSTRUCTION SHEET SUPPLIED WITH THE APPLICATOR.
- 4 CUT TO LENGTH AT ASSY.

*** WARNING:**
ON INSTALLATION, SET WIRE DISC TO LARGEST WIRE SIZE SETTING. USE OF SETTINGS BELOW MIN REQ'D CRIMP HEIGHT SETTING WILL CAUSE DAMAGE TO CRIMP TOOLING.



PARTS LIST												
QTY	REQD	PER	ASSY	PART NO	DESCRIPTION	ITEM NO						
1	1	1	1	1	1528051	PRINT, APPLICATOR LOG SHEET	73					
1	1	1	1	1	1338705-3	DOCUMENTATION PACKAGE	72					
-	-	-	-	-	-	-	71					
-	-	-	-	-	-	-	70					
-	-	-	-	-	-	-	69					
-	-	-	-	-	-	-	68					
1	1	1	1	1	461264-5	PLATE, IDENTIFICATION	67					
2	2	2	2	2	21017-2	SCR,DRIVE(#2x.19)ID PLATE	66					
-	-	-	-	-	-	-	65					
-	-	-	-	-	-	-	64					
1	1	1	1	1	3-18031-0	SCR,SKT SET(M6X6)RAM	63					
-	-	-	-	-	-	-	62					
2	2	2	2	2	2-18032-5	SCR,SET(M5X20)DRAG	61					
1	1	1	1	1	18024-7	SCR,BHC(M4X10)ANVIL	60					
1	1	1	1	1	5-18022-2	SCR,HEX(M4X8)FEED FINGER	59					
-	-	-	-	-	-	-	58					
-	-	-	-	-	-	-	57					
1	1	1	1	1	1338685-1	PAWL, FEED	56					
-	-	-	-	-	-	-	55					
4	4	4	4	4	18024-8	SCR,BHC(M4X12)SHEAR HOLDER	54					
2	2	2	2	2	1-18023-5	SCR,SHC(M4X25)TERM HLD DWN	53					
1	1	1	1	1	18030-1	NUT,HEX(M3)HOLD DOWN	52					
1	1	1	1	1	811242-5	BUMPER, HOLDDOWN	51					
1	1	1	1	1	690753-2	SPACER, TONKER	50					
1	1	1	1	1	18024-3	SCR,BHC(M3X10)CAM	49					
-	-	-	-	-	-	-	48					
1	1	1	1	1	1338675-1	CAM, PRE FEED 30 & 40 mm ST	47					
1	1	1	1	1	1338676-1	CAM, POST FEED 30 & 40 mm ST	46					
1	1	1	1	1	1320999-3	APPLICATOR BASIC SUBASSY	45					
1	1	1	1	1	690191-1	PLUG, NYLON	44					
1	1	1	1	1	1338660-1	RAM	43					
-	-	-	-	-	-	-	42					
-	-	-	-	-	-	-	41					
1	1	1	1	1	2-18024-6	SCR,BHC(M8X25)RAM	40					
-	-	-	-	-	-	-	39					
1	1	1	1	1	690125-1	SHIM SUBASSY	38					
1	1	1	1	1	469367-9	SPACER, FINE ADJUST	37					
1	1	1	1	1	879103-2	FINE ADJUST HEAD SUBASSY	36					
-	-	-	-	-	-	-	35					
1	1	1	1	1	1320934-5	SUPPORT, TERMINAL	34					
2	2	2	2	2	1-18024-0	SCR,BHC(M4X20)STRIP GUIDE	33					
1	1	1	1	1	18027-2	WASHER, FLAT(M4)	32					
1	1	1	1	1	1-18023-2	SCR,SKT CAP(M4X12)MOUNT BLOCK	31					
1	1	1	1	1	1320908-4	SPACER, STRIP GUIDE	30					
-	-	-	-	-	-	-	29					
1	1	1	1	1	1-455888-5	SPACER, FRONT SHEAR DEP	28					
2	2	2	2	2	1-22284-0	SPRING, DRAG	27					
1	1	1	1	1	356835-1	LEVER, DRAG RELEASE	26					
1	1	1	1	1	240792-1	DRAG, TERMINAL	25					
1	1	1	1	1	1320928-5	PLATE, STRIP GUIDE	24					
1	1	1	1	1	980371-4	SCR,SHC SHLD	23					
1	1	1	1	1	690472-2	STRIPPER	22					
1	1	1	1	1	1-18023-1	SCR,SHC(M4X10)STRIPPER	21					
4	4	4	4	4	18025-2	WASHER_LOCK(M4)STRIPPER	20					
1	1	1	1	1	690472-1	STRIPPER	19					
1	1	1	1	1	1338684-1	HOLDER, SHEAR, FRONT (NO-CUT)	18					
-	-	-	-	-	-	-	17					
-	-	-	-	-	-	-	16					
-	-	-	-	-	-	-	15					
-	-	-	-	-	-	-	14					
-	-	-	-	-	-	-	13					
1	1	1	1	1	3-22280-3	SPRING, SHEAR	12					
1	1	1	1	1	356885-4	STOP, SHEAR	11					
1	1	1	1	1	1320921-1	HOLDER, SHEAR, FRONT (CUT)	10					
1	1	1	1	1	454276-1	SHEAR, FLOAT (FRONT)	9					
2	2	2	2	2	1-1333204-4	ANVIL	8					
1	1	1	1	1	5-240641-1	SPACER, DEPRESSOR (REAR)	7					
-	-	-	-	-	-	-	6					
1	1	1	1	1	1-455889-4	DEPRESSOR, SHEAR (FRONT)	5					
1	1	1	1	1	1-238011-0	SPACER, BLOCK CRIMPER	4					
1	2	2	2	2	1-854830-5	CRIMPER, INSULATION	3					
1	1	1	1	1	1-455888-4	SPACER, CRIMPER	2					
1	2	2	2	2	1-456405-5	CRIMPER, WIRE	1					
-77	-76	-72	-71	-6	-2	-1						

Customer Accessible Production Drawing

QTY REQD PER ASSY

DIMENSIONS: INCHES

TOLERANCES UNLESS OTHERWISE SPECIFIED:

0	PLC	± .005
1	PLC	± .002
2	PLC	± .010
3	PLC	± .015
4	PLC	± .020

FINE ADJ SIDE FD HD-I APPL

SCALE: A1

DRAWING NO: 1528051

SHEET: 1 OF 1

REV: F