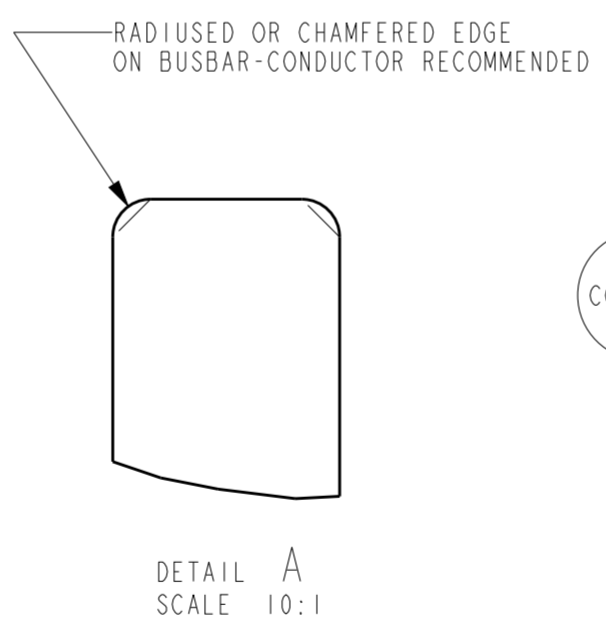
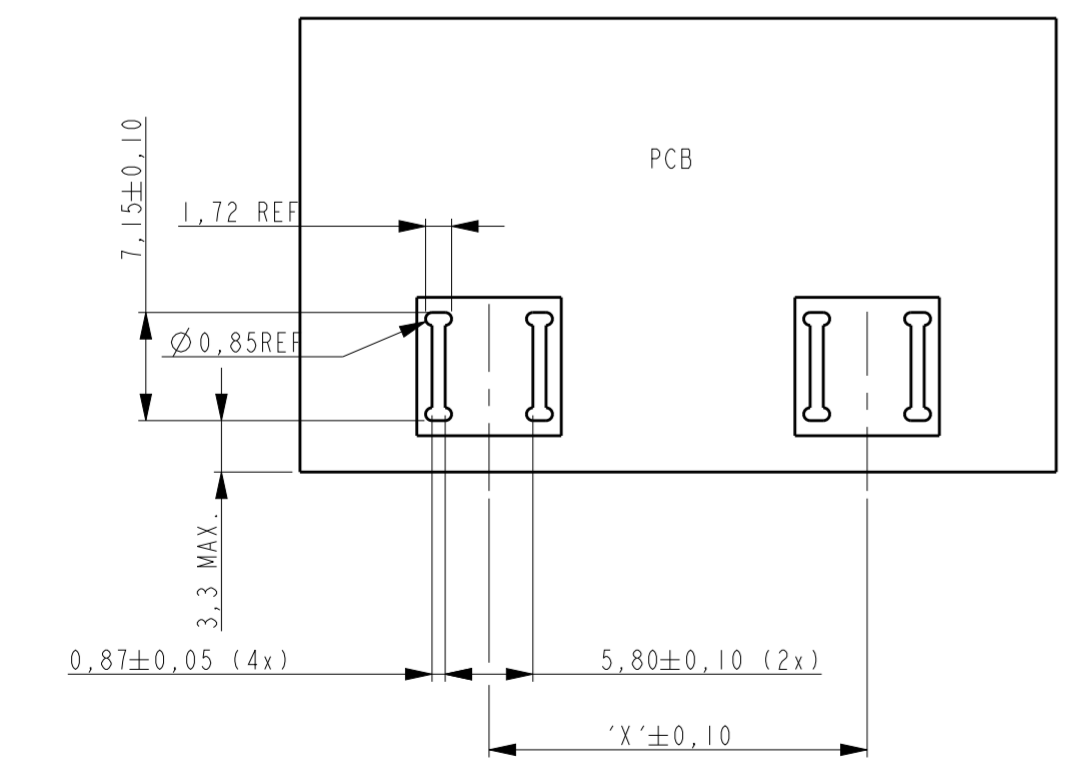
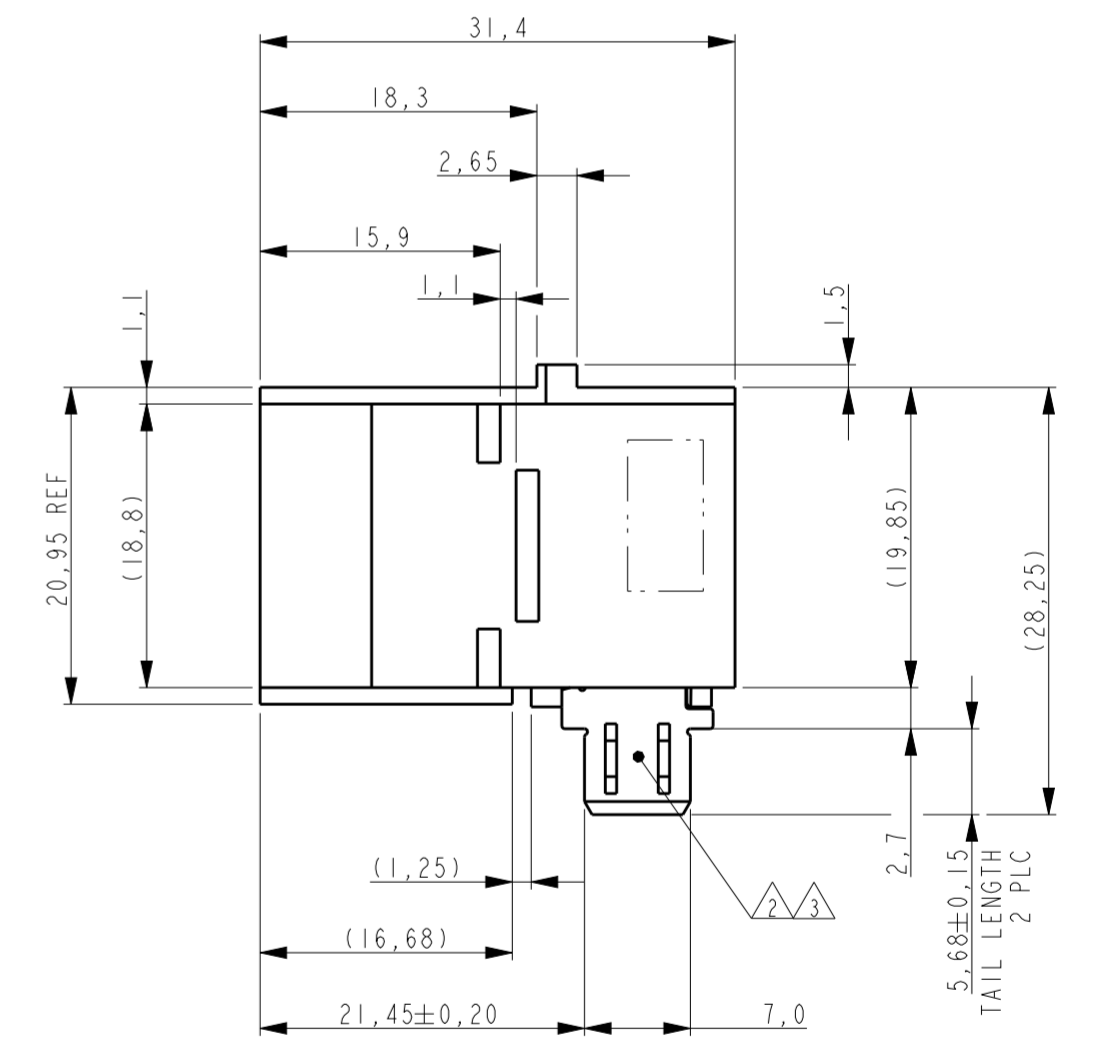
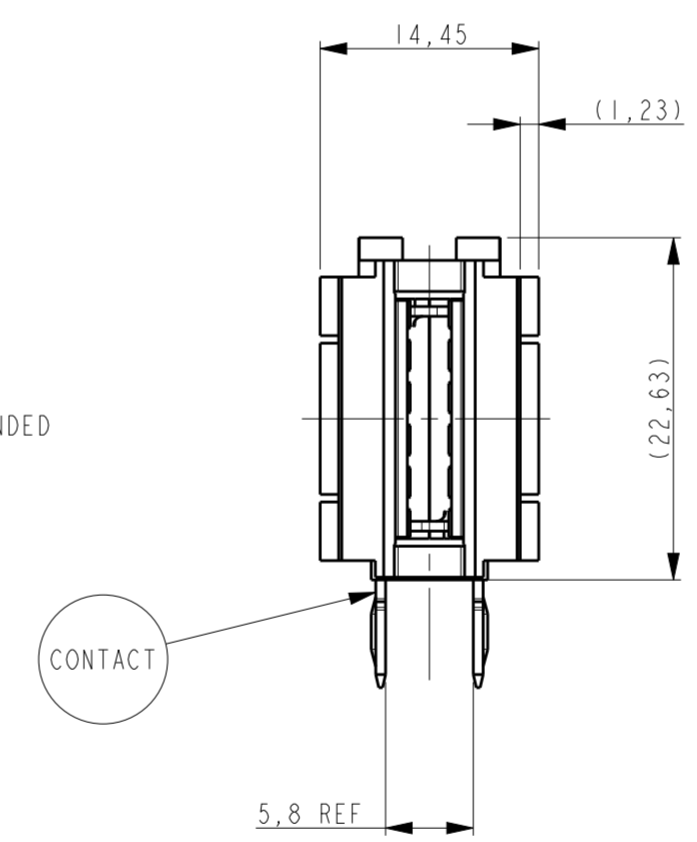
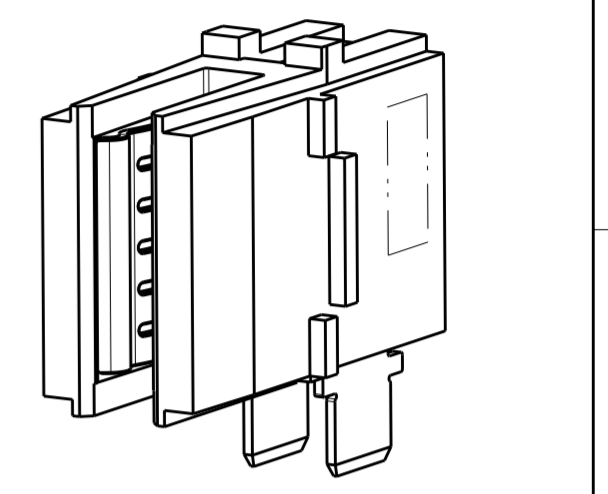
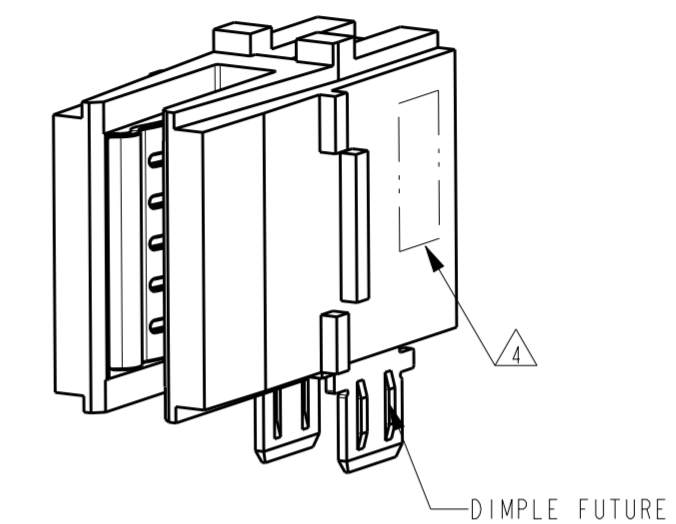
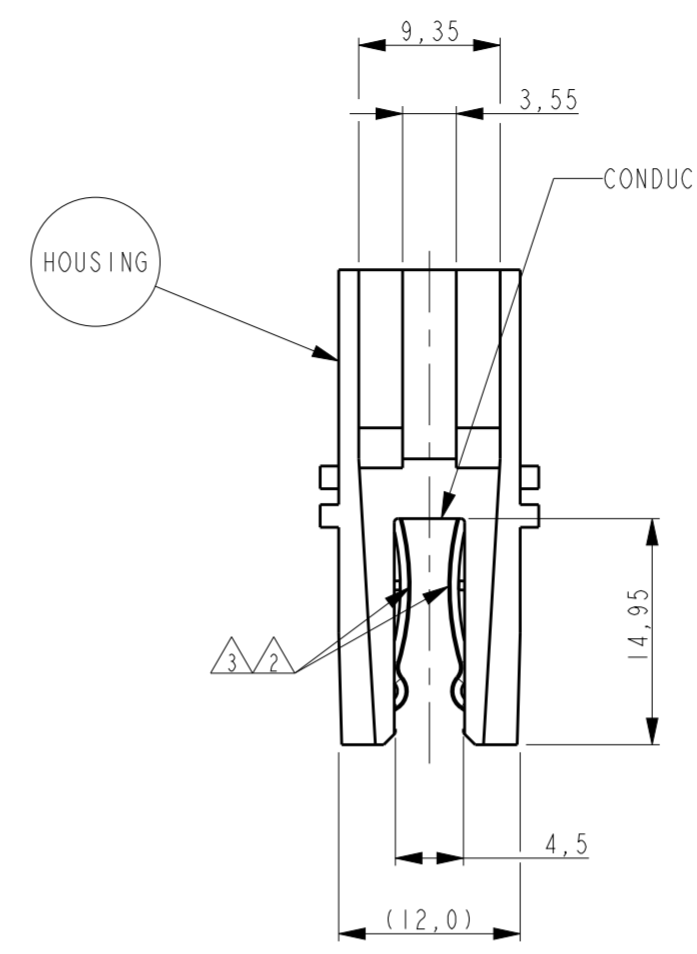
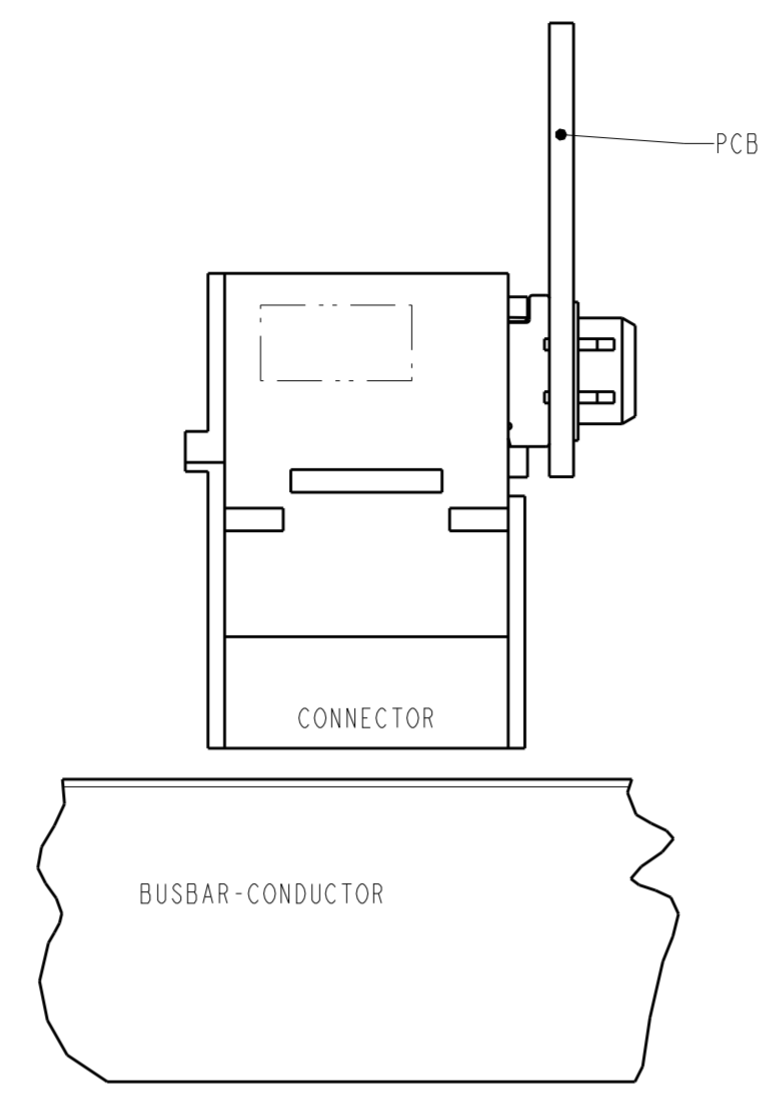
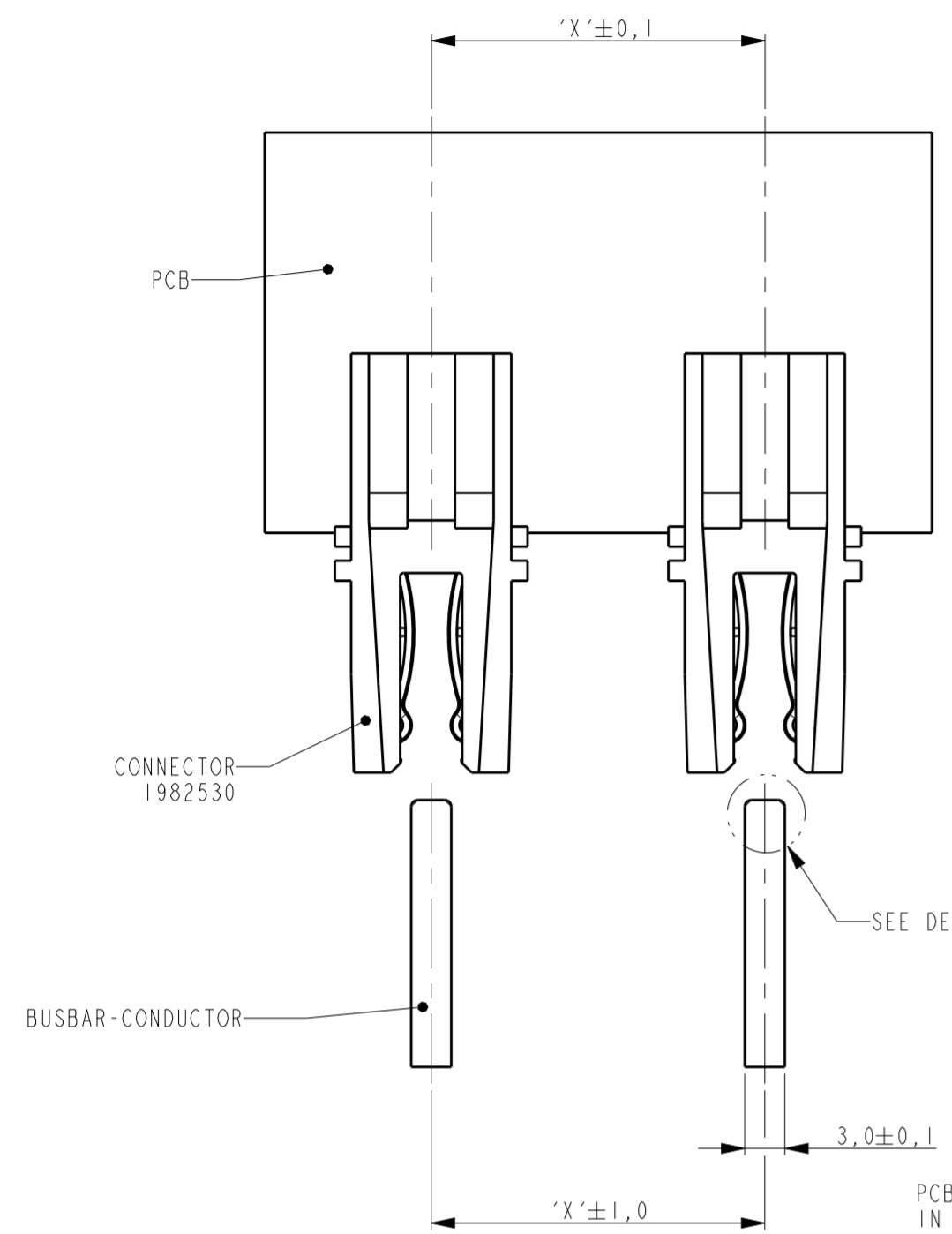


THIS DRAWING IS UNPUBLISHED. RELEASED FOR PUBLICATION
 © COPYRIGHT - BY - ALL RIGHTS RESERVED.

REVISIONS					
P	LTR	DESCRIPTION	DATE	DWN	APVD
A5		REV PER ECR-15-005882	20APR2015	ML	SZ
A6		REV PER ECR-16-002758	24AUG2016	ML	SZ



- NOTES:
- 1 PCB MUST BE SUPPORTED WHILE INSERTING THE CONNECTOR IN THE SLOTS TO AVOID BENDING OF THE BOARD.
 - △1 PLATING: 1,2µm MIN. NICKEL UNDERLAYER ALLOVER.
 - △2 3,0µm MIN. TIN IN INDICATED AREA'S.
 - △3 AREA FOR PART NUMBER AND DATE CODE.
 - △4 MATERIAL:
POWER CONTACT: HIGH CONDUCTIVITY COPPER ALLOY.
HOUSING: THERMOPLASTIC, BLACK, UL94 V-0.

5.68	NO	CROWN CLIP JUNIOR BUS BAR	1551953-2	2
5.68	YES	CROWN CLIP JUNIOR BUS BAR	1551953-1	1
TAIL LENGTH	DIMPLE FEATURE	DESCRIPTION	PART NUMBER	ITEM

THIS DRAWING IS A CONTROLLED DOCUMENT.		DWN RAVINDRA K 07DEC10	TE Connectivity PLUGGABLE BUS BAR CONNECTOR SOLDER VERSION CROWN CLIP JUNIOR	
DIMENSIONS: mm		CHK R. DAAMEN 10DEC10		
TOLERANCES UNLESS OTHERWISE SPECIFIED:		APVD T. D. BOER 10DEC10		
0 PLC ± 1 PLC ±0.30 2 PLC ±0.15 3 PLC ±0.05 4 PLC ± ANGLES ±2° FINISH -		PRODUCT SPEC 108-19360 APPLICATION SPEC 114-19128 WEIGHT -		
MATERIAL -		Customer Drawing	NAME SIZE A2 CAGE CODE 00779 DRAWING NO. C-1551953 RESTRICTED TO - SCALE 2:1 SHEET 1 OF 1 REV A6	