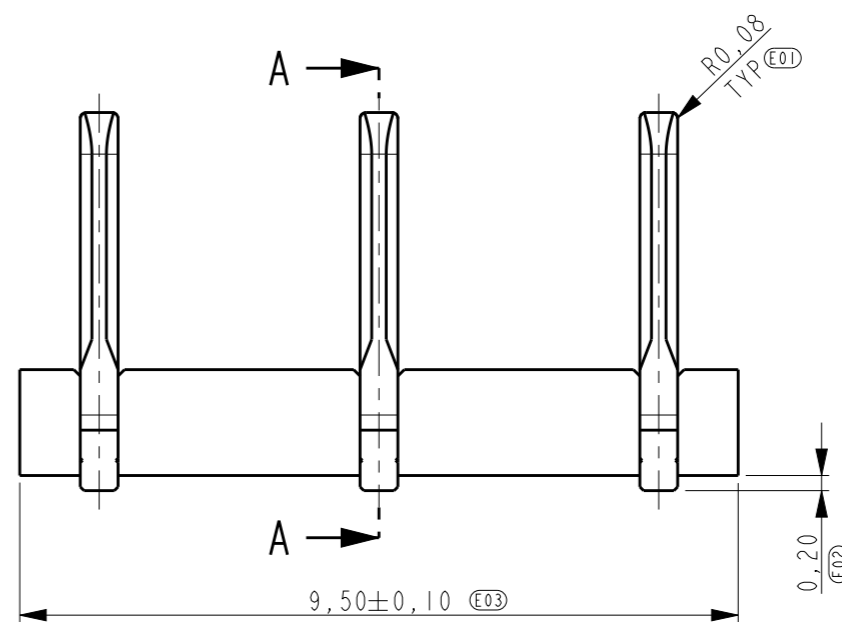
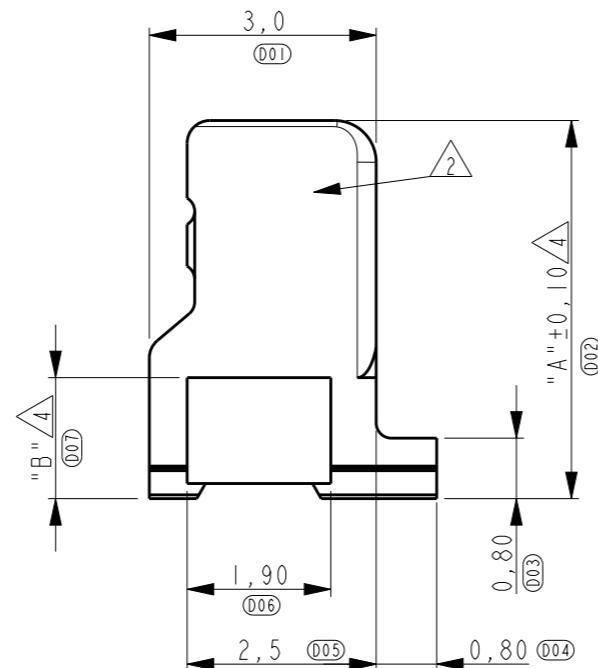
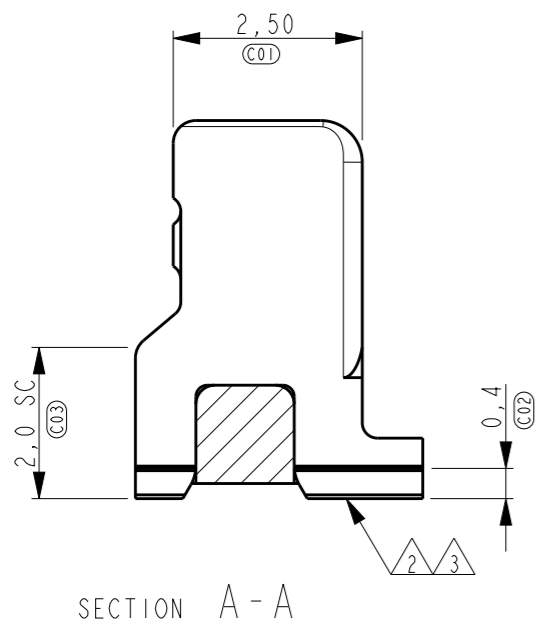
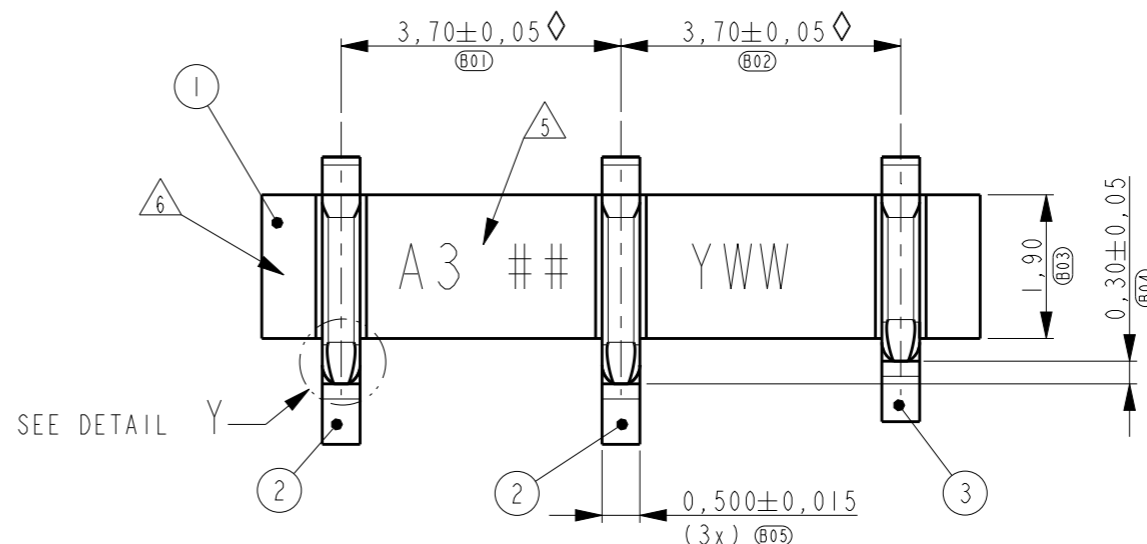
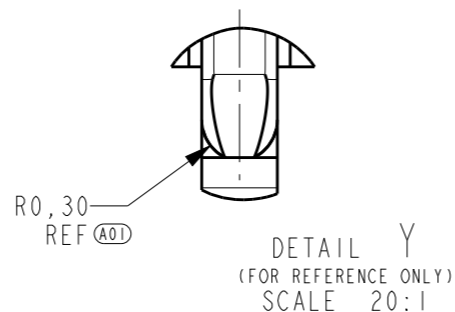


THIS DRAWING IS UNPUBLISHED. RELEASED FOR PUBLICATION
 © COPYRIGHT - BY - ALL RIGHTS RESERVED.

LOC	DIST	REVISIONS					
		P	LTR	DESCRIPTION	DATE	DWN	APVD
H	-		H	ECR-10-018708	09SEP2010	PW	DH
			J	ECR-12-004130	29MAR2012	PW	DH
			J1	ECR-13-013007	9OCT2013	E.L	WK.H
			J2	ECO-18-012432	28AUG2018	K.G	WK.H

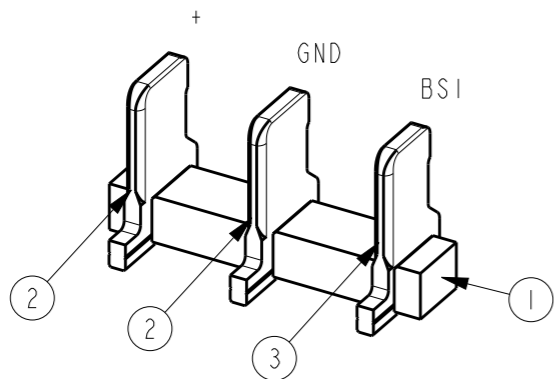
NOTES:

- 1 DRAWING REPRESENTS PART VERSION "A3".
- 2 PLATING:
 1,2µm MIN. NICKEL ALL OVER
 0,8µm MIN. GOLD ON CONTACT AREA
 0,05µm - 0,20µm GOLD ON SOLDER AREA
- 3 COPLANARITY OF SOLDER SURFACES 0,08 MAX.
- 4 DIMENSION DEPENDS ON DISTANCE BETWEEN PWB AND BATTERY, SEE TABLE ON SHEET 4.
- 5 MARKING: VERSION, PROCESS ID (##), PRODUCTION DATE (YWW, YEAR AND WEEK).
- 6 MARKING: CAVITY ID.
- 7 PN 2-1857084-5 AS SHOWN.



OBSOLETE

ITEM NO.	DESCRIPTION	MATERIAL	FINISH
3	CONTACT, FIRST BREAK	COPPER ALLOY	GOLD PLATED
2	CONTACT, LAST BREAK	COPPER ALLOY	GOLD PLATED
1	HOUSING	PLASTIC, GF	-



THIS DRAWING IS A CONTROLLED DOCUMENT.

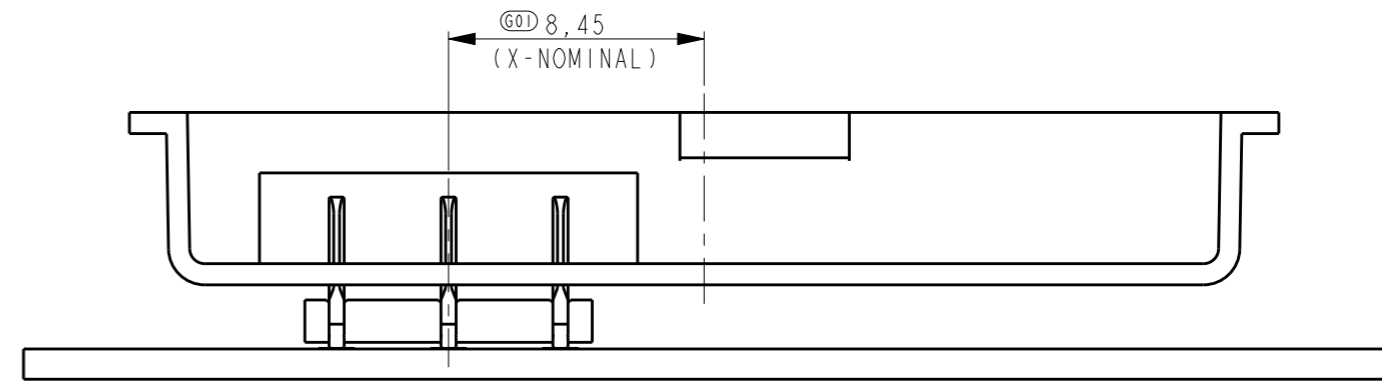
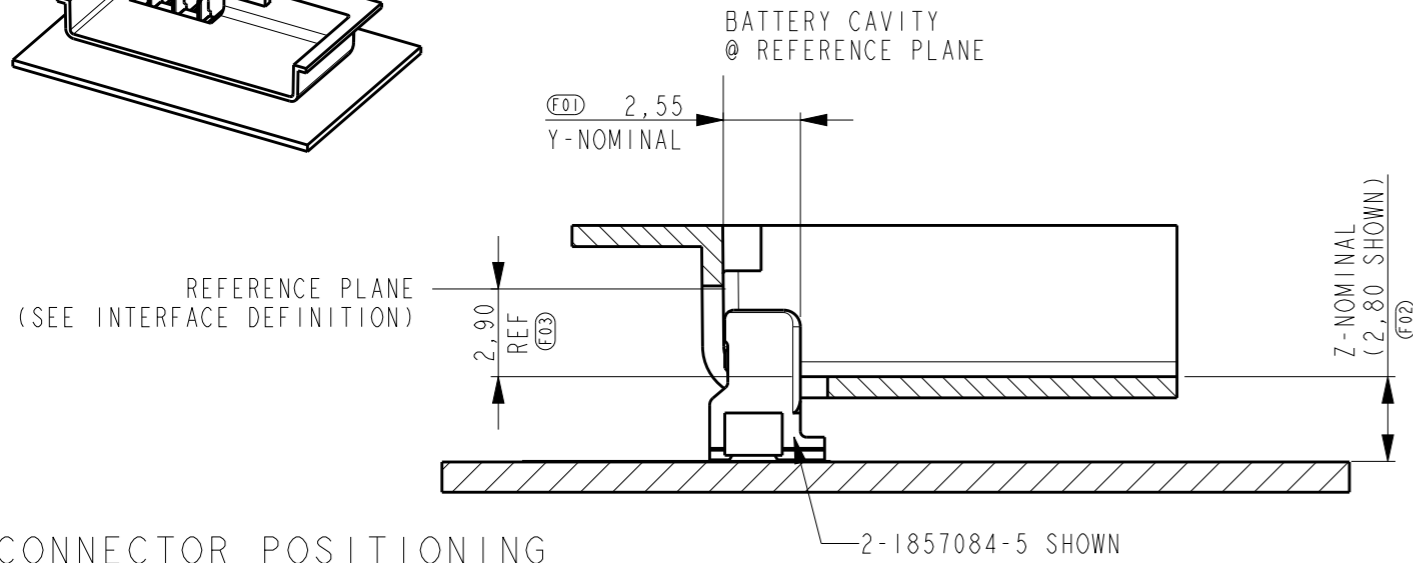
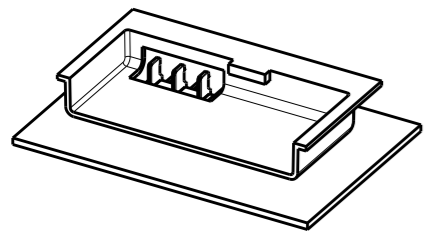
DIMENSIONS:	TOLERANCES UNLESS OTHERWISE SPECIFIED:
mm	
	0 PLC ±-
	1 PLC ±0,2
	2 PLC ±0,1
	3 PLC ±-
	4 PLC ±-
	ANGLES ±-
MATERIAL -	FINISH -

DWN	J. Tuin	29 APR 2005
CHK	J. Tuin	29 APR 2005
APVD	D. Halberstadt	29 APR 2005
PRODUCT SPEC	108-19276	
APPLICATION SPEC	-	
WEIGHT	-	
CUSTOMER DRAWING		

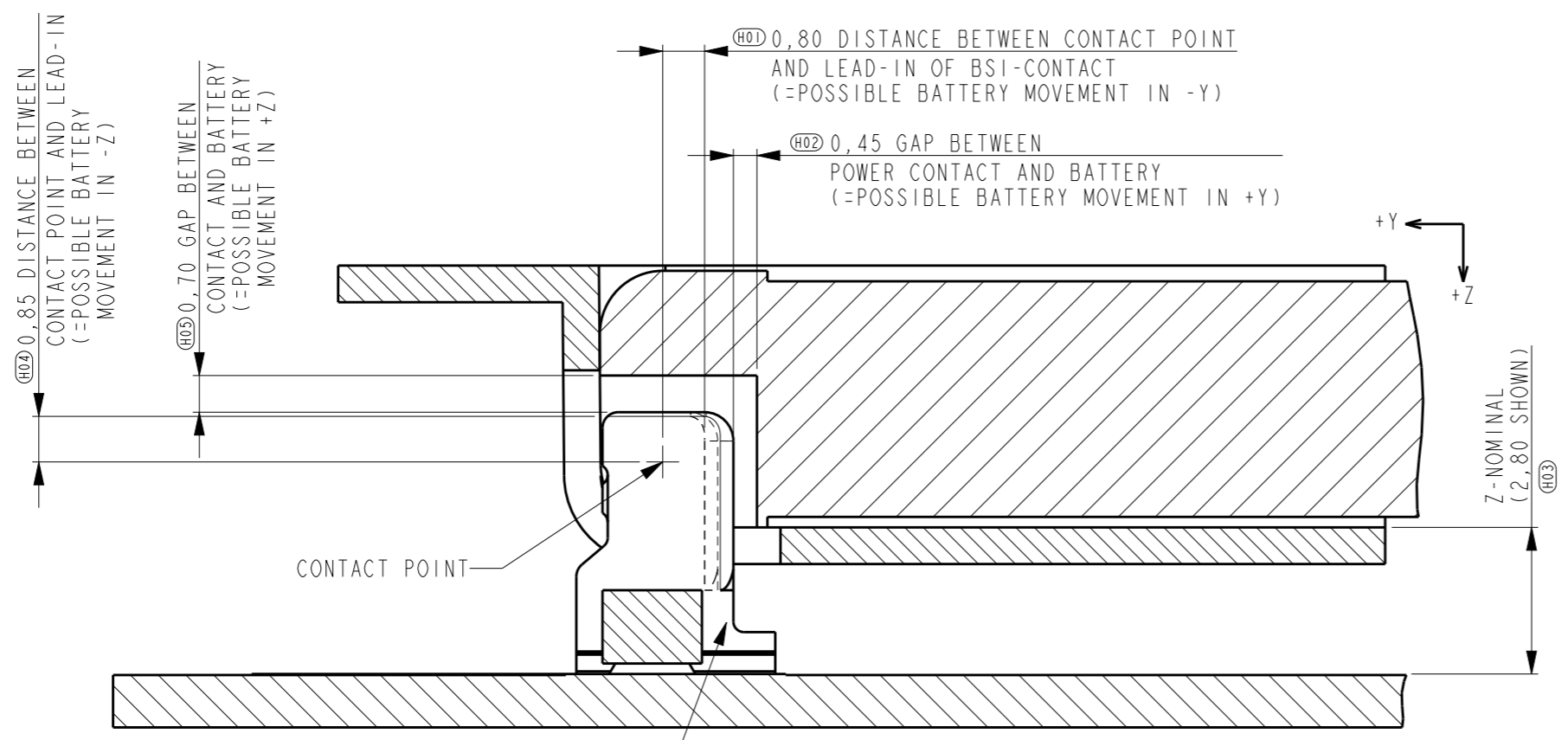
TE Connectivity			
NAME PLUG CONNECTOR UTB, 3 POSITION BATTERY BLOCK			
SIZE A3	CAGE CODE 00779	DRAWING NO C-1857084	RESTRICTED TO
SCALE 10:1		SHEET 1	OF 5
		REV J2	

THIS DRAWING IS UNPUBLISHED. RELEASED FOR PUBLICATION
 © COPYRIGHT - BY - ALL RIGHTS RESERVED.

LOC		DIST		REVISIONS			
P	LTR	DESCRIPTION	DATE	DWN	APVD		
		SEE SHEET 1					



CONNECTOR POSITIONING



WORKING RANGE:
 (PERMITTED BATTERY MOVEMENT)

IN X-DIRECTION ±0,50 SYMMETRICAL

IN Y-DIRECTION 1,25 TOTAL
 IN -Y-DIRECTION 0,80 (BATTERY LENGTH TOLERANCE, PHONE CASE TOLERANCE, ASSEMBLY TOLERANCE, PHONE FLEXIBILITY)
 IN +Y-DIRECTION 0,45 (ASSEMBLY TOLERANCE, PHONE FLEXIBILITY)

IN Z-DIRECTION 1,55 TOTAL
 IN -Z-DIRECTION 0,85 (BATTERY FRONT TOLERANCE, PHONE CASE TOLERANCE, PHONE FLEXIBILITY)
 IN +Z-DIRECTION 0,70 (SEE TABLE SHEET 4) (PHONE CASE TOLERANCE, PHONE FLEXIBILITY)

THESE VALUES APPLY IF Z-NOMINAL IS IN THE CENTER OF THE RANGE SPECIFIED FOR THE PLUG (AS SHOWN HERE).

WORKING RANGE

SCALE 8:1

OBSOLETE

THIS DRAWING IS A CONTROLLED DOCUMENT.		DWN J. Tuin 29 APR 2005	TE Connectivity	
		CHK J. Tuin 29 APR 2005		
		APVD D. Halberstadt 29 APR 2005	NAME	
DIMENSIONS: mm		PRODUCT SPEC 108-19276	PLUG CONNECTOR UTB, 3 POSITION BATTERY BLOCK	
TOLERANCES UNLESS OTHERWISE SPECIFIED:		APPLICATION SPEC -	RESTRICTED TO	
0 PLC ±-		WEIGHT -	SIZE A3	CAGE CODE 00779
1 PLC ±0,2		DRAWING NO C-1857084		
2 PLC ±0,1		SCALE 10:1		
3 PLC ±-		SHEET 2 OF 5		
4 PLC ±-		REV J2		
ANGLES ±-		CUSTOMER DRAWING		
FINISH -				

4

3

2

1

THIS DRAWING IS UNPUBLISHED.

RELEASED FOR PUBLICATION

© COPYRIGHT - BY - ALL RIGHTS RESERVED.

LOC	DIST	REVISIONS					
H	-	P	LTR	DESCRIPTION	DATE	DWN	APVD
			-	SEE SHEET 1	-	-	-

NMP CODE	PART NUMBER	Z-NOMINAL RANGE	DIMENSION "A"	DIMENSION "B"	MASS [mg]	+Z DIRECTION MOVEMENT (REF SHEET 3)
5469254	1-1857084-7	>1,7 (1,8 - 2,2)	4,20	1,60	159	+0,40
5469741	2-1857084-0	>2,0 (2,1 - 2,5)	4,50	1,60	174	+0,70
5469743	2-1857084-5	>2,5 (2,6 - 3,0)	5,00	1,60	189	+0,70
5469745	3-1857084-0	>3,0 (3,1 - 3,5)	5,50	2,60	219	+0,70
5469747	3-1857084-5	>3,5 (3,6 - 4,0)	6,00	2,60	235	+0,70
5469749	4-1857084-0	>4,0 (4,1 - 4,5)	6,50	2,60	251	+0,70

1-1857084-7 (4,20) (0.0)

2-1857084-0 (4,50) (0.0)

2-1857084-5 (5,00) (0.0)

3-1857084-0 (5,50) (0.0)

3-1857084-5 (6,00) (0.0)


4-1857084-0 (6,50) (0.0)

PRODUCT SELECTION

OBSOLETE

2-1857084-0

3-1857084-5

THIS DRAWING IS A CONTROLLED DOCUMENT.		DWN 29 APR 2005 J. Tuin		 TE Connectivity	
DIMENSIONS: mm		CHK 29 APR 2005 J. Tuin			
TOLERANCES UNLESS OTHERWISE SPECIFIED:		APVD 29 APR 2005 D. Halberstadt		NAME	
0 PLC ±-		PRODUCT SPEC		PLUG CONNECTOR	
1 PLC ±0,2		108-19276		UTB, 3 POSITION	
2 PLC ±0,1		APPLICATION SPEC		BATTERY BLOCK	
3 PLC ±-		-		SIZE	CAGE CODE
4 PLC ±-		WEIGHT		A3	00779
ANGLES ±-		CUSTOMER DRAWING		DRAWING NO	RESTRICTED TO
FINISH		SCALE		C=1857084	
-		10:1		SHEET 3 OF 5	
		REV		J2	

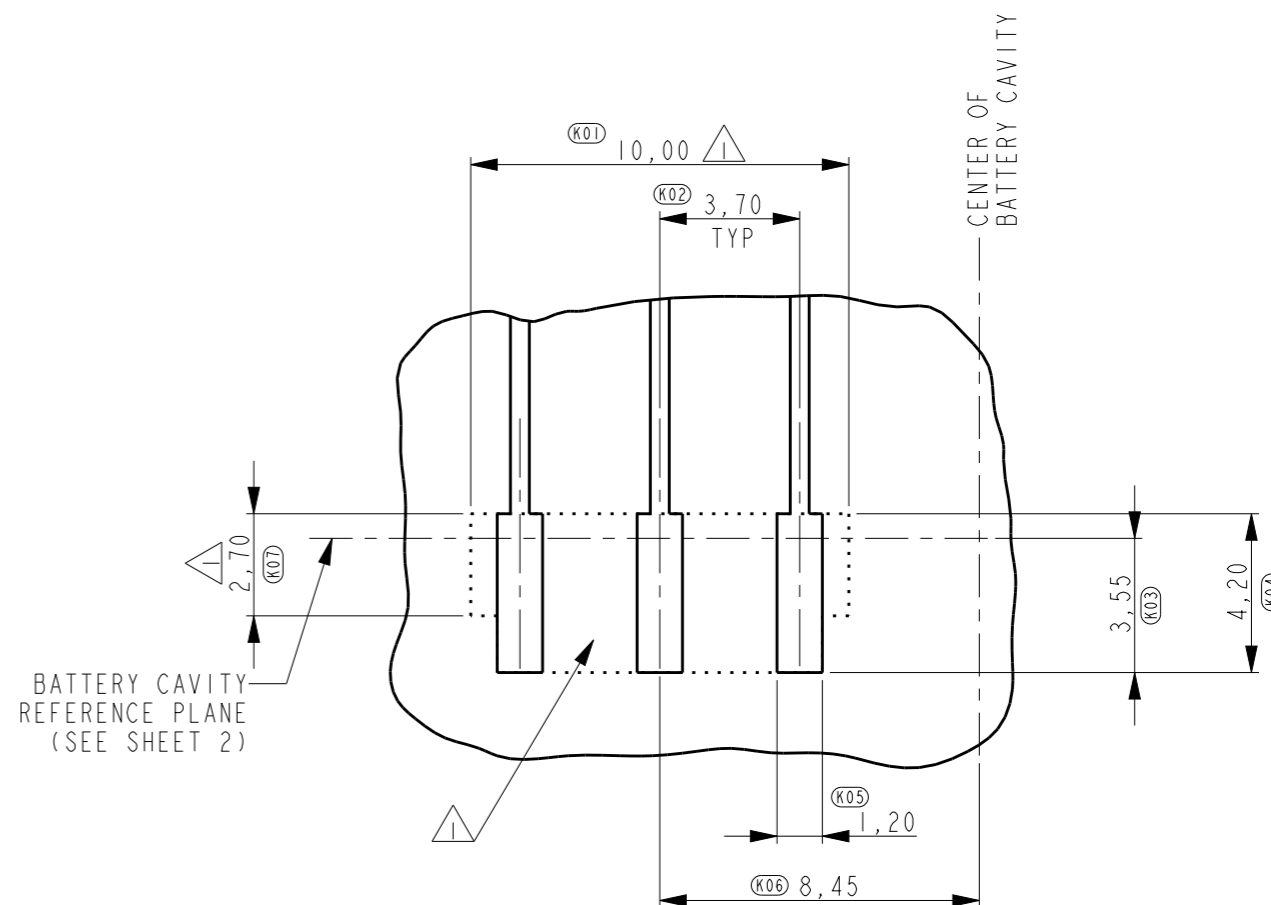
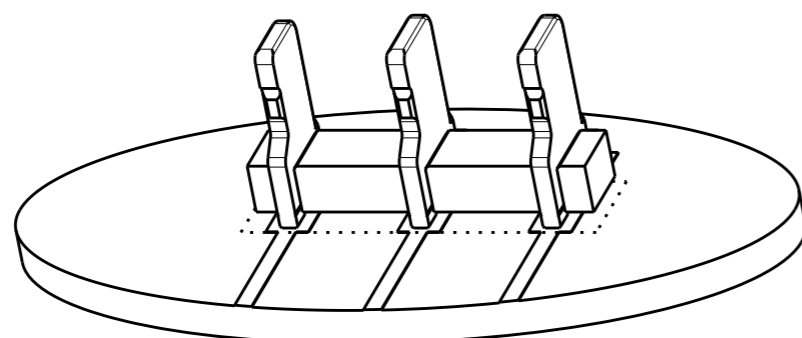
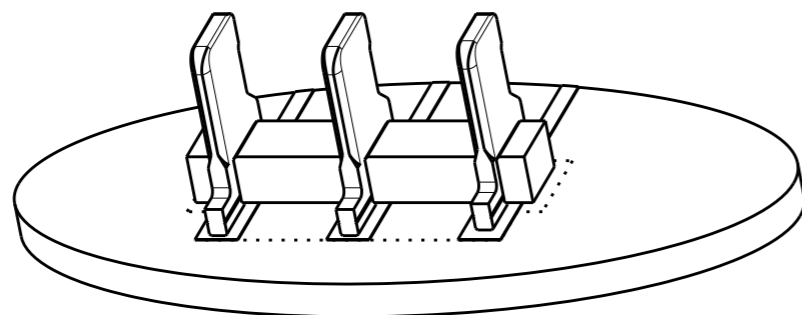
1470-19 (3/11)

THIS DRAWING IS UNPUBLISHED.

RELEASED FOR PUBLICATION

© COPYRIGHT - BY - ALL RIGHTS RESERVED.


LOC	DIST	REVISIONS			
P	LTR	DESCRIPTION	DATE	DWN	APVD
H	-	SEE SHEET 1	-	-	-



OBSOLETE

NOTES:

△ AREA FREE OF SOLDER SCREEN.

THIS DRAWING IS A CONTROLLED DOCUMENT.		DWN J. Tuin 29 APR 2005	 TE Connectivity			
DIMENSIONS: mm		CHK J. Tuin 29 APR 2005				
TOLERANCES UNLESS OTHERWISE SPECIFIED:		APVD D. Halberstadt 29 APR 2005	NAME PLUG CONNECTOR UTB, 3 POSITION BATTERY BLOCK			
0 PLC ±- 1 PLC ±0,2 2 PLC ±0,1 3 PLC ±- 4 PLC ±- ANGLES ±-		PRODUCT SPEC 108-19276	SIZE A3	CAGE CODE 00779	DRAWING NO C-1857084	RESTRICTED TO
MATERIAL -	FINISH -	APPLICATION SPEC -	WEIGHT -	CUSTOMER DRAWING		
		SCALE 10:1	SHEET 4	OF 5	REV J2	

4

3

2

1

THIS DRAWING IS UNPUBLISHED.

RELEASED FOR PUBLICATION

© COPYRIGHT - BY - ALL RIGHTS RESERVED.

LOC	DIST	REVISIONS					
H	-	P	LTR	DESCRIPTION	DATE	DWN	APVD
		-		SEE SHEET 1	-	-	-

Technical drawing of a plug connector showing top, side, and cross-sectional views with dimensions and tolerances:

- Top view dimensions: $1,1 \pm 0,2$ (L01), $2,0$ (L02), $4,0$ (L03), $8,0$ (L08), $11,5$ (L05), $13,25 \pm 0,10$ (L06), $24,0$ (L07), $\pm 0,3$.
- Side view dimensions: $0,4$ (M02), $0,4$ (M03).
- Cross-sectional view dimensions: $0,4$ (M01), $\pm 0,3$.
- Other dimensions: $\phi 1,5$ (L04).

X-1857084-X
UNREEL DIRECTION

PART NUMBER	QUANTITY PER REEL	DIMENSION "D"
1-1857084-7	1300	4,8
2-1857084-0	1300	4,8
2-1857084-5	1300	5,3
3-1857084-0	1000	6,9
3-1857084-5	1000	6,9
4-1857084-0	1000	6,9

NOTES:

1 REEL DIMENSION: 330x101x24,4.

OBSOLETE

DIMENSIONS:		TOLERANCES UNLESS OTHERWISE SPECIFIED:		APPROVALS		TE Connectivity	
mm		0 PLC	±-	DWN	J. Tuin	PLUG CONNECTOR	
		1 PLC	±0,2	CHK	J. Tuin	UTB, 3 POSITION	
		2 PLC	±0,1	APVD	D. Halberstadt	BATTERY BLOCK	
		3 PLC	±-	PRODUCT SPEC	108-19276	SIZE	A3
		4 PLC	±-	APPLICATION SPEC	-	CAGE CODE	00779
		ANGLES	±-	WEIGHT	-	DRAWING NO	C-1857084
MATERIAL		FINISH	-	CUSTOMER DRAWING		RESTRICTED TO	
				SCALE		SHEET	5 OF 5
				10:1		REV	J2

1470-19 (3/11)