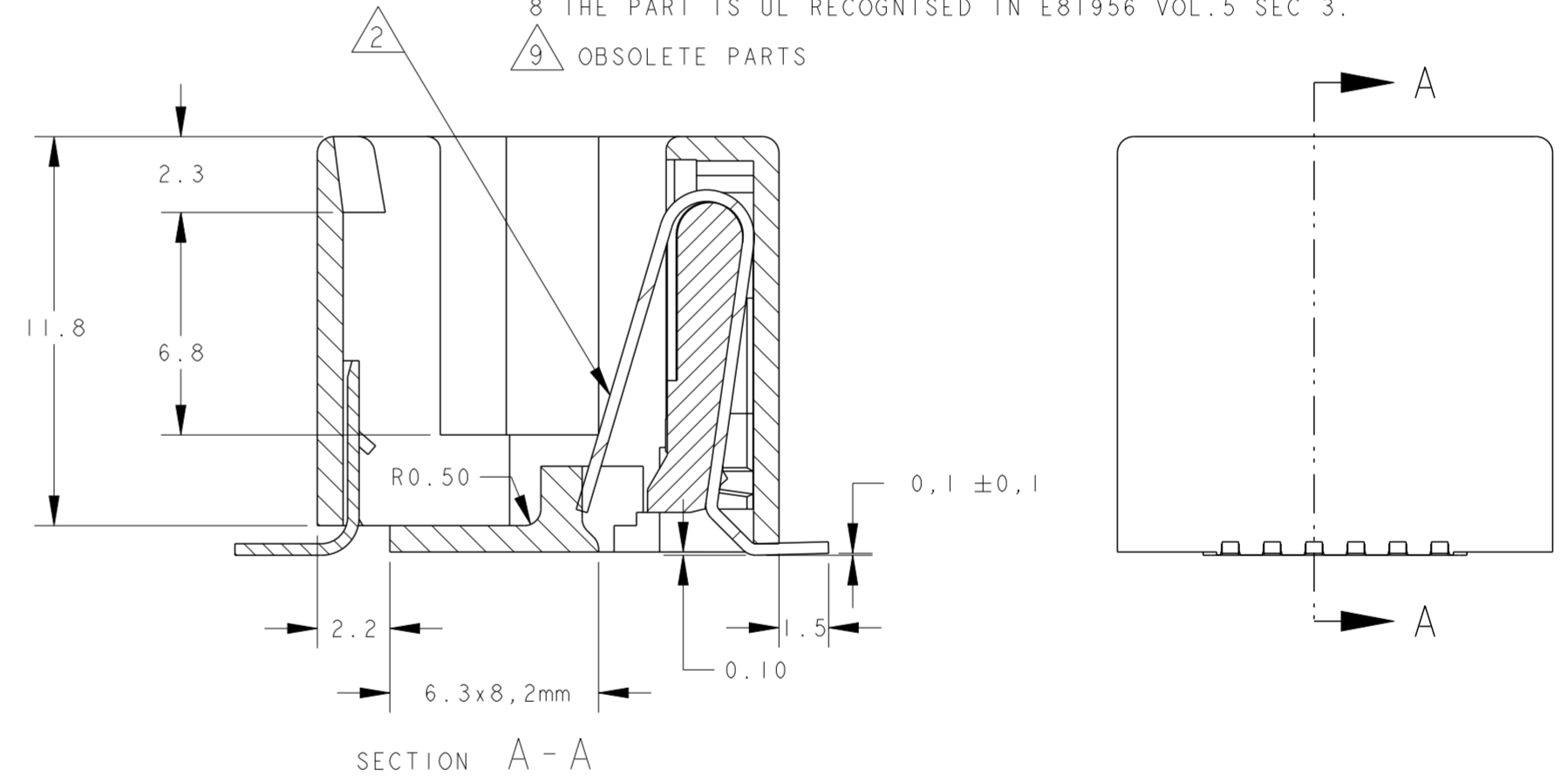
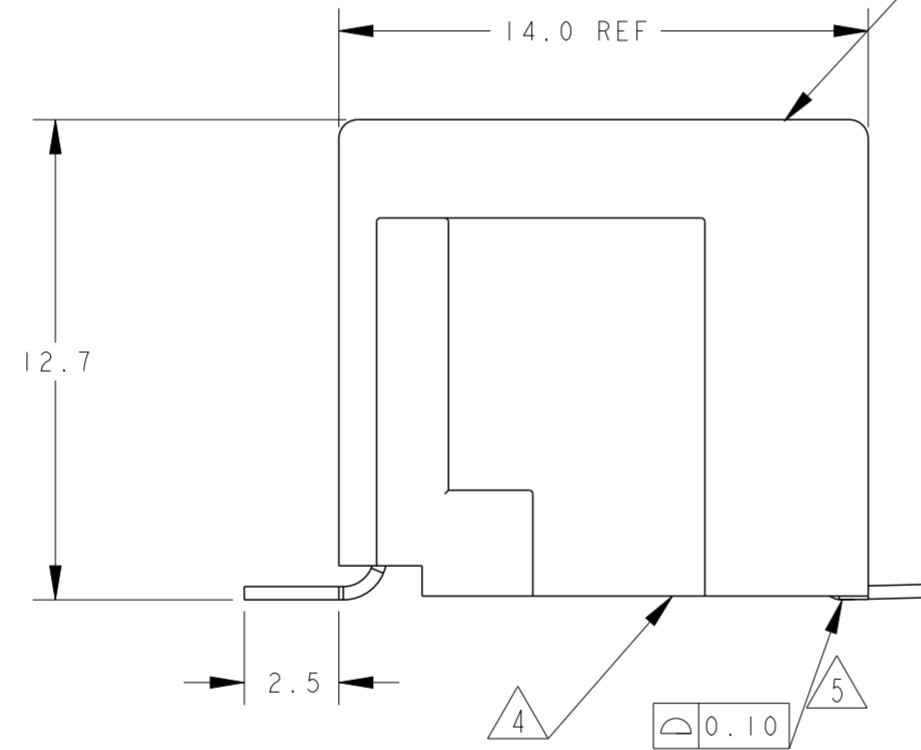
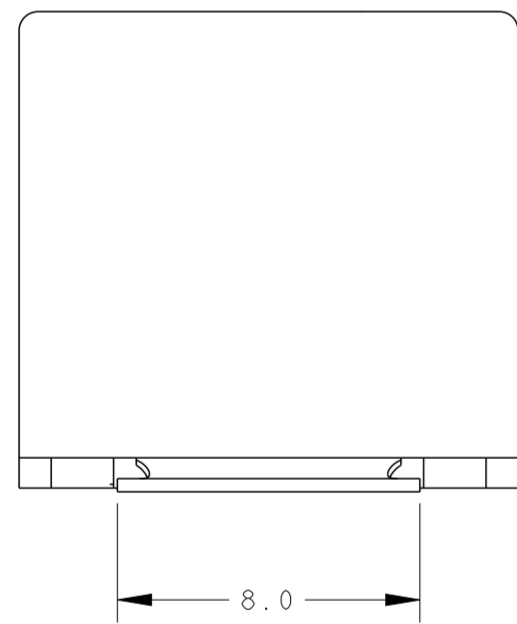
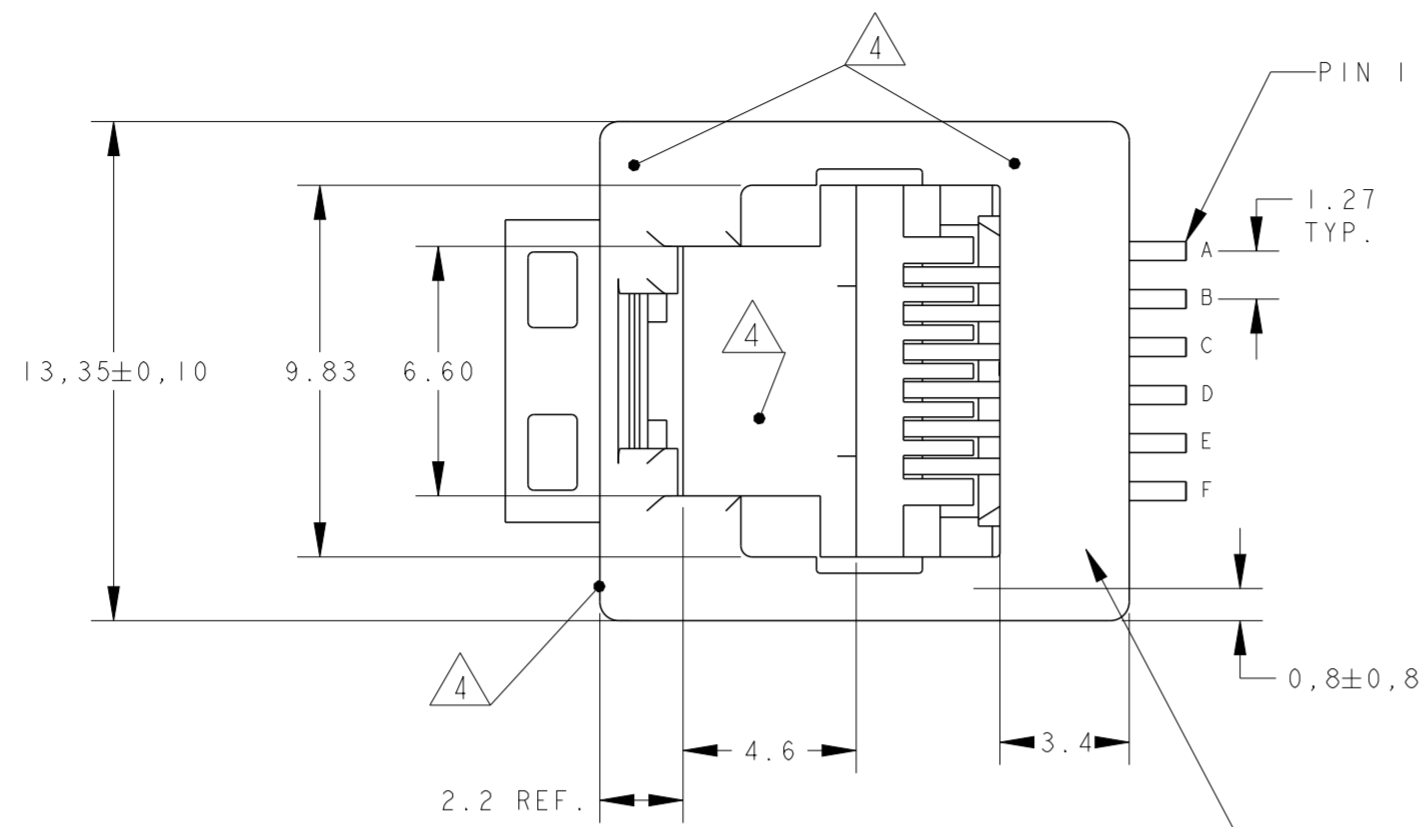
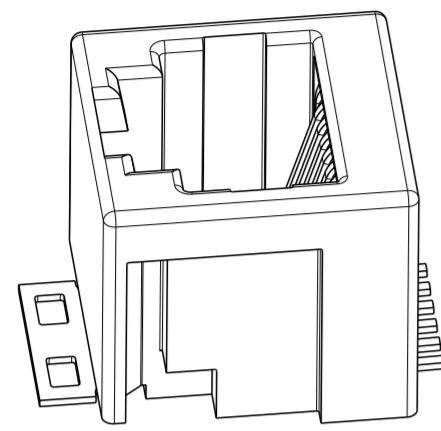


THIS DRAWING IS UNPUBLISHED. RELEASED FOR PUBLICATION  
 © COPYRIGHT - ALL RIGHTS RESERVED.

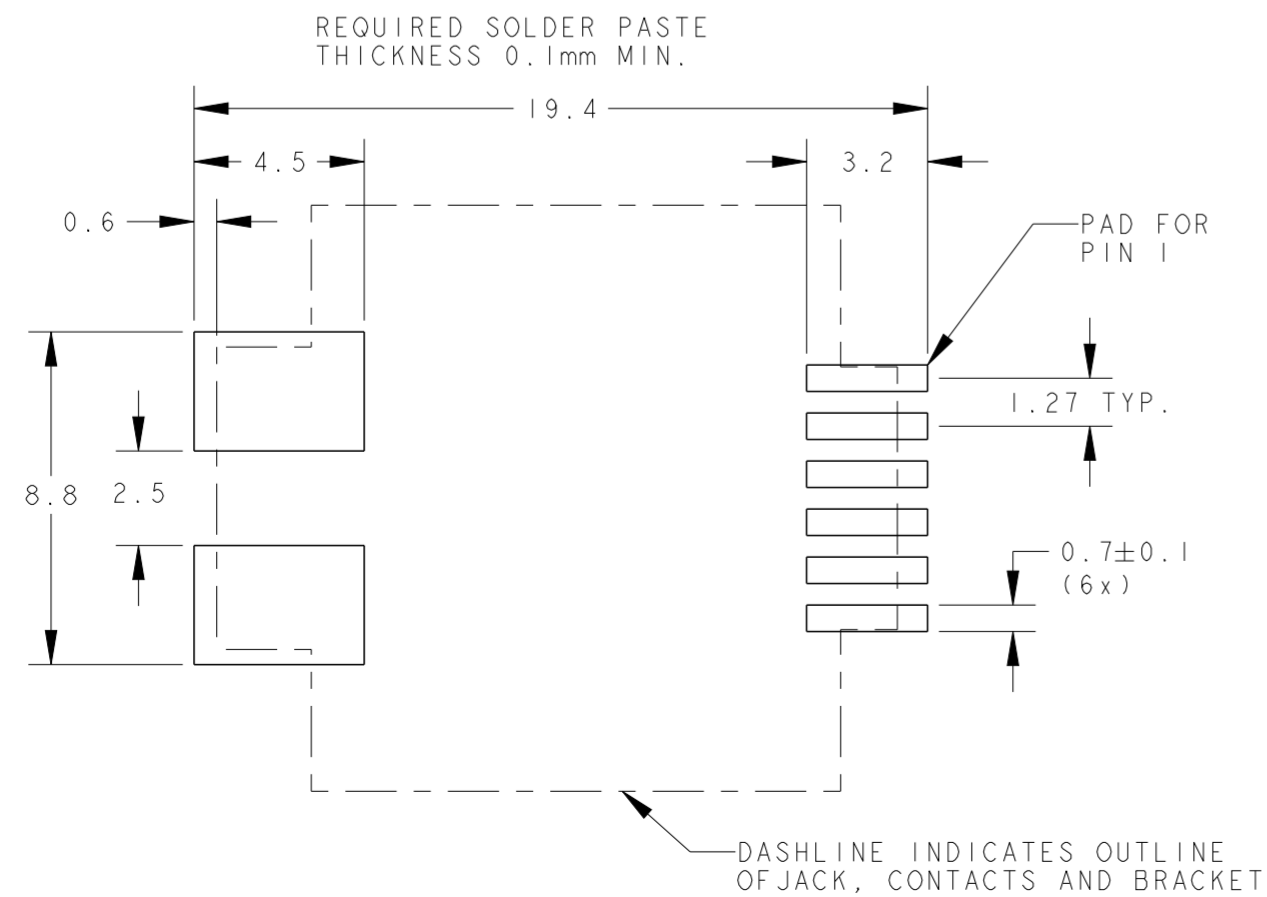
LOC		DIST		REVISIONS			
P	LTR	DESCRIPTION		DATE	DWN	APVD	
E		HOUSING RIB STRENGTHENED, RAWMATERIAL CHANGED TO PA4T		05JAN2012	PS	RRP	
F		ECO-16-001320		13JUN2016	AD	SH	
F1		REVISED PER ECN-22-180673		09NOV2022	AB	SZ	
F2		REVISED PER ECN-22-188308		05DEC2022	AB	SZ	

NOTES:

- 1 TOLERANCES UNLESS OTHERWISE SPECIFIED:  $\pm 0,15$
- 2 CONTACT PLATING:  
 OVERALL: Ni 1.27  $\mu\text{m}$  MIN. ALL OVER THE CONTACTS  
 SOLDER ZONE: Sn 3.5-5.0  $\mu\text{m}$  ON THE SOLDER ZONE OF THE CONTACT  
 MATING ZONE: PLATING CONFIRMS TO PRODUCT REQUIREMENTS AS PER SPECIFICATION 108-19117
- 3 MATERIALS:  
 -HOUSING: 30% G.F. LCP. COLOR BLACK, UL 94V-0.  
 -CONTACTS: PHOSPHOR BRONZE.  
 -SOLDER BRACKET: TINPLATED BRASS WITH NICKEL UNDERPLATE.
- 4 SURFACE CAN BE USED FOR PICKING THE MODULAR JACK WITH, TYPE II SMD MACHINE.
- 5 COPLANARITY MEASURED AT HEEL OF CONTACTS.
- 6 TAPE AND REEL PACKAGING ACCORDIND TO EIA 481-3 SPECIFICATIONS.
- 7 CONTACT PLATING:  
 0.76  $\mu\text{m}$  MIN. GOLD SELECTIVE IN CONTACT AREA.  
 OVER 1,27  $\mu\text{m}$  MIN. NICKEL.  
 3,5-5,0  $\mu\text{m}$  MIN. MATTE TIN ON SOLDER TINES.
- 8 THE PART IS UL RECOGNISED IN E81956 VOL.5 SEC 3.
- 9 OBSOLETE PARTS



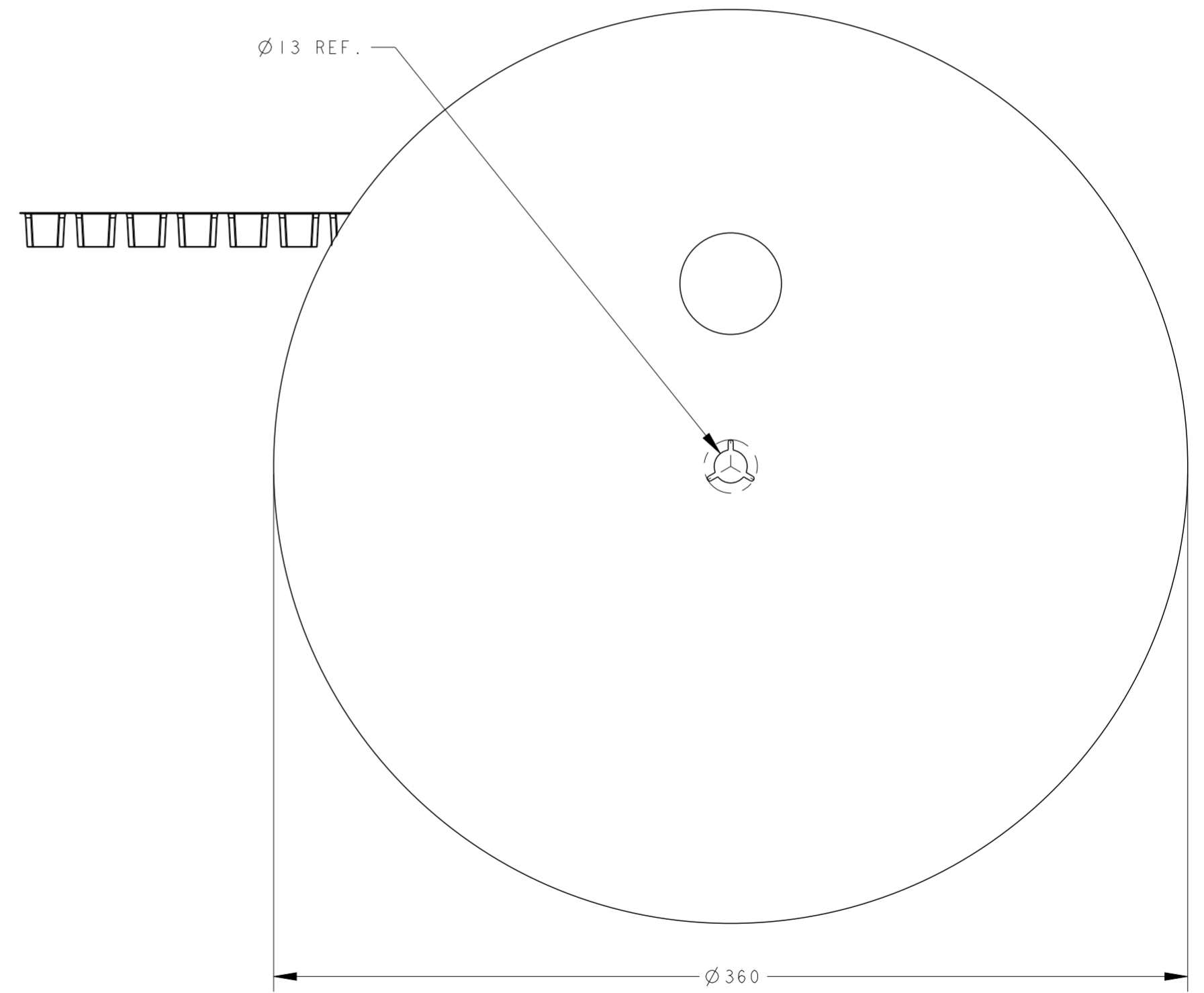
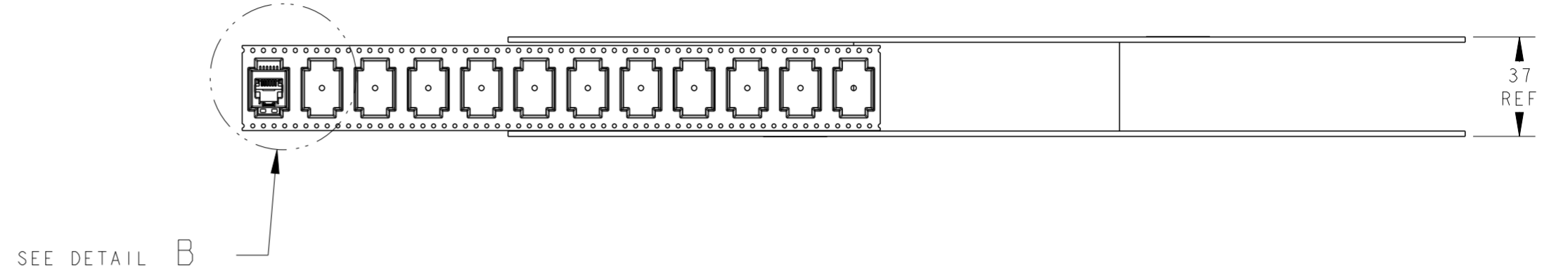
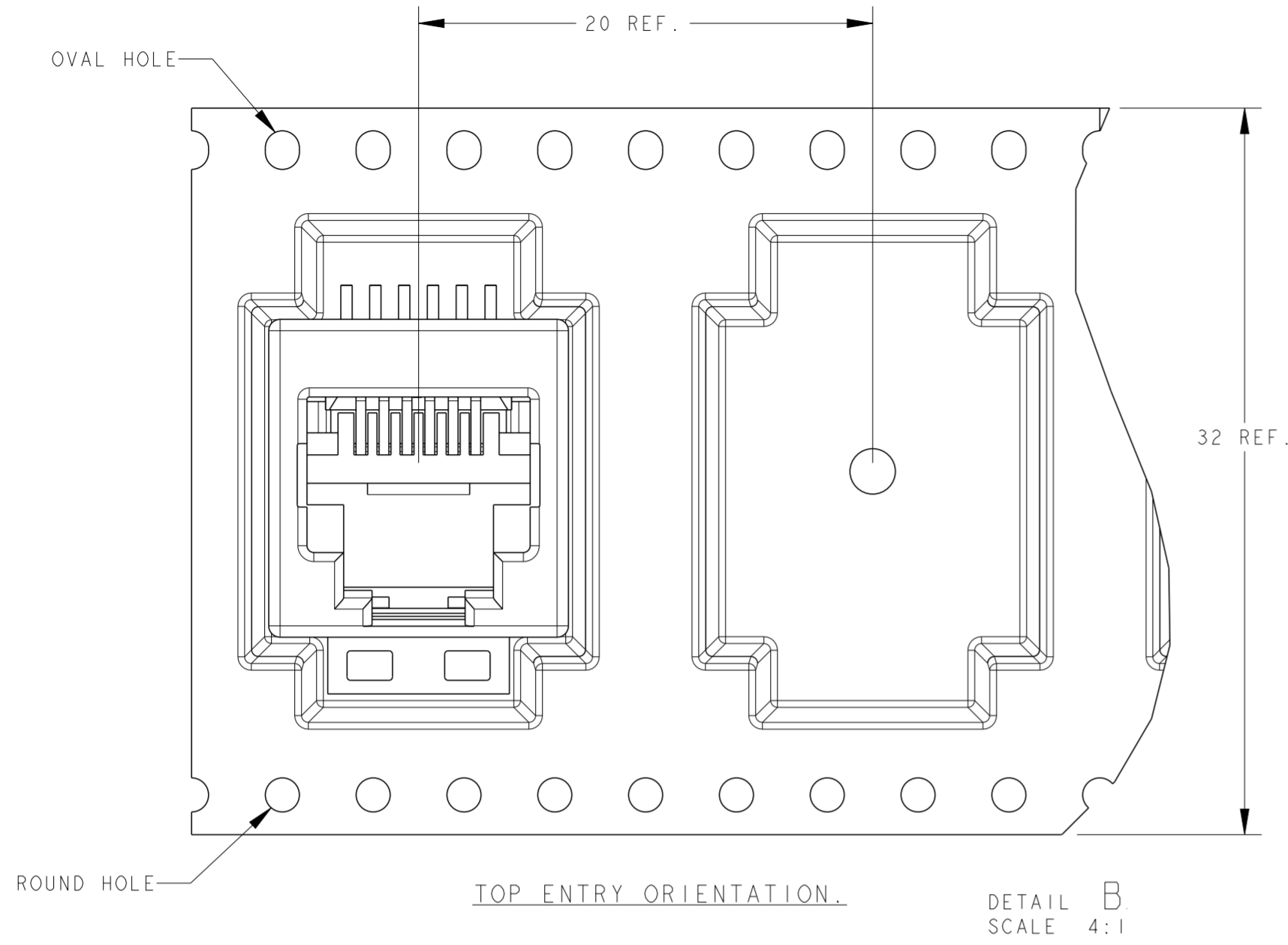
PRINTED CIRCUIT BOARD LAYOUT



6 POS./6 CONT.	300 PCS ON $\varnothing 360\text{mm}$ OD REEL. TOP ENTRY ORIENTATION PER DETAIL B	1857381-2 1857381-1
REMARKS	FINISH	PACKAGING
THIS DRAWING IS A CONTROLLED DOCUMENT.		
DIMENSIONS: mm	TOLERANCES UNLESS OTHERWISE SPECIFIED: 0 PLC $\pm 0.2$ 1 PLC $\pm 0.1$ 2 PLC $\pm 0.05$ 3 PLC $\pm$ 4 PLC $\pm$ ANGLES $\pm$	DWN: 04 NOV 2005 CHK: J.V.D. HEIJDEN M. OPPER APVD: 04 NOV 2005 J. BROEKSTEG.
MATERIAL SEE NOTE 3.	PRODUCT SPEC 108-19117 APPLICATION SPEC 114-19041 WEIGHT 1,83 gr	NAME MODULAR JACK ON BOARD SMT 6/6 POSITION VERSION.
CUSTOMER DRAWING	SCALE 1:1	SHEET 1 OF 2 REV F2

THIS DRAWING IS UNPUBLISHED. RELEASED FOR PUBLICATION  
 © COPYRIGHT - ALL RIGHTS RESERVED.

LOC	DIST	REVISIONS					
IR	-	P	LTR	DESCRIPTION	DATE	DWN	APVD
		-		See sheet 1	-	-	-



THIS DRAWING IS A CONTROLLED DOCUMENT.		DWN	04 NOV 2005		<b>STE</b> TE Connectivity
		CHK	04 NOV 2005		
		APVD	04 NOV 2005		
		J. BROEKSTEG.			
DIMENSIONS:		TOLERANCES UNLESS OTHERWISE SPECIFIED:		NAME	
mm	0 PLC ±0.2	1 PLC ±0.1		MODULAR JACK ON BOARD SMT	
	2 PLC ±0.05	3 PLC ±		6/6 POSITION VERSION.	
	4 PLC ±	ANGLES ±		-	
MATERIAL	FINISH	PRODUCT SPEC		SIZE	
-	-	APPLICATION SPEC		A2	
		WEIGHT		CAGE CODE	
		-		DRAWING NO	
		CUSTOMER DRAWING		C-1857381	
		SCALE		RESTRICTED TO	
		1:1		-	
		SHEET		REV	
		2 OF 2		F2	