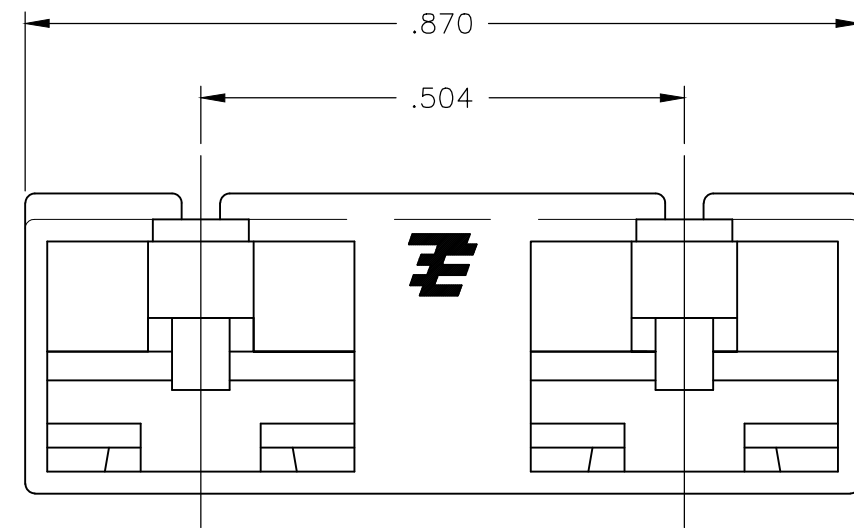
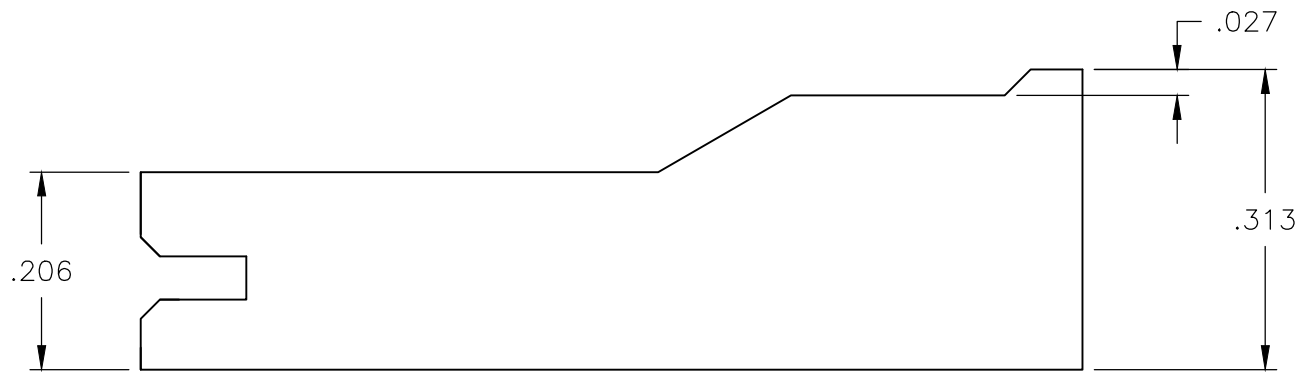
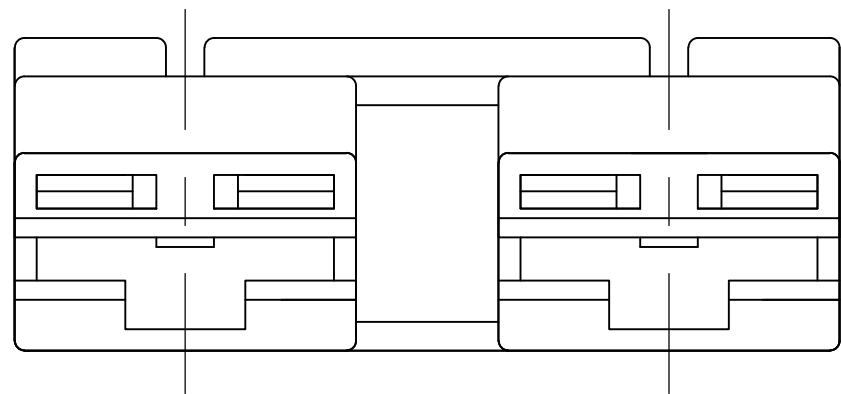
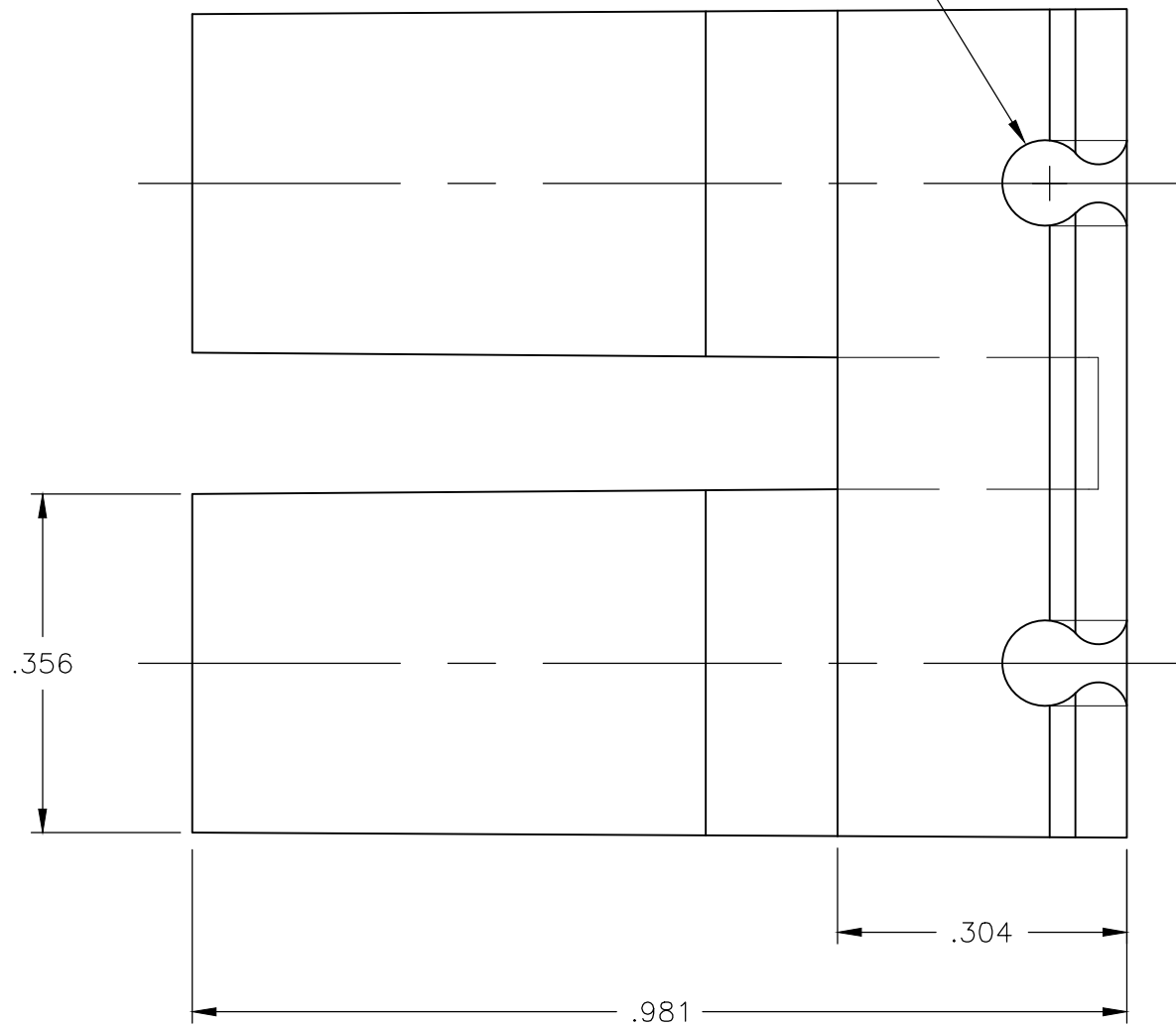


THIS DRAWING IS UNPUBLISHED. RELEASED FOR PUBLICATION
 © COPYRIGHT - By -TE ALL RIGHTS RESERVED.

REVISIONS					
P	LTR	DESCRIPTION	DATE	DWN	APVD
	A9	REVISED PER ECR-18-018117	12MAR2019	BW	DS

- 1 USE WITH TERMINAL 63609.
- 2 OBSOLETE PARTS

WIRE RETENTION FEATURE
 FOR USE WITH 22 AWG, UL-1569 WIRE



	NATURAL	66 NYLON V0, GWT NATURAL	1969295-4
SUPERSEDED BY 1969295-4	NATURAL	6/6 NYLON, V-2	1969295-3
	RED	6/6 NYLON, V-0	1969295-2
SUPERSEDED BY 1969295-4	NATURAL	6/6 NYLON, V-0	1969295-1
	COLOR	MATERIAL	PART NO

THIS DRAWING IS A CONTROLLED DOCUMENT.		DWN S SCHLEGEL 7/7/09																				
DIMENSIONS: INCHES		CHK P DESANTIS 7/7/09																				
TOLERANCES UNLESS OTHERWISE SPECIFIED:		APVD P DESANTIS 7/7/09	NAME HOUSING, RECPT, 2 CIRCUIT, .250 SERIES, SPECIAL																			
<table border="0"> <tr><td>0 PLC</td><td>±</td><td>-</td></tr> <tr><td>1 PLC</td><td>±</td><td>-</td></tr> <tr><td>2 PLC</td><td>±</td><td>-</td></tr> <tr><td>3 PLC</td><td>±</td><td>.010</td></tr> <tr><td>4 PLC</td><td>±</td><td>-</td></tr> <tr><td>ANGLES</td><td>±</td><td>1°</td></tr> </table>		0 PLC	±	-	1 PLC	±	-	2 PLC	±	-	3 PLC	±	.010	4 PLC	±	-	ANGLES	±	1°	PRODUCT SPEC -	SIZE A2	CAGE CODE 00779
0 PLC	±	-																				
1 PLC	±	-																				
2 PLC	±	-																				
3 PLC	±	.010																				
4 PLC	±	-																				
ANGLES	±	1°																				
MATERIAL -	FINISH -	APPLICATION SPEC -	DRAWING NO C=1969295	RESTRICTED TO -																		
CUSTOMER DRAWING			SCALE 6:1	SHEET 1 of 1																		
			REV A9																			