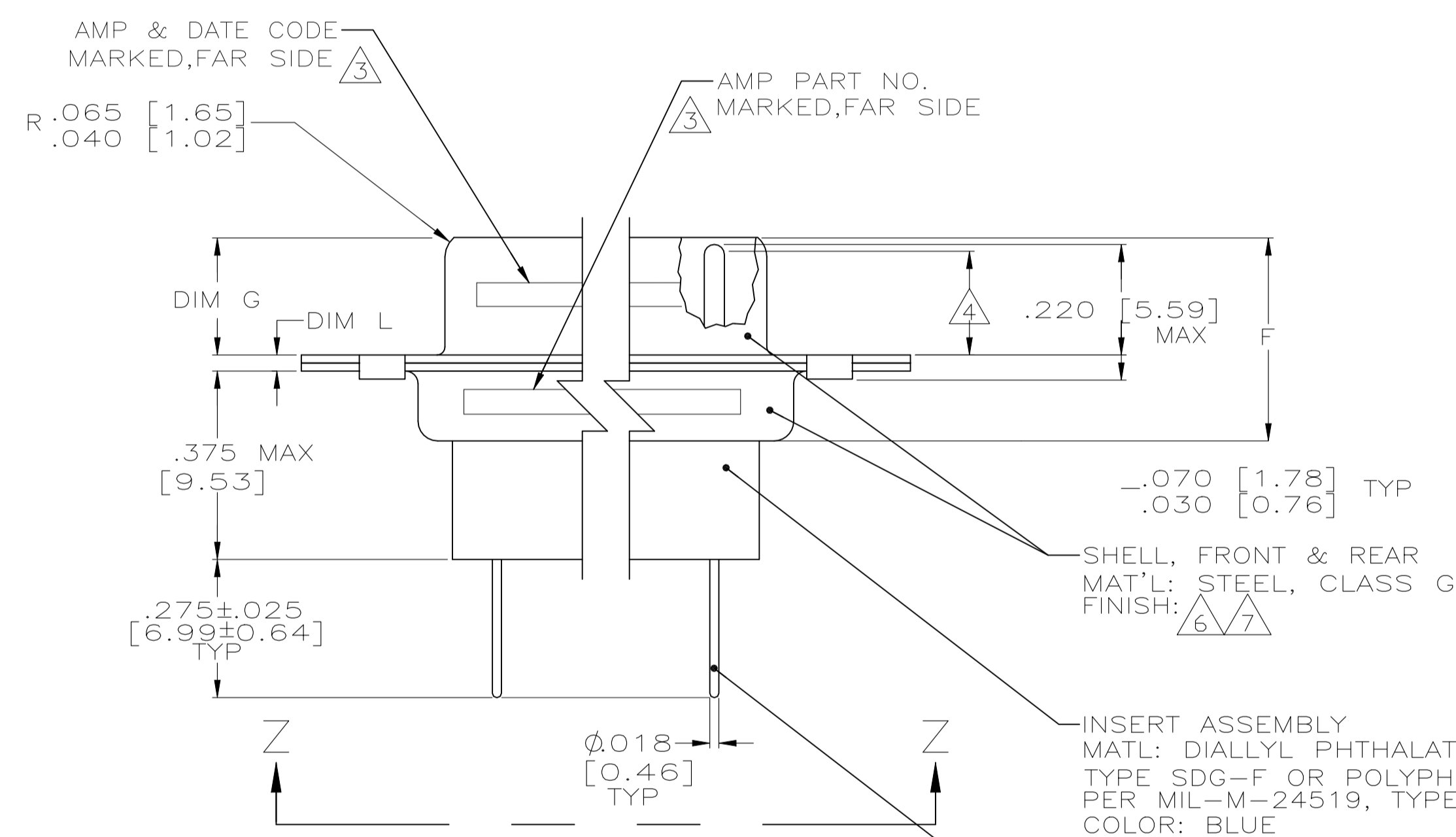
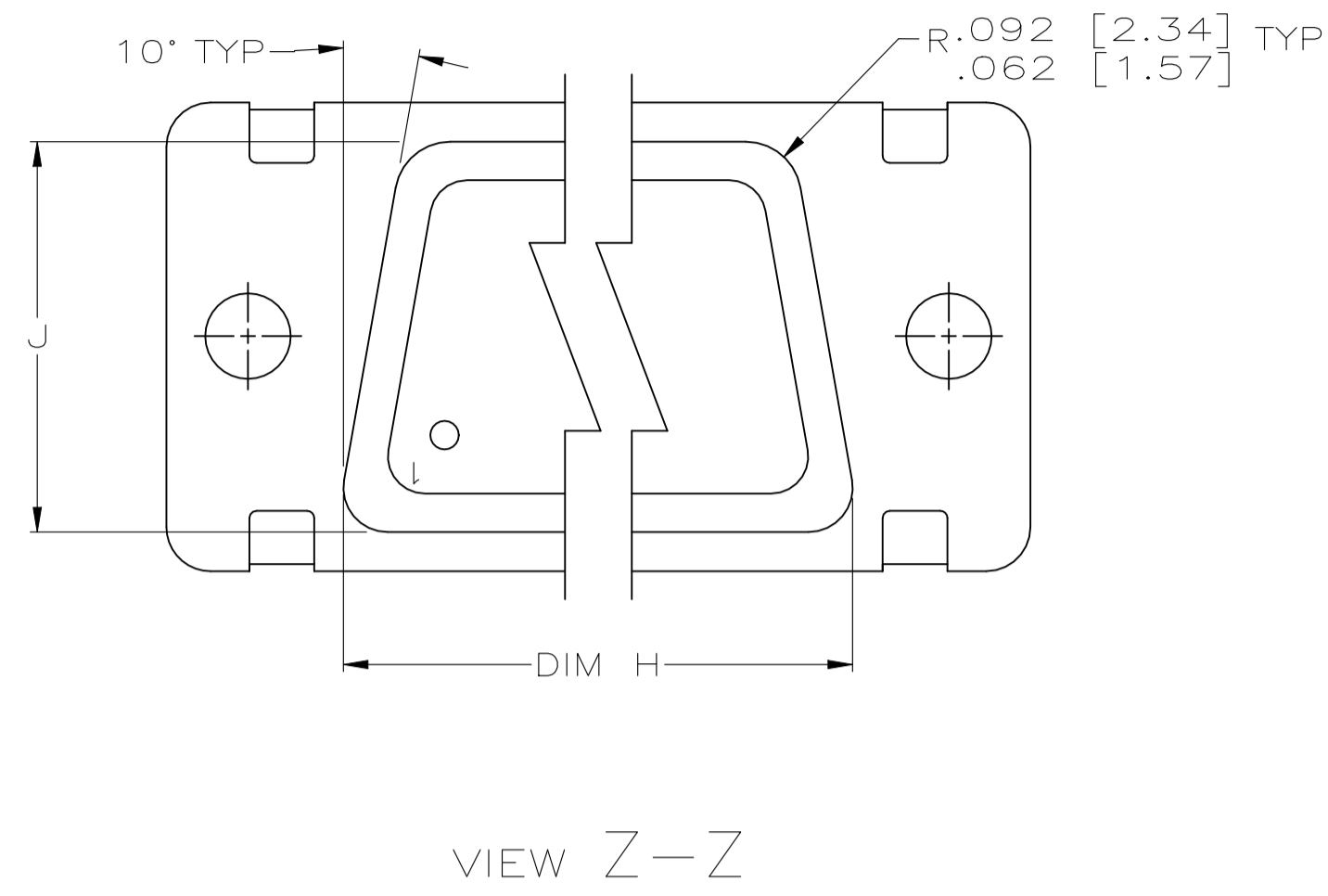
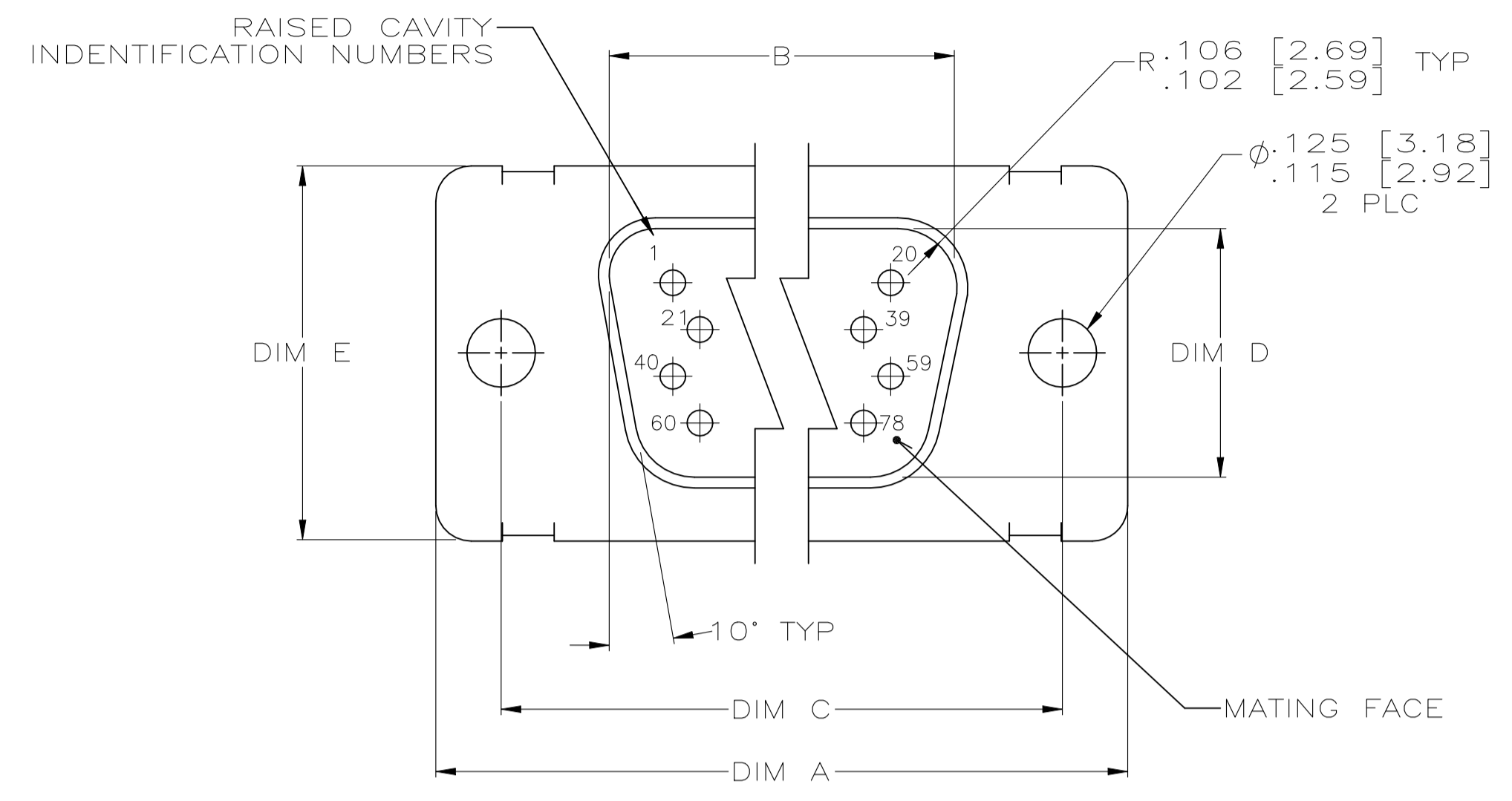
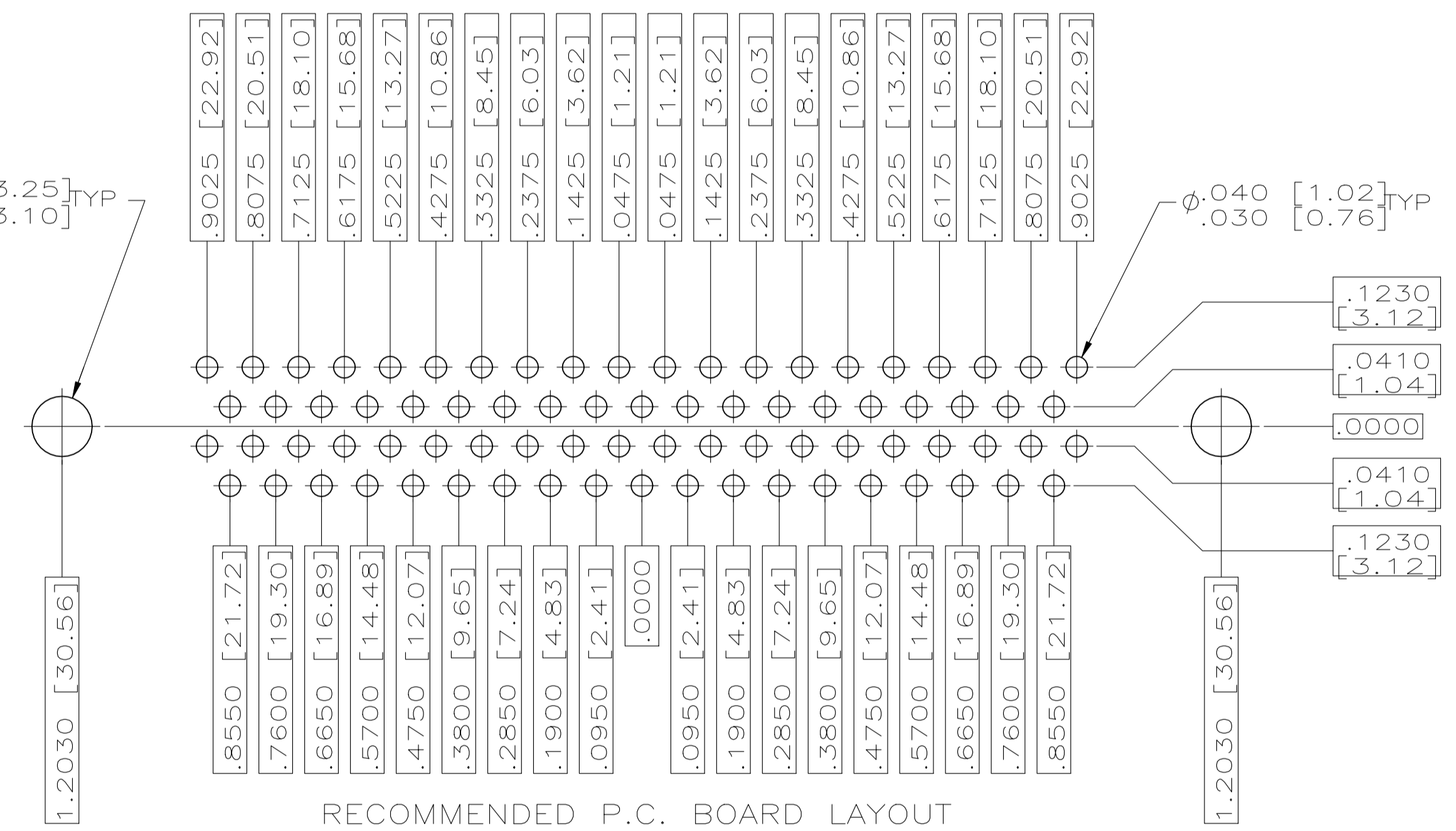


REVISIONS				
P	LTR	DESCRIPTION	DATE	APPROV
G		REVISED PER ECN-24-266865	20MAY2024	PE DS

WARNING - THIS DOCUMENT CONTAINS TECHNOLOGY WHOSE EXPORT IS RESTRICTED BY THE EXPORT ADMINISTRATION REGULATIONS ("EAR") PURSUANT TO 15 C.F.R. PARTS 730-774. VIOLATIONS OF THE EAR ARE SUBJECT TO SEVERE CRIMINAL PENALTIES UNDER THE EXPORT CONTROL REFORM ACT, AS AMENDED (TITLE 50, U.S.C., SEC. 4801, ET SEQ.).



Ø.128 [3.25] TYP  
Ø.122 [3.10] TYP



INSERT ASSEMBLY  
MATL: DIALYL PHTHALATE PER MIL-M-14,  
TYPE SDG-F OR POLYPHENYLENE SULFIDE (PPS)  
PER MIL-M-24519, TYPE GST-40F.  
COLOR: BLUE

CONTACT  
BODY MAT'L: LEADED NICKEL COPPER (PROPRIETARY)  
ALTERNATE MAT'L: COPPER ALLOY PER ASTM-B-197  
FINISH: GOLD PLATED PER MIL-G-45204  
OVER NICKEL PER QQ-N-290

- FOR RECOMMENDED P.C. BOARD LAYOUT. TRUE POSITION TOLERANCE FOR P.C. BOARD LAYOUT IS .010 [0.25] AT MAX MATERIAL CONDITION.
- THIS CONNECTOR ASSEMBLY MEETS THE REQUIREMENTS OF MIL-C-24308 AND MATES WITH ANY RECEPTACLE WITH SAME INSERT ARRANGEMENT.

MARKED WITH .047-.062 [1.19-1.57] HIGH CHARACTERS. FAR SIDE REFERS TO THE WIDE SIDE OF THE KEYSTONE. NEAR SIDE REFERS TO THE NARROW SIDE OF THE KEYSTONE. IF THE FRONT SHELL IS TOO SMALL FOR "AMP", AMP PART NUMBER AND DATE CODE, THEN THE MARKING IS SPLIT AS FOLLOWS:

- AMP PART NUMBER ON REAR SHELL, FAR SIDE.
- "AMP" AND DATE CODE ON FRONT SHELL, FAR SIDE.

REQUIREMENT FOR FULL PIN DIAMETER EXTENSION: .155 [3.94] MIN FOR SHELL SIZE 5.

- REPLACEMENT CONTACT PART NO.: 207683-2
- FINISH: CADMIUM PER QQ-416.
- FINISH: ZINC PLATED PER ASTM-B-633 .000200-.000400 THK WITH SUPPLEMENTARY CHROMATE (Cr3+).
- OBSOLETE ITEMS.

7	.039±010 [0.99±0.25]	.534±010 [13.56±0.25]	2.178±010 [55.32±0.25]	.230±006 [5.84±0.15]	.426±010 [10.82±0.25]	.605±015 [15.37±0.38]	.436 [11.07]	2.406 [61.11]	2.079 [52.81]	2.635±015 [66.93±0.38]	78	211595-1	5	8 5-211595-1
6	.039±010 [0.99±0.25]	.534±010 [13.56±0.25]	2.178±010 [55.32±0.25]	.230±006 [5.84±0.15]	.426±010 [10.82±0.25]	.605±015 [15.37±0.38]	.436 [11.07]	2.406 [61.11]	2.079 [52.81]	2.635±015 [66.93±0.38]	78	211595-1	5	211595-1
	DIM L	DIM J	DIM H	DIM G	DIM F	DIM E	DIM D	DIM C	DIM B	DIM A	NO OF POSITIONS	MARKED AMP P/N	SHELL SIZE	PART NUMBER

THIS DRAWING IS A CONTROLLED DOCUMENT.

DIMENSIONS: INCHES

TOLERANCES UNLESS OTHERWISE SPECIFIED:

0 PLC	±	-
1 PLC	±	-
2 PLC	±	-
3 PLC	±	.005 [0.13]
4 PLC	±	-
ANGLES	±	Ø° 30'

MATERIAL: SEE CALLOUTS

FINISH: SEE CALLOUTS

WEIGHT: 0.000000

CUSTOMER DRAWING

DIN: C.C.THOMAS 8-7-01  
CHK: CHAD BAKER 8-7-01  
APPROV: CHAD BAKER 8-7-01

NAME: HDD22 POSTED PLUG ASSY SIZE 5,78 POSN.,AMPLMITE

SIZE: A1

CAGE CODE: 00779

DRAWING NO: 211595

RESTRICTED TO: -

SCALE: 4:1

SHEET: 1 of 1

REV: G