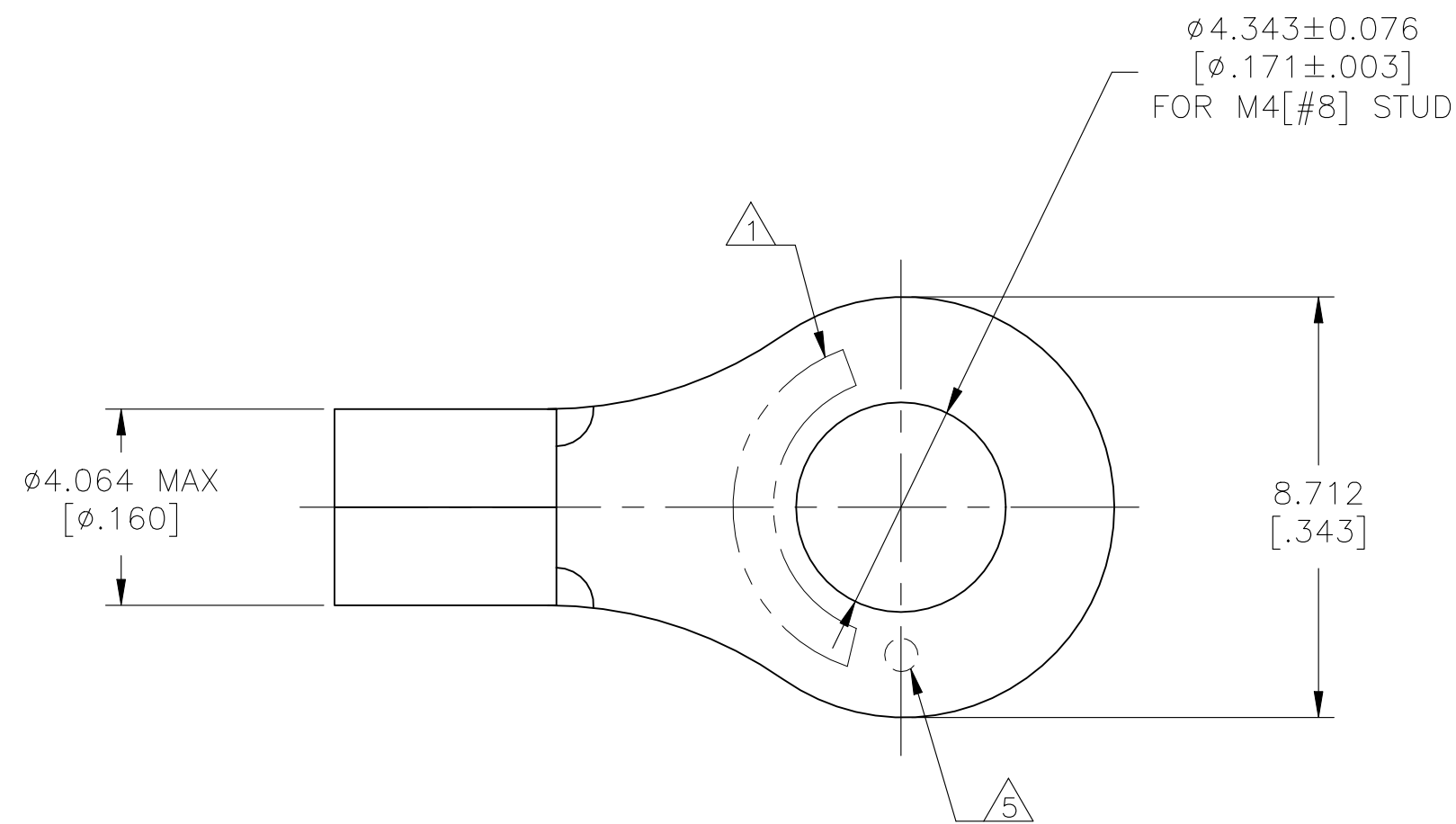
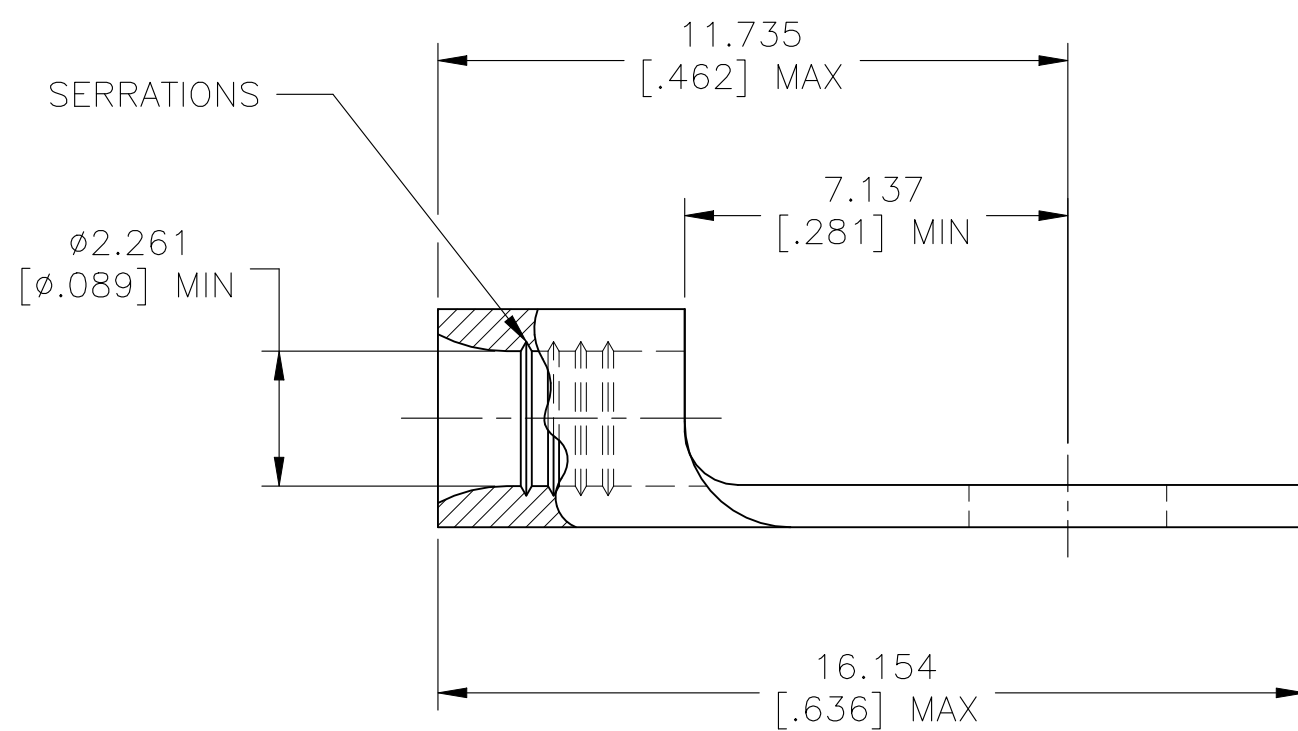


REVISIONS				
P	LTR	DESCRIPTION	DATE	APVD
J		REVISED PER ECR-23-181664	07AUG2023	SA DSC



AMP WIRE RANGE	E13288 Listed
16-14 AWG STRANDED	16-14 AWG STRANDED

LR7189 Certified
NOT CERTIFIED



- ① STAMP AMP 16-14* APPROX AS SHOWN
- ② MATERIAL: COPPER PER ASTM B152, ANNEALED
- ③ FINISH: TIN PLATE 0.00254[.000100] MIN EXT THK PER ASTM B545
- 4 BODY MATERIAL THK: 0.787±0.051[.031±.002]
- ⑤ DIMPLE STAMP MARK OPTIONAL

1000	LOOSE PIECE	30696
QUANTITY	PACKAGE TYPE	PART NUMBER

AMP INCORPORATED CUSTOMER SERVICE SYSTEMS		MAX RECOMMENDED OPERATING TEMPERATURE: 170°C [338° F]	THIS DRAWING IS A CONTROLLED DOCUMENT.		DWN TA BRINKMAN 2-4-93	TE Connectivity
		VOLTAGE RATING: NOT APPLICABLE	DIMENSIONS: mm [INCHES]	TOLERANCES UNLESS OTHERWISE SPECIFIED:	CHK DA PATTERSON 2-4-93	
FOR ADDITIONAL PRODUCT INFORMATION OR COPIES OF DRAWINGS AND TECHNICAL DOCUMENTS	PRODUCT INFORMATION CENTER 1-800-522-6752	WIRE CROSS SECTIONAL AREA RANGE: 1.04-2.62mm² [2050-5180] CIR MILS STRANDED		0 PLC ± -	1 PLC ± -	NAME DE MILLER 2-4-93
FOR APPLICATION TOOLING INFORMATION	TOOLING ASSISTANCE CENTER 1-800-722-1111	THIS DRAWING IS A CONTROLLED DOCUMENT FOR AMP INCORPORATED. IT IS SUBJECT TO CHANGE AND THE CONTROLLING ENGINEERING ORGANIZATION SHOULD BE CONTACTED FOR THE LATEST REVISION.		2 PLC ± -	3 PLC ± 0.127[.005]	4 PLC ± -
FOR ORDER ENTRY	1-800-526-5142	MATERIAL ②	FINISH ③	APVD DE MILLER 2-4-93	APPLICATION SPEC	SIZE A2
				WEIGHT -	CAGE CODE 00779	DRAWING NO C-30696
				CUSTOMER DRAWING		RESTRICTED TO -
				SCALE 8:1	SHEET 1 of 1	REV J