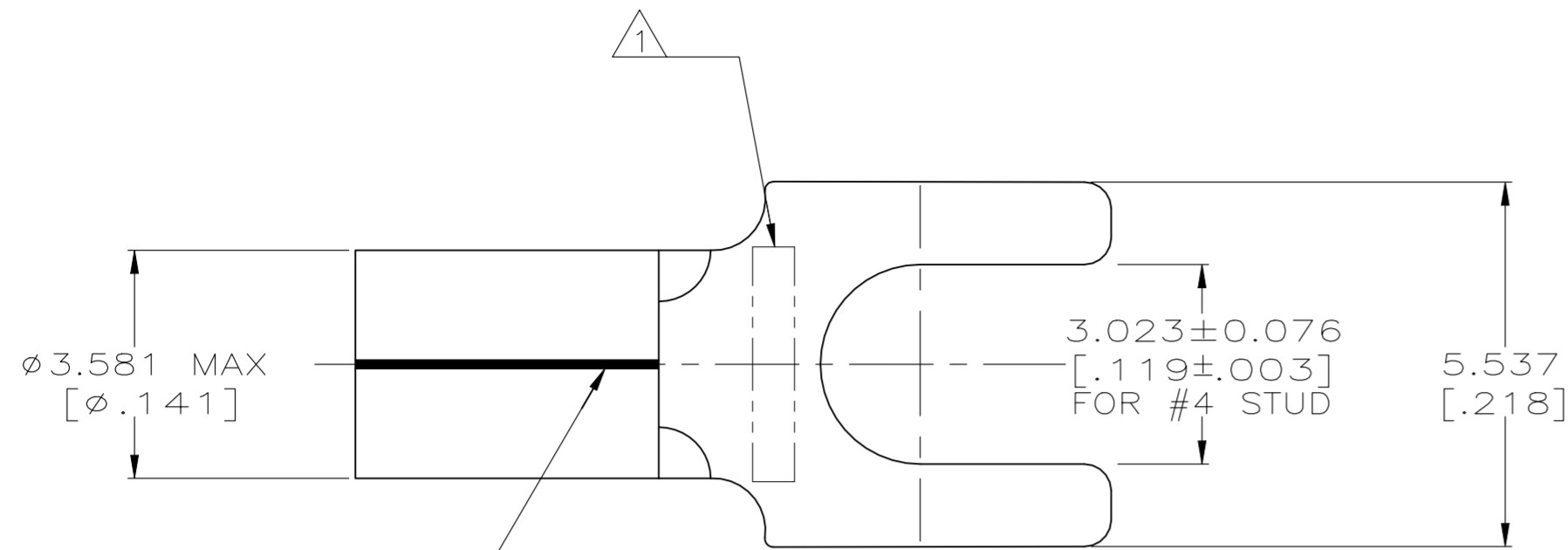
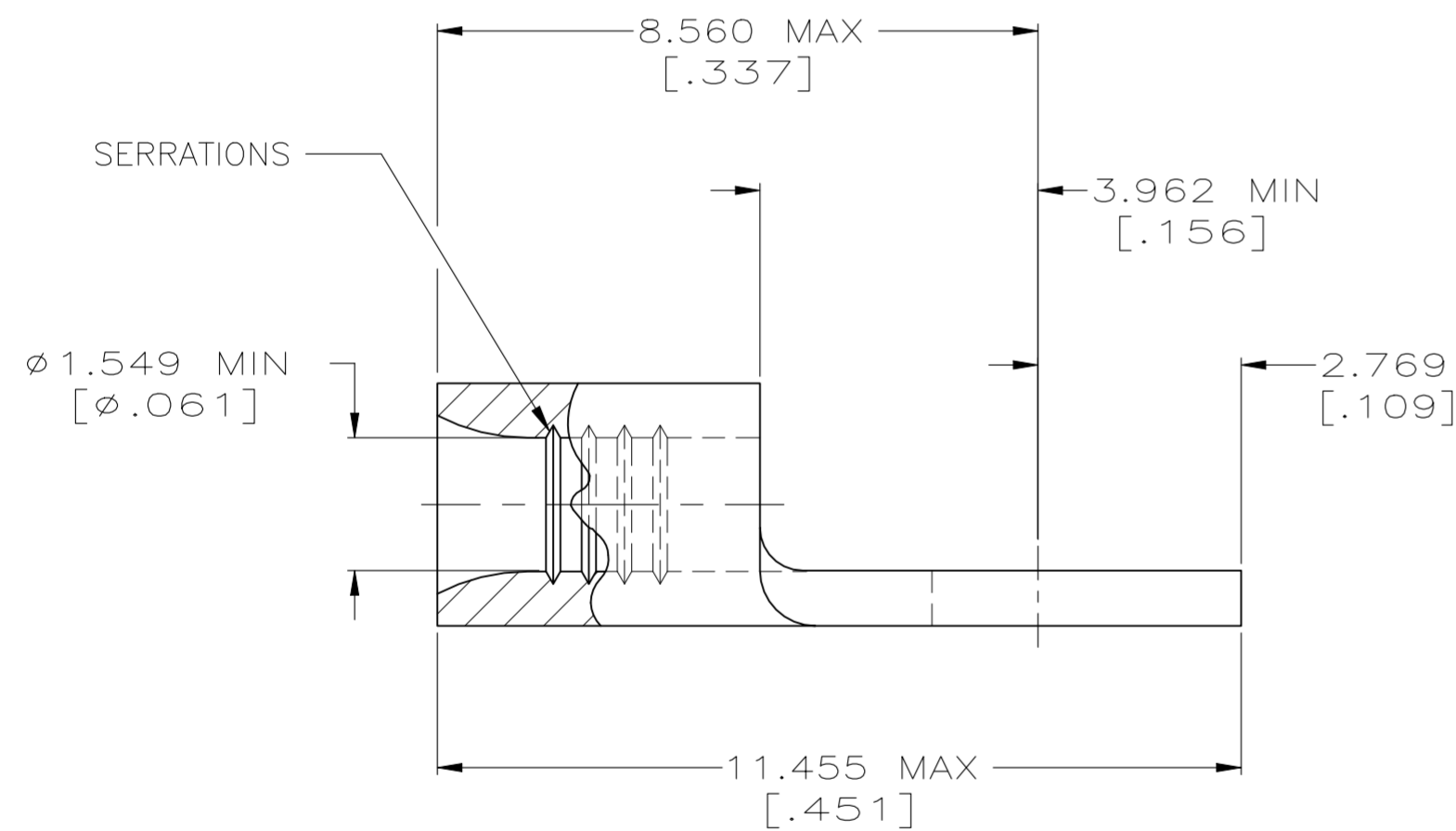


REVISIONS					
P	LTR	DESCRIPTION	DATE	DWN	APVD
G		REVISED PER ECR-23-190001	07NOV2023	AP	DSC



BRAZED SEAM



AMP WIRE RANGE	E13288 Listed
22-16 AWG SOLID OR STRANDED	22-16 AWG SOLID OR STRANDED
LR7189 Certified	MILITARY P/N AND CLASS
22-16 AWG SOLID OR STRANDED	NOT APPLICABLE

- ① STAMP AMP 22-18* APPROX AS SHOWN
COMMERCIAL WIRE RANGE IS 22-16
 - ② MATERIAL: COPPER PER ASTM B152, ANNEALED
 - ③ FINISH:
TIN PLATE 0.00254[.000100] MIN EXT THK
PER ASTM B545
- 4 BODY MATERIAL THK: 0.787±0.051[.031±.002]

1000	LOOSE PIECE	321463
QUANTITY	PACKAGING TYPE	PART NO
DWN TA BRINKMAN 3-26-93 CHK DA PATTERSON 3-26-93 APVD DE MILLER 3-26-93 PRODUCT SPEC APPLICATION SPEC UL 486A-B WEIGHT -		STE TE Connectivity NAME TERMINAL, SPADE TONGUE, SOLISTRAND™ WIRE SIZE: 22-16 AWG SIZE A2 CAGE CODE 00779 DRAWING NO C-321463 RESTRICTED TO -
CUSTOMER DRAWING		SCALE 10:1 SHEET 1 OF 1 REV G

AMP INCORPORATED CUSTOMER SERVICE SYSTEMS		MAX RECOMMENDED OPERATING TEMPERATURE: 170°C [338°F]	THIS DRAWING IS A CONTROLLED DOCUMENT.
FOR ADDITIONAL PRODUCT INFORMATION OR COPIES OF DRAWINGS AND TECHNICAL DOCUMENTS PRODUCT INFORMATION CENTER 1-800-522-6752	FOR APPLICATION TOOLING INFORMATION TOOLING ASSISTANCE CENTER 1-800-722-1111	VOLTAGE RATING: NOT APPLICABLE	DIMENSIONS: mm [INCHES]
FOR ORDER ENTRY 1-800-526-5142	WIRE CROSS SECTIONAL AREA RANGE: 0.26-1.65mm² [509-3,260] CIR MILS SOLID OR STRANDED	TOLERANCES UNLESS OTHERWISE SPECIFIED: 0 PLC ± - 1 PLC ± - 2 PLC ± - 3 PLC ± 0.127[.005] 4 PLC ± - ANGLES ± -	MATERIAL ② FINISH ③
THIS DRAWING IS A CONTROLLED DOCUMENT FOR AMP INCORPORATED. IT IS SUBJECT TO CHANGE AND THE CONTROLLING ENGINEERING ORGANIZATION SHOULD BE CONTACTED FOR THE LATEST REVISION.			