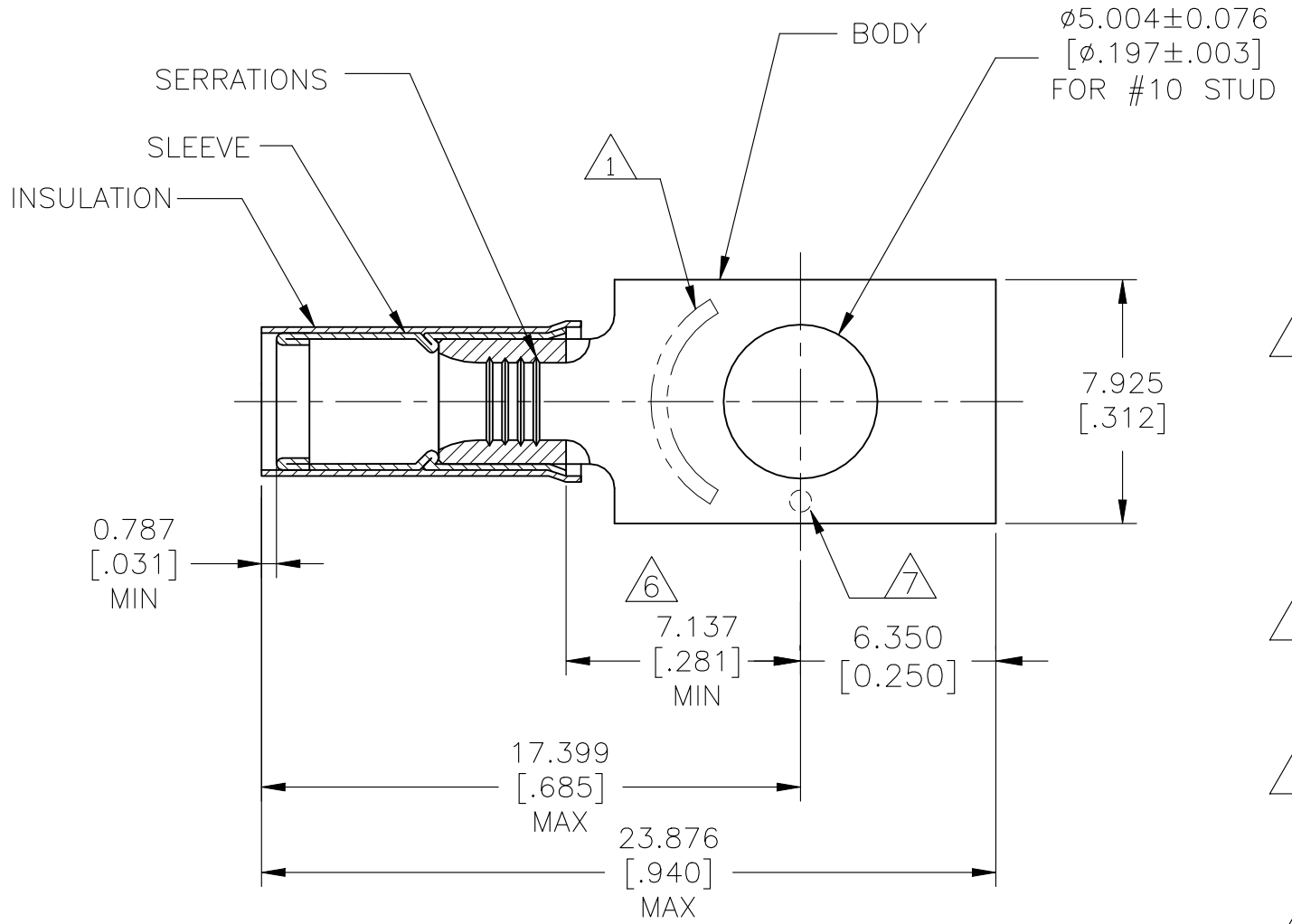


© - TE Connectivity. All Rights Reserved.

REVISIONS

P	LTR	DESCRIPTION	DATE	DWN	APVD
	F	REVISED PER ECR-23-181664	27JUN2023	SA	DSC



AMP WIRE RANGE	Listed FILE E13288	LR7189 Certified
16-14 AWG SOLID OR STRANDED	16-14 AWG SOLID OR STRANDED	16-14 AWG SOLID OR STRANDED

- 1. STAMP AMP 16-14* APPROX AS SHOWN
- 2. WIRE INSULATION DIAMETER:
 $\phi 2.921 [.115]$ TO $\phi 4.318 [.170]$
- 3. BODY MATERIAL THK: $0.787 \pm 0.051 [.031 \pm .002]$
- 4. MATERIAL:
BODY & SLEEVE - COPPER PER ASTM B152
INSULATION - NYLON
- 5. FINISH:
BODY & SLEEVE - TIN PLATE $0.00254 [.000100]$ MIN EXT THK PER ASTM B545
INSULATION COLOR - BLUE
- 6. APPLIES FROM EDGE OF METAL WIRE BARREL TO CENTER OF STUD HOLE
- 7. DIMPLE STAMP MARK OPTIONAL

1000	LOOSE PIECE	324603
QUANTITY	DESCRIPTION	PART NO

AMP INCORPORATED CUSTOMER SERVICE SYSTEMS		MAX RECOMMENDED OPERATING TEMPERATURE: 105°C [221°F]	THIS DRAWING IS A CONTROLLED DOCUMENT.		DWN SANTOSHACHAR S 27JUN2023	TE Connectivity					
FOR ADDITIONAL PRODUCT INFORMATION OR COPIES OF DRAWINGS AND TECHNICAL DOCUMENTS	PRODUCT INFORMATION CENTER 1-800-522-6752	VOLTAGE RATING: 300 V MAX	DIMENSIONS: mm [INCHES]	TOLERANCES UNLESS OTHERWISE SPECIFIED:	CHK SUVARNA CHETHAN D 27JUN2023				NAME TERMINAL, RECTANGULAR TONGUE, PIDG, WIRE SIZE: 16-14 AWG		
FOR APPLICATION TOOLING INFORMATION	TOOLING ASSISTANCE CENTER 1-800-722-1111	WIRE CROSS SECTIONAL AREA RANGE: 1.04-2.62mm ² [2050-5180] CIR MILS SOLID OR STRANDED		0 PLC ± - 1 PLC ± - 2 PLC ± - 3 PLC ± 0.127[.005] 4 PLC ± - ± - ANGLES ± -	APVD SUVARNA CHETHAN D 27JUN2023	PRODUCT SPEC	SIZE	CAGE CODE	DRAWING NO	RESTRICTED TO	
FOR ORDER ENTRY	1-800-526-5142	THIS DRAWING IS A CONTROLLED DOCUMENT FOR AMP INCORPORATED. IT IS SUBJECT TO CHANGE AND THE CONTROLLING ENGINEERING ORGANIZATION SHOULD BE CONTACTED FOR THE LATEST REVISION	MATERIAL 4	FINISH 5	APPLICATION SPEC	WEIGHT	A3	00779	C-324603	-	
CUSTOMER DRAWING						SCALE	1:1	SHEET	1 OF 1	REV	F