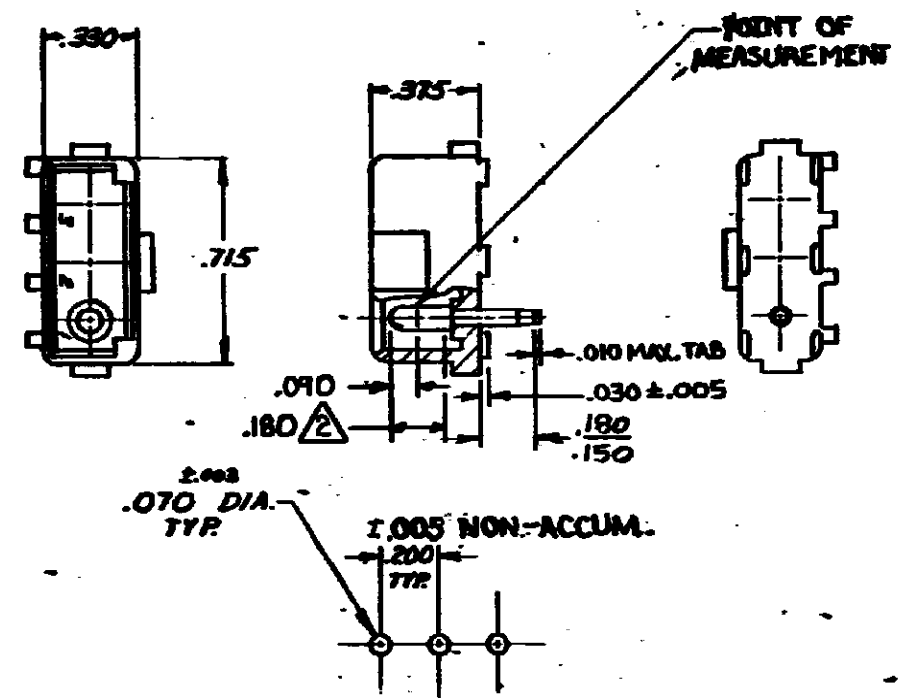


S
S
WAS P-79-G102

DRAWING MADE IN AMERICAN PROJECTION



RECOMMENDED LAYOUT FOR
.062 THICK P.C. BOARD

1. PARTS COMPLY WITH TE SOLDERABILITY SPEC. 109-11-3
2. CONTACT IS PLATED OVERALL WITH .000050 NIKEL, THEN .000030 GOLD OVER CONTACT LENGTH INDICATED AND TIN PLATED ON SOLDER TAIL END.
3. DIMENSION SHOWN REPRESENT PRODUCT IN DRY CONDITION. ADDITIONAL 2% GROWTH DUE TO END USE LOCATION MOISTURE ABSORPTION MAY OCCUR AND SHOULD BE ACCOUNTED FOR.

SUPERSEDED BY
1586532-2

L3	REVISED PER ECR-21-117185	PJ	VS	25OCT 2021
L2	REVISED PER ECR-18-008156	JB	DZ	19JUN 2018
L1	REVISED PER ECR-13-008342	AV	RP	12NOV 2013
L	OBsolete 1-24 3-1,4,5-16-17-1 8-1,9-13,22,32 42,62,72,82,92,03	KW	RS	4-21 86

M	RESTORED	RS	RS	7-77
K	REV. PER M-7375	63	DP	7-77
J	REV. PER M-7285	64	DH	7-77
H	ADDED NOTE 2 R-6191	57	DH	7-77
G	ISSUED CHANGE M-5134	55	DH	7-77
F	REV. TAIL LENGTH M-5334	54	DH	7-77
E	REVISED M-3932	53	DH	7-77
D	ECN M-3877	52	DH	7-77
C	RELEASED	DW	DH	7-77
B	ECN M-3452	67	DP	7-77
A	ECN M-3152	66	DP	7-77
LTH	REVISION RECORD	DR	CHK	DATE

NUMBER	350541
REQUIRED PER ASSEMBLY	
DESCRIPTION	

ASSEMBLY NO	5-350541-2	MATL & COLOR	NYLON - GREEN	PIN MATL & FINISH	COPPER ALLOY - GOLD
ASSEMBLY NO	350541-2	MATL & COLOR	NYLON NATURAL	PIN MATL & FINISH	COPPER ALLOY GOLD
ASSEMBLY NO	350541-1	MATL & COLOR	NYLON - NATURAL	PIN MATL & FINISH	COPPER ALLOY - PRE-TIN
<p>© 1973 TE AMP INCORPORATED. ALL RIGHTS RESERVED. AMP PRODUCTS COVERED BY PATENTS AND/OR PATENTS PENDING.</p> <p>DR 5-20-73 9. Eckman</p> <p>CHK 4/1/73 Luff/Hawthorne</p> <p>DC 1/10/73</p> <p>APP 1/10/73</p>					
MATERIAL AND FINISH		WIRE RANGE - INSULATION		TYPE	
SEE TABLE		H		POSITIVE LOCK	
TOLERANCE EXCEPT AS NOTED		SCALE	1/16	CM	B
2.015 ± 0.01		± 10°	H	NO 350541 L3	
NAME 3 CIRCUIT MATE-N-LOK P.C. BOARD HEADER					

DIMENSIONS IN INCHES, UNLESS OTHERWISE SPECIFIED