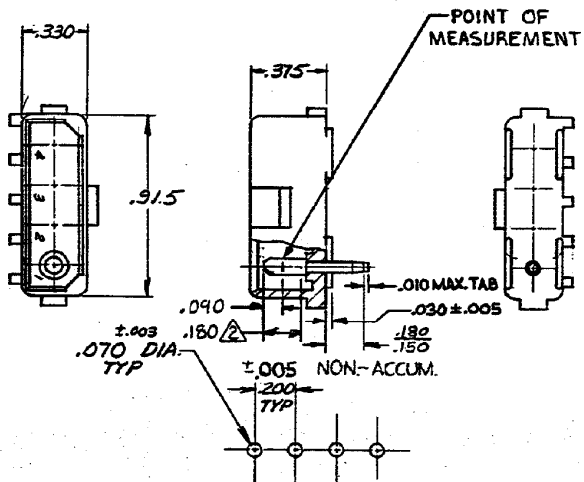


S

WAS P-73-6103



RECOMMENDED LAYOUT FOR
.062 THICK P.C. BOARD

1. PARTS COMPLY WITH TE SOLDERABILITY SPEC. 109-11-3
2. CONTACT IS PLATED OVERALL WITH .00050 NICKEL, THEN .000030 GOLD OVER CONTACT LENGTH INDICATED AND TIN PLATED ON SOLDER TAIL END.
3. DIMENSION SHOWN REPRESENT PRODUCT IN DRY CONDITION. ADDITIONAL 2% GROWTH DUE TO END USE LOCATION MOISTURE ABSORPTION MAY OCCUR AND SHOULD BE ACCOUNTED FOR.

SUPERSEDED BY
1586534-2

5-350543-2	NYLON - GREEN	COPPER ALLOY - GOLD A
350543-2	NYLON - NATURAL	COPPER ALLOY - GOLD A
350543-1	NYLON - NATURAL	COPPER ALLOY PRE-TIN A
ASSEMBLY NO.	HSG. MATL & COLOR.	PIN MATL & FINISH A
		CUSTOMER COPY REFERENCE ONLY
OR 3-30-73 G. Eckman CHK 1/11/73 C.M. Atwood DE J. Hunter 4-10-73 APP J. Hunter 4-10-73	MATERIAL AND FINISH SEE TABLE WIRE RANGE - INSULATION AS NOTED IN LOTS ± 1% of #	TE Connectivity CLASS .064 DIA. PIN TYPE POSITIVE LOCK NO 350543 N4 MAKE 4 CIRCUIT MATE-N-LOK P.C. BOARD HEADER

DIMENSIONS IN INCHES. DO NOT SCALE PRINT.

REV	REVISION RECORD	DR	CHK	DATE
N4	REVISED PER ECR-21-117185	VS	PJ	26OCT2023
N3	REVISED PER ECR-18-008156	JB	DZ	12NOV 2013
N2	REVISED PER ECR-13-008342	AV	RP	12NOV 2013
N1	REVISED PER ECO-11-005294	RK	HMR	17APR 11

REQUIRED PER ASSEMBLY		DESCRIPTION	
350543 E 4-5-73			

53