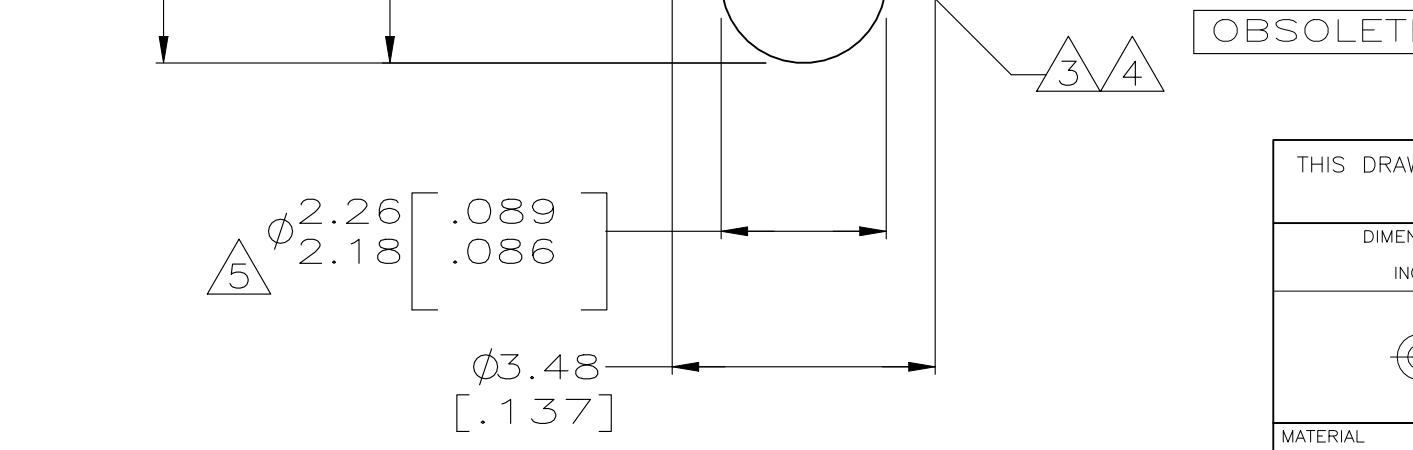
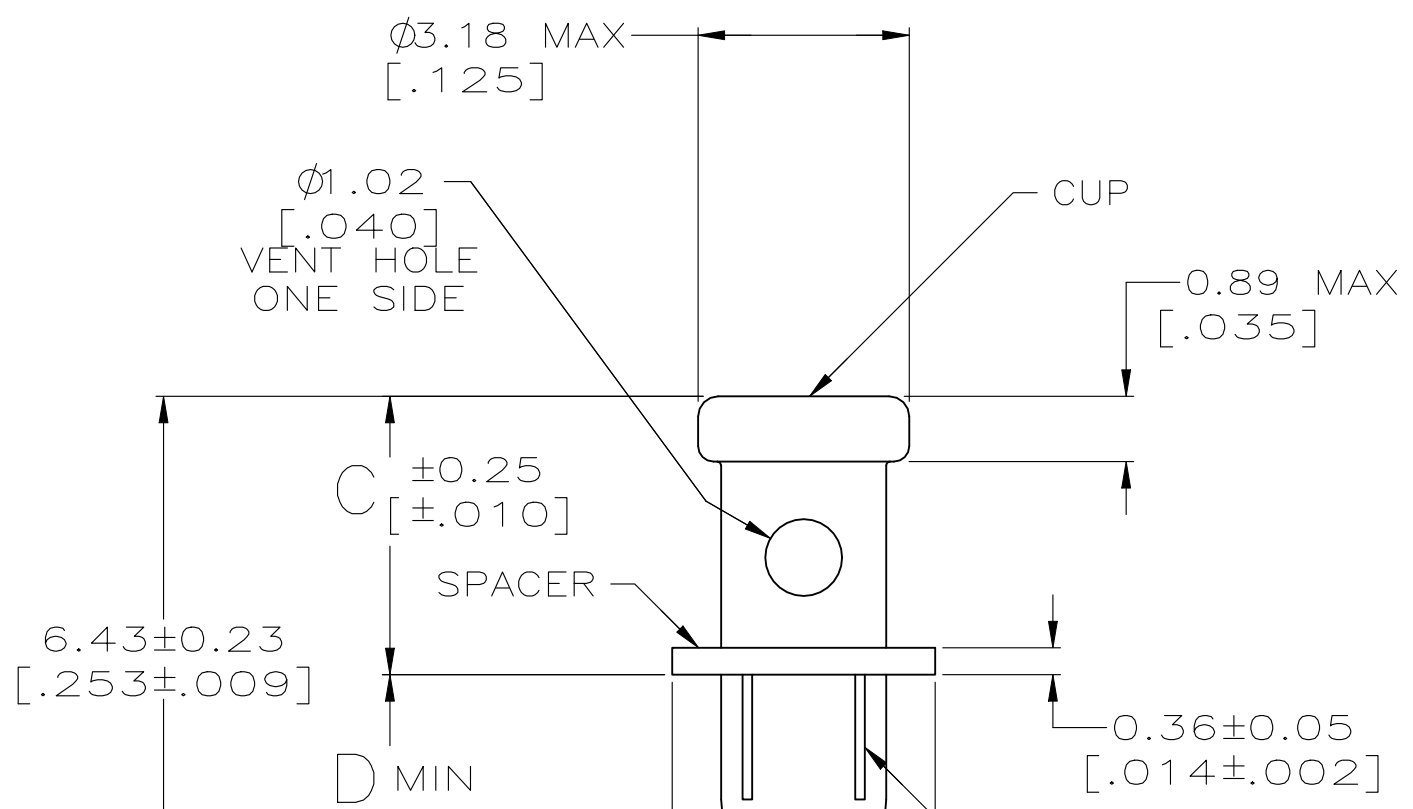
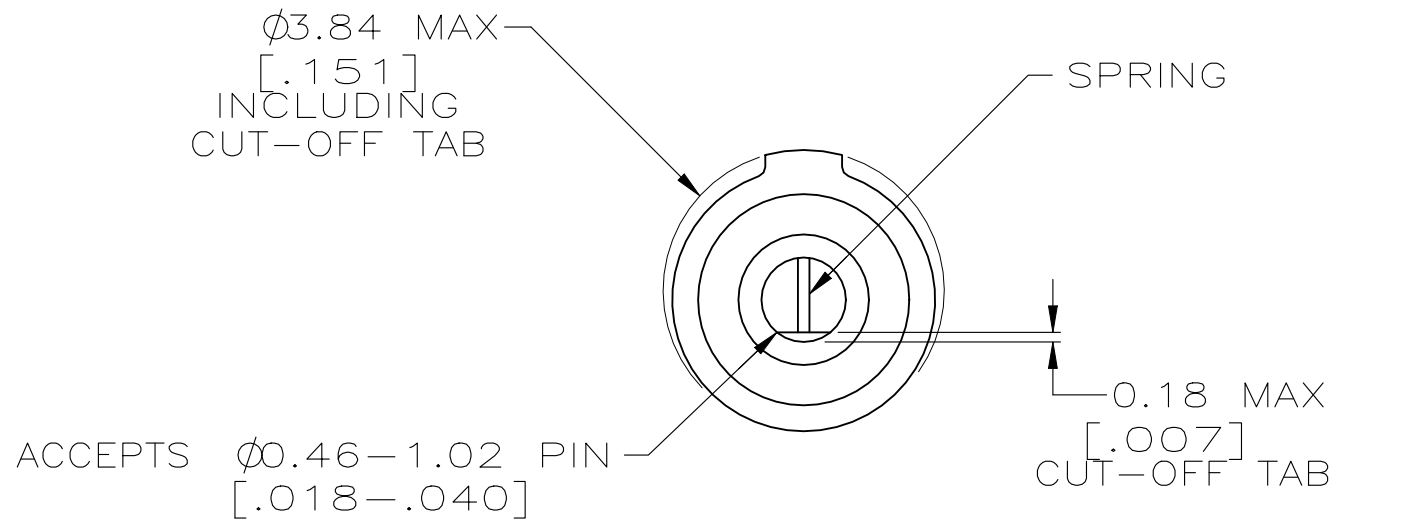


REVISIONS				
P	LTR	DESCRIPTION	DATE	APVD
R4		REVISED AS PER ECR-24-199424	07FEB2024	NR JK



- 1 CUP: COPPER.
SPACER: BRASS.
SPRING: BERYLLIUM COPPER.
- 2 CUP: $2.54 \mu\text{m}$ [.000100] MIN TIN-LEAD.
SPACER: $2.03 \mu\text{m}$ [.000080] MIN TIN-LEAD OVER
 $1.27 \mu\text{m}$ [.000050] MIN NICKEL.
SPRING: GOLD FLASH OVER $1.27 \mu\text{m}$ [.000050] MIN NICKEL.
 $0.76 \mu\text{m}$ [.000030] MIN GOLD IN CONTACT AREA.
- 3 4 BARE LINES 90° APART ON OUTSIDE OF CUP.
- 4 $\phi 2.11$ [.083] MIN ACROSS BARE METAL.
- 5 FITS INTO $\phi 2.261 \pm 0.038$ [.0890 \pm .0015] HOLE,
FOR HAND INSERTION.
- 6. 3.68 [.145] MIN INSERTION DEPTH FOR RELIABLE CONTACT
OF COMPONENT LEAD.
- 7. AFTER SIZING WITH PIN "A", SAME PART MUST MEET
EXTRACTION FORCE WITH PIN "B".

PIN "A" DIA	MAX INSERTION FORCE GRAMS [OUNCES]	PIN "B" DIA	MIN EXTRACTION FORCE GRAMS [OUNCES]
0.51 [.020]	482 [17]	0.46 [.018]	28.3 [1.0]
0.81 [.032]	1049 [37]	0.64 [.025]	42.5 [1.5]
1.02 [.040]	1361 [48]	0.89 [.035]	56.7 [2.0]

- 8 SUPERSEDED BY 1-380737-0.
- 9 CUP: $7.62 \mu\text{m}$ [.000300] MIN MATTE TIN-LEAD OVER
 $1.27 \mu\text{m}$ [.000050] MIN NICKEL.
SPACER: $7.62 \mu\text{m}$ [.000300] MIN MATTE TIN-LEAD OVER
 $1.27 \mu\text{m}$ [.000050] MIN NICKEL.
SPRING: GOLD FLASH OVER $1.27 \mu\text{m}$ [.000050] MIN NICKEL.
 $0.76 \mu\text{m}$ [.000030] MIN GOLD IN CONTACT AREA.

NONE	8	2.16 [.085]	3.68 [.145]	2-380737-0
AS SHOWN	2	2.90 [.114]	3.05 [.120]	1-380737-1 8
OBSOLETE AS SHOWN	2	2.16 [.085]	3.68 [.145]	1-380737-0
VENT HOLE	PLATING	D	C	PART NUMBER

THIS DRAWING IS A CONTROLLED DOCUMENT.

DWN D.HARDY 22 DEC 99
CHK H.WYNKOOP 19 JAN 00
APVD H.WYNKOOP 19 JAN 00

STE TE Connectivity

RECEPTACLE ASSEMBLY,
REUSABLE COMPONENT

PRODUCT SPEC
APPLICATION SPEC

SIZE A3 CAGE CODE 00779 DRAWING NO C-380737 RESTRICTED TO -

WEIGHT 0.000000

CUSTOMER DRAWING SCALE 10:1 SHEET 1 OF 1 REV R4