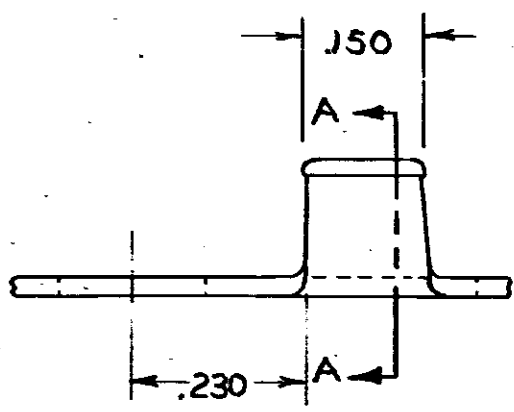
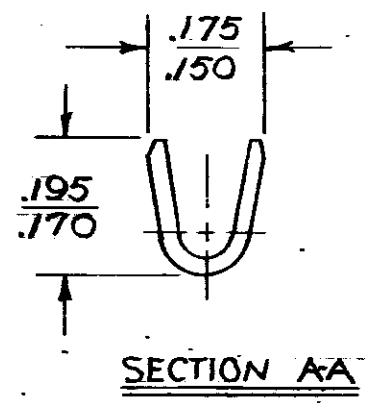
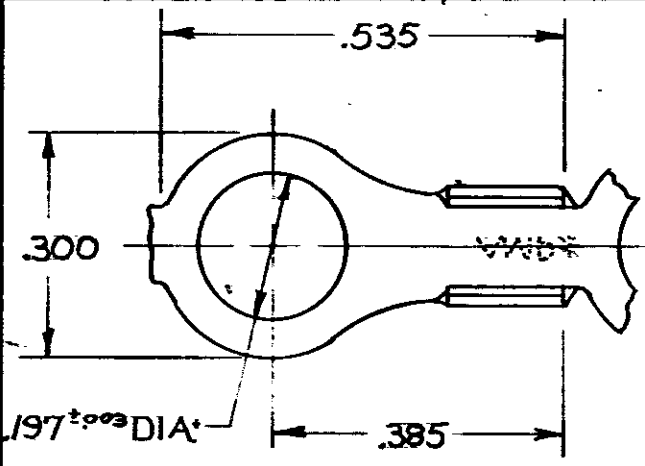


NUMBER
42716
S



CONTINUOUS STRIP ON REELS

| TERMINAL NUMBER | MATERIAL | FINISH |
|-----------------|------------------|--------|
| 42716-1 | .025 THK 430 SST | NONE |
| 42716-2 | .025 THK 304 SST | NONE |

DIMENSIONS IN INCHES. DO NOT SCALE PRINT.

© 1960 BY AMP INCORPORATED. ALL RIGHTS RESERVED. AMP PRODUCTS COVERED BY PATENTS AND/OR PATENTS PENDING.

**CUSTOMER COPY
REFERENCE ONLY**

MATERIAL AND FINISH
SEE TABLE

AMP AMP INCORPORATED
HARRISBURG, PENNA.

| | | | | | |
|---|----------------------|---------|-------|----|---------|
| B | 025-1 | AF-1556 | JRC | SS | 7/25/60 |
| A | ADDED 42716-2 T11 | | PC/RF | | 4-2-60 |
| | SEPERATED FROM 41334 | | | | |

| | | | |
|------|-------|------------|------|
| WIRE | RANGE | INSULATION | TYPE |
| 18 | 14 | 1 | H |

| LTR | REVISION RECORD | DR | CHK | DATE |
|-----|-----------------|----|-----|------|
| | | | | |

| | | | | |
|---------------------------|-------|-----|-------|-----|
| TOLERANCE EXCEPT AS NOTED | SCALE | LOC | NO | REV |
| ± .015 ± 1° 0' | H | A | 42716 | B |

DR G YETTER 6/4/69
CHK Nelson C Neff 6/4/69
APP R P F Adams 6-4-69

NAME RING