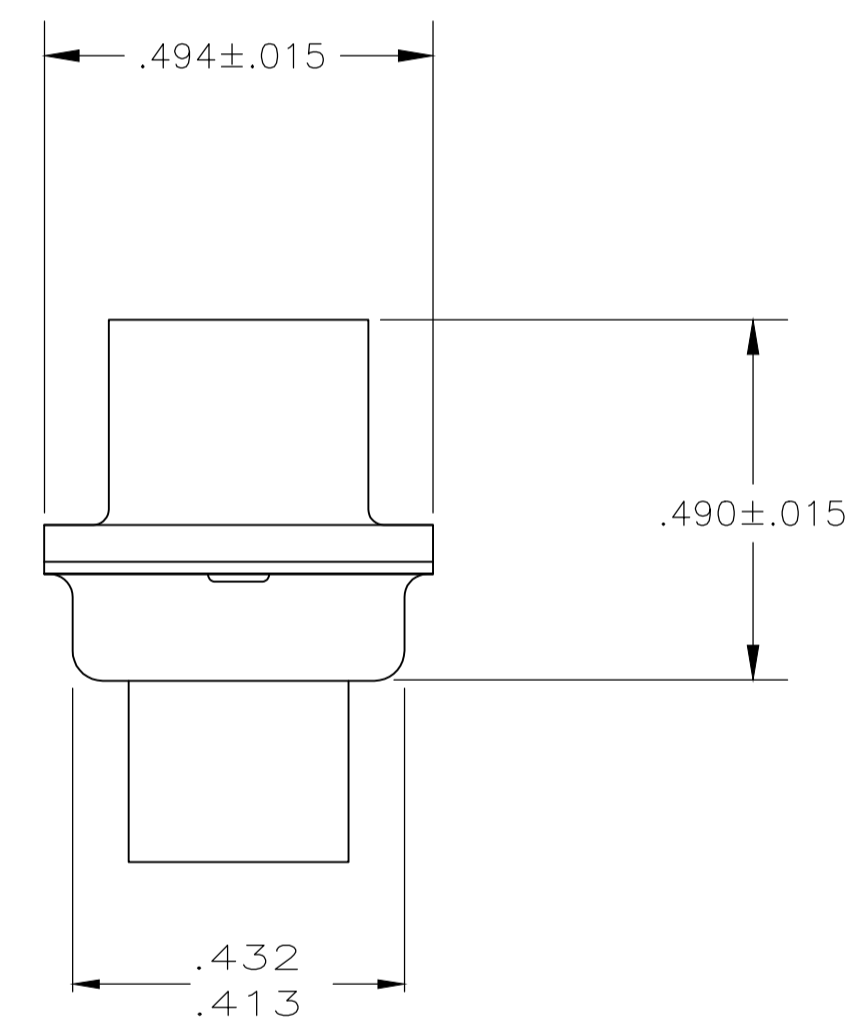
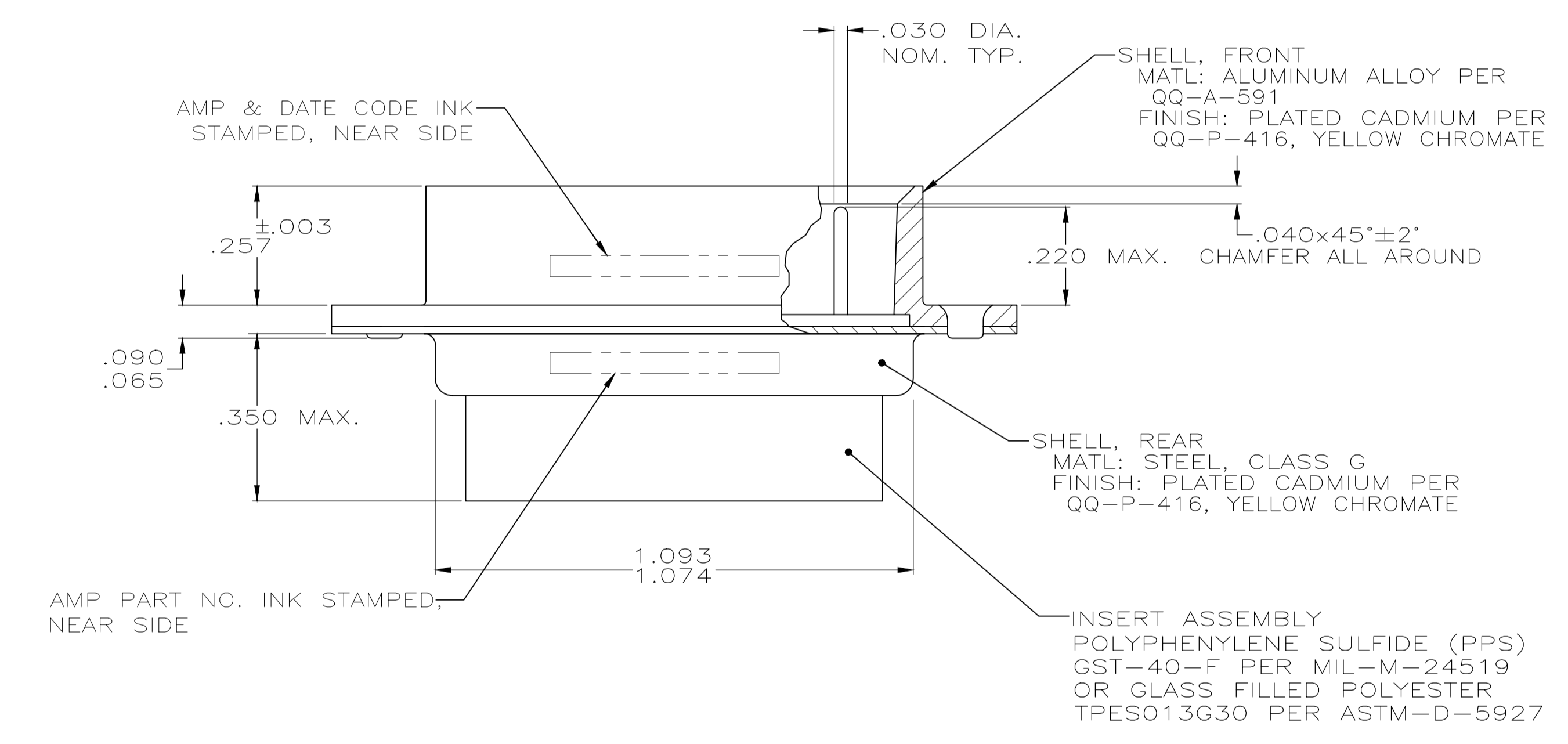
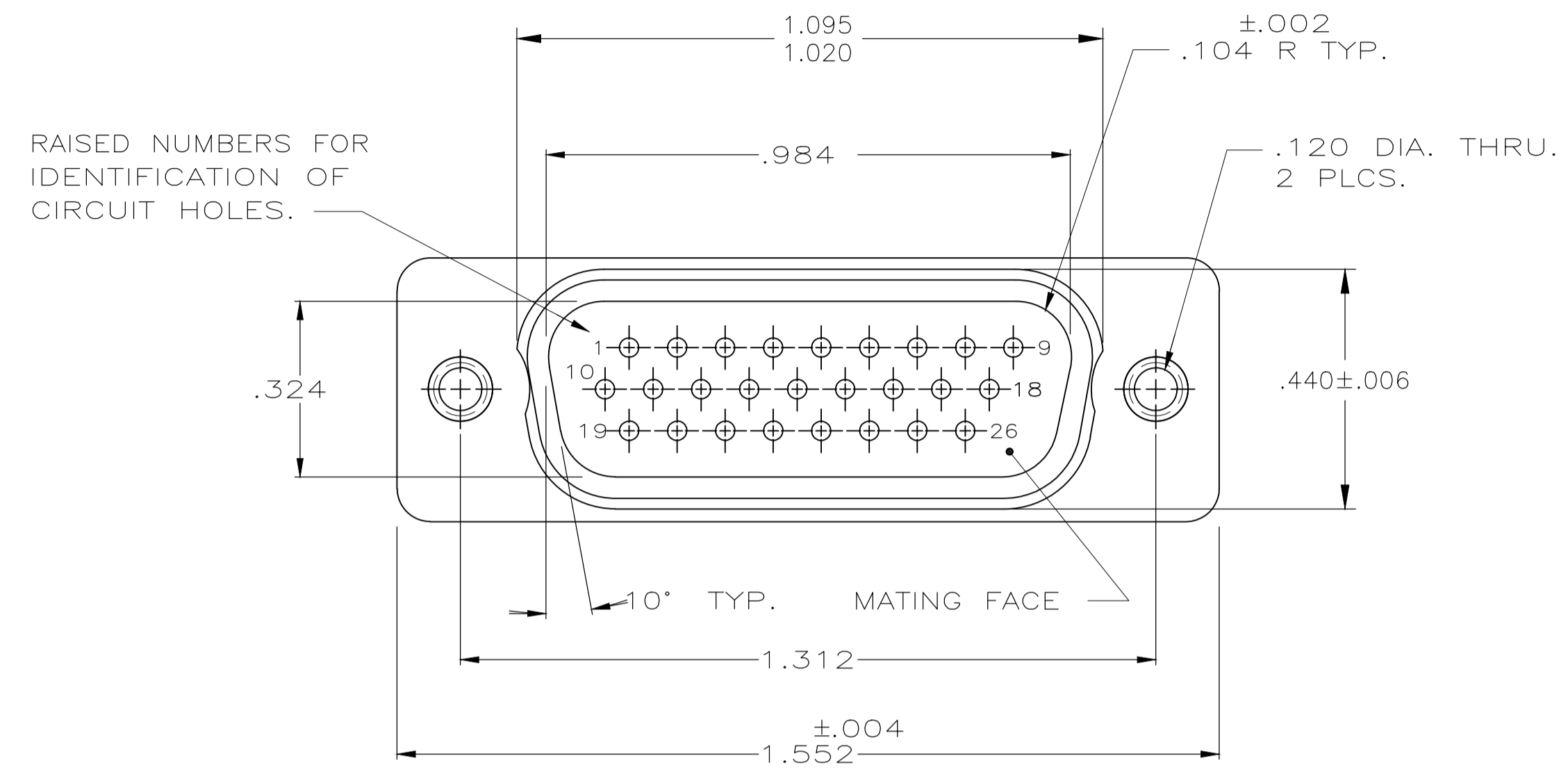


REVISIONS					
P	LTR	DESCRIPTION	DATE	DMN	APVD
N		REV PER ECO 18-011946	9-27-18	CT	DM



- THIS PLUG WILL MATE WITH ANY SIZE 2,26 POSN. RECEPTACLE IN AMPLIMITE SERIES.
- MAXIMUM WIRE INSULATION TO BE USED WITH THIS PLUG IS .054 DIA.
- SST RETENTION CLIPS ARE INCLUDED IN INSERTS.
- THIS PLUG IS DESIGNED TO CONFORM TO THE LATEST ISSUE OF MIL-C-24308.
- CONNECTOR SUPPLIED WITHOUT CONTACTS; SHOWN FOR ILLUSTRATION ONLY.
- THIS PLUG WILL ACCEPT SIZE 22 DM PIN CONTACT M39029/58-22-22D OR ANY AMP SIZE 22 DF PIN CONTACT.

▲ UL/CSA DESIGNATION STAMPED IN THIS AREA.

AS SHOWN	445010-1
DESCRIPTION	PART NO

THIS DRAWING IS A CONTROLLED DOCUMENT.		DIN S. GLATFELTER 10-17-85	TE Connectivity																		
DIMENSIONS: INCHES		CHK: F.C. BALLEW 10-17-85	NAME: PLUG ASSY., AMPLIMITE 26 POSN., SIZE 2, SERIES 90, BLINDMATE																		
TOLERANCES UNLESS OTHERWISE SPECIFIED:		APVD: -	PRODUCT SPEC: -																		
<table border="1"> <tr><td>0 PLC</td><td>±</td><td>-</td></tr> <tr><td>1 PLC</td><td>±</td><td>-</td></tr> <tr><td>2 PLC</td><td>±</td><td>-</td></tr> <tr><td>3 PLC</td><td>±</td><td>.005</td></tr> <tr><td>4 PLC</td><td>±</td><td>-</td></tr> <tr><td>ANGLES</td><td>±</td><td>+</td></tr> </table>		0 PLC	±	-	1 PLC	±	-	2 PLC	±	-	3 PLC	±	.005	4 PLC	±	-	ANGLES	±	+	APPLICATION SPEC: -	
0 PLC	±	-																			
1 PLC	±	-																			
2 PLC	±	-																			
3 PLC	±	.005																			
4 PLC	±	-																			
ANGLES	±	+																			
MATERIAL: SEE CALLOUT	FINISH: SEE CALLOUT	WEIGHT: 0.000000	SIZE: A1	RESTRICTED TO: -																	
CUSTOMER DRAWING		SCALE: 1:1	SHEET: 1 OF 1	REV: N																	