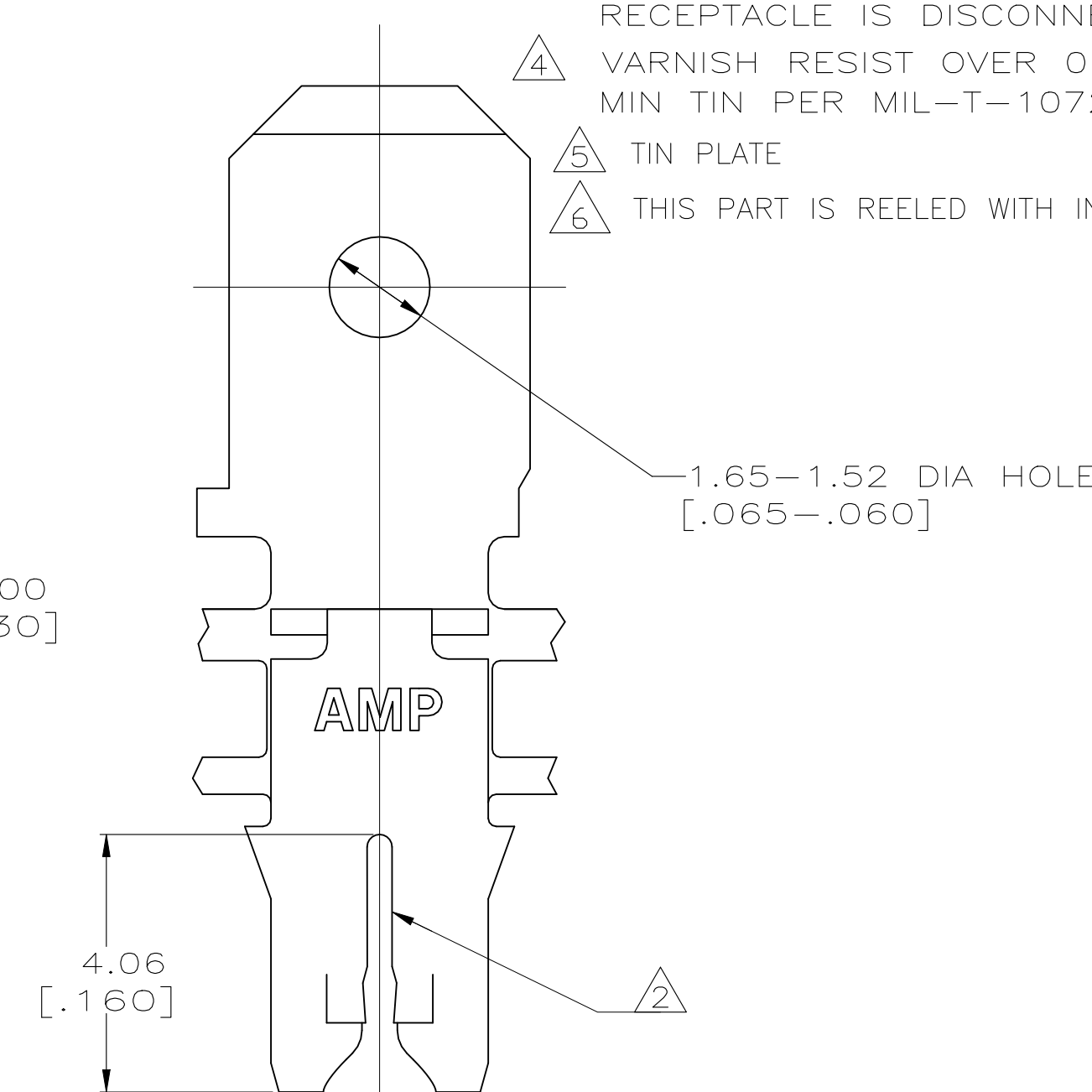
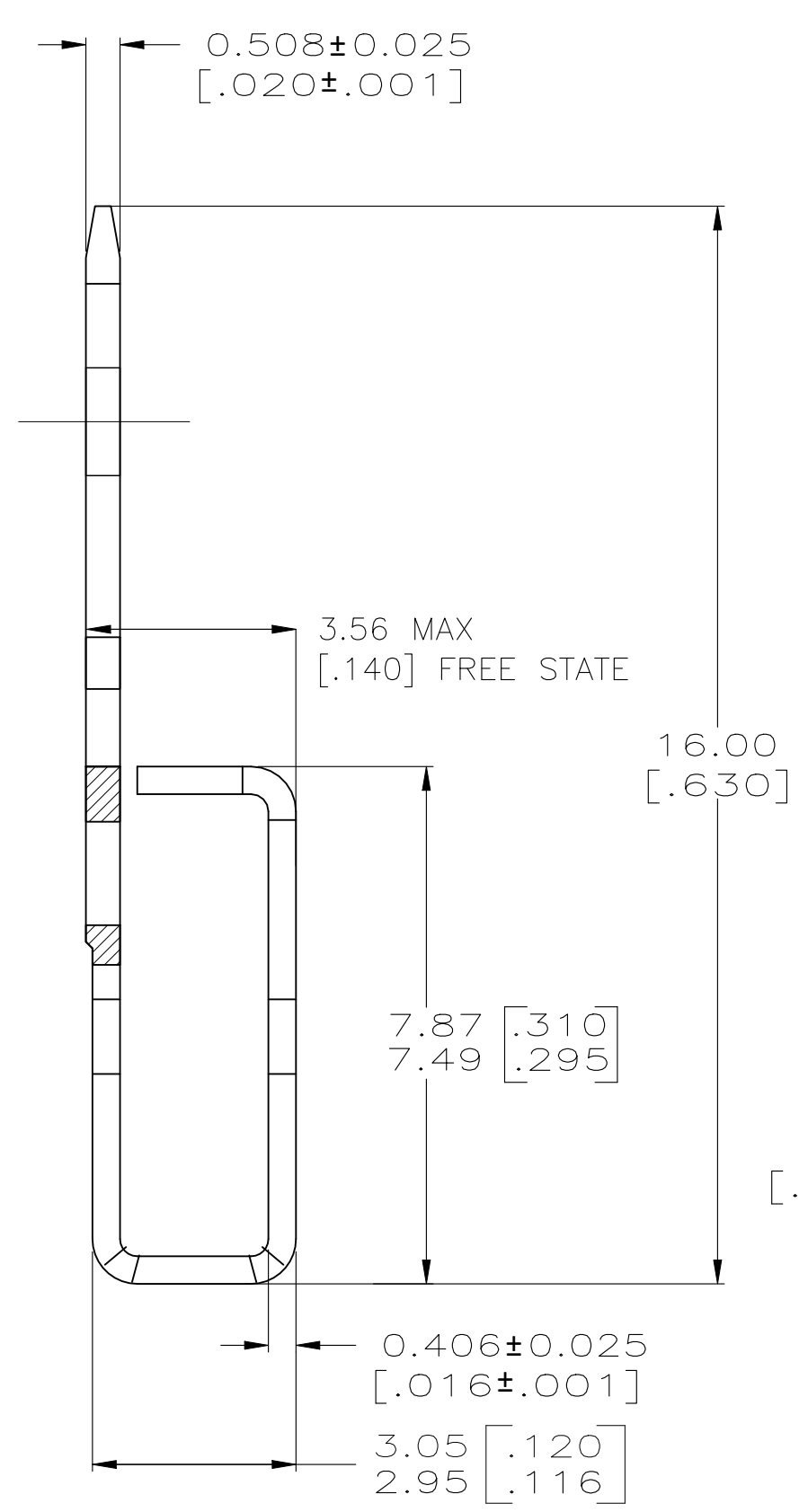
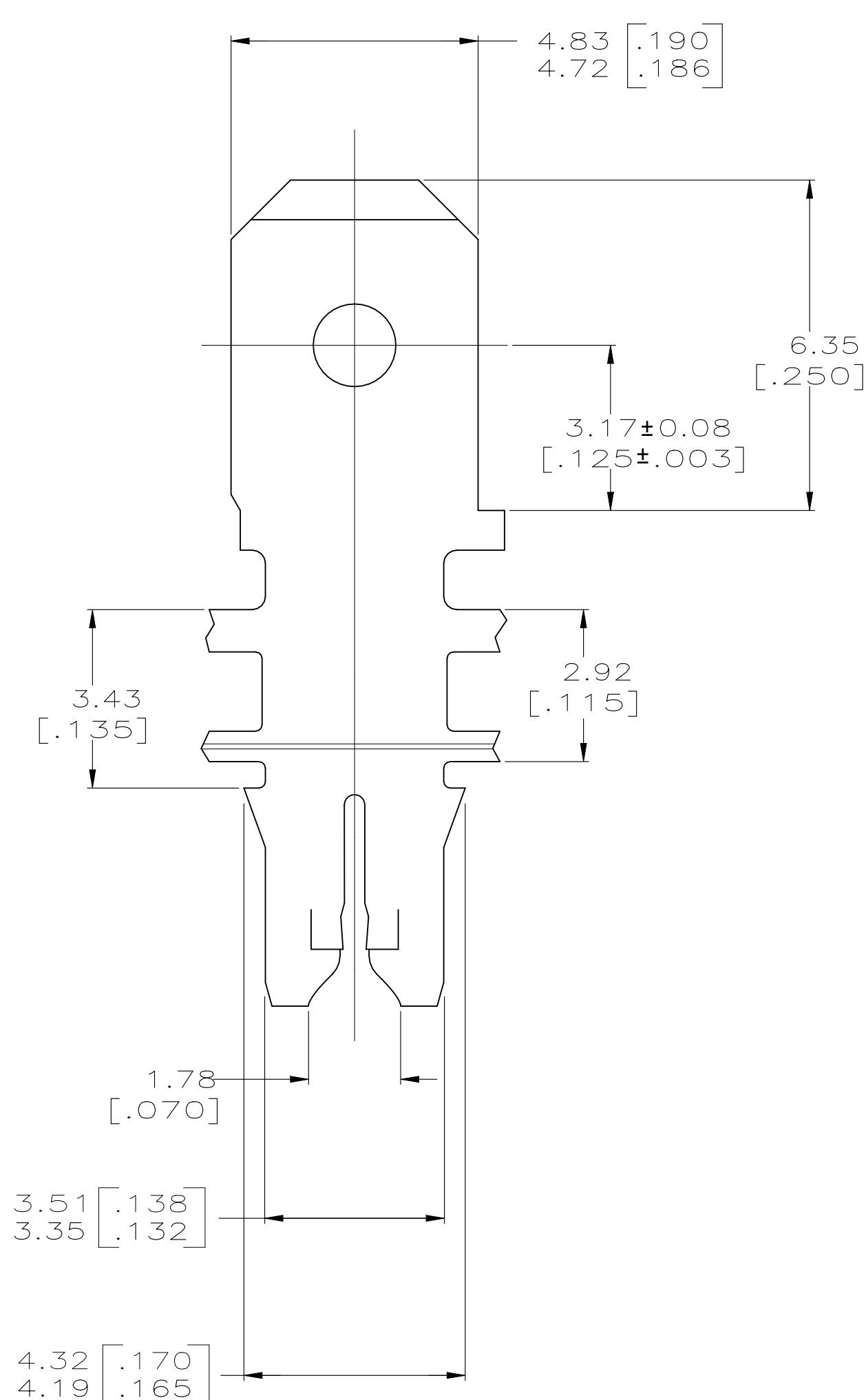
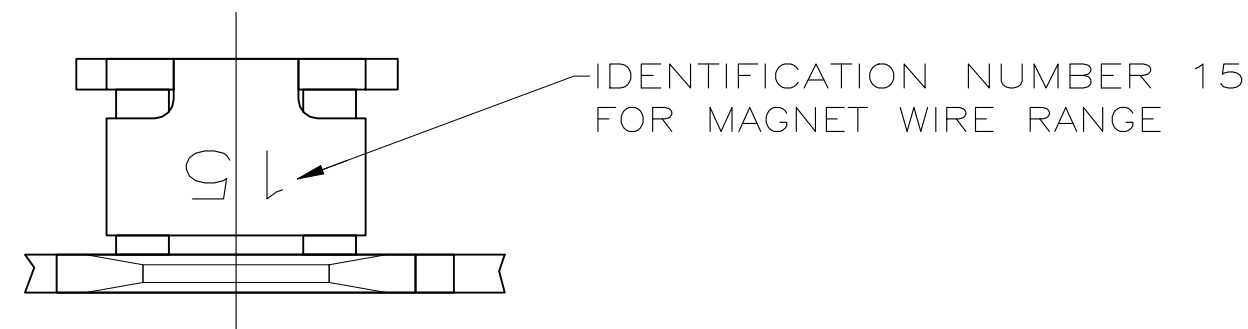


THIS DRAWING IS UNPUBLISHED. RELEASED FOR PUBLICATION
 © COPYRIGHT - By TE CONNECTIVITY ALL RIGHTS RESERVED.

REVISIONS					
P	LTR	DESCRIPTION	DATE	DWN	APVD
E5		REVISED PER ECR-23-178466	16JUN2023	CJH	TD



- 1 CONTINUOUS STRIP ON REELS WITH TERMINALS LOCATED ON 5.59 ± 0.08 [.220±.003] CENTERS. SLOT TERMINATES A SINGLE MAGNET WIRE ONLY. SLOT ALSO ACCEPTED 0.85mm SINGLE COPPER WIRE. COPPER RANGE: 0.64-0.81mm [#22-#20] AWG. ALUMINUM RANGE: 0.72-0.91mm [#21-#19] AWG. ALUMINUM WIRE RANGE APPLIES FOR POST-TIN PLATED VERSIONS ONLY.
- 2 AFTER INSERTION INTO PLASTIC HOLDER TAB PORTION MUST BE BENT OVER 45° TO 90° OR POTTED-IN TO PREVENT PULL-OUT WHEN MATING RECEPTACLE IS DISCONNECTED.
- 3 VARNISH RESIST OVER 0.002032 [.000080] MIN TIN PER MIL-T-10727.
- 4 TIN PLATE
- 5 THIS PART IS REELED WITH INTERLAYER PAPER.

5	63663-3	6
5	63663-2	
4	63663-1	
FINISH	PART NO.	

THIS DRAWING IS A CONTROLLED DOCUMENT.		DWN MICHAEL S. FEHER 9/3/92	TE TE Connectivity		
DIMENSIONS: INCHES		CHK PHILLIP M. FORTNEY 9/4/92			
TOLERANCES UNLESS OTHERWISE SPECIFIED:		APVD NELSON E NEFF 9/15/92	NAME TERMINAL, TAB 4.75 [.187] FASTON™ MAG-MATE™		
0 PLC ± - 1 PLC ± - 2 PLC ± 0.25 [.010] 3 PLC ± - 4 PLC ± - ANGLES ± -		PRODUCT SPEC 108-2012	SIZE A2	CAGE CODE 00779	DRAWING NO C=63663
MATERIAL BRASS		FINISH SEE TABLE	WEIGHT 0	SCALE 10:1	SHEET 1 OF 1
CUSTOMER DRAWING			REV E5	RESTRICTED TO -	