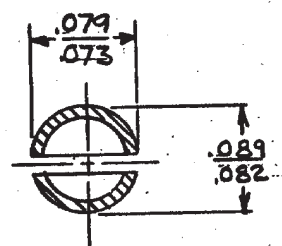
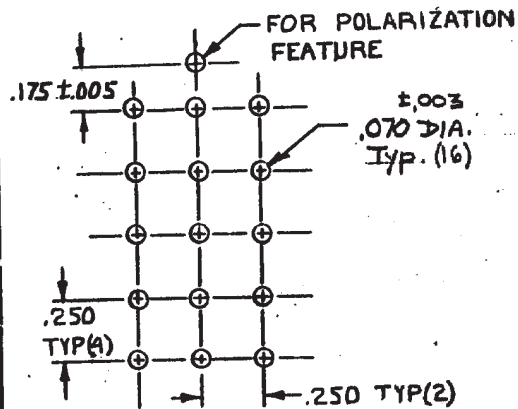
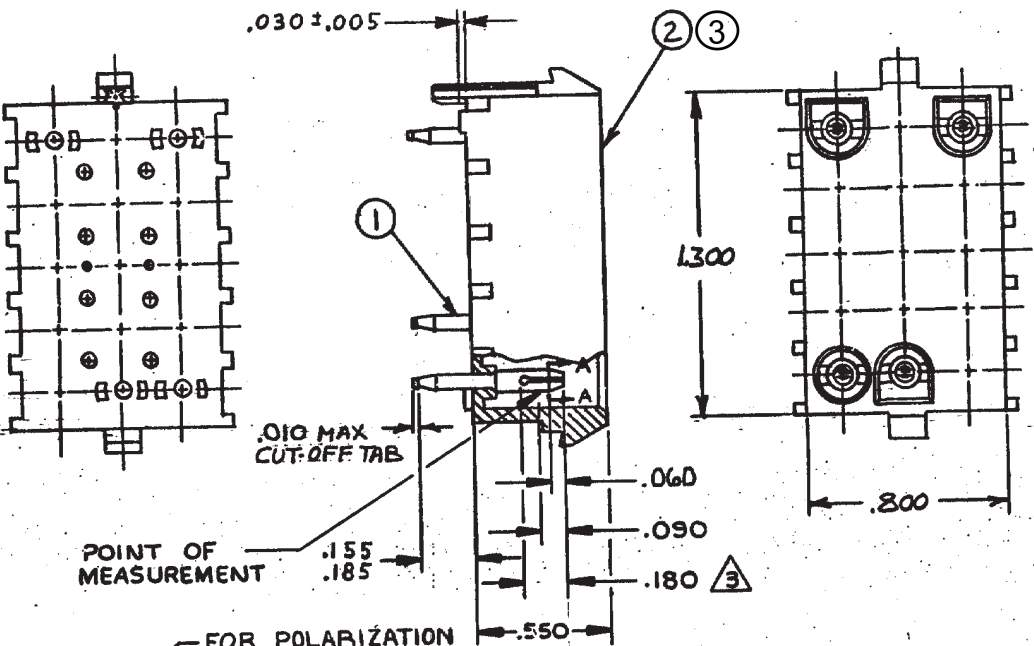


DRAWING MADE IN THIRD ANGLE PROJECTION

THIS DRAWING IS UNPUBLISHED. RELEASED FOR PUBLICATION

© COPYRIGHT 19 BY AMP INCORPORATED, HARRISBURG, PA. ALL INTERNATIONAL RIGHTS RESERVED. AMP PRODUCTS MAY BE COVERED BY U.S. AND FOREIGN PATENTS AND/OR PATENTS PENDING.



SECTION A-A
SCALE 10:1

RECOMMENDED LAYOUT FOR .062 THICK P.C. BOARD

P		ZONE	LTR	DESCRIPTION	DATE	APPROVED
✓	✓		O	REL. NEW DRAWING TTI 81-101	1/11/83	PAS/SH
✓	✓		A	REV PER ECN M-7384	9/13/83	TEB/SJ
✓	✓		B	REV PER ECN AG 214	1/24/84	MC/KS
✓	✓		B ₁	RESTORATION	7-85	KS/SJ
✓	✓		C	ADDED -2 PER TTI CM85-74	9-19-85	CM/RS
✓	✓		D	OBSOLETE -2 PER CM-947	7-14-87	PEC/TB
✓	✓		E	REVISE PER CM-1511	2-9-88	PEC/RS
✓	✓		F	REVISED PER CM-3328	2-20-91	PEC/RS
✓	✓		G	REV PER ECN 0730-3928-92	1-7-93	WJG/RS
✓	✓		H	REVISED PER EC 0730-4181-93	7-6-93	WJG/RS
			H1	REVISED PER ECR-19-018055	09JAN2020	PC/SF
			H2	REVISED PER ECR-21-118222	25JUL2022	AVN/VS

- PARTS COMPLY WITH AMP SOLDERABILITY SPEC. 109-11-3.
- MATES WITH HOUSING No. 480710 USING SOCKET CONTACTS.
- CONTACT IS PLATED OVERALL WITH .000050 NICKEL, THEN .000030 GOLD OVER CONTACT LENGTH INDICATED AND MATTE TIN ON SOLDER TAIL END.
- PRELIMINARY PART.
- DIMENSIONS SHOWN REPRESENT PRODUCT IN DRY CONDITION. ADDITIONAL 2% GROWTH DUE TO END USE LOCATION MOISTURE ABSORPTION MAY OCCUR AND SHOULD BE ACCOUNTED FOR.

No. PER ASSY	DESCRIPTION	MATERIAL & FINISH	ITEM No.	PART NO
1	HOUSING	NYLON, 94V-2, BLACK	3	1-641975-1
15	CONTACT	PHOS BRZ, PRE-TIN	1	4
1	HOUSING	NYLON, 94V-2, NATURAL	2	641975-1
15	CONTACT	PHOS BRZ, PRE-TIN	1	

UNLESS OTHERWISE SPECIFIED DIMENSIONS ARE IN INCHES. TOLERANCES ON: DECIMALS ± .015 ANGLES	CONTRACT NO	TE Connectivity	
	DR D.A. SALTZER 1-11-83	NAME	TE Connectivity
MATERIAL	CHK D.S. Heide 2/14/83	HEADER ASSY, PIN, POLARIZED, UNIVERSAL MATE-N-LOK™ 15 CIRCUIT	
SEE TABLE	APPD [Signature] 2/14/83	SIZE B	FSCM NO 00779
FINISH	DSGN APPD	DRAWING NO 641975	
SEE TABLE	OTHER APPD	SCALE 2:1	SHEET