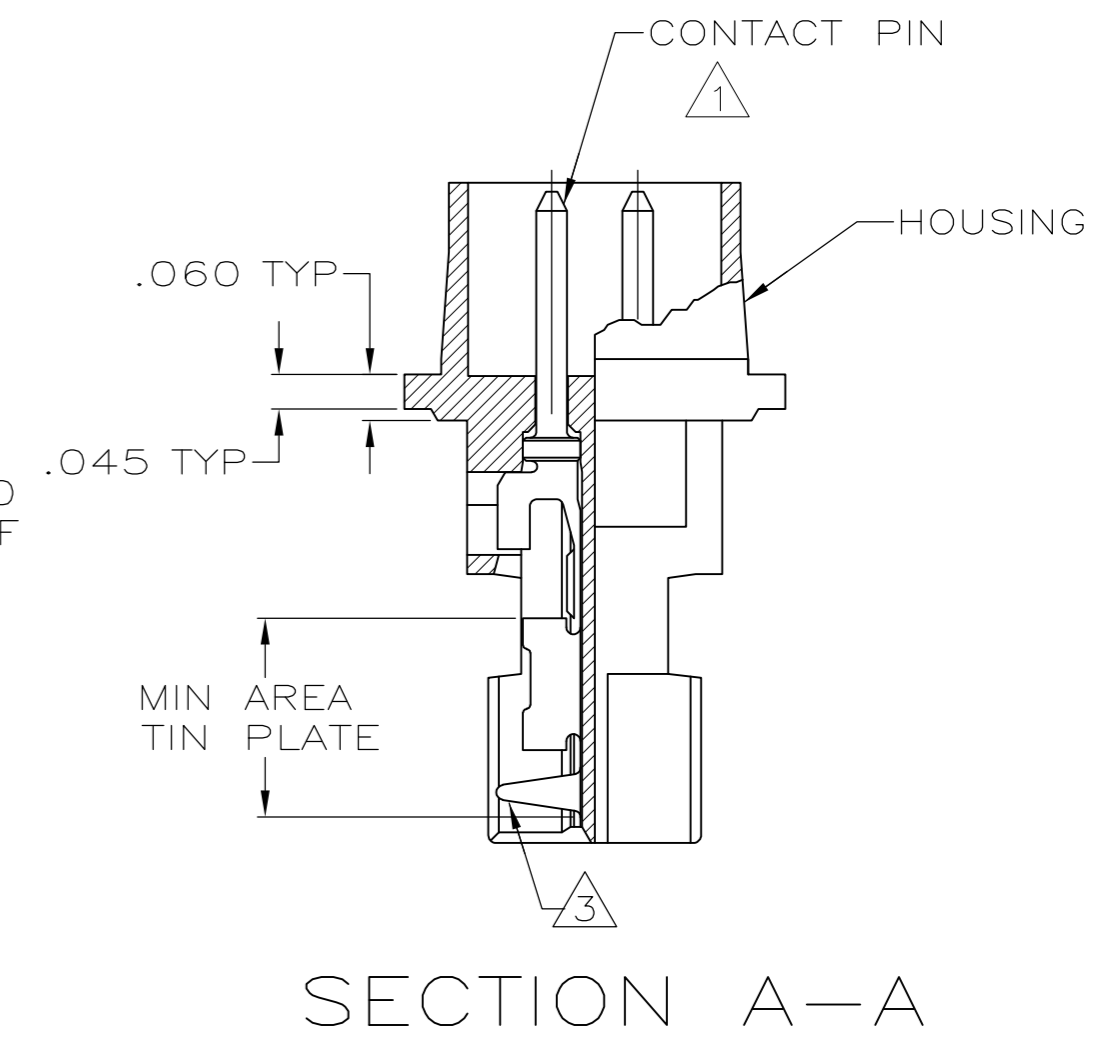
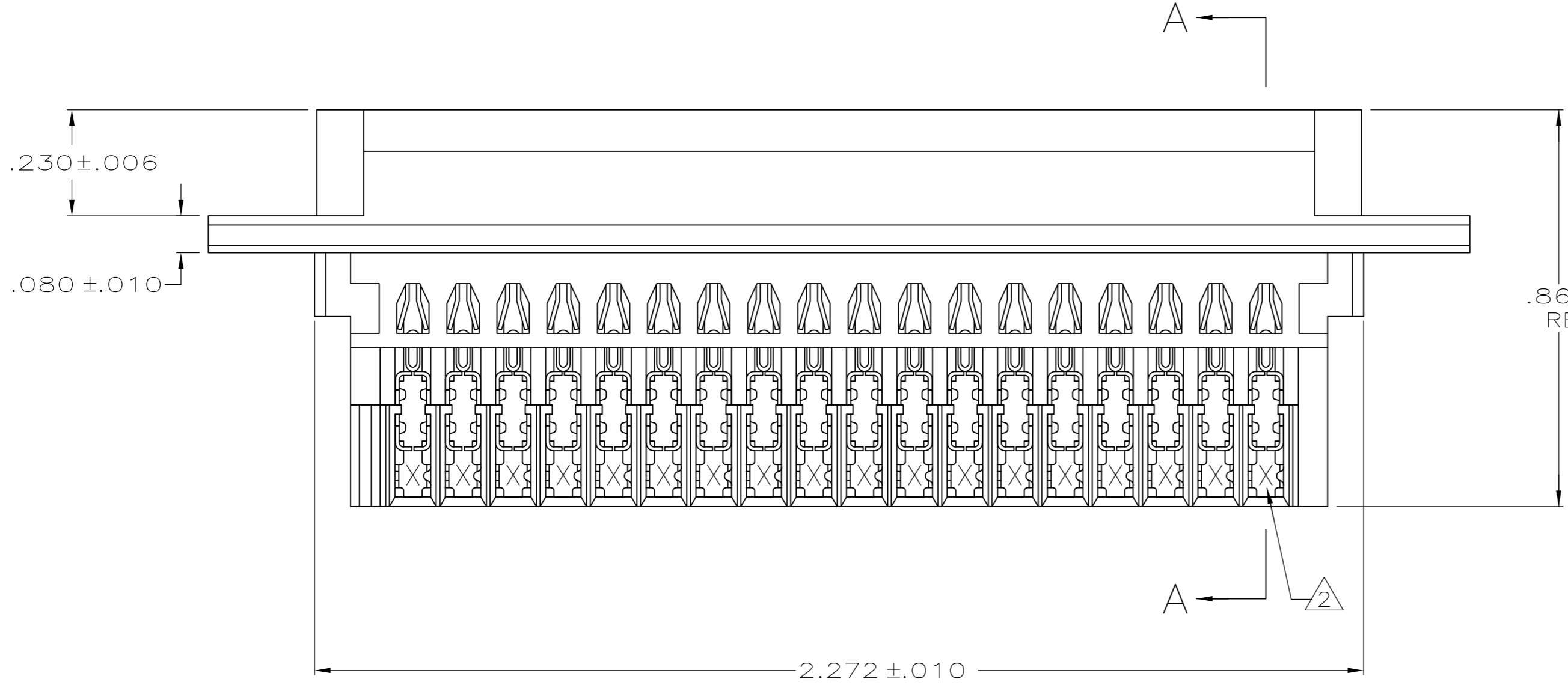
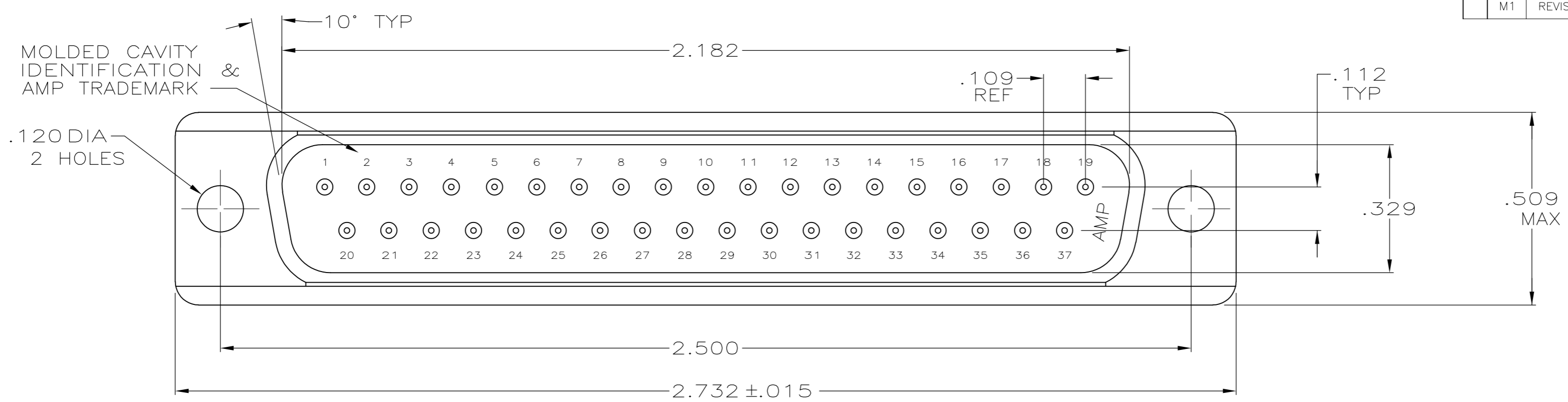


THIS DRAWING IS UNPUBLISHED. RELEASED FOR PUBLICATION
 © COPYRIGHT - By - ALL RIGHTS RESERVED.

LOC	DIST	REVISIONS					
GP	00	P	LTR	DESCRIPTION	DATE	DWN	APVD
		M1		REVISED PER ECO-11-004835	11MAR11	RK	HMR



- ① HOUSING FULLY LOADED WITH CONTACTS.
- ② NUMBER ON CONTACT INDICATES WIRE RANGE.
- ③ CONTACT INSULATION RANGE: .060 MAXIMUM O.D.
- ④ CONTACTS PLATED GOLD PLATED FOR LENGTH OF .150 MIN FROM MATING END, .000030 MIN GOLD IN MATED AREA. .000100-.000200 BRIGHT TIN OR BRIGHT IN TIN-LEAD AREA SHOWN. .000050 NICKEL UNDERPLATE ON ENTIRE CONTACT.
- ⑤ CONTACTS PLATED GOLD PLATED FOR LENGTH OF .150 MIN FROM MATING END, GOLD FLASH IN MATED AREA. .000100-.000200 BRIGHT TIN OR BRIGHT IN TIN-LEAD AREA SHOWN. .000030 NICKEL UNDERPLATE ON ENTIRE CONTACT.
- ⑥ CONTACTS GOLD PLATED FOR A LENGTH OF .150 MIN FROM MATING END, .000030 MIN GOLD IN MATED AREA, .000100-.000200 MATTE TIN IN AREA SHOWN, ALL OVER .000050 MIN NICKEL UNDERPLATE ON ENTIRE CONTACT.
OR
CONTACTS GOLD PLATED FOR A LENGTH OF .150 MIN FROM MATING END, GOLD FLASH OVER PALLADIUM-NICKEL, .000030 MIN TOTAL IN MATED AREA, .000100-.000200 MATTE TIN IN AREA SHOWN, ALL OVER .000050 MIN NICKEL UNDERPLATE ON ENTIRE CONTACT.
- ⑦ HOUSING: BLACK THERMOPLASTIC 94V-0 RATED.
CONTACTS: PHOSPHOR BRONZE.

OBSOLETE SUPD BY 745215-2	⑥	2	#22-26	745215-7
	⑤	3	#20-22	745215-6
		2	#22-26	745215-5
	④	1	#26-30	745215-4
		3	#20-22	745215-3
	③	2	#22-26	745215-2
1		#26-30	745215-1	
FINISH	②	AWG WIRE RANGE		PART NUMBER

THIS DRAWING IS A CONTROLLED DOCUMENT.		DWN L. VARELA - DOCK5 11-15-04	TE Connectivity	
DIMENSIONS: INCHES		CHK J. GERACE 11-15-04	PLUG ASSEMBLY, SIZE 4, 37 POSITION, AMPLIMITE	
TOLERANCES UNLESS OTHERWISE SPECIFIED:		APVD M. WALMSLEY 11-15-04	RESTRICTED TO	
0 PLC ± -		PRODUCT SPEC 108-40011	SIZE CAGE CODE DRAWING NO	
1 PLC ± -		APPLICATION SPEC 114-40002	A2 00779 C=745215	
2 PLC ± -		WEIGHT -	SCALE 4:1 SHEET 1 OF 1 REV M1	
3 PLC ± .005		CUSTOMER DRAWING		
4 PLC ± -				
ANGLES ± 2°				
MATERIAL ⑦		FINISH SEE TABLE		