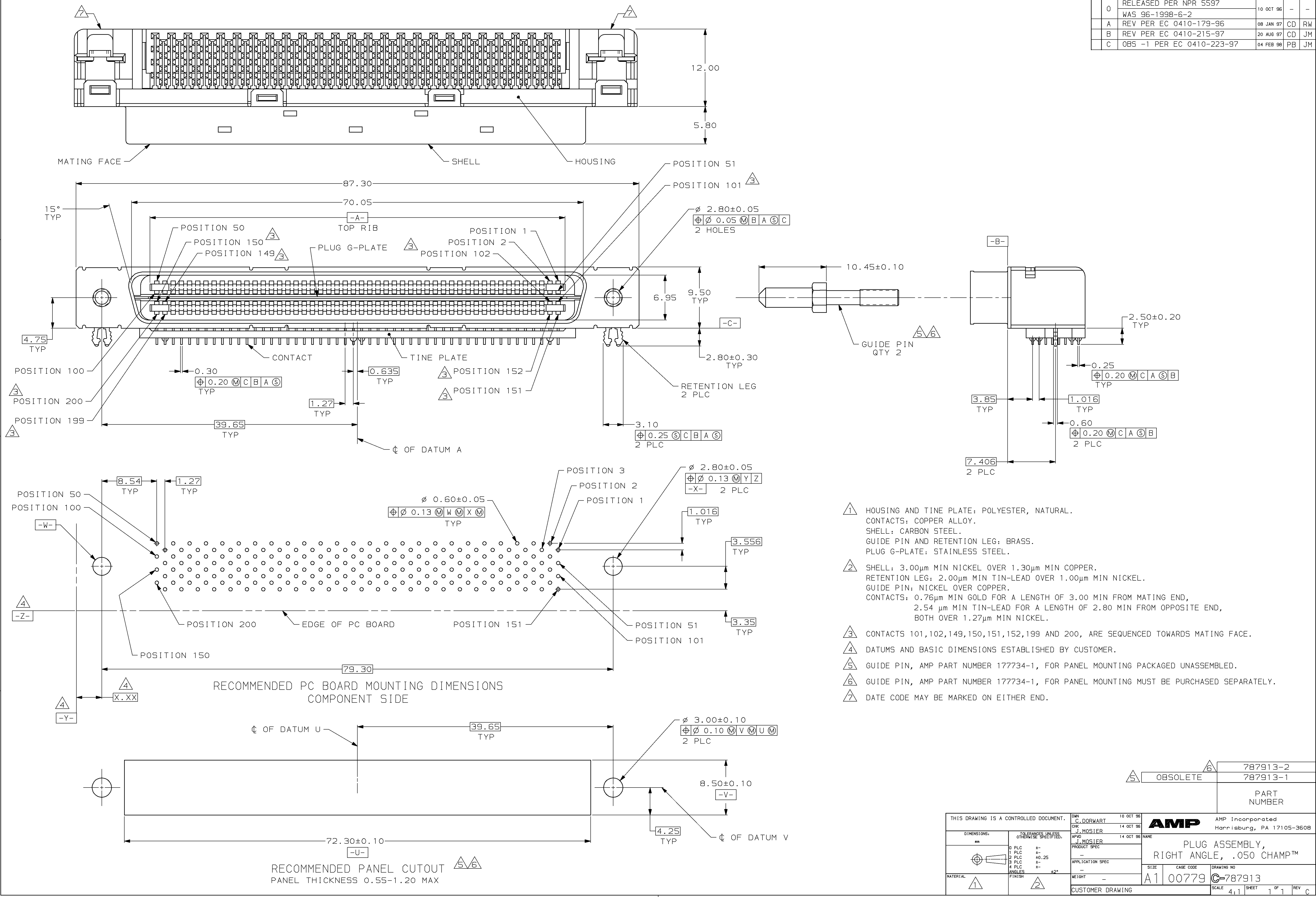


REVISONS		DATE	OWN	APVD
0	RELEASED PER NPR 5597 WAS 96-1998-6-2	10 OCT 96	-	-
A	REV PER EC 0410-179-96	08 JAN 97	CD	RW
B	REV PER EC 0410-215-97	20 AUG 97	CD	JM
C	OBS -1 PER EC 0410-223-97	04 FEB 98	PB	JM



- ① HOUSING AND TINE PLATE: POLYESTER, NATURAL.  
CONTACTS: COPPER ALLOY.  
SHELL: CARBON STEEL.  
GUIDE PIN AND RETENTION LEG: BRASS.  
PLUG G-PLATE: STAINLESS STEEL.
- ② SHELL: 3.00µm MIN NICKEL OVER 1.30µm MIN COPPER.  
RETENTION LEG: 2.00µm MIN TIN-LEAD OVER 1.00µm MIN NICKEL.  
GUIDE PIN: NICKEL OVER COPPER.  
CONTACTS: 0.76µm MIN GOLD FOR A LENGTH OF 3.00 MIN FROM MATING END,  
2.54 µm MIN TIN-LEAD FOR A LENGTH OF 2.80 MIN FROM OPPOSITE END,  
BOTH OVER 1.27µm MIN NICKEL.
- ③ CONTACTS 101,102,149,150,151,152,199 AND 200, ARE SEQUENCED TOWARDS MATING FACE.
- ④ DATUMS AND BASIC DIMENSIONS ESTABLISHED BY CUSTOMER.
- ⑤ GUIDE PIN, AMP PART NUMBER 177734-1, FOR PANEL MOUNTING PACKAGED UNASSEMBLED.
- ⑥ GUIDE PIN, AMP PART NUMBER 177734-1, FOR PANEL MOUNTING MUST BE PURCHASED SEPARATELY.
- ⑦ DATE CODE MAY BE MARKED ON EITHER END.

⑥	787913-2
⑦	787913-1
PART NUMBER	

THIS DRAWING IS A CONTROLLED DOCUMENT.		OWN C. DORWART	10 OCT 96	<b>AMP</b>	AMP Incorporated Harrisburg, PA 17105-3508	
DIMENSIONS: mm		CHK J. MOSIER	14 OCT 96		NAME PLUG ASSEMBLY, RIGHT ANGLE, .050 CHAMP™	
TOLERANCES UNLESS OTHERWISE SPECIFIED:		APP'D J. MOSIER	14 OCT 96	PRODUCT SPEC		SIZE A1
0 PLC	±	APPLICATION SPEC		DRAWING NO C-787913		WEIGHT
1 PLC	±0.25	MATERIAL		SCALE 4:1		SHEET 1 OF 1
2 PLC	±	FINISH		REV		CUSTOMER DRAWING