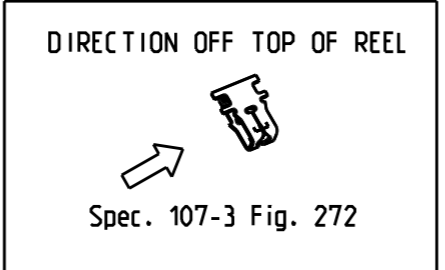
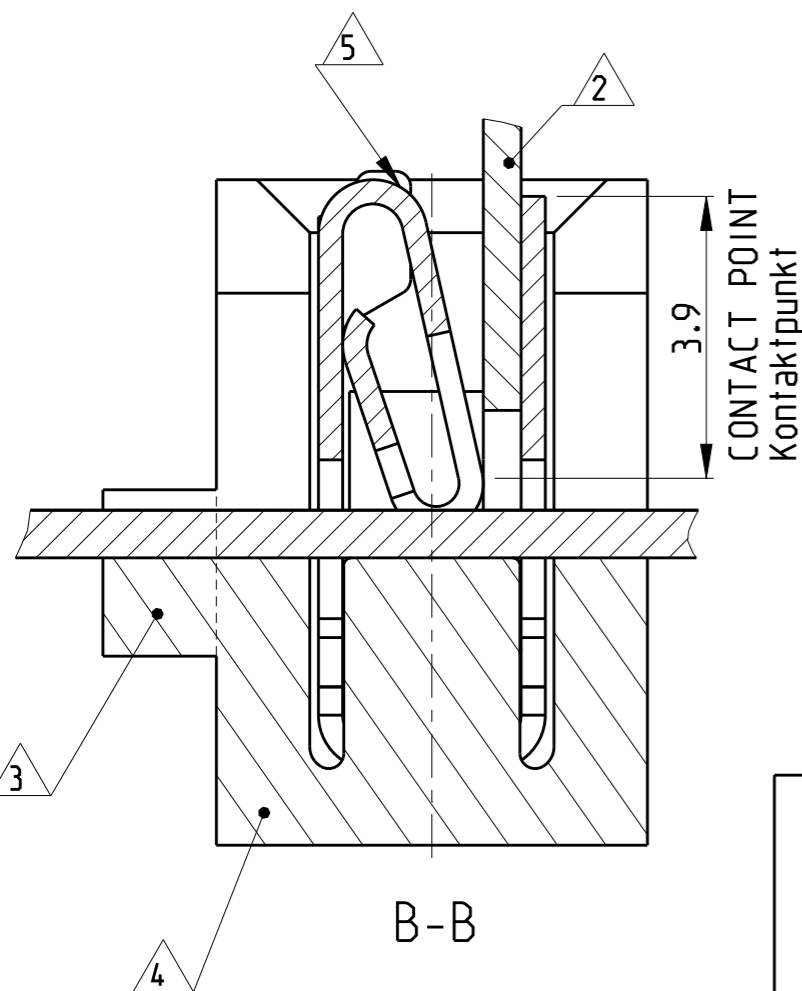
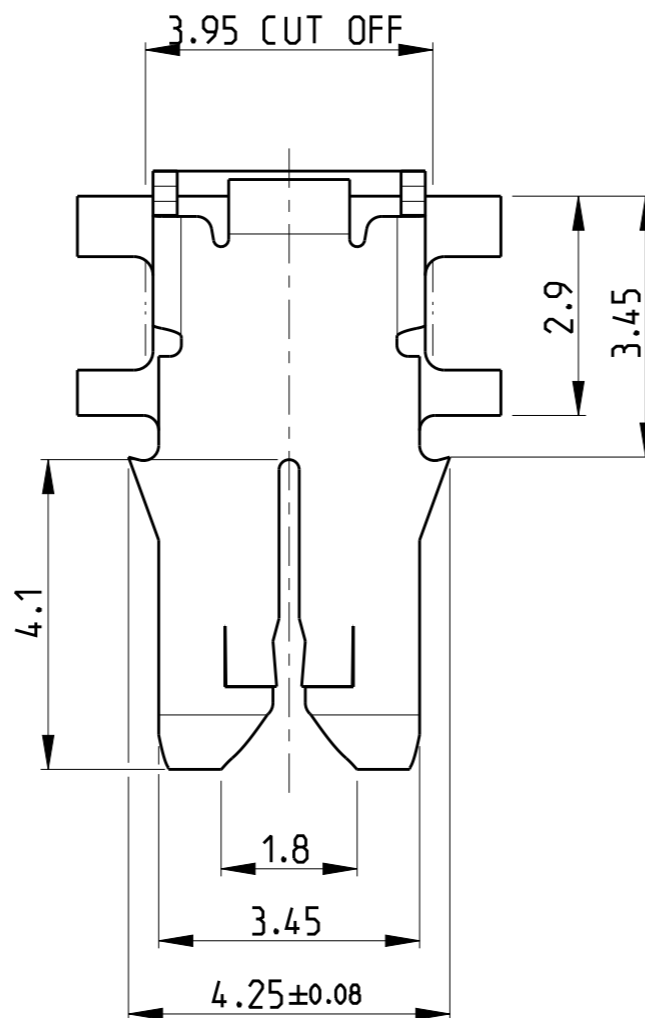
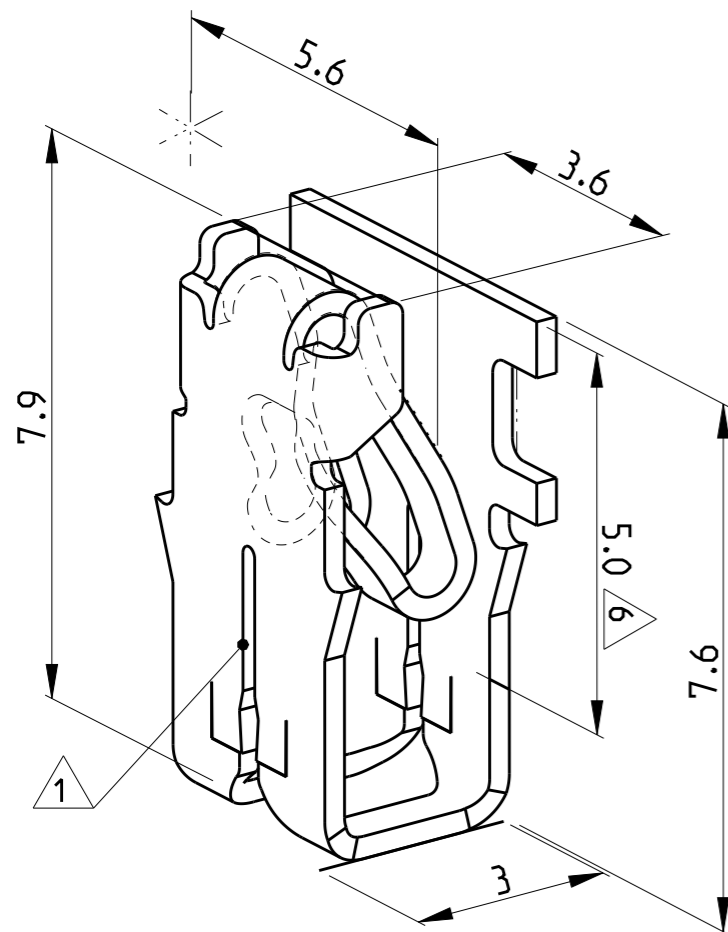


LOC	DIST	REVISIONS					
		P	LTR	DESCRIPTION	DATE	DWN	APVD
IR	-		D10	OBSOLETE 964339-6 AND UPDATE PACK 964339-3	02AUG2018	SV	PKS
			D11	ADDED FRONT VIEW AND DIMENSIONS	03JUNE2019	MB	PKS
			D12	3-964339-2 REMOVED FROM GENERAL SALES	29JAN2020	JA	PKS



- 1 SLOT ACCEPTS:
 SINGLE MAGNET WIRE Ø0.40...0.63
 DOUBLE MAGNET WIRE SAME DIAMETERS Ø0.40...0.56mm
 Kontakt geeignet fuer
 Lackdraht, Einzeldraht Ø0.40...0.63mm
 Lackdraht, zwei Draehle gleichen Durchmessers Ø0.40-0.56mm
- 2 POKE IN TAB TERMINAL 3.4x0.5mm
 Poke in Flachstecker 3.4x0.5mm
- 3 AREA WILL BE CUT BY TERMINATION
 Bereich wird beim Kontaktieren abgelrennt
- 4 CAVITY ACCORDING TO TE SPEC. 411-18512
 Kontakt Kammer nach TE Spec. 411-18512
- 5 IDENTIFICATION NO. FOR MAGNET WIRE RANGE (10)
 Kennziffer fuer Lackdrahtbereich (10)
- 6 OVER THE MARKED LENGTH:
 UNDER GOLD FILM
 SELECTIVE PALLADIUM OVER NICKEL
 Ueber die gekennzeichnete Laenge:
 Unter Goldschicht
 selekt. Palladium ueber Nickel
- 7 WORKING TEMPERATURE 150°C
 Einsatztemp. 150°C
- 8 REELED WITH PAPER INTERLAYER 0-737976-1
 ON PLASTIC REEL 1-725652-0
 Reeling mit Papierzwischenlage 0-737976-1
 auf Kunststoffspulen 1-725652-0
- 9 REELED WITH PAPER INTERLAYER 782504-5
 ON PLASTIC REEL 973053-3
 Reeling mit Papierzwischenlage 782504-5
 auf Kunststoffspulen 973053-3
- 10 REELED WITH PAPER INTERLAYER 1-782504-1
 ON PLASTIC REEL 725652-4
 Reeling mit Papierzwischenlage 1-782504-1
 auf Kunststoffspulen 725652-4
- 11 REELED WITH PAPER INTERLAYER 1-782504-1
 ON CARDBOARD REEL 973053-1
 Reeling mit Papierzwischenlage 1-782504-1
 auf Pappbandsputen 973053-1

	2-964339-7 ¹⁰	A	-	CuNiSi	FLASH GOLD OVER NICKEL	
	2-964339-2	A	-	CuNiSi	TIN PLATED	-
OBSOLETE	964339-7	B	6 7	CuNiSi		
OBSOLETE	964339-6	1		CuNiSi	NICKEL	
	964339-5 ¹¹	D	-	CuNiSi	vorverzinnt	-
	964339-3 ¹¹	C	-	CuZn	vorverzinnt	-
	964339-2	B	-	CuNiSi	vorverzinnt	-
	964339-1	B	-	CuNiSi	BLANK	-
	PART NO	REV.	PCS.	MATERIAL	SURFACE COLOUR	ITEM NO

THIS DRAWING IS A CONTROLLED DOCUMENT.

DWN: Rudolph 16-03-05
 CHK: H. Pölber 20-03-95
 APVD: -

PRODUCT SPEC: 108-2012
 APPLICATION SPEC: 114-2046
 WEIGHT: -

STE TE Connectivity

NAME: MAG MATE LEAF TERMINAL MARK II

SIZE: A3 CAGE CODE: 00779 DRAWING NO: C-964339 RESTRICTED TO: -

Customer Drawing SCALE 10:1 SHEET 1 OF 1 REV D12

DIMENSIONS:	TOLERANCES UNLESS OTHERWISE SPECIFIED:
mm	
	0 PLC ±.7
	1 PLC ±.7
	2 PLC ±.7
	3 PLC ±.7
	4 PLC ±.7
	ANGLES ±1°
MATERIAL	FINISH
SEE TABLE	SEE TABLE