

K Series, Rated up to 200 Amps, 28 Vdc

Product Facts

- Among the smallest and lightest 200 A aerospace-quality contactors available
- High-quality materials to help withstand harsh environments
- Environmentally sealed
- -55° to +85°C temperature range
- Shock and vibration resistant
- SPST, normally open
- 28 Vdc
- 200 A make/carry/break
- 1200 A inrush
- 2000 A maximum interrupt
- Electronically economized to reduce power

Standards/Specifications

- MIL-PRF-6106P** — General Performance Specification for Electromechanical Relays
- MIL-STD-202H** — Test Method for Electronic and Electrical Component Parts
- RTCA/DO-160F** — Environmental Conditions and Test Procedures for Airborne Equipment

Circuit Configurations

(Consult factory for other available circuit configurations)



Performance Data

Electrical Characteristics

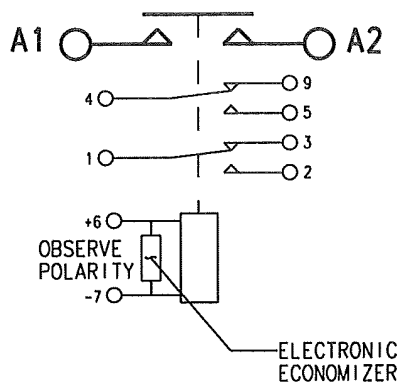
- Main Contacts** — 28 VDC SPST
Normally Open, Double Make
- Auxiliary Contacts** — two-pole, double-throw
- Economizer** — Electronically controlled
- Full Rupture Capability** — 2000 A (50 cycles per MIL-PRF-6106)
- Electrical Life** —
Full Rated Resistive Load — 50,000 cycles
25% Rated Resistive Load — 100,000 cycles
- Altitude** — 50,000 feet max.
- Current** — Resistive Load: 200 A
Motor Load — 1200 A/200 A (inrush/carry)
Rupture: 2000 A

General Characteristics

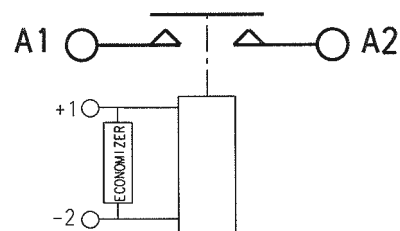
- Operating Temperature** — 55°C to +85°C
- Weight** —
K200A1C: 0.33 lbs (150 g)
K200B1C: 0.29 lbs (132 g)
K200A3C: 0.43 lbs (195 g)
K200B3C02: 0.40 lbs (181 g)

Coil Characteristics

- Nom. Operate Voltage** — 28 Vdc
- Pickup Voltage — 18 Vdc max.
- Drop Voltage — 1–9 Vdc
- Pickup Time — 15 ms
- Dropout Time — 15 ms
- Coil Current** —
Inrush — 5 A max. at 28 Vdc and 25°C
- Holding — 300 mA max. at 28 Vdc and 25°C
- Suppression — 45 Vdc



Circuit Configuration 1



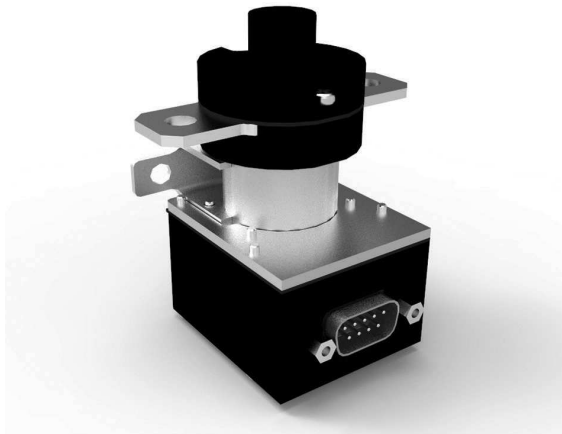
Circuit Configuration 2

Model	Mounting	Aux. Contacts	Part No.
K200A1C	Chassis	No	5-1616970-9
K200A3C	Chassis	Yes	8-1616977-1
K200B1C	Bus Bar	No	6-1616970-0
K200B3C02	Bus Bar	Yes	4-1616968-7

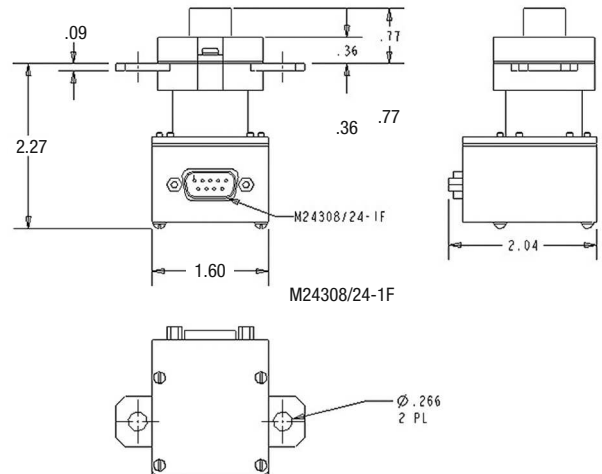
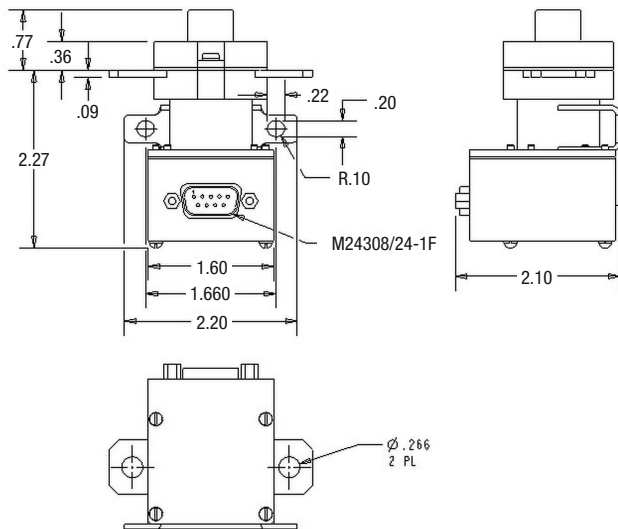
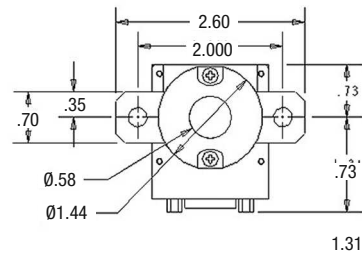
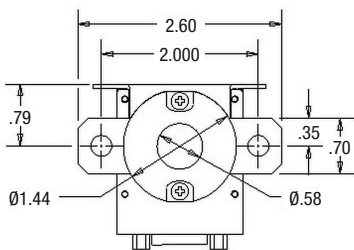
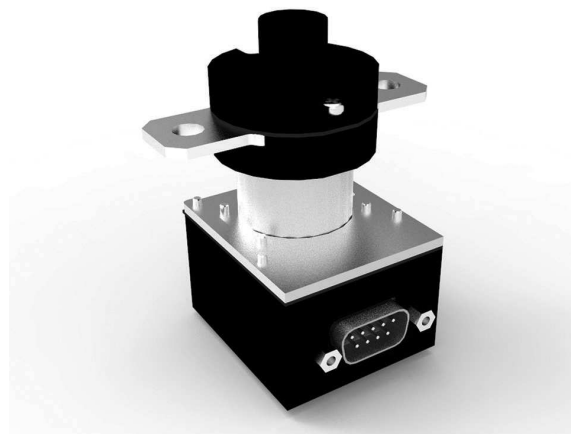
For factory-direct application assistance, phone 419-521-9500 or fax 419-526-2749.

K200 Series, Rated up to 200 Amps, 28 Vdc (Continued)

Chassis Mount



Bus Bar Mount



For factory-direct application assistance, phone 419-521-9500 or fax 419-526-2749.