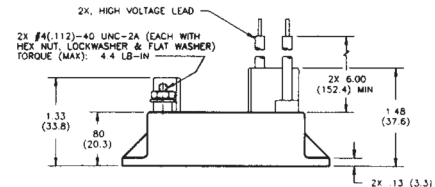
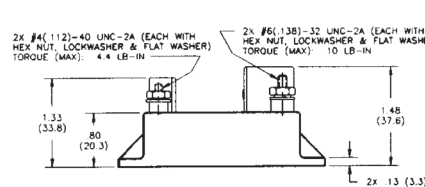
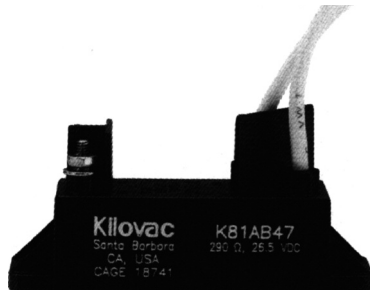
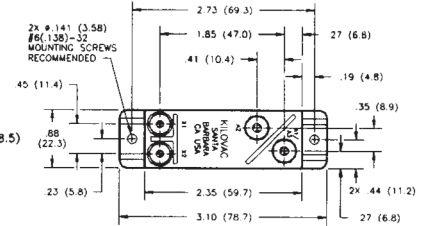
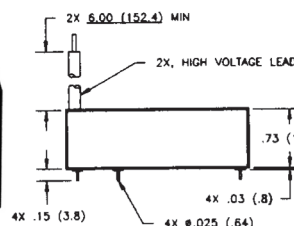
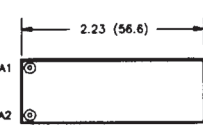
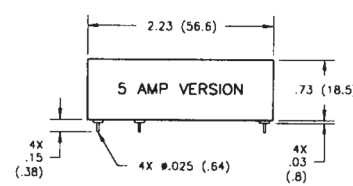
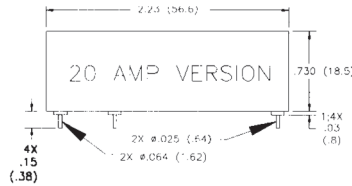
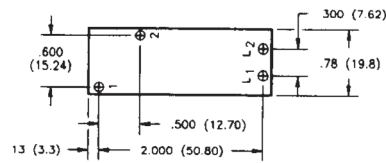
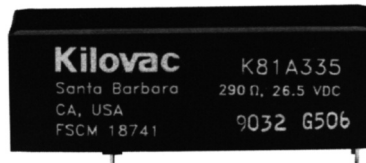


## K81 A/B Series Make & Break Load Switching — 10 kV Relays

### Product Facts

- 10 kV PC board-mount relay
- Vacuum dielectric for power switching low current loads
- Flying leads or PCB mount for high voltage connections
- Meets requirements of MIL-R-83725
- Completely sealed; suitable for test equipment
- Panel mount available for ease of mounting



### Product Specifications

#### Contact Arrangement —

K81A — SPST-NO  
K81B — SPST-NC

#### Contact Form —

K81A — A  
K81B — B

**Test Voltage, DC or 60 Hz (Peak)** — 11 kV

**Rated Operating Voltage (Peak)** — DC or 60 Hz — 10 kV

**Continuous Carry Current, Max.** — DC or 60 Hz — 5 A, 20 A or 30 A  
Coil Hi-Pot (Vrms, 60 Hz) — N/A

**Contact Resistance, Max.** — 0.03 ohm

**Operate Time, Max.** — 10 ms

**Release Time, Max.** — 10 ms

**Shock, 11ms, 1/2 Sine (Peak)** — 30 g

#### Vibration —

Peak — 10 g (55 to 500 Hz)

### Operating Ambient Temperature

Range — -55°C to +85°C

### Mechanical Life

— 2 million cycles

### Weight, Nominal —

56.7 g (2 oz.)

### Notes:

1. PC pin versions carry 5 or 20 Amps, see part number at right. Flying lead and panel versions carry 30 Amp.

\*Power terminal on 20 Amp version is a larger diameter than on the 5 Amp version (.025 = 5 Amp, .064 = 20 Amp)

### Coil Data

Volts, Nominal DC	12 V	26.5 V	115 V
Pickup, Max.	8 Vdc	16 Vdc	80 Vdc
Dropout	.5-5 Vdc	1-10 Vdc	5-50 Vdc
Coil Resistance (±10%)	70 Ω	290 Ω	4700 Ω

Ratings listed are for 25°C, sea level conditions

### Ordering Information

Sample Part Number ►

Series: \_\_\_\_\_

Contact Form: \_\_\_\_\_

A = SPST-NO      B = SPST-NC

Coil Voltage: \_\_\_\_\_

2 = 12 Vdc, PC Board      3 = 26.5 Vdc, PC Board

5 = 115 Vdc, PC Board

A = 12 Vdc, Stud Terminals, Panel Mount

B = 26.5 Vdc, Stud Terminals, Panel Mount

C = 115 Vdc, Stud Terminals, Panel Mount

High Voltage Connections: \_\_\_\_\_

A\* = PCB Solder Connection — 20 Amp

3 = PCB Solder Connection — 5 Amp

4 = Flying Leads

5 = Stud Terminals

Mounting: \_\_\_\_\_

5 = PC Board

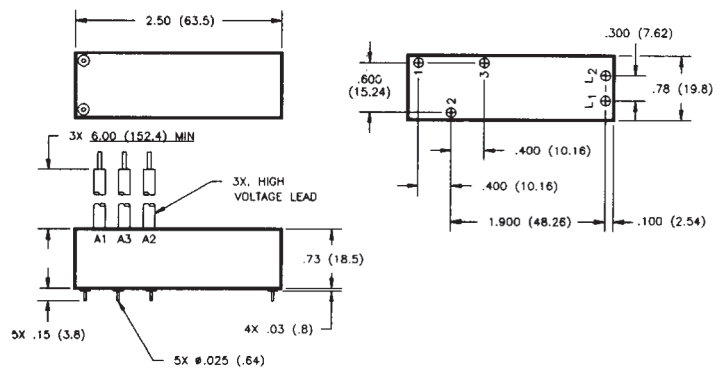
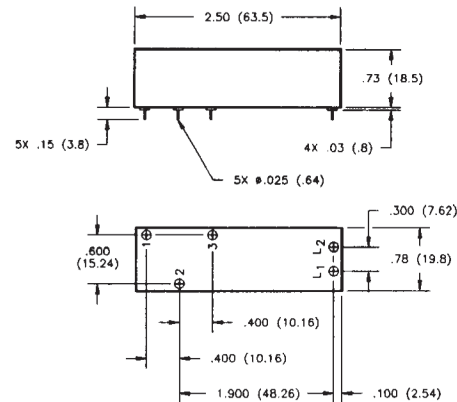
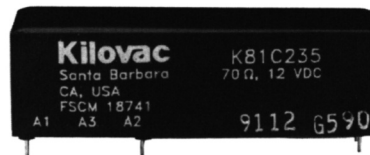
7 = Panel Mount

For factory-direct application assistance, dial 800-253-4560, ext. 2055, or 805-220-2055.

## K81C Series Make & Break Load Switching — 10 kV Relays

### Product Facts

- SPDT version of K81
- Vacuum dielectric for power switching low current loads
- Flying lead version will carry 10 Amps continuous current
- PCB mount version will carry 5 Amps continuous current



### Product Specifications

- Contact Arrangement** — SPDT  
**Contact Form** — C  
**Test Voltage, DC or 60 Hz (Peak)** — 11 kV  
**Rated Operating Voltage (Peak)** — DC or 60 Hz — 10 kV

- Continuous Carry Current, Max.** — DC or 60 Hz — See Note 1  
 Coil Hi-Pot (Vrms, 60 Hz) — N/A  
**Contact Resistance, Max.** — 0.05 ohm  
**Operate Time, Max.** — 10 ms  
**Release Time, Max.** — 10 ms

- Shock, 11ms, 1/2 Sine (Peak)** — 30 g  
**Vibration** — Peak — 10 g (55 to 500 Hz)  
**Operating Ambient Temperature Range** — -55°C to +85°C  
**Mechanical Life** — 2 million cycles  
**Weight, Nominal** — 70.87 g (2.5 oz.)

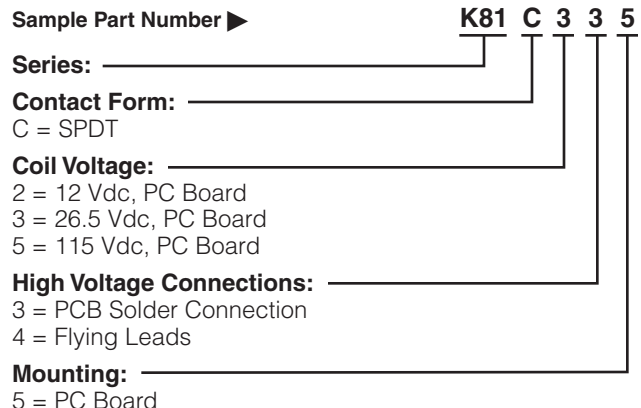
**Note:**  
 1. 5 Amp carry for PC pin versions.  
 30 Amp carry for flying lead versions.

### Coil Data

Volts, Nominal DC	12 V	26.5 V	115 V
Pickup, Max.	8 Vdc	16 Vdc	80 Vdc
Dropout	.5-5 Vdc	1-10 Vdc	5-50 Vdc
Coil Resistance (±10%)	70 Ω	290 Ω	4700 Ω

Ratings listed are for 25°C, sea level conditions

### Ordering Information



For factory-direct application assistance, dial 800-253-4560, ext. 2055, or 805-220-2055.