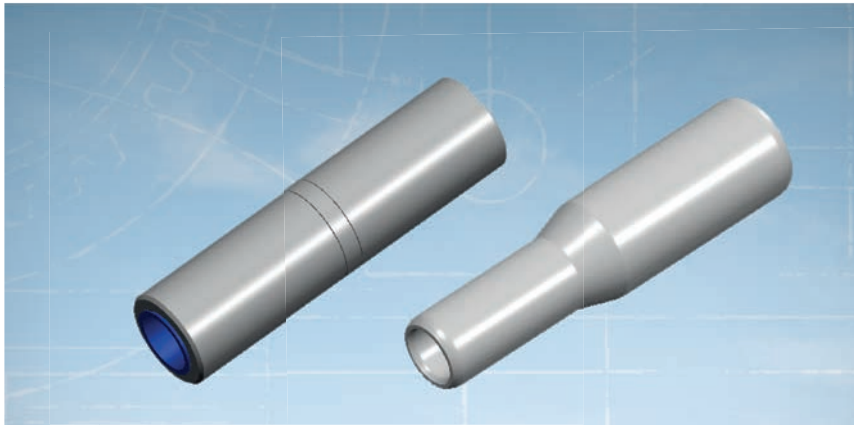




ALUMINUM COMPRESSION SLEEVES

(CSA dies)



TE Connectivity's (TE) compression splice sleeves are ideal for secondary distribution and overhead applications up to 35 kV. TE's aluminum compression sleeve connectors are available to accommodate a range of cable sizes from #4 AWG solid to 2000 kcmil aluminum. Use for terminating solid, compact and concentric stranded, class B conductors.

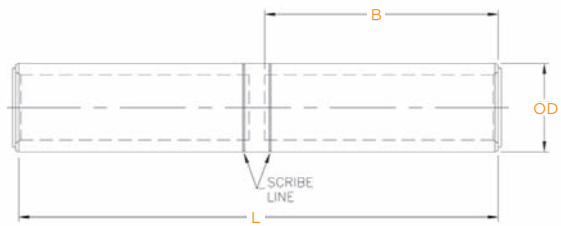
Compression of the terminal barrel creates a highly reliable connection that enables connector to perform well and at a lower temperature than the conductor during operation.

Connectors meet the requirement of ANSI C119.4, class A electrical and class 3 mechanical.

Key Features

- Easy to install using industry standard tools with CSA dies
- High conductivity aluminum alloy
- Low and Medium voltage applications
- Solid center stop
- Heavy wall design
- Seamless design
- Factory filled with inhibitor joint compound and capped
- Straight and reducer sleeve design
- Reducer connector for splicing two different wire sizes
- Non-tension application
- Conductor and die sizes marked on each terminal
- Scribe lines on connector body to identify the cable strip length and the start crimp line
- Tin plated/non plated versions available
- Barrel length allows for multiple crimp

Aluminum Compression Sleeves (CSA dies)



Selection information: dimensions in millimeters (in)

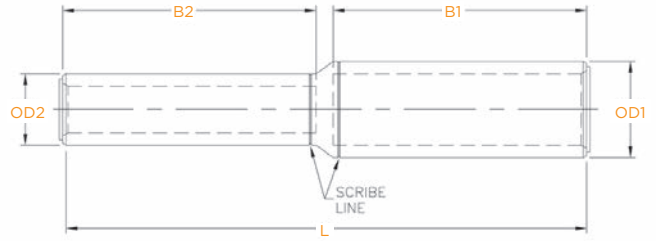
Aluminum Sleeve							
Catalog Number	Part Number	Conductor	Tin Plated	Dimensions			DIE index
				O.D.	B	L	
KJS4PTN	1099587-1	#4AWG - AL/CU - STD STR, COMPT	Yes	15.9 (0.63)	25.4 (1)	57.2 (2.25)	CSA 22
KSN1PTN	1098072-2	#1AWG - AL/CU - STD STR, COMPT , SOL	Yes	15.9 (0.63)	38.1 (1.5)	82.6 (3.25)	CSA 22
KJS10P	6-1199904-6	1/0AWG - AL/CU - COMPT.	No	15.9 (0.63)	25.4 (1)	57.2 (2.25)	CSA 22
KJS10TN	7-1199156-9	1/0AWG - AL/CU - COMPT.	Yes	15.9 (0.63)	35.1 (1.4)	76.2 (3)	CSA 22
KJS10PTN	8-1199475-5	1/0AWG - AL/CU - COMPT.	Yes	15.9 (0.63)	25.4 (1)	57.2 (2.25)	CSA 22
KJS10SPTTN	5-1199648-3	1/0AWG - AL/CU - SOL.	Yes	15.9 (0.63)	35.1 (1.38)	76.2 (3) x2	CSA 22
KJS10PTTN	1099586-1	1/0AWG - AL/CU - COMPT.	Yes	15.9 (0.63)	35.1 (1.38)	76.2 (3) x2	CSA 22
KSN10BCT	1099660-1	1/0AWG - AL/CU - COMPT.	No	15.9 (0.63)	45.8 (1.9)	101.6 (4)	CSA 22
KSN10STTN	1099663-1	1/0 AWG - AL - STD STR, COMPT , SOL	Yes	15.9 (0.63)	52.6 (2.07)	114.6 (4.51)	CSA 22
KSN10PTNT	1710672-1	1/0 AWG - AL/CU - STD STR, COMPT , SOL	Yes	15.9 (0.63)	47.8 (1.88)	101.6 (4) x2	CSA 22
KJS20PTTN	5-1199904-0	2/0 AWG - AL/CU - STD STR, COMPT.	Yes	21.0 (0.83)	47.8 (1.88)	101.6 (4) x2	CSA 24
KSN30PTN	1-1199019-5	3/0 AWG - AL - STD STR, COMPT , SOL	Yes	21.0 (0.83)	47.8 (1.88)	101.6 (4)	CSA 24
KSN30STTN	1099670-1	3/0 AWG - AL - STD STR, COMPT , SOL	Yes	21.0 (0.83)	55.1 (2.17)	119.4 (4.7)	CSA 24
KSN40P	1098067-1	4/0 AWG - AL - STD STR, COMPT , SOL	No	21.0 (0.83)	47.5 (1.87)	101.6 (4)	CSA 24
KSN40PTN	7-1199020-6	4/0 AWG - AL/CU - STD STR, COMPT.	Yes	21.0 (0.83)	47.8 (1.88)	101.6 (4)	CSA 24
KJS40PTN	5-1199156-9	4/0 AWG - AL/CU - STD STR, COMPT.	Yes	21.0 (0.83)	35.1 (1.38)	76.2 (3)	CSA 24
KJS40PTTN	6-1199929-2	4/0 AWG - AL/CU - STD STR, COMPT.	Yes	21.0 (0.83)	47.8 (1.88)	101.6 (4)	CSA 24
KSN025PTN	1099812-1	250 KCMIL - AL/CU - STD STR, COMPT , SOL	Yes	25.9 (1.02)	66.8 (2.63)	139.7 (5.5)	CSA 26
KSN035PT	1099887-1	350 KCMIL - AL/CU - STD STR, COMPT , SOL	No	30.9 (1.22)	58.4 (2.3)	127.0 (5)	CSA 28
KSN035PTN	1200025-4	350 KCMIL - AL/CU - STD STR, COMPT , SOL	Yes	30.9 (1.22))	66.8 (2.63)	139.7 (5.5)	CSA 26
KSN040PTN	1099653-1	400 KCMIL - AL - STD STR, COMPT , SOL	Yes	30.9 (1.22))	66.8 (2.63)	139.7 (5.5)	CSA 28
KSN050PTN	6-1199018-5	477-500 KCMIL - AL/CU - ASC	Yes	37.1 (1.46)	66.8 (2.63)	139.7 (5.5)	CSA 30
KSN050PT	1099887-2	500 KCMIL - AL/CU - STD STR, COMPT , SOL	No	37.1 (1.46)	58.4 (2.3)	127.0 (5)	CSA 30
KSN050CS	1099560-1	500 KCMIL - AL/CU - COMPT.	No	30.9 (1.22)	65.5 (2.62)	139.7 (5.5)	CSA 28
KSN050TTN	7-1199155-9	500 KCMIL - AL/CU - STD STR, COMPT	Yes	30.9 (1.22)	61.7 (2.43)	130.1 (5.12)	CSA 30
KSN075P	1099783-1	750 KCMIL - AL/CU - STD STR, COMPT , SOL	No	37.1 (1.46)	92.0 (3.62)	190.5 (7.5)	CSA 30
KSN075CS	1200430-8	750 KCMIL - AL - COMPT.	No	37.1 (1.46)	73.2 (2.88)	152.4 (6)	CSA 30
KSM075TTN	9-1199929-3	750 KCMIL - AL/CU - COMPT.	Yes	37.1 (1.46)	71.9 (2.83)	150.1 (5.91)	CSA 30
KSN075PTN	9-1199019-2	750 KCMIL - AL/CU - STD STR, COMPT. SOL	Yes	37.1 (1.46)	92.7 (3.63)	190.5 (7.5)	CSA 30
KSN075-BCT	1099621-1	750 KCMIL - AL/CU - COMPT.	No	37.1 (1.46)	69.9 (2.75)	165.1 (6.5)	CSA 30
KSN075C-BCT	1099942-1	750 KCMIL - AL/CU - COMPT.	No	37.1 (1.46)	73.7 (2.9)	152.4 (6)	CSA 30
KSN100CPT	1099887-3	1000 KCMIL - AL/CU - COMPT	No	40.6 (1.6)	83.8 (3.3)	177.8 (7)	CSA 32
KSN100STTN	1099970-1	1000 KCMIL - AL/CU - STD STR, COMPT , SOL	Yes	46.7 (1.84)	83.8 (3.3)	190.5 (7.5)	302 P44ART
KSN100CS-BD	1099882-1	1000 KCMIL - AL/CU - COMPT.	Yes	45.2 (1.78)	93.5 (3.68)	190.5 (7.5)	302*
KSN200STTN	1099664-1	2000 KCMIL - AL - STD STR.	Yes	69.9 (2.75)	144.0 (5.67)	294.4(11.59)	2 3/4 HEX*

TN suffix to the connector catalog number means tin-plated connector.

T suffix to connector catalog number means tapered.

* = Non-CSA dies, regular hexagonal dies

Aluminum Compression Sleeves (CSA dies)



Selection information: dimensions in millimeters (in)

Aluminum Reducer Sleeve							
Catalog Number	Part Number	Conductor	Tin Plated	Dimensions			DIE index
				O.D. (1-2)	B (1-2)	L	
KSR4P6TN	1710677-1	#4AWG TO #6AWG - AL/CU - STD STR.	Yes	15.9 (0.630)	38.1 (1.5)	82.6 (3.25)	CSA 22
KSR10P2	5-1199156-0	1/0AWG TO #2AWG - AL - STD STR,COMP,T,SOL.	No	15.9 (0.63)	47.5 (1.87)	101.6 (4)	CSA 22
KSR10P2TN	1-1199838-3	1/0AWG TO #2AWG - AL/CU - STD STR,COMP,T, SOL.	Yes	15.9 (0.63)	47.5 (1.87)	101.6 (4)	CSA 22
KJR10P2TTN	6-1199922-9	1/0AWG TO #2AWG - AL/CU - STD STR.	Yes	15.9 (0.63)	35.1 (1.38)	76.2 (3)	CSA 22
KSR20S1TN	1098080-2	2/0AWG TO #1AWG - AL/CU - STD STR, COMP.T.	Yes	15.9 (0.63)	47.8 (1.88)	104.1 (4.1)	CSA 22
KSR20P10TN	1098077-1	2/0AWG TO 1/0AWG - AL/CU - STD STR, COMP.T.	Yes	15.9 (0.63)	47.8 (1.88)	101.6 (4.0)	CSA 24
KSR30P4	1098076-1	3/0AWG TO #4AWG - AL/CU - STD STR, COMP.T.	No	21.0 (0.83)	47.5 (1.87)	101.6 (4.0)	CSA 24
KSR30P2TN	6-1199819-8	3/0AWG TO #2AWG - AL/CU - STD STR, COMP.T.	Yes	21.0 (0.83)	46.0 (1.81)	101.6 (4.0)	CSA 24
KSR30S2TN	1098081-2	3/0AWG TO #2AWG - AL/CU - STD STR, COMP.T.	Yes	21.0 (0.83)	47.8 (1.88)	104.1 (4.1)	CSA 24
KSR30P10TN	3-1199020-8	3/0AWG TO 1/0AWG - AL/CU - STD STR, COMP.T, SOL.	Yes	21.0 (0.83)	47.8 (1.88)	101.6 (4.0)	CSA 24
KSR40P2TN	1099617-1	4/0AWG TO #2AWG - AL/CU - STD STR, COMP.T, SOL	Yes	21.0 (0.83)	60.5 (2.38)	127.0 (5)	CSA 24
KSR40P1TN	1098063-2	4/0AWG TO #1AWG - AL/CU - STD STR, COMP.T.	Yes	21.0 (0.83)	60.2 (2.37)	127.0 (5)	CSA 24
KSR40P10	2-1199838-4	4/0AWG TO 1/0AWG - AL - STD STR, COMP.T.	No	21.0 (0.83)	60.2 (2.37)	127.0 (5)	CSA 24
KSR40P10TN	2-1200025-4	4/0AWG TO 1/0AWG - AL - STD STR, COMP.T.	Yes	21.0 (0.83)	59.2 (2.33)	127.0 (5)	CSA 24
KJR40P10TN	9-1199154-3	4/0AWG TO 1/0AWG - AL/CU - COMP.T.	Yes	21.0 (0.83)	47.8 (1.88)	101.6 (4)	CSA 24
KSR40P20TN	1098064-1	4/0AWG TO 2/0AWG - AL/CU - STD STR, COMP.T.	Yes	21.0 (0.83)	60.5 (2.38)	127.0 (5)	CSA 24
KJR40P20TTN	2-1199155-0	4/0AWG TO 2/0AWG - AL/CU - STD STR, COMP.T.	Yes	21.0 (0.83)	47.8 (1.88)	101.6 (4)	CSA 24
KSR40P30TN	6-1199020-2	4/0AWG TO 3/0AWG - AL/CU - STD STR, COMP.T, SOL.	Yes	21.0 (0.83)	47.8 (1.88)	101.6 (4)	CSA 24
KSR025P30TN	9-1199784-3	250KCMIL TO 3/0AWG - AL/CU - COMP.T.	Yes	25.9 (1.02)	47.5 (1.87)	101.6 (4)	CSA 26
KSR025P40TN	1098021-2	250KCMIL TO 4/0AWG - AL/CU - STD STR, COMP.T.	Yes	25.9 (1.02)	60.5 (2.38)	127.0 (5)	CSA 26
KSR025S40TN	1098078-2	250KCMIL TO 4/0AWG - AL/CU - STD STR, COMP.T.	Yes	25.9 (1.02)	60.5 (2.38)	132.1 (5.2)	CSA 26
KSR030S40TN	1098074-2	300KCMIL TO 4/0AWG - AL/CU - STD STR, COMP.T.	Yes	26.4 (1.04)	63.8 (2.51)/	139.7 (5.5)	CSA 26
KSR033S030TN	1098053-1	336.4KCMIL TO 300KCMIL - AL/CU - STD STR, COMP.T.	Yes	37.1 (1.46)	58.4 (2.3)	127.0 (5)	CSA 28
KSR035P10TN	1098056-1	350KCMIL TO 1/0AWG - AL/CU - STD STR, COMP.T.	Yes	31.0 (1.22)	59.9 (2.36)	133.6 (5.26)	CSA 28/26
KSR035P30TN	1098025-2	350KCMIL TO 3/0AWG - AL/CU - STD STR, COMP.T.	Yes	30.9 (1.22)/	61.7 (2.43)	130.1 (5.12)	CSA 28/26
KSR035P40TN	1098026-2	350KCMIL TO 4/0AWG - AL/CU - STD STR, COMP.T.	Yes	37.1 (1.46)	92.0 (3.62)	190.5 (7.5)	CSA 26
KSR035S40TN	1098075-2	350KCMIL TO 4/0AWG - AL/CU - STD STR, COMP.T.	Yes	30.9 (1.22)/	73.2 (2.88)	152.4 (6)	CSA 26
KSR035P025TN	1098023-2	350KCMIL TO 250KCMIL - AL/CU - STD STR, COMP.T.	Yes	37.1 (1.46)	71.9 (2.83)	150.1 (5.91)	CSA 28
KSR050S025TN	1099988-1	500KCMIL TO 250KCMIL - AL/CU - STD STR, COMP.T.	Yes	25.9 (1.02)	60.5 (2.38)	127.0 (5)	CSA 30
KSR050S035TN	2182117-2	500KCMIL TO 350KCMIL - AL/CU - STD STR, COMP.T.	Yes	26.4 (1.04)	63.8 (2.51)/	165.1 (6.5)	CSA 30/28
KSR075CS050C	1098083-1	750KCMIL TO 500KCMIL - AL - COMP.T.	No	37.1 (1.46)	73.7 (2.9)	152.4 (6)	CSA 30
KSR075P050	1098029-1	750KCMIL TO 500KCMIL - AL/CU - STD STR, COMP.T.	No	31.0 (1.22)	60.5 (2.38)	127.0 (5)	CSA 30
KJR075P050TTN	4-1199904-4	750KCMIL TO 500KCMIL - AL/CU - STD STR, COMP.T.	Yes	37.1 (1.46)	60.5 (2.38)	152.4 (6)	CSA 30
KSR050S035TN	2182117-2	500KCMIL TO 350KCMIL - AL/CU - STD STR, COMP.T.	Yes	37.1 (1.46)/ 30.9 (1.22)	66.0 (2.6)	144.0 (5.67)	CSA 30/28
KSR075CS050C	1098083-1	750KCMIL TO 500KCMIL - AL - COMP.T.	No	37.1 (1.46)	69.9 (2.75)	152.4 (6)	CSA 30
KSR075P050	1098029-1	750KCMIL TO 500KCMIL - AL/CU - STD STR, COMP.T.	No	37.1 (1.46)	108.0 (4.25)	222.3 (8.75)	CSA 30
KJR075P050TTN	4-1199904-4	750KCMIL TO 500KCMIL - AL/CU - STD STR, COMP.T.	Yes	37.1 (1.46)	79.2 (3.12)/ 64.3 (2.53)	149.9 (5.9)	CSA 30

FOR MORE INFORMATION: TE Technical Support Centers

USA:	+ 1 800 327 6996
France:	+ 33 380 583 200
UK:	+ 44 0870 870 7500
Germany:	+ 49 896 089 903
Spain:	+ 34 916 630 400
Italy:	+ 39 333 250 0915
Benelux:	+ 32 16 508 695
Canada:	+ 1 (905) 475-6222
Mexico:	+ 52 (0) 55-1106-0800
Latin/S. America:	+ 54 (0) 11-4733-2200
China:	+ 86 (0) 400-820-6015

te.com/energy

© 2018 TE Connectivity. All Rights Reserved. EPP-3015-E836-9/18

TE Connectivity and TE connectivity (logo) are trademarks. Other logos, product and/or company names might be trademarks of their respective owners. While TE has made every reasonable effort to ensure the accuracy of the information in this brochure, TE does not guarantee that it is error-free, nor does TE make any other representation, warranty or guarantee that the information is accurate, correct, reliable or current. TE reserves the right to make any adjustments to the information contained herein at any time without notice. TE expressly disclaims all implied warranties regarding the information contained herein, including, but not limited to, any implied warranties of merchantability or fitness for a particular purpose. The dimensions in this catalog are for reference purposes only and are subject to change without notice. Specifications are subject to change without notice. Consult TE for the latest dimensions and design specifications.