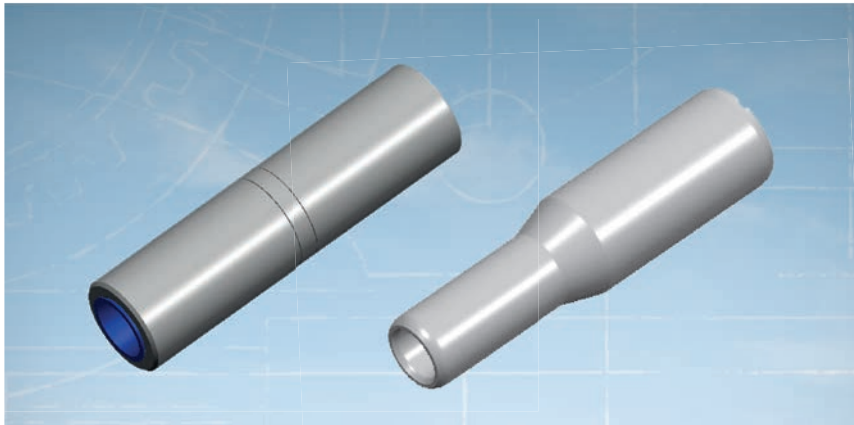




COPPER COMPRESSION SPLICE CONNECTORS

(CSA dies)



TE Connectivity's (TE) compression splice connectors are ideal for secondary distribution and overhead applications up to 35 kV. Copper compression splices connectors are available to accommodate a range of cable sizes from #4 AWG solid to 1500 kcmil copper. Use for splicing solid, compact and concentric stranded, class B conductors.

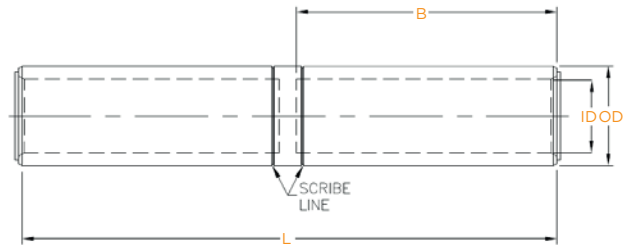
Compression of the splice barrel creates a highly reliable connection that enables connector to perform well and at a lower temperature than the conductor during operation.

Connectors meet the requirement of ANSI C119.4, class A electrical and class 3 mechanical.

Key Features

- Easy to install using industry standard tools with CSA dies
- High conductivity ETP copper alloy
- Straight and reducers sleeve designs
- Reducer connector for splicing two different wire sizes
- Solid center stop
- Heavy wall design
- Non-tension application
- Conductor and die sizes marked on each terminal
- Tin plated/non plated versions available
- Scribe lines on connector body to identify the cable strip length and the start crimp line
- Barrel length allows for multiple crimps

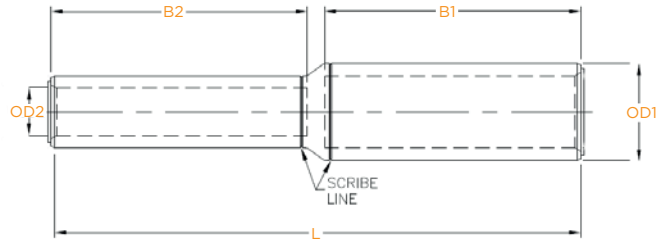
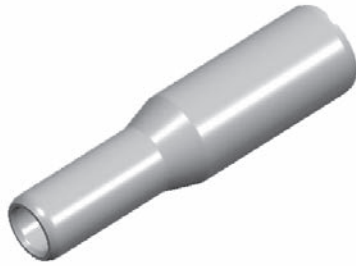
Copper Compression Splice Connectors (CSA dies)



Selection information: dimensions in millimeters (in)

Copper Sleeve							
Catalog Number	Part Number	Conductor	Tin Plated	Dimensions			DIE index
				O.D.	B	L	
CKSN4PTN	1098042-1	#4 AWG CU	Yes	15.9 (0.62)	36.3 (1.43)	78.7 (3.1)	CSA 22 CU
CKSN2P	3-1199156-8	#2 AWG CU	No	15.9 (0.62)	38.1 (1.5)	82.6 (3.25)	CSA 22 CU
CKSN2PTN	1098043-1	#2 AWG CU	Yes	15.9 (0.62)	38.1 (1.5)	82.6 (3.25)	CSA 22 CU
CKSN10P	3-1199020-1	1/0 AWG CU	No	16.7 (0.66)	54.1 (2.13)	114.3 (4.5)	CSA 22 CU
CKSN10PTN	1099675-1	1/0 AWG CU 7 STR	Yes	16.7 (0.66)	54.1 (2.13)	114.3 (4.5)	CSA 22 CU
CKSN10STN	1099494-1	1/0 Solid CU	Yes	16.7 (0.66)	54.1 (2.13)	118.6 (24.67)	CSA 22 CU
CKSN20P	1099800-1	2/0 AWG CU	No	16.7 (0.66)	54.1 (2.13)	114.3 (4.5)	CSA 22 CU
CKSN30PTN	1099676-1	3/0 AWG CU, 19 STR	Yes	17.5 (0.69)	54.1 (2.13)	114.3 (4.5)	CSA 22 CU
CKSN30STNT	2182414-2	3/0 AWG CU	Yes	17.5 (0.69)	53.1 (2.09)	114.3 (4.5)	CSA 22 CU
CKSN40P	4-1199019-8	4/0 AWG CU	No	21.4 (0.84)	63.5 (2.5)	133.3 (5.25)	CSA 22 CU
CKSN40PTN	1098044-1	4/0 AWG CU 19 STR	Yes	21.4 (0.84)	63.5 (2.5)	133.3 (5.25)	CSA 22 CU
CKSN025P	8-1199019-3	250 Kcmil CU	No	21.4 (0.84)	63.5 (2.5)	133.3 (5.25)	CSA 22 CU
CKSN030PTN	1099673-2	300 Kcmil CU	Yes	26.2 (1.03)	61.2 (2.41)	128.8 (5.07)	CSA 26 CU
CKSN030STN	1098095-2	300 Kcmil CU	Yes	26.2 (1.03)	61.2 (2.41)	134.6 (5.3)	CSA 26 CU
CKSN035P	5-1199018-1	350 Kcmil CU	No	26.2 (1.03)	63.5 (2.5)	133.6 (5.25)	CSA 26 CU
CKSN035STNT	1099448-1	350 Kcmil CU	Yes	26.2 (1.03)	63.5 (2.5)	138.4 (5.45)	CSA 26 CU
CKSN050P	4-1199019-5	500 Kcmil CU	No	31.8 (1.25)	63.5 (2.5)	133.6 (5.25)	CSA 28 CU
CKSN050PTNT	1710658-1	500 Kcmil CU	Yes	31.8 (1.25)	66.8 (2.63)	139.7 (5.5)	CSA 28 CU
CKSN050STN	1-1199354-6	500 Kcmil CU	Yes	31.8 (1.25)	66.8 (2.63)	139.7 (5.5)	CSA 28 CU
CKSN060P	2-1199156-2	600 Kcmil CU	No	31.8 (1.25)	79.5 (3.13)	165.1 (6.5)	CSA 28 CU
CKSN060PTN	1098089-1	600 Kcmil CU	Yes	31.8 (1.25)	79.5 (3.13)	165.1 (6.5)	CSA 28 CU
CKSN100PTN	1098090-1	1000 Kcmil CU	Yes	47.6 (1.87)	73.2 (2.88)	152.4 (6)	CSA 34 CU
CKSN100STNT	1099449-1	1000 Kcmil CU	Yes	47.6 (1.87)	85.9 (3.38)	194.8 (7.67)	CSA 34 CU
CKSN100ST	1099449-2	1000 Kcmil CU	No	47.6 (1.87)	85.9 (3.38)	194.8 (7.67)	CSA 34 CU
CKSN125STN	2182064-2	1250 Kcmil CU	Yes	48.3 (1.9)	91.4 (3.6)	190.5 (7.5)	CSA 34 CU
CKSN150STTN	1099682-1	1500 Kcmil CU	Yes	54.6 (2.15)	101.4 (4.0)	223.5 (8.8)	CSA 36 CU

Copper Compression Splice Connectors (CSA dies)



Selection information: dimensions in millimeters (in)

Copper Reducer Sleeve							
Catalog Number	Part Number	Conductor	Tin Plated	Dimensions			DIE index
				O.D. (1-2)	B (1-2)	L	
CKSR10P2	4-1199980-4	1/0 AWG to #2 AWG	No	16.7 (0.66)	50.0 (1.97)	101.6 (4)	CSA 22 CU
CKSR20S2	1098049-1	2/0 AWG to #2 AWG	No	16.7 (0.66)	53.3 (2.1)	114.3 (4.5)	CSA 22 CU
CKSR20S10	1099758-1	2/0 AWG to 1/0 AWG	No	17.1 (0.67)	50.8 (2)	114.3 (4.5)	CSA 22 CU
CKSR30S20TNT	1099441-1	3/0 AWG to 2/0 AWG	Yes	16.9 (0.67)	53.1 (2.09)	114.3 (4.5)	CSA 22 CU
CKSR025S10TNT	2182390-2	250 kcmil to 1/0 AWG	Yes	21.4 (0.84)	54.6 (2.15)/47.5 (1.87)	111.8 (4.4)	CSA 24 CU
CKSR025S30TNT	1099443-1	250 kcmil to 3/0 AWG	Yes	21.4 (0.84)/17.0 (0.67)	57.7 (2.27)/47.5 (1.87)	114.3 (4.5)	CSA 24/22 CU
CKSR035S30TNT	1099444-1	350 kcmil to 3/0 AWG	Yes	26.2 (1.03)/21.2 (0.83)	59.9 (2.36)/50.0 (1.97)	114.3 (4.5)	CSA 26/24 CU
CKSR050S20TNT	1710907-1	500 kcmil to 2/0 AWG	Yes	31.8 (1.25)/21.2 (0.83)	63.0 (2.48)/53.3 (2.10)	132.6 (5.22)	CSA 28/24 CU
CKSR050S30TNT	1099446-1	500 kcmil to 3/0 AWG	Yes	31.8 (1.25)/21.2 (0.83)	63.0 (2.48)/53.3 (2.10)	158.0 (6.22)	CSA 28/24 CU
CKSR050P40	1099626-1	500 kcmil to 4/0 AWG	No	31.8 (1.25)	59.9 (2.36)	139.7 (5.5)	CSA 28 CU
CKSR050S025TNT	1099442-1	500 kcmil to 250 kcmil	Yes	31.8 (1.25)/25.9 (1.02)	62.0 (2.44)	139.7 (5.5)	CSA 28/26 CU
CKSR050S035TNT	1099447-1	500 kcmil to 350 kcmil	Yes	31.8 (1.25)/25.9 (1.02)	63.0 (2.48)	136.4 (5.37)	CSA 28/26 CU
CKSR050P035STN	1-1200092-9	500 kcmil to 350 kcmil	Yes	31.8 (1.25)	66.8 (2.63)	139.7 (5.5)	CSA 28 CU
CKSR060S050TNT	1099445-1	600 kcmil to 500 kcmil	Yes	31.8 (1.25)	78.0 (3.07)/63.0 (2.48)	158.8 (6.25)	CSA 28 CU
CKSR075S050TN	1098073-2	750 kcmil to 500 kcmil	Yes	38.1 (1.5)	67.6 (2.66)/68.6 (2.70)	152.4 (6)	CSA 30 CU
CKSR075S050TTN	1099366-1	750 kcmil to 500 kcmil	Yes	38.1 (1.5)/31.8 (1.25)	88.9 (3.5)/7.2 (2.88)	177.8 (7)	CSA 30 / 28 CU
CKSR075S050TNT	1710664-1	750 kcmil to 500 kcmil	Yes	38.1 (1.5)	67.6 (2.66)/68.6 (2.70)	152.4 (6)	CSA 30 CU
CKSR100S075TNT	1099450-1	1000 kcmil to 750 kcmil	Yes	47.6 (1.87)/38.1 (1.50)	85.6 (3.37)	193.6 (7.62)	CSA 34 / 30 CU

TN suffix to the connector catalog number means tin-plated connector.
T suffix to connector catalog number means tapered.

te.com/energy

©2018 TE Connectivity. All Rights Reserved. EPP-3017-E838-9/18

TE Connectivity and TE connectivity (logo) are trademarks. Other logos, product and/or company names might be trademarks of their respective owners. While TE has made every reasonable effort to ensure the accuracy of the information in this brochure, TE does not guarantee that it is error-free, nor does TE make any other representation, warranty or guarantee that the information is accurate, correct, reliable or current. TE reserves the right to make any adjustments to the information contained herein at any time without notice. TE expressly disclaims all implied warranties regarding the information contained herein, including, but not limited to, any implied warranties of merchantability or fitness for a particular purpose. The dimensions in this catalog are for reference purposes only and are subject to change without notice. Specifications are subject to change without notice. Consult TE for the latest dimensions and design specifications.

FOR MORE INFORMATION: TE Technical Support Centers

USA: + 1 800 327 6996
 France: + 33 380 583 200
 UK: + 44 0870 870 7500
 Germany: + 49 896 089 903
 Spain: + 34 916 630 400
 Italy: + 39 333 250 0915
 Benelux: + 32 16 508 695
 Canada: + 1 (905) 475-6222
 Mexico: + 52 (0) 55-1106-0800
 Latin/S. America: + 54 (0) 11-4733-2200
 China: + 86 (0) 400-820-6015