

COMMON SPECIFICATION	
INPUT VOLTAGE	3.0 Vrms
INPUT FREQUENCY	2.5 to 3.0 kHz
NONLINEARITY	+0.25% OF FULL RANGE (MAX)
OPERATING TEMPERATURE	-55°C TO +200°C (-65°F TO +400°F)
SHOCK SURVIVAL	1000 gs., 11 ms
VIBRATION TOLERANCE	20 g TO 2 kHz

- NOTES:  
 1. ELECTRO-ETCH THE FOLLOWING:  
 TE CONNECTIVITY  
 HERMOSILLO, MEXICO  
 HSTAR 750 XXXXX  
 SERIAL NO. XXXXX

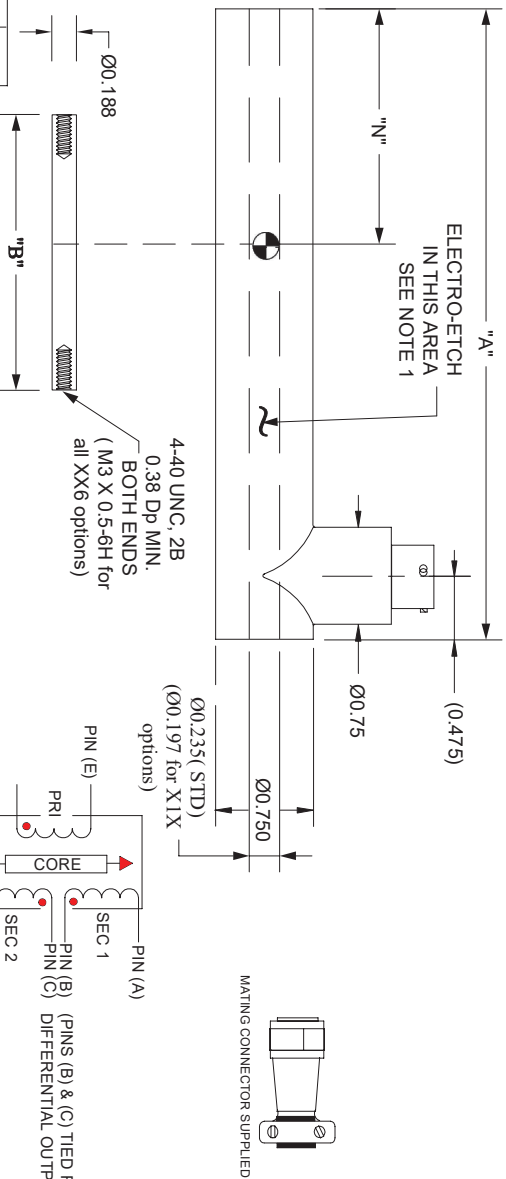
2. SEE SHT 2 FOR PART NO. MATRIX.  
 3 DIM "N" = CENTER OF CORE AT NULL

DESCRIPTION	LTR DIMENSIONS		
	BODY DIM "A" ±0.03	DIM "N" NULL	CORE DIM "B" DIM "B"
HSTAR 750 050	2.01 (51.1)	0.63 (16)	0.800 (20.3)
HSTAR 750 125	2.64 (67.1)	0.94 (24)	1.250 (31.8)
HSTAR 750 250	SEE OUTLINE DWG 0109 1452 0000		
HSTAR 750 500	SEE OUTLINE DWG 0109 1453 0000		
HSTAR 750 1000	SEE OUTLINE DWG 0109 1454 0000		
HSTAR 750 2000	10.91 (277.1)	5.07 (129)	5.300 (134.6)
HSTAR 750 3000	13.65 (346.1)	6.29 (160)	6.200 (157.5)
HSTAR 750 4000	16.17 (411)	7.65 (194)	6.200 (157.5)
HSTAR 750 5000	18.65 (473.7)	8.94 (227)	6.200 (157.5)
HSTAR 750 7500	23.85 (606)	11.52 (293)	7.000 (177.8)
HSTAR 750 10000	31.66 (804)	15.42 (392)	9.500 (241.3)

DESCRIPTION	IMPEDANCE	
	PRIMARY (Q)	SECONDARY (Q)
HSTAR 750 050	325 OHMS	2000 OHMS
HSTAR 750 125	735 OHMS	2750 OHMS
HSTAR 750 250	SEE OUTLINE DWG 0109 1452 0000	
HSTAR 750 500	SEE OUTLINE DWG 0109 1453 0000	
HSTAR 750 1000	SEE OUTLINE DWG 0109 1454 0000	
HSTAR 750 2000	575 OHMS	281 OHMS
HSTAR 750 3000	1200 OHMS	1540 OHMS
HSTAR 750 4000	420 OHMS	450 OHMS
HSTAR 750 5000	600 OHMS	550 OHMS
HSTAR 750 7500	500 OHMS	577 OHMS
HSTAR 750 10000	650 OHMS	730 OHMS

DESCRIPTION	STANDARD			METRIC		
	ELECTRICAL STROKE	SENSITIVITY mV/V/001 in.	ELECTRICAL STROKE	SENSITIVITY mV/mm	PHASE SHIFT	
HSTAR 750 050	±0.125 INCH	6.1	±1.3 mm	240	+1°	
HSTAR 750 125	±0.125 INCH	3.9	±3.0 mm	154	-5°	
HSTAR 750 250	SEE OUTLINE DWG 0109 1452 0000					
HSTAR 750 500	SEE OUTLINE DWG 0109 1453 0000					
HSTAR 750 1000	SEE OUTLINE DWG 0109 1454 0000					
HSTAR 750 2000	±2.0 INCH	0.20	±50 mm	8.0	0°	
HSTAR 750 3000	±3.0 INCH	0.21	±75 mm	8.3	+2°	
HSTAR 750 4000	±4.0 INCH	0.17	±100 mm	6.7	-4°	
HSTAR 750 5000	±5.0 INCH	0.11	±125 mm	4.3	0°	
HSTAR 750 7500	±7.5 INCH	0.11	±180 mm	4.3	+2°	
HSTAR 750 10000	±10.0 INCH	0.07	±250 mm	2.8	-3°	

REVISIONS		DWG NO.	010914XXXXXX	
ZONE	REV	DESCRIPTION	DATE	APPROVED
--	--	INITIAL RELEASE	02/21/08	MFG/ALJ
A		CORRECT SENSITIVITY PER ECN 1174/ALJ		
B		Add Metric Core, TBL per ecn 1366	09/17/09	LHP
C		UPDATED HSTAR 750 1000, per ecn 1457	10/18/10	MFG
D		REVISED PER ECN #1749	03/05/12	DSC
E		REVISED PER ECN #1792	07/25/12	LHP
F		REVISED PER ECN #2003	03-JUN-2014	NM
G		REVISED PER ECN #2227	20-JUN-2017	DSC
G1		REDRAWN WITH NO CHANGES	13-NOV-2020	



1] DENOTES MILLIMETERS

⊕ DENOTES CENTER OF CORE AT ELECTRICAL MID POINT

UNLESS OTHERWISE SPECIFIED, DIMENSIONS ARE IN INCHES. TOLERANCES ARE:

ANGLES : ±2° FRACTIONS : ± 1/64  
 DECIMALS : .XX ± .010  
 MATERIAL : .XXX ± .005

FINISH :		APPROVED:	DATE:	SIZE/FSM NO.	DWG NO.	SCALE: NTS (1/1)	SHEET NO: 1 OF 2
		A.L.J.	19 FEB 08	A 06WW0	010914XXXXXX	TurboCAD	G1

**TE** TRIMBLE ELECTRIC COMPANY

TITLE: **OUTLINE**  
**HSTAR-750 SERIES**

A B C D E F G H


1 2 3 4 5 6

This Drawing & Specifications are the property of Macro Sensors. DO NOT COPY without the written approval of Macro Sensors.

REVISIONS		DWG NO.	010914XXXXXX	
ZONE	REV	DESCRIPTION	DATE	APPROVED
		FOR REVISION, SEE SHT 1	20-JAN-2017	

**MODEL OPTIONS (STD. - 016)**

STANDARD	PART NO.	METRIC DISPL. / METRIC CORE (-006)	PART NO.	TEFLON BORELINER (-010)	PART NO.	METRIC CORE + TEFLON BORELINER (-016)
DESCRIPTION		DESCRIPTION		DESCRIPTION		
HSTAR 750 050	0103 1450 0000	HSTAR 750 050-006	0103 1450 0006	HSTAR 750 050-010	TBD	HSTAR 750 050-016
HSTAR 750 125	0103 1451 0000	HSTAR 750 125-006	0103 1451 0006	HSTAR 750 125-010	TBD	HSTAR 750 125-016
HSTAR 750 250						
HSTAR 750 500						
HSTAR 750 1000						
HSTAR 750 2000	0103 1455 0000	HSTAR 750 2000-006	0103 1455 0006	HSTAR 750 2000-010	TBD	HSTAR 750 2000-016
HSTAR 750 3000	0103 1456 0000	HSTAR 750 3000-006	0103 1456 0006	HSTAR 750 3000-010	0103 1456 0010	HSTAR 750 3000-016
HSTAR 750 4000	0103 1457 0000	HSTAR 750 4000-006	0103 1457 0006	HSTAR 750 4000-010	TBD	HSTAR 750 4000-016
HSTAR 750 5000	0103 1458 0000	HSTAR 750 5000-006	TBD	HSTAR 750 5000-010	0103 1458 0010	HSTAR 750 5000-016
HSTAR 750 7500	0103 1459 0000	HSTAR 750 7500-006	TBD	HSTAR 750 7500-010	11150036-00	HSTAR 750 7500-016
HSTAR 750 10000	0103 1460 0000	HSTAR 750 10000-006	0103 1460 0006	HSTAR 750 10000-010	0103 1460 0010	HSTAR 750 10000-016

UNLESS OTHERWISE SPECIFIED, DIMENSIONS ARE IN INCHES. TOLERANCES ARE:		DRAFTER: A.L.J.	DATE: 09 JUL 2007	 <small>TRIPLE COMBINATION COUPLERS</small>
ANGLES: ±2° FRACTIONS: ±1/84		CHECKER:	DATE:	
DECIMALS: .XX ±.010		APPROVED: M.F.G.	DATE: 31 JUL 2007	<b>TITLE:</b> <b>OUTLINE</b> <b>HSTAR-750 SERIES</b>
MATERIAL: .XXX ±.005		APPROVED:	DATE:	
FINISH:		APPROVED:	DATE:	SIZE FSCM NO. <b>A</b> DWG NO. <b>06WW0</b> SCALE: NTS (1/1) TurbocAD SHEET NO. 2 OF 2

This Drawing & Specifications are the property of Macro Sensors. DO NOT COPY without the written approval of Macro Sensors.