

SPECIFICATIONS

- 1 INPUT VOLTAGE: 2.8 V rms (NOM) (8 V p-p)
- INPUT FREQUENCY: 12.5 kHz(NOM)
- ELECTRICAL STROKE: ±20.0 mm [F0.787]
- SENSITIVITY: 56.7 mV/VOLT/mm NOM
- NON-LINEARITY: 2% OF FULL RANGE (MAX)
- PHASE SHIFT: +3.5°
- IMPEDANCE:
 - PRIMARY: 143 OHM (NOM)
 - SECONDARY: 500 OHM (NOM)
- OPERATING TEMP: -55°C TO 150°C
- SHOCK SURVIVAL: 1000 g's, 11ms
- VIBRATION TOL: 20g UP TO 2000 Hz

NOTES:

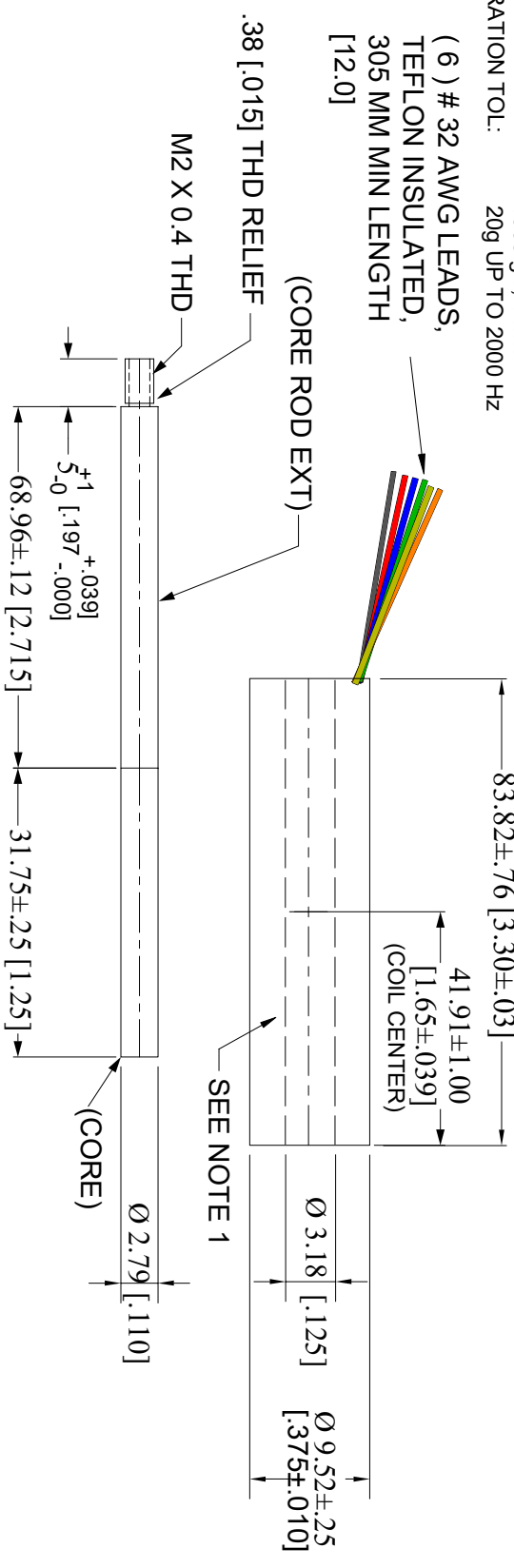
1. ELECTRO-ETCH (APPROX AREA AS SHOWN) WITH FOLLOWING:
TE CONNECTIVITY
HERMOSILLO MEXICO
CDM 375-500-0861
SN XXXXXXXX

REVISIONS

ZONE	REV	DESCRIPTION	DATE	APPROVED
--	--	INITIAL RELEASE	18-JAN-2010	DSC
--	A	REVISED PER ECN# 1436	20-SEP-2010	DSC
--	B	REVISED PER ECN# 1573	30-MAR-2011	
--	B1	REDRAWN WITH NO CHANGES	27-NOV-2020	

DWG NO.

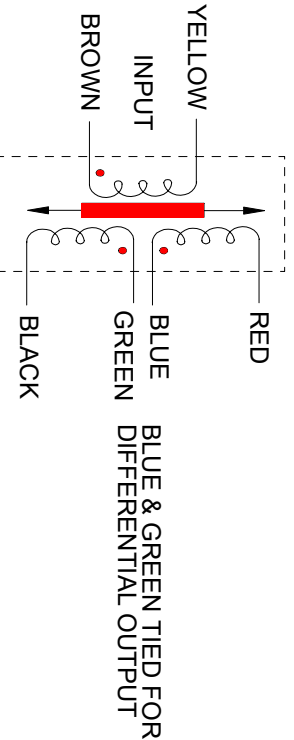
015912160861



METRIC [INCH]

SHOWS PART NO. 015312160861

WIRING DIAGRAM



This Drawing & Specifications are the property of TE Connectivity, Div of Howard A. Schaeffler Technologies, Inc. DO NOT COPY without the written approval of TE Connectivity.

UNLESS OTHERWISE SPECIFIED, DIMENSIONS ARE IN INCHES. TOLERANCES ARE:

ANGLES : ± 2° FRACTIONS : ± 1/64
 DECIMALS : .XX ± .010
 .XXX ± .005

MATERIAL : _____
FINISH : _____

DRAWER: DSC	DATE: 13-JAN-2010	TITLE: OUTLINE; CDM-375-500-0861
CHECKER: _____	DATE: _____	DATE: 18-JAN-2010
APPROVED: MFG	DATE: 14-JAN-2010	SIZE: FSCM NO. A
APPROVED: JLANG	DATE: 18-JAN-2010	SCALE: NTS (1/1)
APPROVED: _____	DATE: _____	DWG NO.: 015912160861
		REV: B1