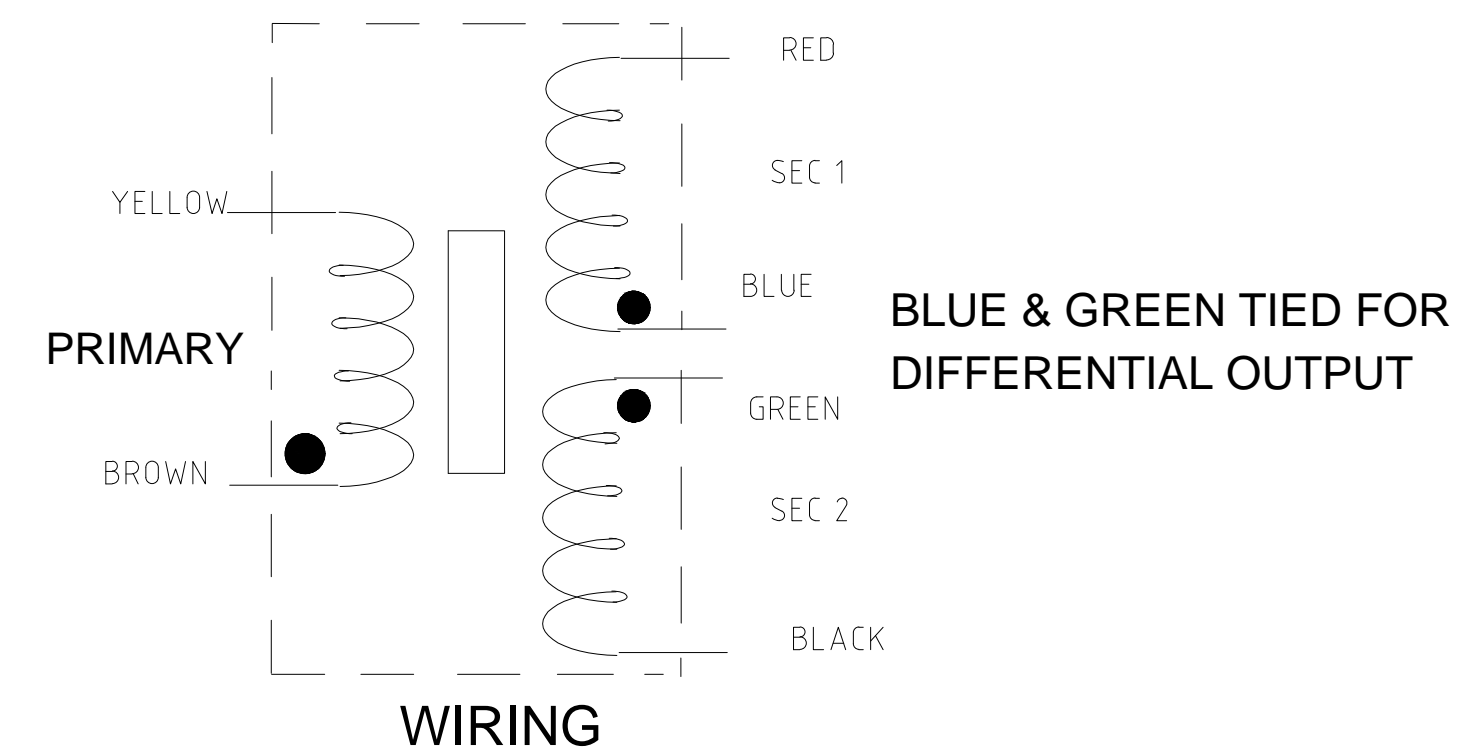
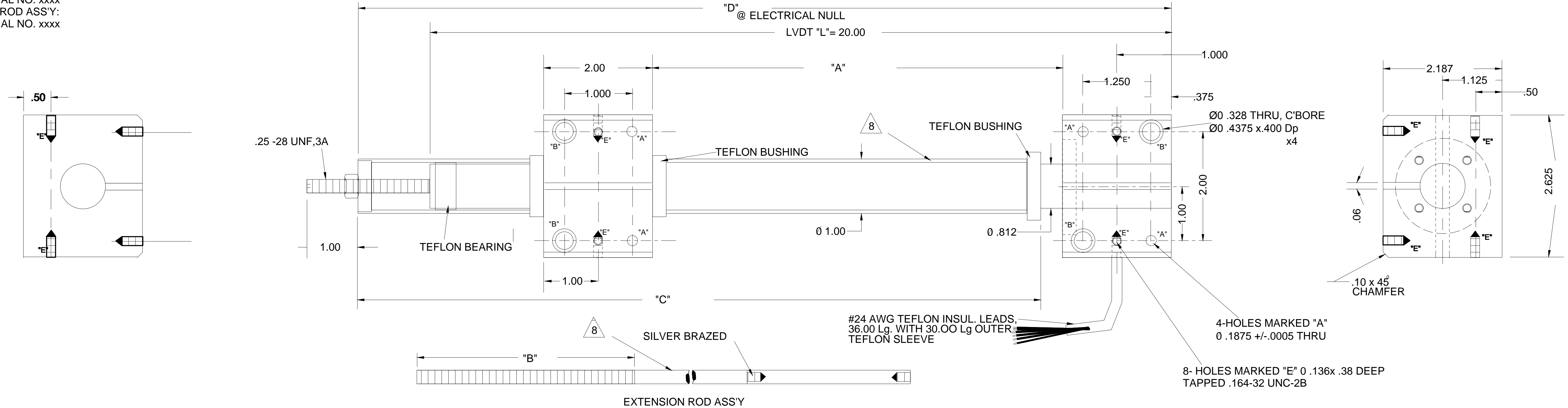


NOTES:

- EXCITATION: 5.75 VOLTS (rms), 1000 HERTZ (sinusoidal)
- SENSITIVITY: 0.132 VOLTS/ INCH / VOLT +/- 5%, INTO 20 K OHM LOAD
- LINEARITY: +/- 0.5% OF FULL RANGE
- PHASING: WITH CORE DISPLACED FROM NULL TOWARD THE LEAD END, THE OUTPUT VOLTAGE (BLK & GRN) SHALL INCREASE AND THE OUTPUT VOLTAGE (RED & BLU) SHALL DECREASE
- TEMPERATURE RANGE: 0 F TO 300 DEG F
- TEMPERATURE EFFECT: FOR ANY GIVEN DISPLACEMENT OF THE CORE FROM NULL, THE OUTPUT SHALL NOT VARY MORE THAN 1.25% / 100 DEG F, WITH THE EXCITATION VOLTAGE CONSTANT
- HI-POT TEST: WITH 1500 VOLT (rms) APPLIED BETWEEN ALL LEADS TIED TOGETHER AND THE HOUSING, FOR 1 MIN. THERE SHALL BE NO EVIDENCE OF BREAKDOWN
- MATERIAL:  
MOUNTING BLOCKS: ALUM. ALLOY  
INNER & OUTER SLEEVE: #304 ST. STEEL, MIN. WALL .062"
- IDENTIFICATION ELECTRO- ETCHED:  
LVDT BODY:  
LINEAR TRANSFORMER  
WESTINGHOUSE NO. 738J204-xxx  
MACRO SENSORS MODEL NO. PRW 1000 5000-xxxx  
SERIAL NO. xxxx  
CORE ROD ASS'Y:  
SERIAL NO. xxxx

# REVISIONS

| REV. | DESCRIPTION:                         | DATE:   | APPR.  |
|------|--------------------------------------|---------|--------|
| A    | ECR/ECN #517 ADDED PRW 1000 5000-008 | 6/7/02  | R.E.A. |
| A1   | REDRAWN WITH NO CHANGES              | 4/27/20 | L.H    |



| WESTINGHOUSE PART NO.<br>738J204 | MACRO SENSORS     |              | RESISTANCE +/-15% |           | DIMENSIONS |      |       |       | LINEAR RANGE INCHES |
|----------------------------------|-------------------|--------------|-------------------|-----------|------------|------|-------|-------|---------------------|
|                                  | MODEL NO.         | PART NO.     | PRI.              | EACH SEC. | "A"        | "B"  | "C"   | "D"   |                     |
| 001                              | PRW 1000 5000-001 | 015390000001 | 188 OHMS          | 557 OHMS  | 9.88       | 5.00 | 19.25 | 27.00 | +/- 5.00            |
| 002                              | PRW 1000 5000-002 | 015390000002 | 188 OHMS          | 557 OHMS  | 12.88      | 4.00 | 21.25 | 29.00 | +/- 5.00            |
| 003                              | PRW 1000 5000-003 | 015390000003 | 188 OHMS          | 557 OHMS  | 14.88      | 4.00 | 22.25 | 31.00 | +/- 6.00            |
| 004                              | PRW 1000 5000-004 | 015390000004 | 188 OHMS          | 557 OHMS  | 11.25      | 4.00 | 36.50 | 44.00 | +/- 5.00            |
| 005                              | PRW 1000 5000-005 | 015390000005 | 188 OHMS          | 557 OHMS  | 6.50       | 4.00 | 18.50 | 26.00 | +/- 5.00            |
| 006                              | PRW 1000 5000-006 | 015390000006 | 188 OHMS          | 557 OHMS  | 11.25      | 4.00 | 35.50 | 43.00 | +/- 5.00            |
| 007                              | PRW 1000 5000-007 | 015390000007 | 188 OHMS          | 557 OHMS  | 9.88       | 5.00 | 17.25 | 25.00 | +/- 4.00            |
| 008                              | PRW 1000 5000-008 | 015390000010 | 188 OHMS          | 557 OHMS  | 9.88       | 4.00 | 23.25 | 30.00 | +/- 4.00            |

UNLESS OTHERWISE SPECIFIED ALL DIMENSIONS IN INCHES.  
**TOLERANCES:**  
**ANGLES: +/- 0.5 DEGR.**  
**FRACTIONS: +/- 1/64**  
**DECIMAL: .XX = +/- .01 INCH**  
**.XXX= +/- .005 INCH**

|                      |                    |
|----------------------|--------------------|
| DRAFTSMAN:<br>R.E.A. | DATE:<br>22 APR 97 |
| CHECKER:             | DATE:              |
| APPROVED:            | DATE:              |
| APPROVED:            | DATE:              |
| APPROVED:            | DATE:              |

**AST MACRO SENSORS™**  
Your sensor business partner...

TITLE: **PRW 1000 5000 OUTLINE**

|             |                   |                             |
|-------------|-------------------|-----------------------------|
| FINISH: 63  | CAGE No.<br>06WW0 | DRAWING NO.<br>015990000000 |
| SCALE: NONE | SHEET 1 OF 1      |                             |

**MATERIAL:**