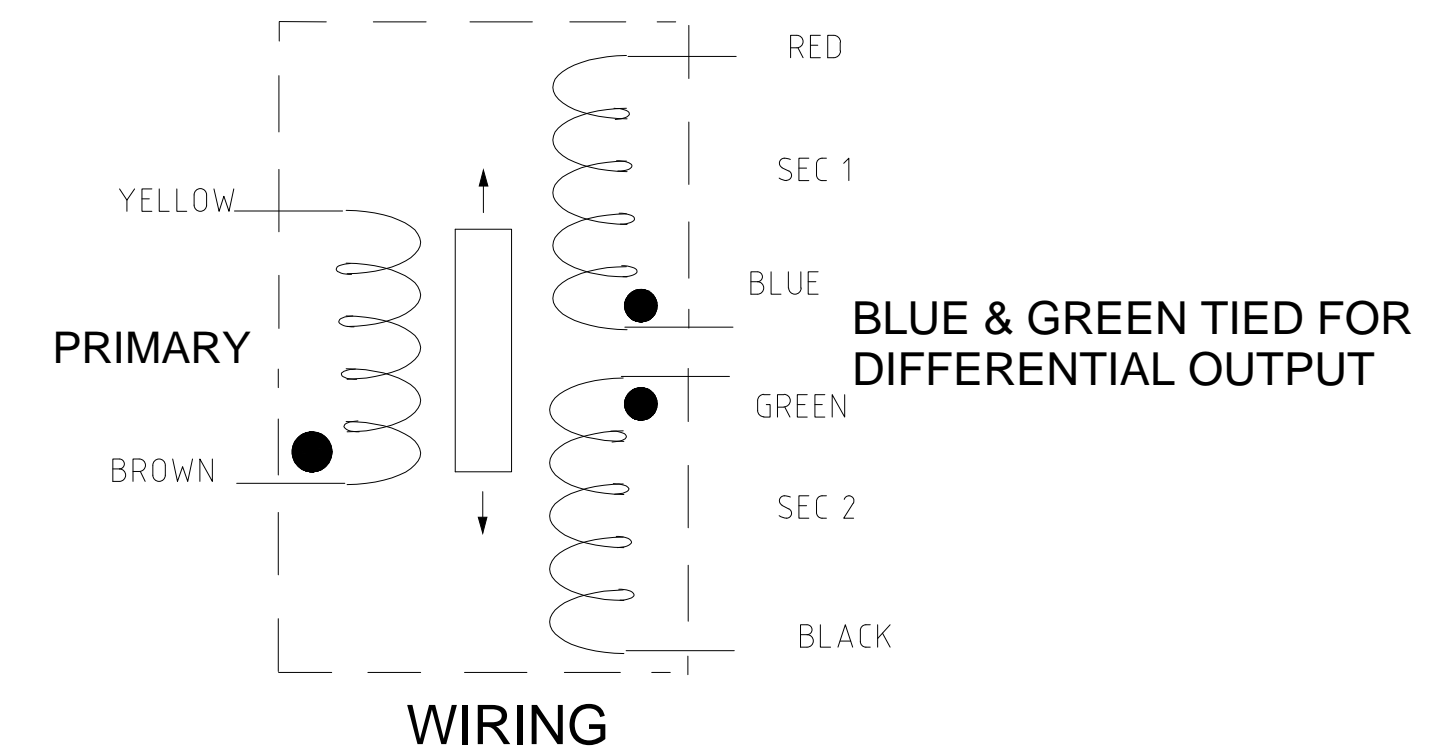
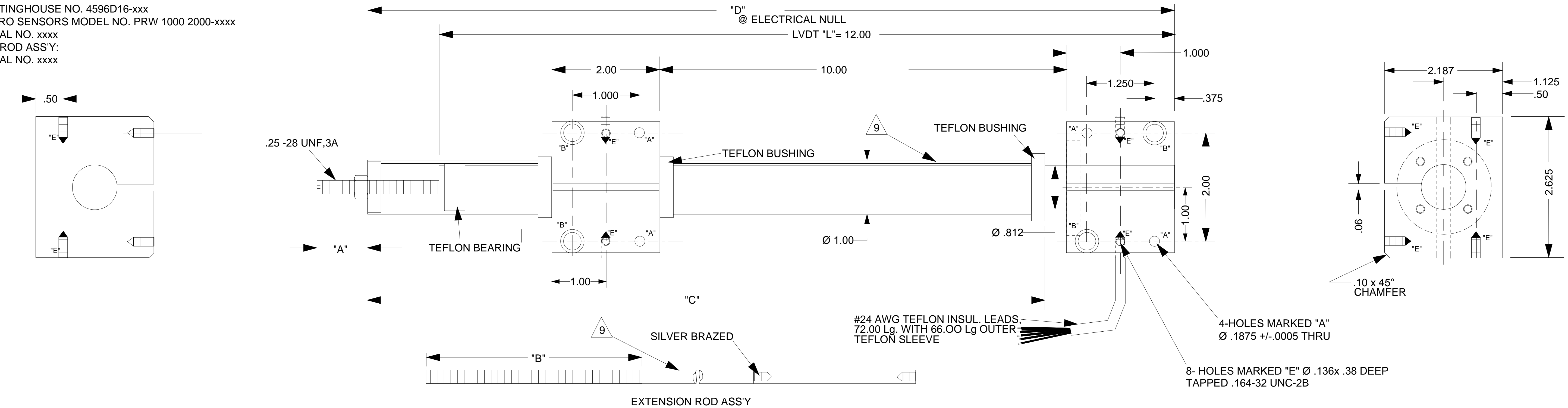


REVISIONS

REV.	DESCRIPTION:	DATE:	APPR.
A	REDRAWN WITH NO CHANGES	05/14/20	

NOTES:

- EXCITATION: 5.75 VOLTS (rms), 1000 HERTZ (sinusoidal).
- SENSITIVITY: 0.33 VOLTS/ INCH / VOLT +/- 5%, INTO 20 K OHM LOAD.
- LINEARITY: +/- 0.5% OF FULL RANGE.
- PHASING: WITH CORE DISPLACED FROM NULL TOWARD THE LEAD END, THE OUTPUT VOLTAGE (BLK & GRN) SHALL INCREASE AND THE OUTPUT VOLTAGE (RED & BLU) SHALL DECREASE.
- TEMPERATURE RANGE: 0° F TO 300° F.
- TEMPERATURE EFFECT: FOR ANY GIVEN DISPLACEMENT OF THE CORE FROM NULL, THE OUTPUT SHALL NOT VARY MORE THAN 1.25% / 100° F, WITH THE EXCITATION VOLTAGE CONSTANT.
- HI-POT TEST: WITH 1500 VOLT (rms) APPLIED BETWEEN ALL LEADS TIED TOGETHER AND THE HOUSING, FOR 1 MIN. THERE SHALL BE NO EVIDENCE OF BREAKDOWN.
- MATERIAL:
MOUNTING BLOCKS: ALUM. ALLOY.
INNER & OUTER SLEEVE: #304 ST. STEEL, MIN. WALL .062".
- IDENTIFICATION ELECTRO- ETCHED:
LVDT BODY:
LINEAR TRANSFORMER:
WESTINGHOUSE NO. 4596D16-xxx
MACRO SENSORS MODEL NO. PRW 1000 2000-xxxx
SERIAL NO. xxxx
CORE ROD ASS'Y:
SERIAL NO. xxxx



WESTINGHOUSE PART NO. 4596D16	MACRO SENSORS		RESISTANCE +/-15%		DIMENSIONS				LINEAR RANGE INCHES
	MODEL NO.	PART NO.	PRI.	EACH SEC.	"A"	"B"	"C"	"D"	
G01	PRW 1000 2000-001	015391000001	69 OHMS	89 OHMS	6.00	10.00	35.50	39.60	+/- 2.00
G02	PRW 1000 2000-002	015391000002	69 OHMS	89 OHMS	2.50	17.50	46.50	50.60	+/- 2.00
G03	PRW 1000 2000-003	015391000003	69 OHMS	89 OHMS	2.60	13.00	41.90	46.00	+/- 2.00
G04	PRW 1000 2000-004	015391000004	69 OHMS	89 OHMS	8.00	10.00	35.50	39.60	+/- 2.00

UNLESS OTHERWISE SPECIFIED ALL DIMENSIONS IN INCHES.
TOLERANCES:
ANGLES: +/- 0.5 DEGR.
FRACTIONS: +/- 1/64
DECIMAL: .XX = +/- .01 INCH
.XXX= +/- .005 INCH

DRAFTSMAN: R.E.A.	DATE: 29 JUN 98
CHECKER:	DATE:
APPROVED:	DATE:
APPROVED:	DATE:
APPROVED:	DATE:



TITLE PRW 1000 2000 OUTLINE	
B	C.A.G.E. No. 06WW0
DRAWING NO. 015991000000	
SCALE: NONE	SHEET 1 OF 1

FINISH: 63

MATERIAL: