

P	LTR	DESCRIPTION	DATE	DWN	APVD
A		ECN-23-239844	16NOV2023	SS	RB

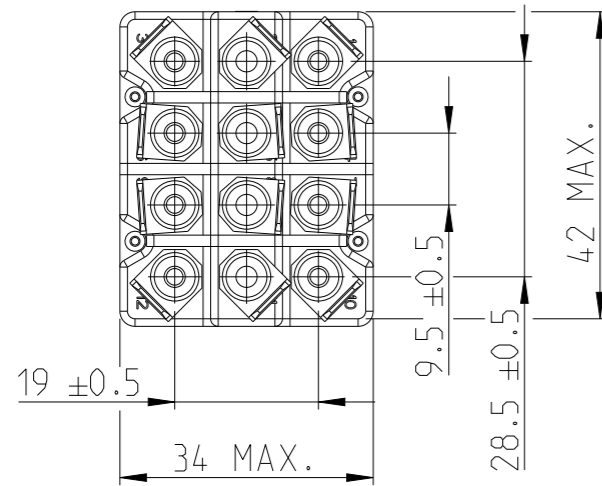
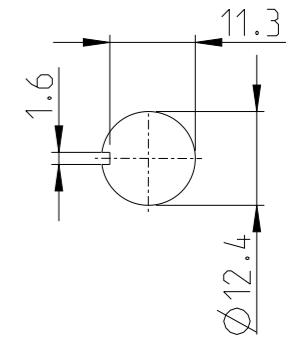
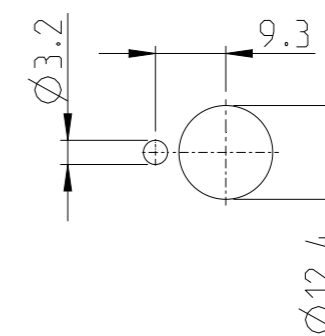
NOTES  
Bemerkungen

- 1 TE-CONNECTIVITY ORDER-NUMBER  
TE-Connectivity Bestellnummer

MOUNTING DETAIL:  
Montagebohrung

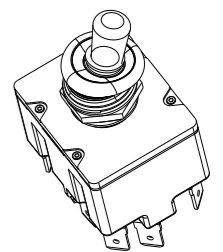
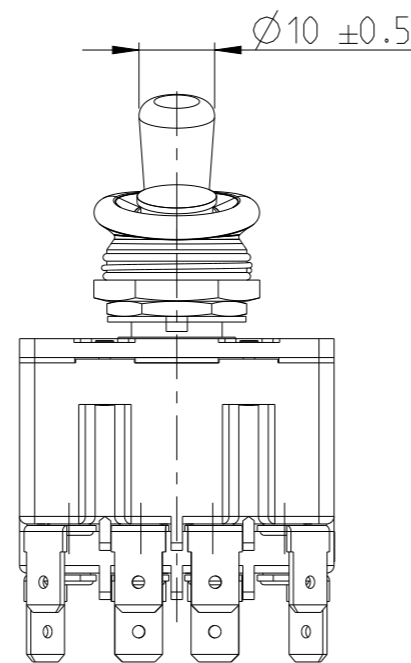
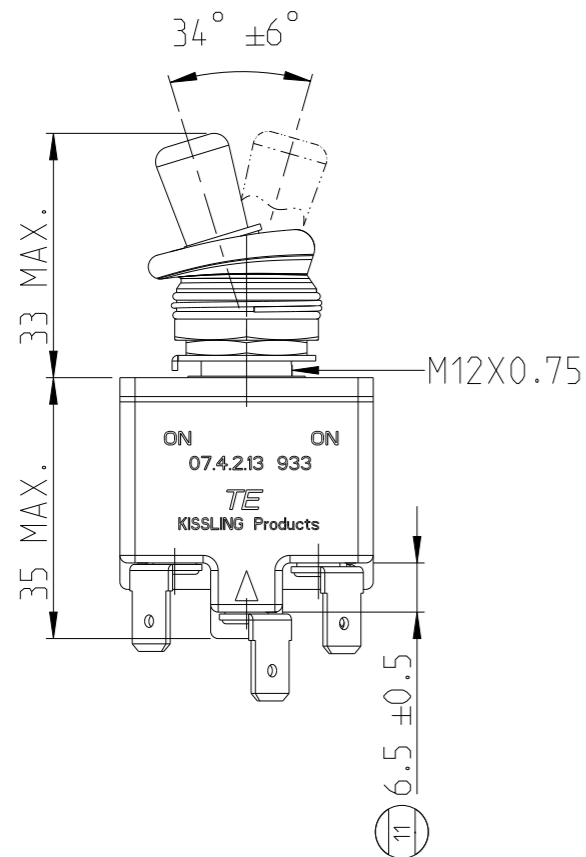
WITH LOCKING RING  
mit Nasenscheibe

WITHOUT LOCKING RING  
ohne Nasenscheibe



KEYWAY  
Nutseite

OPPOSITE KEYWAY  
Nutmegenseite



ISO 1:2

K1042044	1	A	TOGGLE SWITCH Kippschalter	101	1
TE ORDER-NO.	REV.	DESCRIPTION	WEIGHT [g]	ITEM NO.	

PARTS LIST

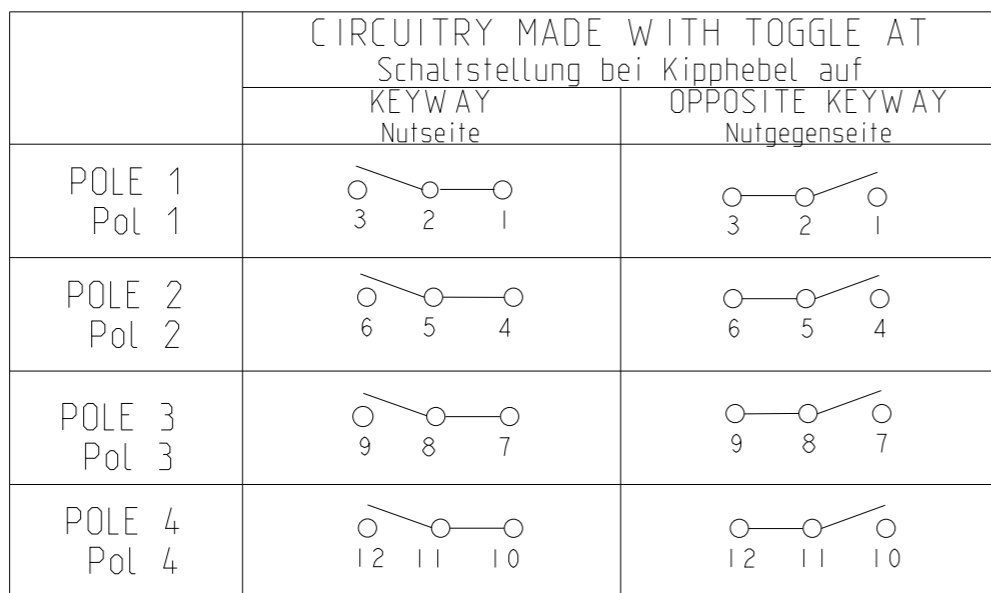
THIS DRAWING IS A CONTROLLED DOCUMENT.

DIMENSIONS:	TOLERANCES UNLESS OTHERWISE SPECIFIED:
mm	DIN ISO 2768 cL
	0 PLC ±
	1 PLC ±
	2 PLC ±
	3 PLC ±
	4 PLC ±
	ANGLES ±
MATERIAL	FINISH

DWN	K.Braun	28JUL2004
CHK	N.Mielke	20SEP2019
APVD	R.Stockinger	23SEP2019
PRODUCT SPEC		
APPLICATION SPEC		
WEIGHT		
CUSTOMER DRAWING		

		TE Connectivity	
		NAME TOGGLE SWITCH Kippschalter	
SIZE	CAGE CODE	DRAWING NO	RESTRICTED TO
A3	00779	07-4-2-13_933	-
SCALE		SHEET	REV
1:1		1 OF 2	A

### CIRCUIT DIAGRAM Schaltbild



ACTUATION  
Betaetigungsart

LOCKING KEYWAY SIDE  
rastend auf der Nutseite

LOCKING OPPOSITE KEYWAY SIDE  
rastend auf der Nutzgegensseite

REVISIONS					
P	LTR	DESCRIPTION	DATE	DWN	APVD
-	-	SEE SHEET 1	-	-	-

#### CONSTRUCTION

HOUSING MATERIAL.....THERMOPLAST GF  
 COVER MATERIAL.....GD-ZnAl4Cu1  
 CONNECTIONS.....FASTON DIN 46 244-A6,3-0,8  
 PROTECTION INTERIOR.....IP 6K5 DIN 40 050 PART 9  
 CONNECTIONS.....IP 00 DIN 40 050 PART 9

#### MECHANICAL DATA

CURRENT CARRYING PARTS.....CuZn-ALLOY  
 CONTACT MATERIAL.....Ag  
 AMBIENT TEMPERATURE RANGE.....-35°C TO +60°C  
 STORAGE TEMPREATURE RANGE.....-35°C TO +80°C  
 LIFE CYCLE (AT NOMINAL LOAD).....100,000 CYCLES

#### ELECTRICAL DATA

VOLTAGE 12 VDC OHMIC LOAD..... 20A  
 28 VDC OHMIC LOAD..... 20A  
 28 VDC INDUCTIVE LOAD.....AT L/R = 5ms 12A  
 28 VDC LAMP LOAD.....6A  
 115 VAC OHMIC LOAD.....15A  
 115 VAC INDUCTIVE LOAD..... COS.φ=0.75, 15A  
 115 VAC LAMP LOAD..... 4A  
 MOTOR LOAD..... UTILISATION CATEGORY AC3  
 (SEE DIN VDE 0660 TEL 107) 5A

MIN RATING.....12VDC, 20mA

IT IS RECOMMENDED TO USE GOLD-PLATED CONTACTS  
FOR LOWER CURRENTS OR VOLTAGES

#### Aufbau

Gehäusewerkstoff.....Thermoplast GF  
 Deckelwerkstoff.....GD-ZnAl4Cu  
 Anschluß.....Flachstecker DIN 46 244-A6,3-0,8  
 Schutzart Innenraum.....IP 6K5 DIN 40 050 Blatt 9  
 Anschlüsse.....IP 00 DIN 40 050 Blatt 9

#### Mechanische Daten

Stromführende Teile.....CuZn-Legierungen  
 Kontaktwerkstoff.....Ag  
 Umgebungstemperatur.....-35°C bis +60°C  
 Lagertemperatur.....-35°C bis +80°C  
 elektr. Lebensdauer (bei Nennlast).....100.000 Schaltspiele

#### Elektrische Daten

Nennspannung 12 VDC ohmsche Last..... 20A  
 28 VDC ohmsche Las..... 20A  
 28 VDC induktive Last.....bei L/R - 5ms 12A  
 28 VDC Lampenlast.....6A  
 115 VAC ohmsche Last.....15A  
 115 VAC induktive Last..... COS.φ=0.75, 15A  
 115 VAC Lampenlast.....4A  
 Motorlast..... Gebrauchskategorie AC3 (siehe DIN VDE 0660 Tel 107) 5A

Schaltleistung min.....12 VDC, 20mA

Für kleinere Spannungen bzw. Ströme empfehlen wir  
Kippschalter mit vergoldeten Kontakten

THIS DRAWING IS A CONTROLLED DOCUMENT.		DWN K.Braun 28JUL2004	<b>TE Connectivity</b>			
DIMENSIONS: mm		CHK N.Mielke 20SEP2019				
TOLERANCES UNLESS OTHERWISE SPECIFIED: DIN ISO 2768 cL		APVD R.Stockinger 23SEP2019	NAME TOGGLE SWITCH Kippschalter			
0 PLC ± 1 PLC ± 2 PLC ± 3 PLC ± 4 PLC ± ANGLES ±		PRODUCT SPEC	RESTRICTED TO			
MATERIAL		FINISH	APPLICATION SPEC	SIZE A3	CAGE CODE 00779	DRAWING NO C=07-4-2-13_933
		WEIGHT	SCALE 1:1 SHEET 2 OF 2 REV A			
		CUSTOMER DRAWING				