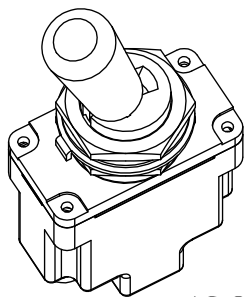
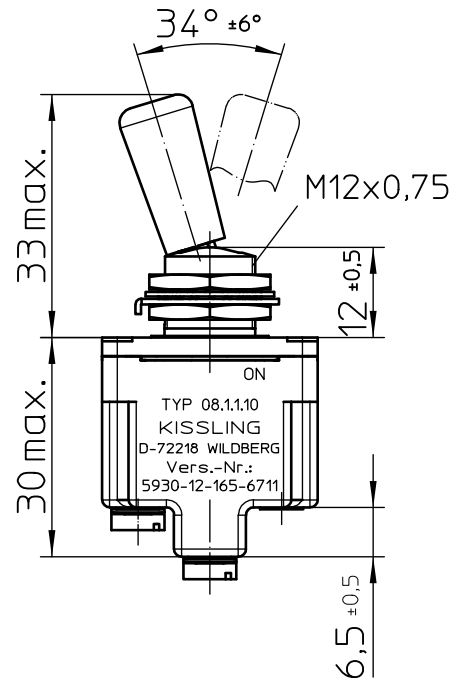
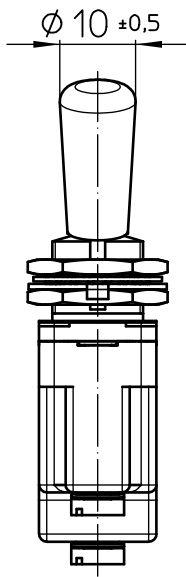
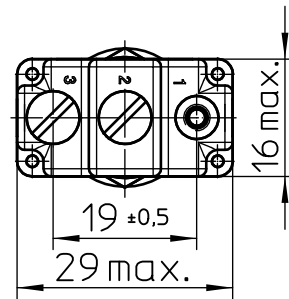


keyway

opposite keyway



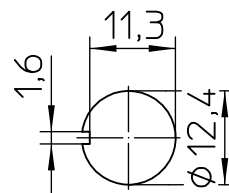
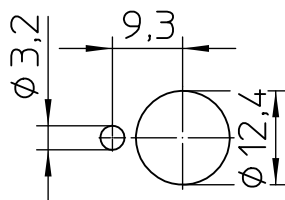
ISO



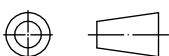
## Mounting Detail

with locking ring

without locking ring

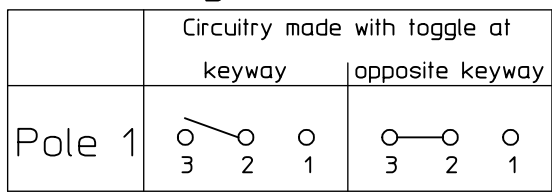


Third Angle Projection



	Date	Name	mm	Scale	 Elektrotechnik - GmbH & Co KG D - 72218 Wildberg	Drawing No:
Drawn	15.10.1997	Kulli		1:1		08-1-1-10
Check	03.11.2005	Braun	General Tolerances DIN ISO 2768 mK		NSN:	5930-12-165-6711

## Circuit Diagram



## Actuation

locking keyway side  
locking opposite keyway side

## Construction

Material, Casing ..... Duroplast GF  
 Material, Cover ..... GD-ZnAl4Cu1  
 Connections ..... Screws M3,5x6 ISO 1580  
 Protection Interior ..... IP 6K7 DIN 40 050 Part 9  
     Connections ..... IP 00 DIN 40 050 Part 9

## Mechanical Data

Current carrying parts ..... CuZn-Alloy  
 Contacts ..... Ag  
 Ambient Temperature Range ..... -55°C to +85°C  
 Storage Temperature Range ..... -65°C to +85°C  
 Life Cycle iaw VG 95 210 Part 21, grade H ..... 100.000 operations

## Electrical Data

Voltage 28 V DC ohmic Load ..... 20A  
 28 V DC inductive Load ..... at L/R = 5 ms 15A  
 28 V DC lamp Load ..... 5A  
 115 V AC ohmic Load ..... 15A  
 115 V AC inductive Load ..... cos.  $\Phi$  = 0,75, 10A  
 115 V AC lamp Load ..... 3A  
 Motor Load ..... utilisation category AC3 (see DIN VDE 0660 Part 107) 5A

Min. Rating ..... 12 V DC, 20 mA

It is recommended to use gold-plated contacts  
for lower currents or voltages.

	Date	Name	mm ←→	Scale 1:1		Drawing No: <b>08-1-1-10</b>
Drawn	17.10.1997	Kulli	General Tolerances DIN ISO 2768 mK			NSN.: 5930-12-165-6711
Check	03.02.2003	Braun				